

Off-Campus Options Meeting for Second Year LA Students

April 2024

Agenda

- 1. Advising Process for the Third Year**
Mitzi Farmer, Director of Academic Services
- 2. APDesign Italian Studies Program**
Jessica Canfield, APD Director of International Programs
- 3. Education Abroad**
Amanda Mack, K-State Education Abroad Advisor
- 4. Kansas City Design Center (KCDC)**
Michael Gibson, Associate Professor
Kylie McConnell, Program Coordinator
- 5. Internship**
Huston Gibson, Professor & Department Head
Virginia Bruner, LARCP Program Coordinator
- 6. Q&A**

Landscape Architecture Required Off-Campus Options

Our students' design and planning studies are enriched by frequent interaction with the world outside Seaton/Regnier Hall. Many participate in an education abroad experience or complete an internship. Other students choose to study urban issues at the Kansas City Design Center. **All non-baccalaureate Landscape Architecture students** are required to have an off-campus experience, which should occur during the spring semester of their 4th year (eighth semester) Options include:

- **APDesign Italian Studies Program; Education Abroad; KCDC (Kansas City Design Center); or, Internship**

Please refer to your curriculum guide and academic advisor as you consider your plans. More information can be found on the APDesign website, under 'Student Success' > Education Abroad & Off Campus Experiences: <https://apdesign.k-state.edu/current-students/off-campus-study/index.html>

Advising Process

Landscape Architecture Required Off-Campus Options

2025 - 2026

Landscape Architecture Students

Semester	APD Italian Studies Program	K-State in Italy Summer <small>*not studio based</small>	Education Abroad	KCDC	INTERNSHIP	Important Notes for LA Students
Summer After SIXTH SEMESTER		X			X	All non-baccalaureate LA students are required to complete an internship, which can occur during the spring of 4th year or summer after 3rd or 4th year. If students complete an internship in the spring and choose to extend employment into the summer, they only need to complete an internship application for spring.
EIGHTH SEMESTER. (4 th yr. Spring)	X		X	X	X	
Summer After EIGHTH SEMESTER		X			X	

Education Abroad



THE COLLEGE of
ARCHITECTURE, PLANNING & DESIGN // K-STATE

Why Education Abroad?

- **Academic challenge**—experience a range of topics, assignment types, and instruction styles as you engage in various coursework.
- **Professional growth**—visit notable locations and experience historic and modern design and planning precedents. An education abroad experience can be a desirable credential to future employers.
- **Personal enrichment**—develop independence, a greater sense of self, and increased awareness and appreciation for other cultures.
- **Global perspective**—broaden awareness and multicultural competency by living in another country.
- Have a once-in-a-lifetime experience as a University student.

Potential Challenges When Studying Abroad

- **The language of instruction may not be English**, but full proficiency of the local language is not necessary
- **The academic calendar**, including exact semester start and end dates, may differ from K-State.
- **Minimal interaction with professors** outside of class. University culture may be hierarchical and more formal than at K-State.
- **Homesickness** and **culture shock**

Note: K-State and APDesign have excellent relationships with our partner institutions, but we do not influence their policies or procedures. If you elect to study at a foreign university, you must be prepared to accept and manage potential challenges.

2025-2026 Education Abroad Options for APD Students

Program	City, Country	Program Type	Min. GPA	Enrollment Capacity	ARCH	IARC	INDD	LA	RCP	RECD
APD Italian Studies Program-Orvieto SPRING	Orvieto, Italy	K-State	2.5*	~40	x	x		x	x	x
APD Italian Studies Program-Orvieto FALL	Orvieto, Italy	K-State	2.5*	~30	x		x			
K-State in Italy-Orvieto SUMMER <small>(studio courses not offered in summer program)</small>	Orvieto, Italy	K-State	2.5	N/A	x	x	x	x	x	x
Other Education Abroad Programs										
BOKU Univ. of Natural Resources and Life Sciences	Vienna, Austria	Exchange	3.0	2				Spring		
Coburg University of Applied Sciences	Coburg, Germany	Exchange	3.0	3		Spring				
Czech Technical University	Prague, Czech Republic	Exchange	3.0	6	Spring	Spring				
Danish Institute for Study Abroad (DIS)	Copenhagen, Denmark	Direct Enroll	3.0	5	Spring	Spring or Summer	Fall or Summer	Spring	Spring	
University of New South Wales	Sydney, Australia	Exchange	3.0	1					Spring	
SAI ELISAVA (Barcelona)	Barcelona, Spain	Direct Enroll	3.0	2			Fall			
University of Sheffield	Sheffield, England	Direct Enroll	3.0	TBD					Spring	
Trier University of Applied Sciences	Trier, Germany	Exchange	3.0	TBD		Spring				
University of Western Australia	Perth, Australia	Exchange	3.0	1	Spring			Spring		
Alternative Education Abroad	Note: Alternative Education Abroad Programs are available by petition only. This option requires extensive advance preparation and submission of a petition for endorsement by your Department, the APD International Studies Committee (ISC), and K-State Office of International Programs (OIP). Endorsement does NOT guarantee admission by the partner institution.									

*If the program is at capacity, the minimum GPA may be raised.

Notes:

- Program availability and enrollment capacity are subject to change.
- ALL Education Abroad programs require an Off-Campus Study Application and students must receive endorsement from the APDesign International Studies Committee.
- Program Type and tuition: K-State = tuition paid to K-State, Exchange = tuition paid to K-State, Direct Enroll = tuition paid to that institution

APDesign Italian Studies Program

Orvieto, Italy

<https://www.youtube.com/watch?v=cYmFC3WQndE>



THE COLLEGE of
ARCHITECTURE, PLANNING & DESIGN // K-STATE

APDesign Italian Studies Program

Orvieto, Italy

[Link to Program Information from APDesign](#)

[Link to Program information from K-State OIP](#)



Spring program option for LA Students

- Min. GPA 2.50*
- Enrollment Capacity:
 - Approx. 40 students for Spring for all disciplines
 - Approx. 30 students for Fall for all disciplines
- Language of instruction is English
- Studio and seminar classes taught by K-State and Italian professors
- Studio and seminar typically meet two days per week
- Projects focus on issues/concerns pertaining to the local community
- Program includes multiple field trips and cultural workshops
- Students live in furnished apartments shared with fellow KSU students
- **Need to be motivated and flexible**

***If the program is at capacity, minimum GPA may be raised.**



THE COLLEGE of
ARCHITECTURE, PLANNING & DESIGN // K-STATE

APDesign Italian Studies Program

Orvieto, Italy



- Orvieto is located about one hour north of Rome in the Umbria region of Italy.
- It has a rich history, from its Etruscan underground to its Romanesque cathedrals.
- It offers important archaeological, architectural, and urban sites to visit and appreciate.
- Orvieto is a friendly, calm, and welcoming atmosphere.
- The city is considered a living classroom where students are immersed in a culturally stimulating environment surrounded by piazzas, palaces, churches, and cobble lanes.

APDesign Italian Studies Program

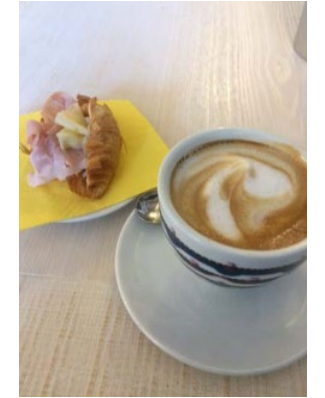
Orvieto, Italy



- Students live in fully furnished apartments located in the historic part of the city.
- Apartments are arranged by an Italian agency and accommodate two to six students.
- Students shop for food and cook meals. They are introduced to the local market and take a cooking class with a local chef.

APDesign Italian Studies Program

Orvieto, Italy



APDesign Italian Studies Program

Orvieto, Italy



- The program includes multiple one-day field trips (typically to Rome, Siena, Florence, Assisi, Villa Lante) and several extended, two to six-day field trips (typically to Venezia, Vicenza, and Verona in the north and to Pompeii, Sorrento, and the Amalfi Coast in the south)
- Field trips are led by K-State faculty, the Italian professors, and/or professional guides.
- The field trips provide students with opportunities to experience many aspects of Italian culture, art, urban planning, landscape architecture, architecture, interior architecture, and industrial design.

APDesign Italian Studies Program

Orvieto, Italy



- The program includes multiple cultural workshops as part of the curriculum.
- Topics may include:
 - Leather
 - Svinnere
 - Honey
 - Cheese
 - Mosaic Olive Oil & Basketry
 - Craft Beer
 - Photography
 - Ceramic

K-State in Italy (Summer Program)

Orvieto, Italy

[Link to Program Information](#)



<https://ksu.studioabroad.com/index.cfm?FuseAction=Programs.ViewProgramAngular&id=12957>

Summer program option for all K-State Students

Note: This program runs for 4-weeks during mid-May to mid-July; program offerings and dates vary each year

- Min. GPA 2.5
- Open to all K-State Students
- Program is 4-weeks, dates vary
- Language of Instruction in **English** by K-State Professors
- *Studio courses are **NOT** offered in this program
- Course offerings change each summer
- Organized travel opportunities to Rome and Florence
- **Need to be motivated and flexible**

K-State in Italy Orvieto, Italy



<https://ksu.studioabroad.com/index.cfm?FuseAction=Programs.ViewProgramAngular&id=12957>

**Summer program option
for all K-State Students**

Example of Summer 2024 Program. Program offerings vary each summer.

**Travel
is
Education**

The program is open to all K-State majors,
and no prior design or drawing experience
is required.

Summer 2024
K-State in Italy | APDesign Program

June 4 – July 6, 2024
June 4 (depart U.S.) and July 6 (depart Italy)

Courses:
Anatomy of Public Space | 4 – credits
Prof. Jessica Canfield, APDesign Director of International Program

Seeing Through Watercolor | 3 – credits
Prof. Otto Chanyakorn



Other Education Abroad Programs



University of Natural Resources and Life Sciences

Vienna, Austria

[Link to Program Information](#)



Unknown (n.d.). BOKU(photograph). Retrieved September 2020 from <https://boku.ac.at/en/>

Spring program option for LA students

Note: this program typ. runs mid-Feb. to late June

- Min. GPA 3.00
- Enrollment Capacity: max. of 2 LA students
- Languages of instruction are English and German
- Housing in student residences or shared flat with other students
- **Need to be flexible, independent, self-directed and have language proficiency**



THE COLLEGE of
ARCHITECTURE, PLANNING & DESIGN // K-STATE



Danish Institute for Study Abroad (DIS)

Copenhagen, Denmark

[Link to Program Information](#)



Unknown (n.d.). *Copenhagen* (photograph). Retrieved June 2017 from <http://www.ironman.com/triathlon/events/emea/ironman/copenhagen.aspx#axzz4kq2tn8hi>

Spring program option for LA Students

- Min. GPA 3.00
- Enrollment Capacity: max. of 5 students for all disciplines
- Studio professors are distinguished practicing Danish designers
- Studio meets three days a week
- Field trips are related to studio and well planned
- Offers highly organized orientation
- Very good support for international students
- Good assistance with housing
- Need to be inquisitive, motivated, and hard-working



THE COLLEGE of
ARCHITECTURE, PLANNING & DESIGN // K-STATE



University of Western Australia

Perth, Australia

[Link to Program Information](#)



Unknown (n.d.). *The University of Western Australia (Photograph)*. Retrieved June 2017 from <https://www.studyoptions.com/university-profiles/university-western-australia>

Spring program option for LA students

Note: this program typ. runs mid-Feb. to early June

- Min. GPA 3.00
- Enrollment Capacity: max. of 1 students for all disciplines
- Competitive placement in a World Top 100 university
- Has strong commitment to international exchange students and considerable support
- Need to be motivated and hardworking



THE COLLEGE of
ARCHITECTURE, PLANNING & DESIGN // K-STATE

Alternative Education Abroad Programs

(Available by petition only)

- Research potential programs
- Talk to your K-State Education Abroad Advisor, Amanda Mack, regarding program availability, use of financial aid, scholarships etc.
- Discuss your alternative education abroad plans with APDesign International Programs Director, Jessica Canfield
- This option requires extensive advance preparation and submission of a petition (including short essay responses) for endorsement by your Department, the APD International Studies Committee (ISC), and K-State Office of International Programs (OIP)
- Endorsement does NOT guarantee admission by the partner institution – application to the partner institution is a separate process
- See ‘Petitioning for an Alternative Education Abroad Program’ on APD website for guidelines <https://apdesign.k-state.edu/student-success/education-abroad/>

Education Abroad Scholarships

- K-State Office of International Program (OIP) Scholarships are available to all students participating in Education Abroad programs in Spring, Summer, and Fall
 - Questions, contact Amanda Mack mackah@ksu.edu
- APD Education Abroad Scholarships are available to all APD students participating in the Fall and Spring Italian Studies Program. Information will be available during Education Abroad Orientation meetings.
 - Questions, contact Courtney Markle markle@ksu.edu
- To be considered, complete the university scholarship application:
<https://www.k-state.edu/abroad/current-students/funding/scholarships.html>

[K-State home](#) » [OIP](#) » [Education Abroad](#) » [Current students](#) » [Funding Your Experience](#) » [Scholarships](#)

Education Abroad Questions

- For curriculum and/or academic plan questions meet with your APD Academic Advisor
- For Education Abroad questions meet with K-State OIP Education Abroad Advisor, Amanda Mack (mackah@ksu.edu)
- Talk to a member of the International Studies Committee:
 - Jessica Canfield, Director & LARCP Rep.
 - Byungsoo Kim, IAID Rep.
 - Otto Chanyakorn, ARCH Rep.
 - Adriana Molina, ARCH Rep.
 - Courtney Markle, Project Coordinator, SAS Office

KCDC

Kansas City Design Center



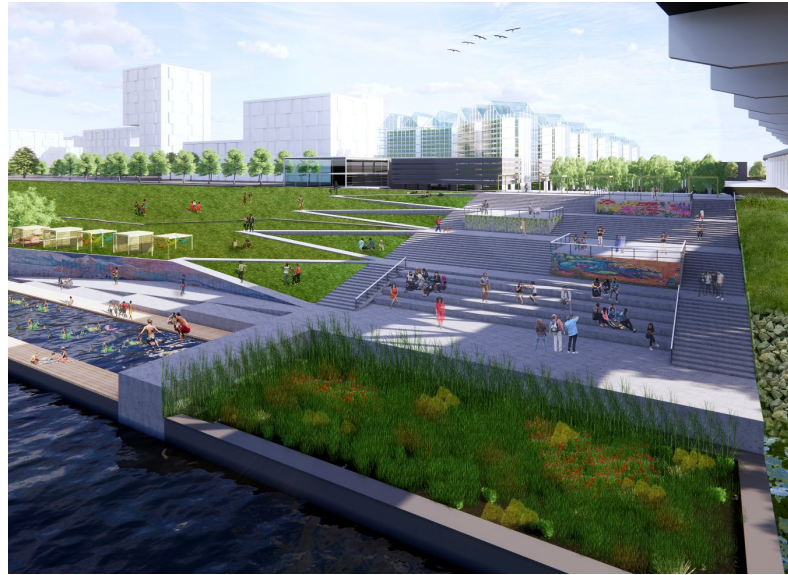
Why KCDC?

- Be part of a unique learning laboratory located in the downtown Kansas City that provides students the opportunity to **fully immerse themselves in on-site project studies**
- Actively explore **current urban design issues** facing Kansas City's future development
- Participate in an **interdisciplinary urban design** studio that forms partnerships with local client groups, community members and professional firms
- Develop **design visions and proposals** that address major architectural, urban design and urban planning issues throughout metropolitan Kansas City
- Participate in **critical dialogue** concerning architecture, planning and design issues with public agencies and local community organizations

KCDC

What we do:

Located in the heart of downtown Kansas City, the Kansas City Design Center (KCDC) is a nationally-recognized, service-learning urban design program that operates as a 501(c)3 nonprofit partnership among local civic leaders, professional designers, and Kansas State University.



KCDC

Who we are:

Each semester Kansas State University students participate in studio and seminar courses at KCDC to learn from K-State faculty, professionals, and community stakeholders.

The projects are interdisciplinary in focus and a variety of disciplines at APDesign are encouraged to participate.



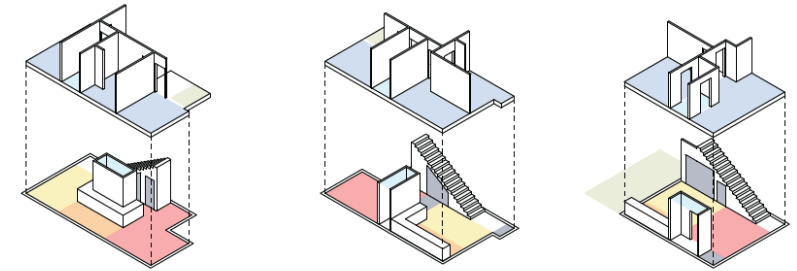
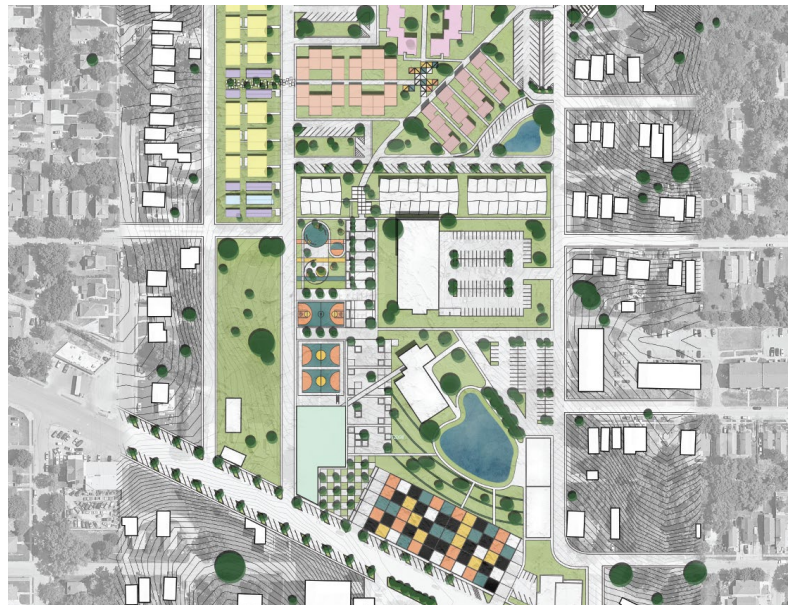
KCDC

AY23-24 project

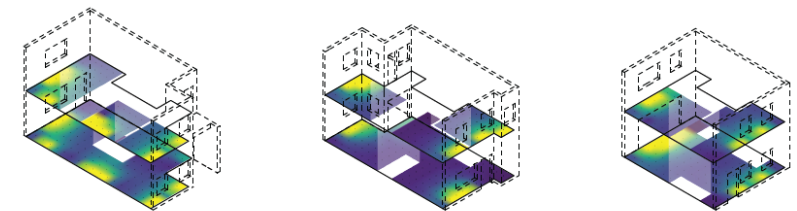
The current studio is collaborating with Wyandotte County/Kansas City Kansas to reimagine undeveloped land around Bethany Park in a masterplan focusing on net zero affordable housing and sustainable neighborhood design.

Students are proposing new housing types that address small homes, intergenerational housing, mix uses, and shared amenities.

The studio is also collaborating with KC Habitat for Humanity on an exhibit showcasing high performance prefab construction that will be displayed at CABA and KCK's Third Friday Arts Walk.



Program Diagram

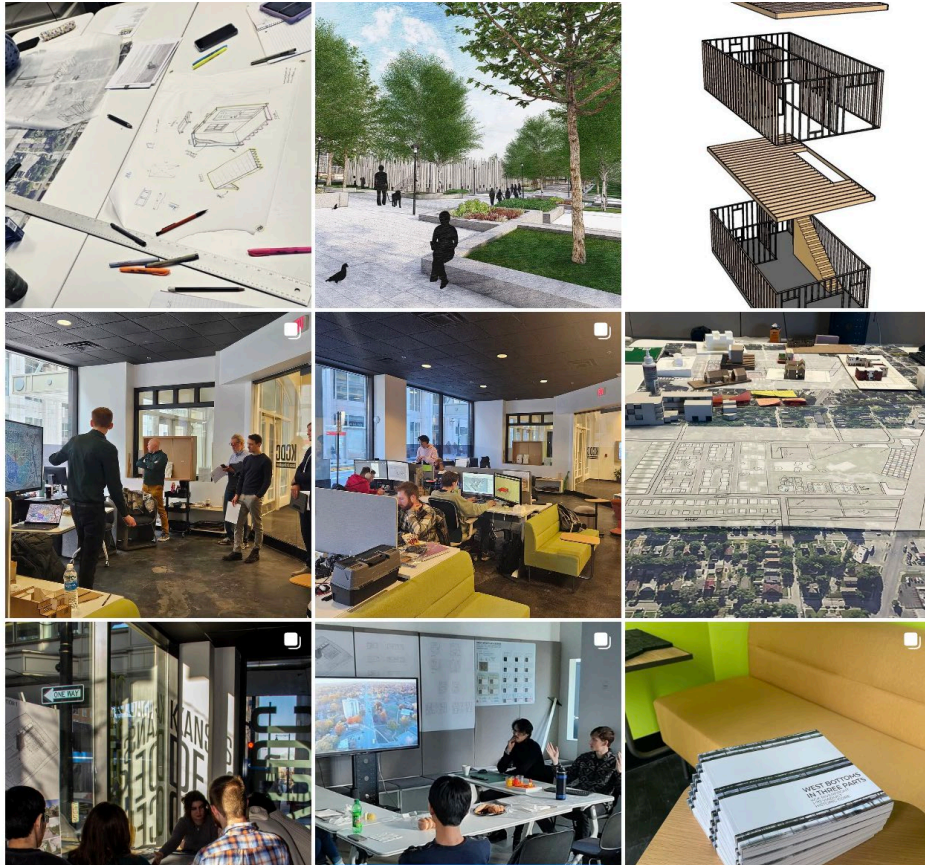


Daylight Factor

Learn more about KCDC:

Instagram @[kcdesigncenter](https://www.instagram.com/kcdesigncenter)

<http://www.kcdesigncenter.org/>



KCDC
Kansas City Design Center

[About](#) / [Projects](#) / [Events](#) / [News](#) / [Join](#) / [Store](#)



KCDC
Kansas City Design Center

APDESIGN

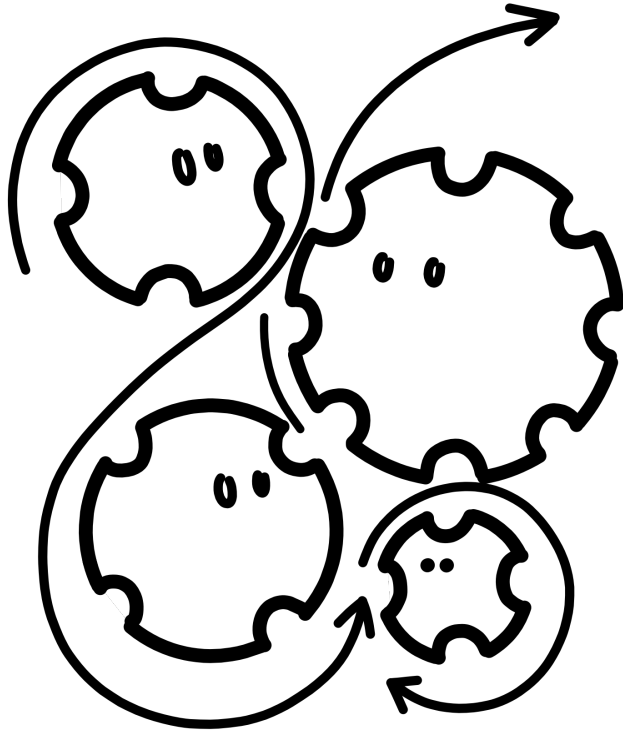
THE COLLEGE of
ARCHITECTURE, PLANNING & DESIGN // K-STATE

Internship



THE COLLEGE of
ARCHITECTURE, PLANNING & DESIGN // K-STATE

Internship



Prozess by Julian Kücklich is made available under the [Creative Commons CC0.1.0 Universal Public Domain Dedication](#).

All NB LA students are **required** to complete an internship. This will either be during the 8th semester OR, if you study abroad or do KCDC that semester, your internship should occur during the summer.

Internships vary with a wide range of professional options. All internships must be approved prior to starting in order to receive academic credit.

Required Form

Internship Agreement

between Internship Sponsor,
Department, and Student Intern

Purpose: The purpose of the LARCP internship program is to offer students the opportunity to broaden their educational experiences by participating in a professional work environment. The internship is an opportunity to apply the knowledge and skills gained in the university to a professional setting while also identifying the aspects of education that warrant further exploration in the final year of study.

Academic Expectations: Landscape Architecture (MLA) students in the non-baccalaureate track are required to seek and participate in a professional internship for academic credit. The experience may be:

- 8 to 10-week summer internship
- a semester-long 16-week internship
- an extended spring and summer internship

Regional and Community Planning (MRCP) students in the non-baccalaureate track are required to complete a semester-long off-campus experience for academic credit. The experience may be an internship or study abroad.

Real Estate and Community Development (BS RECD) students have an optional semester-long off-campus experience for academic credit. The experience may be an internship or study abroad.

In addition, students in our post-baccalaureate graduate programs (MLA, MRPC, & MSCD) may participate in internships for academic credit.

Responsibilities:

Internship Sponsor: Internship Sponsors (employers) will provide full time employment compensated at a fair and appropriate wage. The Sponsor will be diligent in assigning work responsibilities to the Intern that will broaden his/her knowledge base, challenge his/her capabilities, and permit him/her to participate fully as a contributing member of a project team. It is expected that the Student Intern will participate in planning, programming, and/or design discussions and decisions, attend presentations, meet clients/stakeholders, and be given every opportunity to contribute to the success of a project in accordance with his/her capabilities. It is of particular interest that the Intern understands the organization of the office, how project decisions are made, management/administration processes, and office research methods.

The Internship Sponsor is responsible for providing the Intern direction and work reviews on a regular basis by an assigned office mentor. Employers will provide oversight by a licensed, certified, or qualified individual in their profession. Upon completion of the internship, the Sponsor will be asked to write a brief summation of the intern's strengths and weaknesses. The information provided will be shared only with faculty and used to direct our educational efforts to improve our instruction.

Department: Credit hours will be assigned to the student for courses related to the internship experience as outlined in the curricula. The Intern has course responsibilities and assignments which will be submitted for faculty review during the internship and upon his/her return to the university. The work will be evaluated by the LARCP office and made available to the faculty. Grades will be given for the work products required of the student intern and will not reflect office performance.

Student Intern: Students are required to secure an internship meeting their academic and professional goals. Students must submit the internship request first to the Department Head and then upload this agreement form with sponsor and student signatures to Canvas site provided by the LARCP office prior to beginning employment.

The Intern is responsible for participating and executing, to the best of his/her abilities, work assigned by the Internship Sponsor. Interns will prepare the following academic products:

- Bi-monthly reports summarizing experience, reviewed by the Internship Supervisor
- Reflection paper at the end of the internship
- Poster presentation as specified by the LARCP office
- Oral and visual presentation as specified by the LARCP office

AGREEMENT

Student Intern, Signed

Date

Student Intern, Typed

Degree Program

Internship Sponsor/Supervisor, Signed

Date

Internship Sponsor/Supervisor, Typed

Huston Gibson, Ph.D.
Professor and Department Head
Landscape Architecture and Regional & Community Planning

Internship Sponsor Information:

Sponsor: _____
Address: _____
Phone: _____
Email: _____

Student Intern:

In the box below, please write a few sentences describing (to the best of your knowledge) what you will be doing during your internship.

Next Steps

- Review and consider the options presented today
 - You will be notified via email when the slides/documents are updated on the APD website
- Discuss the options and your preferences with your parents/family/friends
- In the Fall, meet with your academic advisor to determine your plan
- Attend the Fall meeting on “How to apply for Off-Campus Study”
 - You will receive an email with more information in late August/early September
- **Submit your Off-Campus Study Application, Due Friday, October 25**
 - You will receive instructions in late August/early September

Questions

- For Curriculum and/or Academic Planning
Catherine Caffera, Academic Advisor, caffera@ksu.edu
Mitzi Farmer, Director of Academic Services, mwfarmer@ksu.edu
- For APD Italian Studies Program
Jessica Canfield, APD Director of International Programs jesscan@ksu.edu
- For other Education Abroad Programs
Amanda Mack, Education Abroad Advisor for
K-State Office of International Programs mackah@ksu.edu
- For KCDC
Michael Gibson, Associate Professor, mdgibson@ksu.edu
Kylie McConnell, Program Coordinator kmccconnell@kcdesigncenter.org
- For Internship
Huston Gibson, Professor & Department Head hgibson@ksu.edu
Virginia Brunner-Livingston, Program Coordinator virgib@ksu.edu