



SENSORY EXPLORATION

THE GRAND OPENING OF MANHATTAN'S NEW RECREATION PARK

BRW- MEREDITH BRYAN, MONSERRAT RIOS, AURORA SHAVER



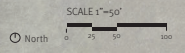
Sensory Exploration looks to the future of Manhattan, Kansas- proposing a new urban park that connects to the city’s downtown and trail system. This new recreation park is envisioned to be heavily used by both the community and visitors to the city.

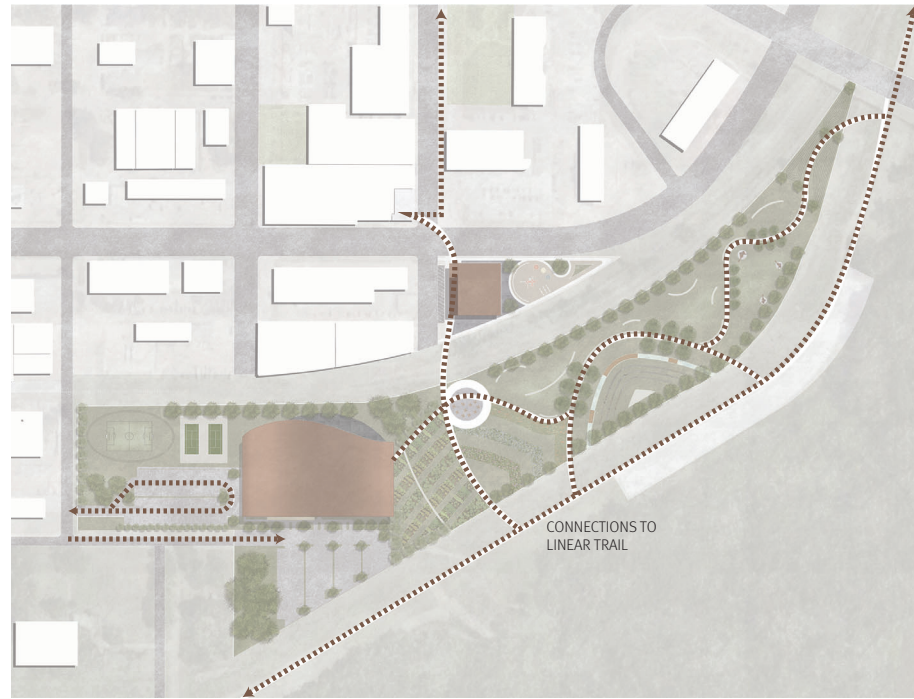
The primary focus of this design is making a well-connected and accessible place for the community to utilize. Through the addition of a grand pedestrian bridge, the recreation site is directly accessible from downtown Manhattan. The bridge starts downtown and penetrates through the proposed Art Museum, allowing users to either pass-by or linger in the museum. This encourages more use of the facility. The bridge then ends on the main park space into a landing plaza. From here the visitor may walk to the main Recreation Center of choose to experience the entirety of the site. Wandering paths draws one throughout the park and encourage exploration. The park’s main feature is its five sensory gardens. Each garden is

designed to target and stimulate one of the five senses. Designing space around our senses paints an unforgettable experience of that space. This physical response is what can truly define our idea and perception of the place. Our senses connect our body to our soul. They “provide data to our perception,” giving us an idea of the world around us. Sensory gardens can be experienced and enjoyed by everyone. They are especially great places for those with disabilities or special needs, as they are used in occupational therapy. Overall, Sensory Exploration is designed to facilitate meaningful and enjoyable experiences for all, while helping make Manhattan a more complete, connected city.



SITE PLAN

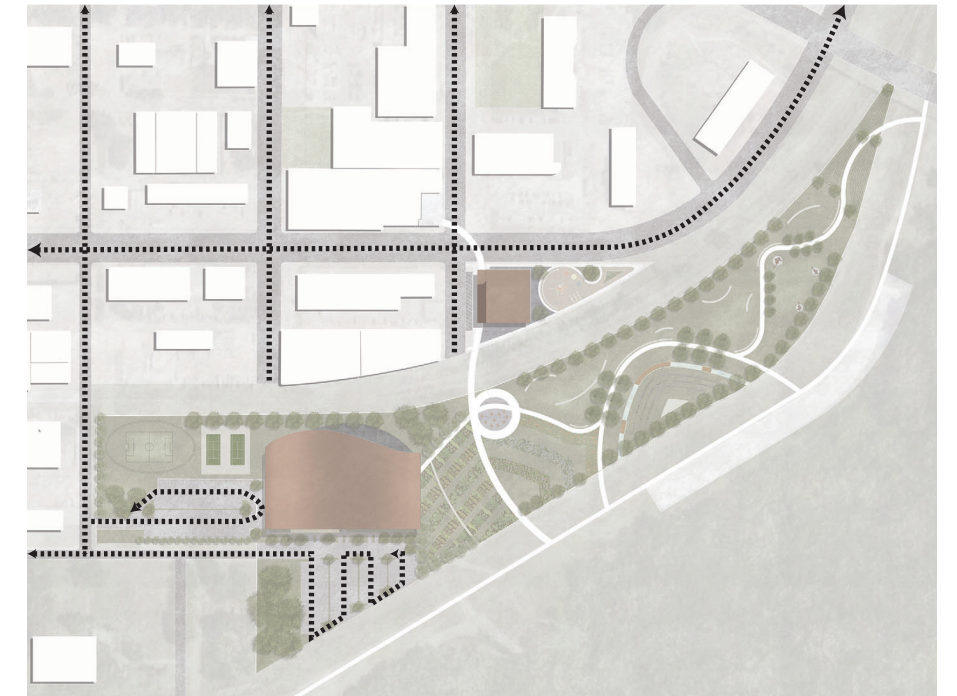




CONNECTION TO CONTEXT



ZONES



VEHICULAR ACCESS



TOUCH



TASTE



SIGHT



HEARING

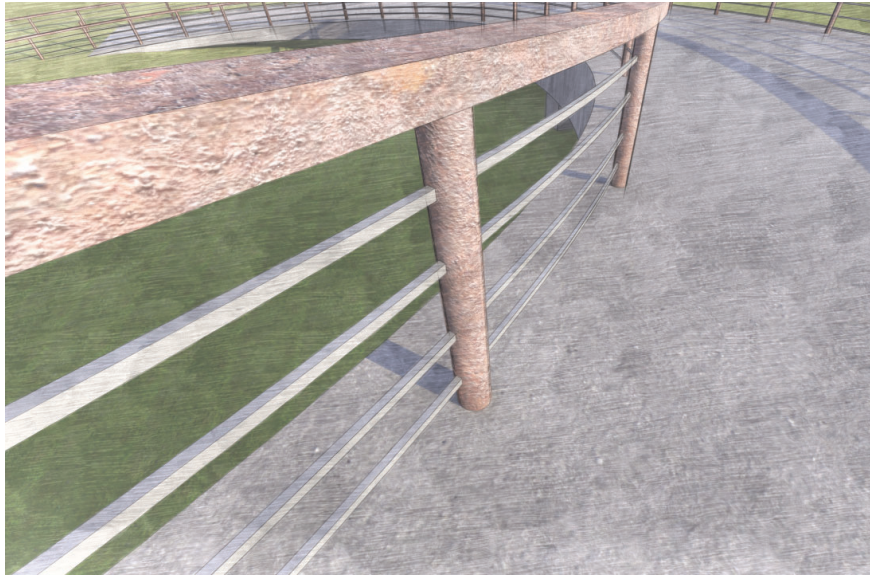
SENSORY GARDEN EXPERIENCES

Sensory gardens are outdoor spaces designed to create an enriching experience through focusing on activating one's senses. Sensory Exploration features five gardens—each designed to target one of the five senses. The smell garden features especially fragrant plantings. The Touch Garden features long walls on site with different textures to experience. Directly adjacent to the recreation building on site is the Taste Garden. Here is envisioned to be a community garden. This garden

can both be used by the cafe within the rec and a learning project for children's groups affiliated with the rec. The Sight Garden is an extension of the art museum, with an outdoor sculpture exhibit. Along with this, there are mounds to the Northeast that enclose the space and play with one's experience of being hidden and exposed. Finally, the Hearing Garden features a linear running water feature and amphitheater for potential audio-focused performances.



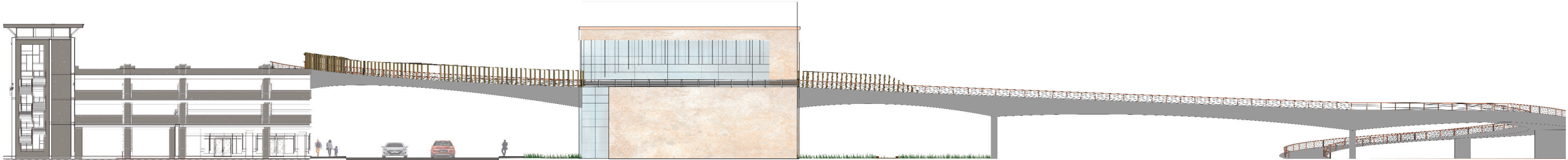
SMELL



BRIDGE DETAIL



BRIDGE DETAIL



SITE SECTION



PEDESTRIAN BRIDGE EXPERIENCE FROM NORTH



PEDESTRIAN BRIDGE LEADING INTO ART MUSEUM FROM SOUTH

The Pedestrian Bridge is built directly into the art museum, allowing users to either pass-by or enter into the museum.



RECREATION CENTER AND OUTDOOR PLAZA

The Recreation Center facilitates many activities and features a grand outdoor plaza space for users to easily be connected to the outside.

