

MANHATTAN MILESTONE PARK

Julia Lasky

Anna Rader

Nathan Siscoe



Context



Inspiration



Sunset over the Flint Hills. *Photo taken by Kansas Office of Tourism & Travel.*



Linear Trail. *Photo taken by Trail Link.*



Railroad. *Photo taken by John Marvig Photography.*

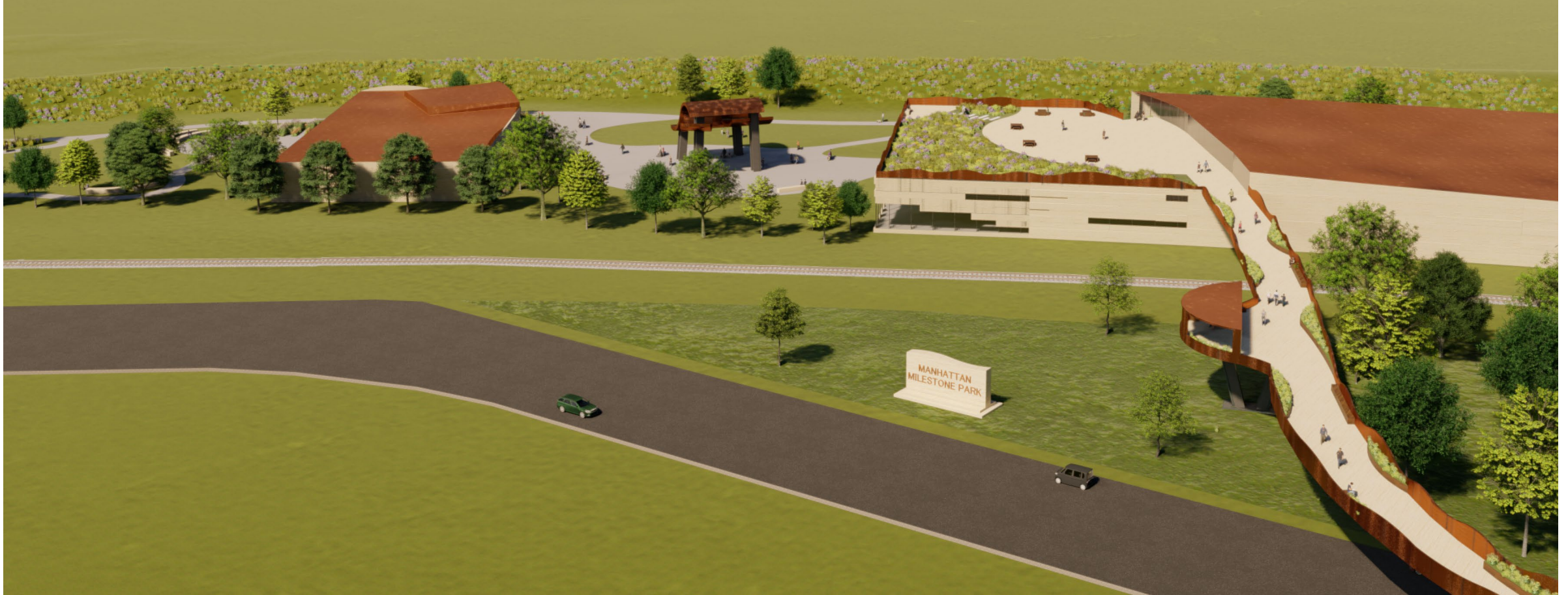


The Kansas Hill, viewable from pedestrian bridge. *Photo taken by the Kansas Collegian.*



The Flint Hills Discovery Center. *Photo taken by TripAdvisor.*

Vision



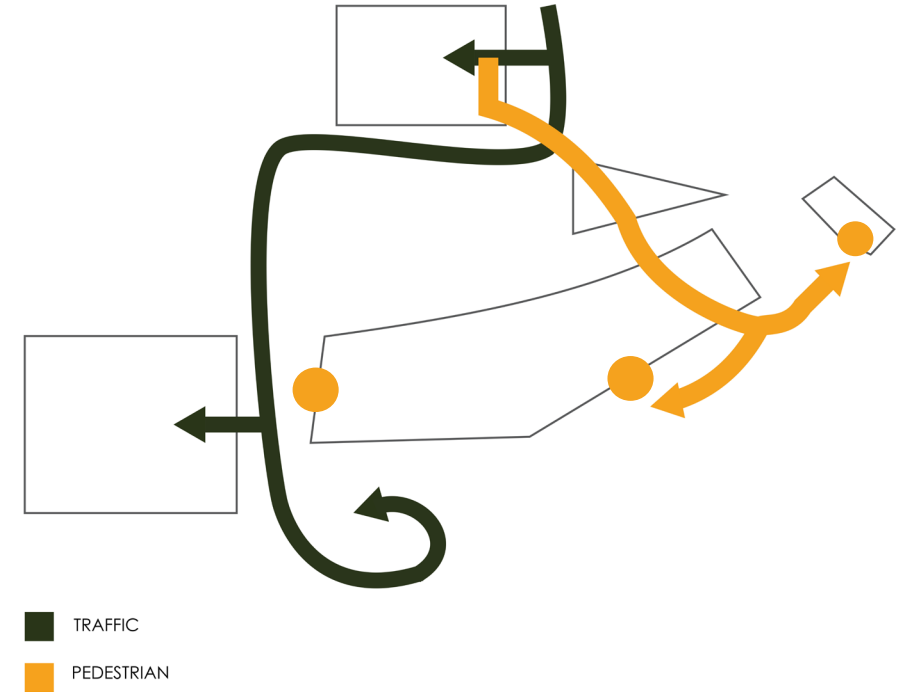
Site Organization



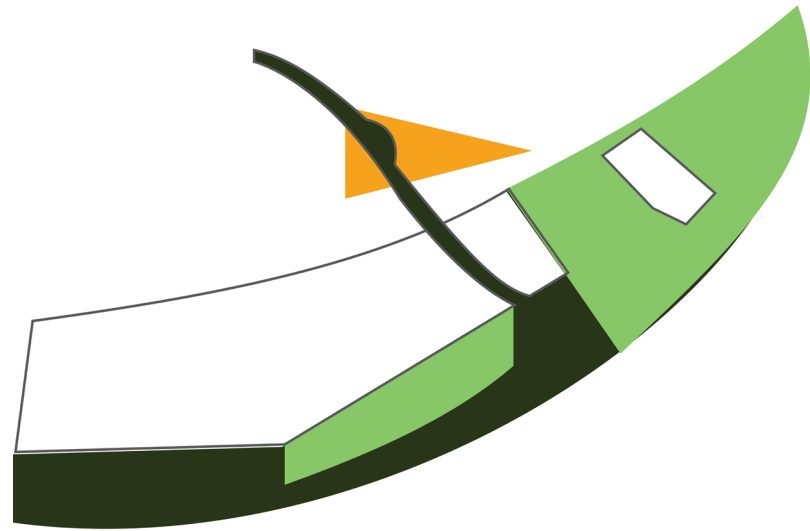
Sequence



Flow and Entries



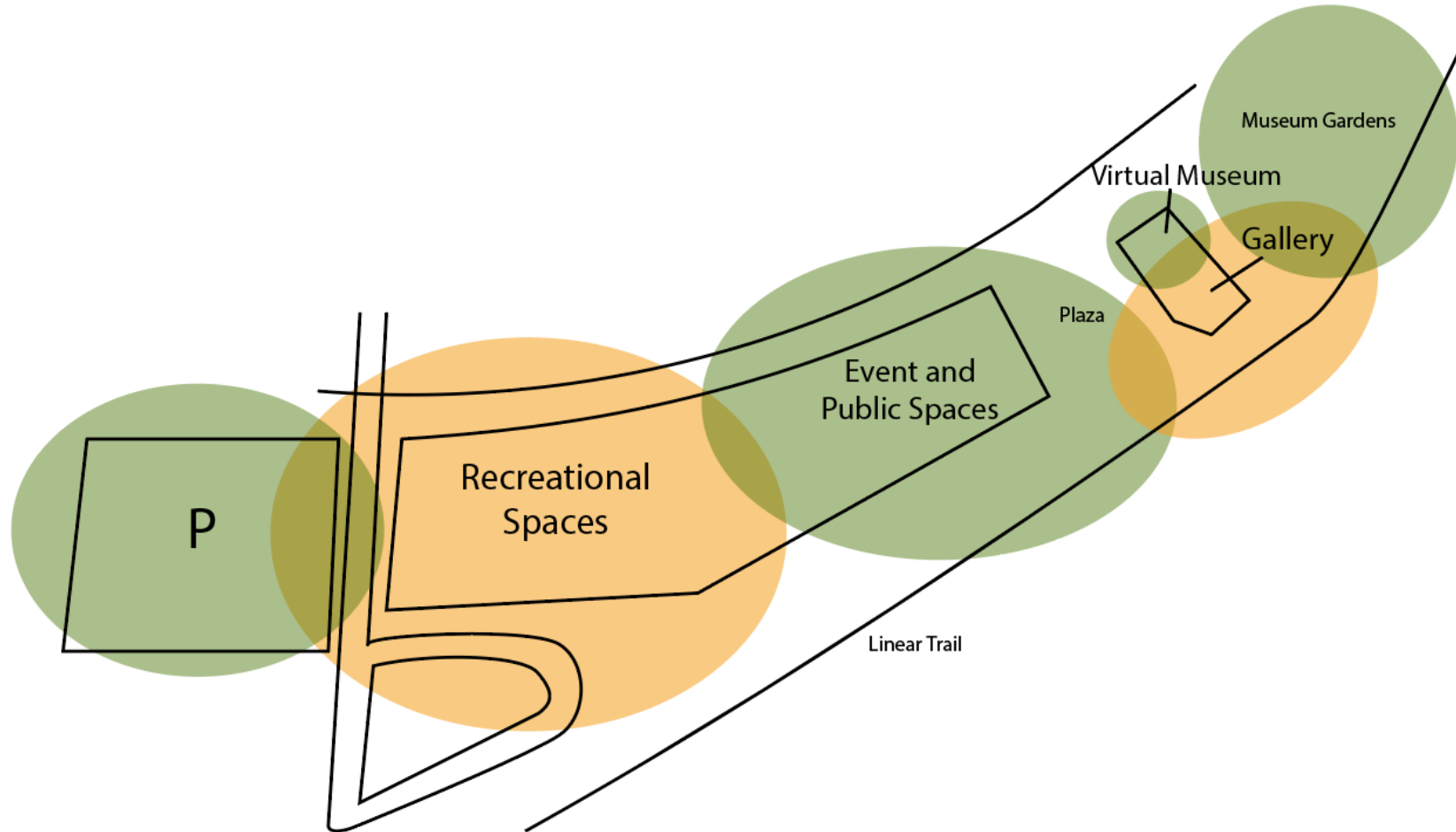
Spatial Designations



- FLEXIBLE
- STATIC
- NATURAL



Program and Orientation



Materiality



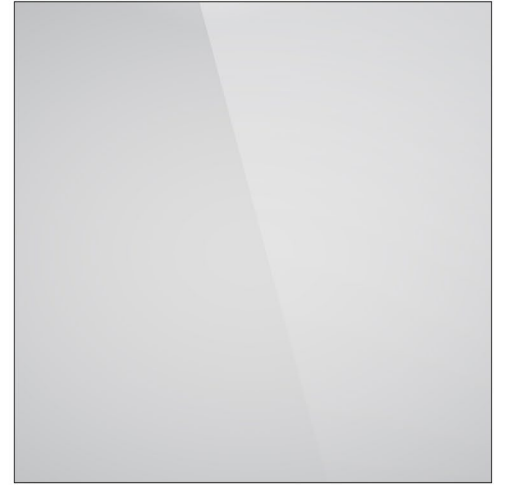
Rusted Metal. *From renderings.*



Dark Steel. *From renderings.*



Limestone. *From renderings.*



Glass. *Taken by Heather Hall.*

Landscape



Big Bluestem. Taken from Agricol.



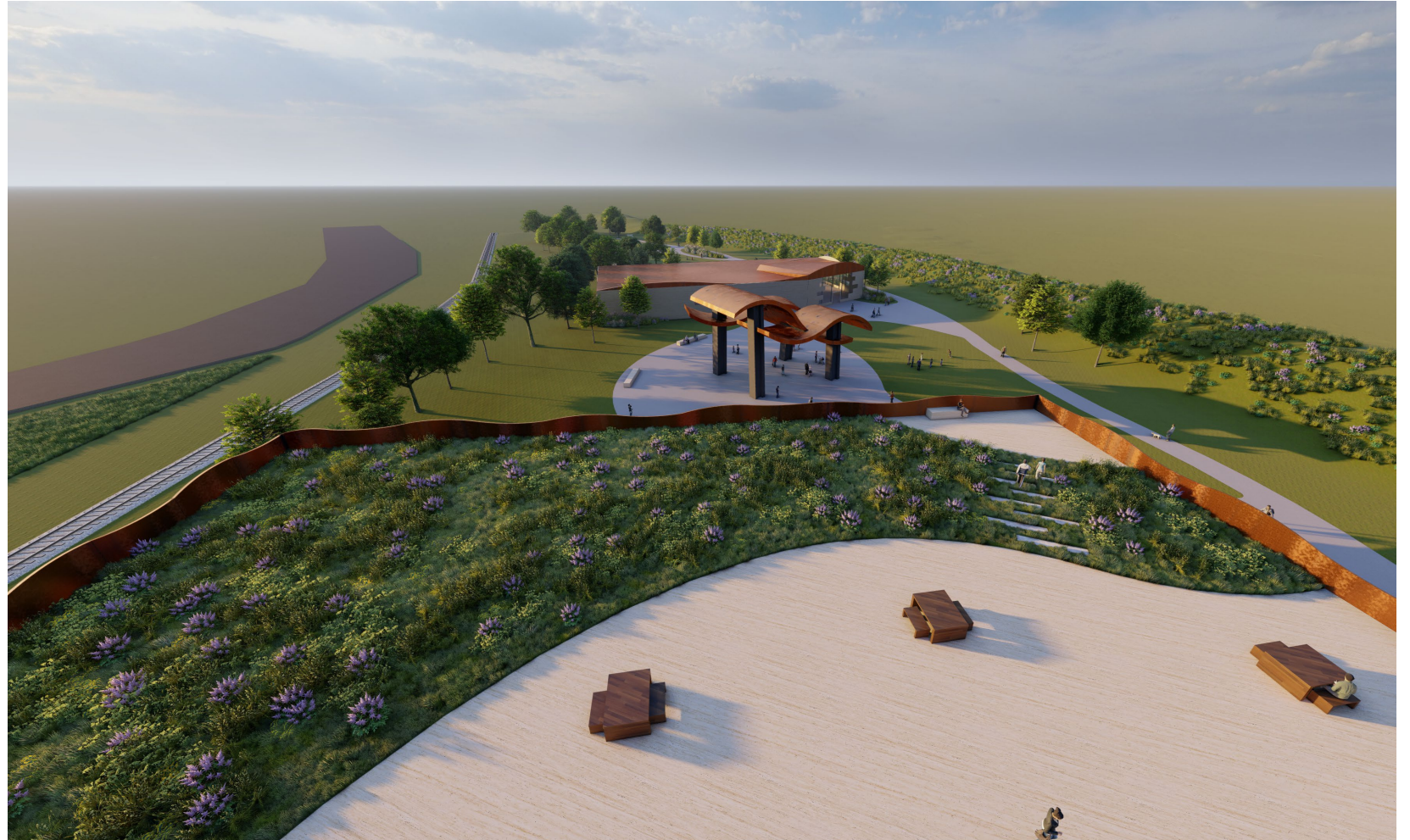
Little Bluestem. Taken from Proven Winners.



Switch Grass. Taken from Landscape Architect's Pages.



Indian Grass. Taken from Tennessee Wholesale Nursery.



The hope for Manhattan Milestone Park is to create a landmark for the city and bring to light the relationship Manhattan creates between its urban scenes and natural destinations. The park is a vision for the future where people of all ages can interact with the culture of Manhattan, its people, and the nature of the city itself.



Sources

- "Big Bluestem (Andropogon Gerardii) - Plants." Agrecol Native Nursery. Accessed January 23, 2020. http://www.agrecol.com/Big-Andropogon-gerardii--Plants_p_367.html. Bluestem-
- "Find Trails." TrailLink, October 1, 1970. <https://www.traillink.com/trail/manhattan-linear-park-trail/>.
- "Flint Hills Discovery Center (Manhattan) - 2020 All You Need to Know BEFORE You Go (with Photos)." TripAdvisor. Accessed January 23, 2020. https://www.tripadvisor.com/Attraction_Review-g38877-d2698960-Reviews-Flint_Hills_Discovery_Center-Manhattan_Kansas.html.
- Forester, Jakki. "Manhattan Boasts Many Must-See Free, Cheap Attractions." The Collegian, August 27, 2013. <https://www.kstatecollegian.com/2013/08/26/manhattan-boasts-many-must-see-free-cheap-attractions/>.
- Hall, Heather, and Heather Hall. "Home Page." Research & Development World. Accessed January 23, 2020. <https://www.rdworldonline.com/>.
- "Panicum Virgatum Heavy Metal." landscape architects pages, May 27, 2015. <https://davisla.wordpress.com/2013/10/09/plant-of-the-week-panicum-virgatum-heavy-metal/>.
- "Prairie Winds® 'Blue Paradise' - Little Bluestem - Schizachyrium Scoparium." Proven Winners. Accessed January 23, 2020. <https://www.provenwinners.com/plants/schizachyrium/prairie-winds-blue-paradise-little-bluestem-schizachyrium-scoparium>.
- "Top 10 Sunrise/Sunset Locations." Top 10 Sunrise/Sunset Locations. Kansas Office of Tourism & Travel, May 30, 2018. <https://www.travelks.com/blog/post/top-10-sunrisesunset-locations/>.
- "Sonoma Farmers Markets and Farms." SonomaCounty.com. Accessed January 23, 2020. <https://www.sonomacounty.com/articles/sonoma-farmers-markets-and-farms>.
- Vandruff Island Railroad Bridge (North). Accessed January 23, 2020. http://johnmarvigbridges.org/Vandruff_Island_RR_Bridge_N.html.
- Whitehead, Janice Nolan, Gerald Raney, Lacie Bradfors, and Priscilla. "Indian Grass." Tn Nursery. Accessed January 23, 2020. <https://www.tnnursery.net/indian-grass-for-sale/>.

