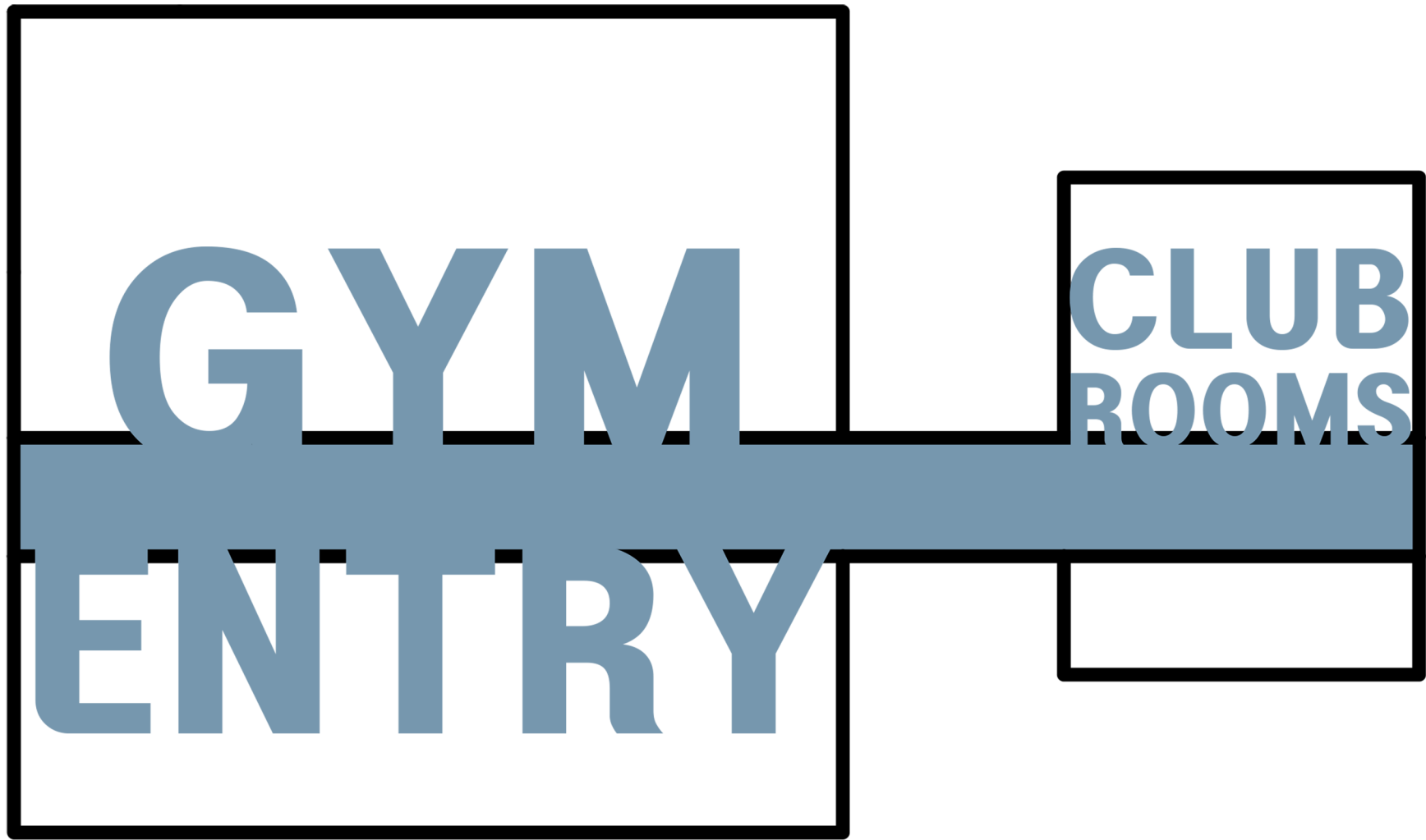


# CICO FIELDHOUSE

BLAKE ROONEY | ARCH 302 | FALL 2023 | FIELDHOUSE

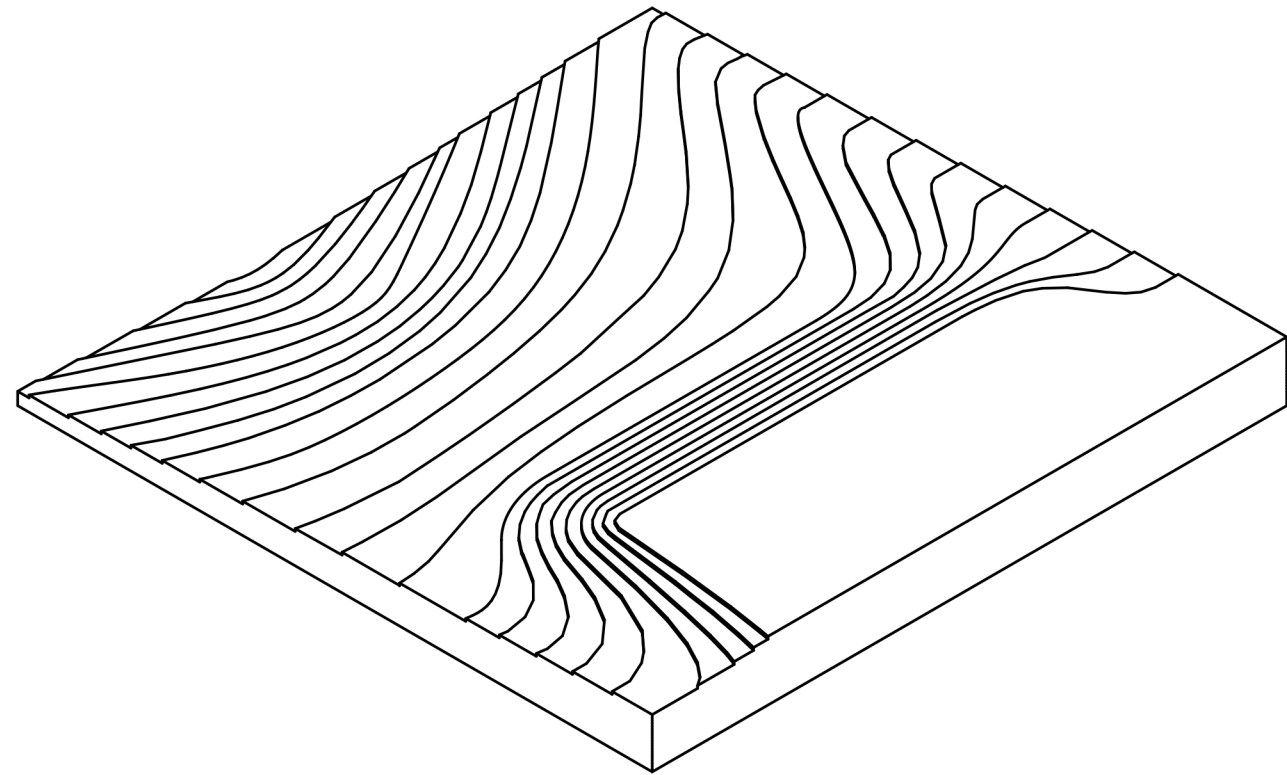


VIEW ON APPROACH



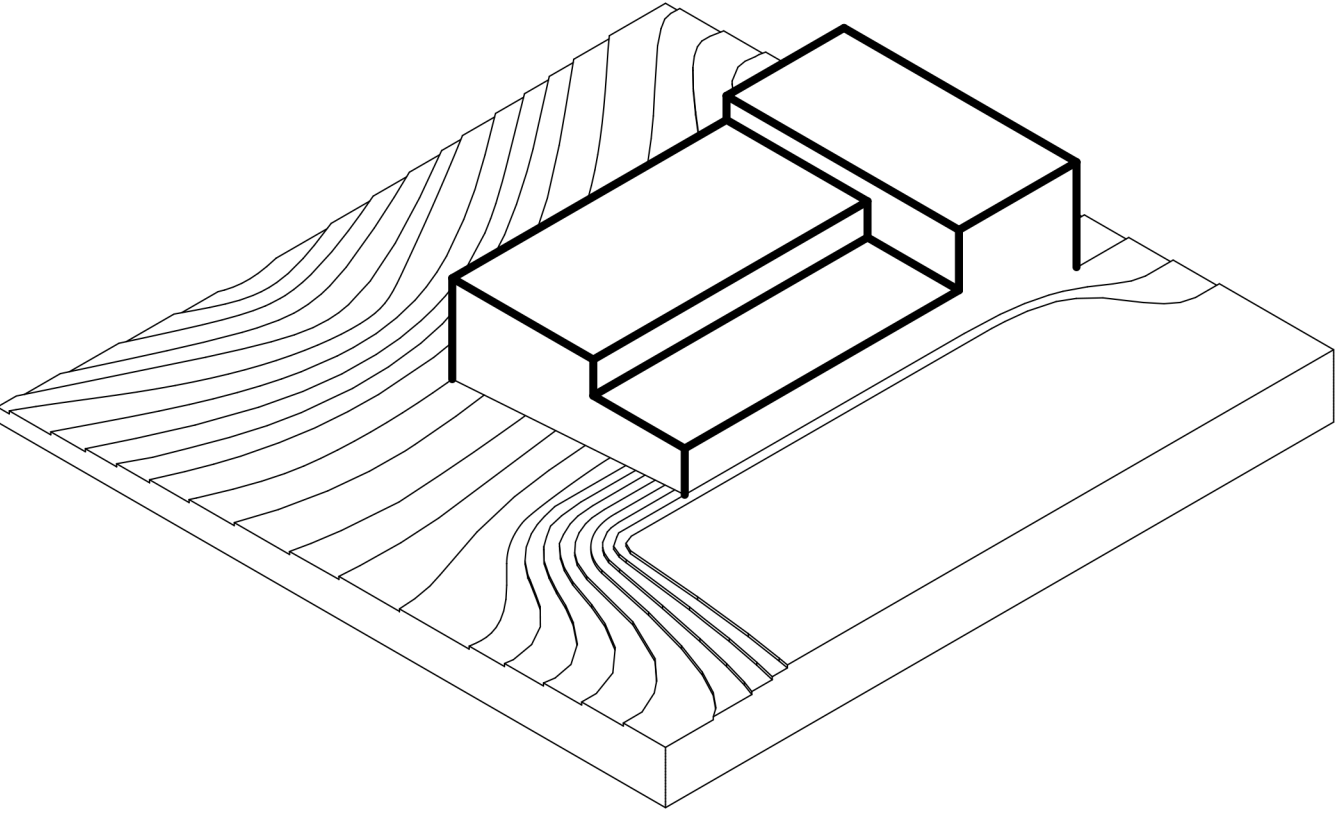
## CONNECTION OF PROGRAM

THROUGH THE USE OF A DATUM A CENTRAL CIRCULATING SPACE IS CREATED. WHICH ALLOWS THE DATUM TO CONNECT THE PROGRAM TOGETHER INTO ONE BUILDING.



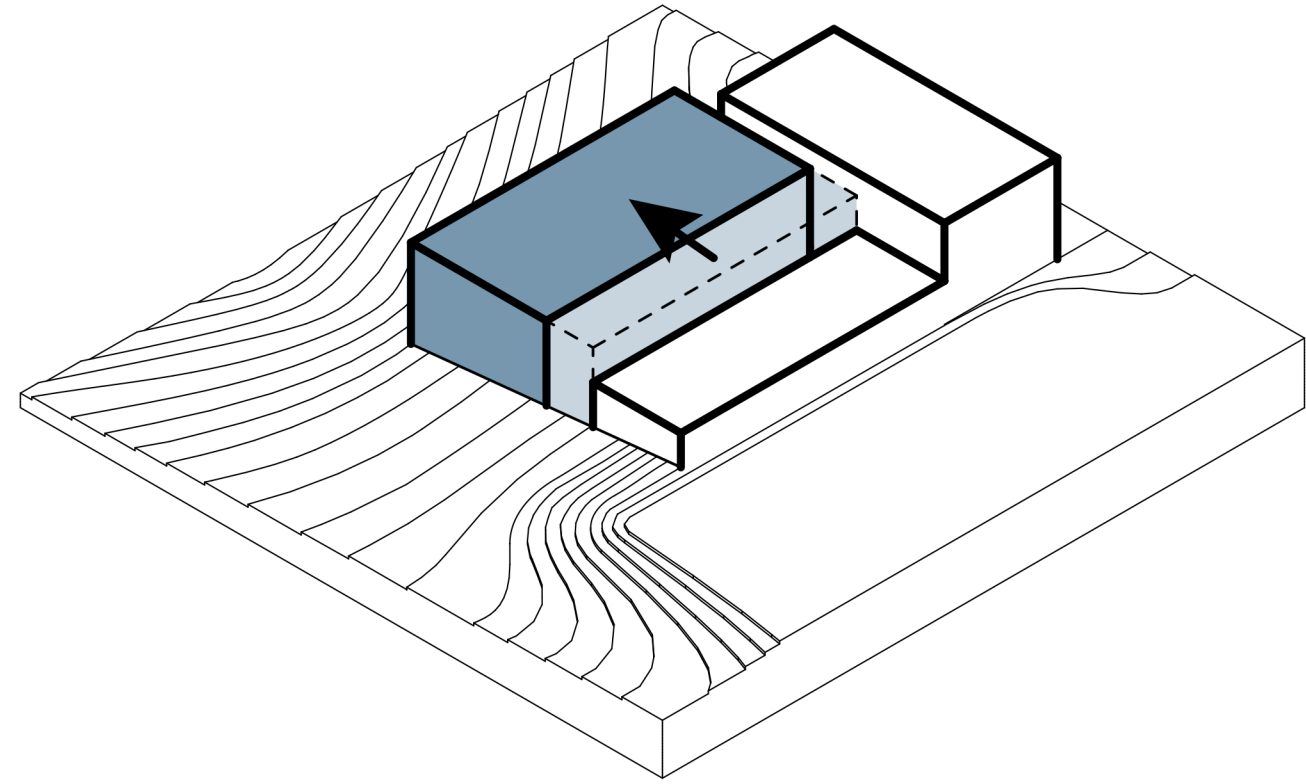
## INITIAL SITE

THE INTIAL SITE OF THE PROJECT IS LOCATED ON THE WESTERN SIDE OF MANHATTAN, KANSAS INSIDE OF CICO PARK. THE INTENTION FOR THE PROJECT IS TO CREATE A FIELDHOUSE THAT OFFERS A VARIETY OF ACTIVITY SPACES FOR THE COMMUNITY.



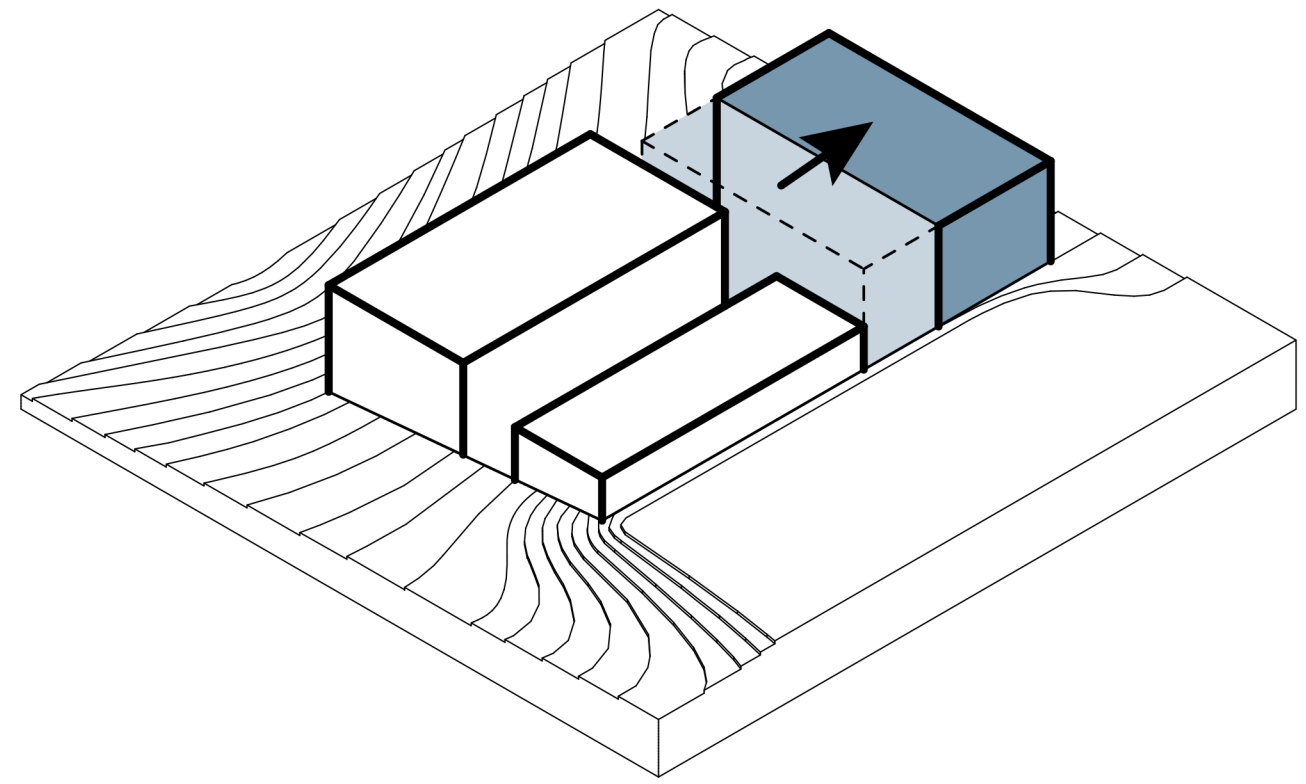
## 01 | INSERT

FIRST DECISION OF THE PROJECT WAS TO PLACE A SET OF MASSES, WITH SIZING RELATING TO THE ASSOCIATED PROGRAM WITHIN EACH MASS. THE MAIN PROGRAMS BEING A GYM, A PAIR OF CLUBS ROOMS, AND LOBBY SPACE.



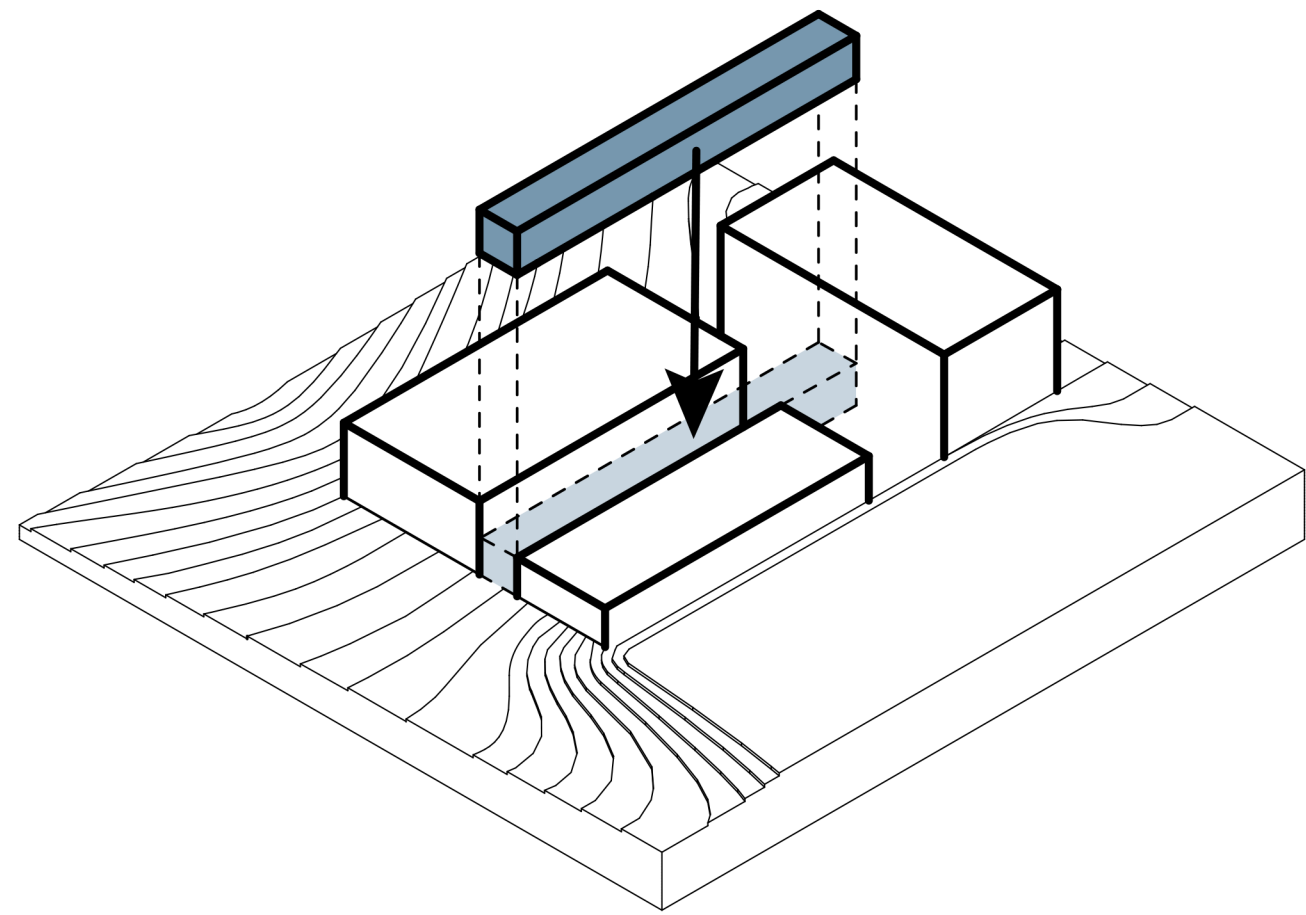
## 02 | SHIFT

THE SECOND DECISION OF THE PROJECT WAS TO SHIFT THE MASS THAT HOUSES THE GYM IN THE WEST DIRECTION. THIS MOVE WAS DONE IN ORDER TO CREATE A SPACE THAT WILL LATER HOUSE A CIRCULATION SPACE, WHICH WILL BE IMPLEMENTED IN A LATER MOVE.



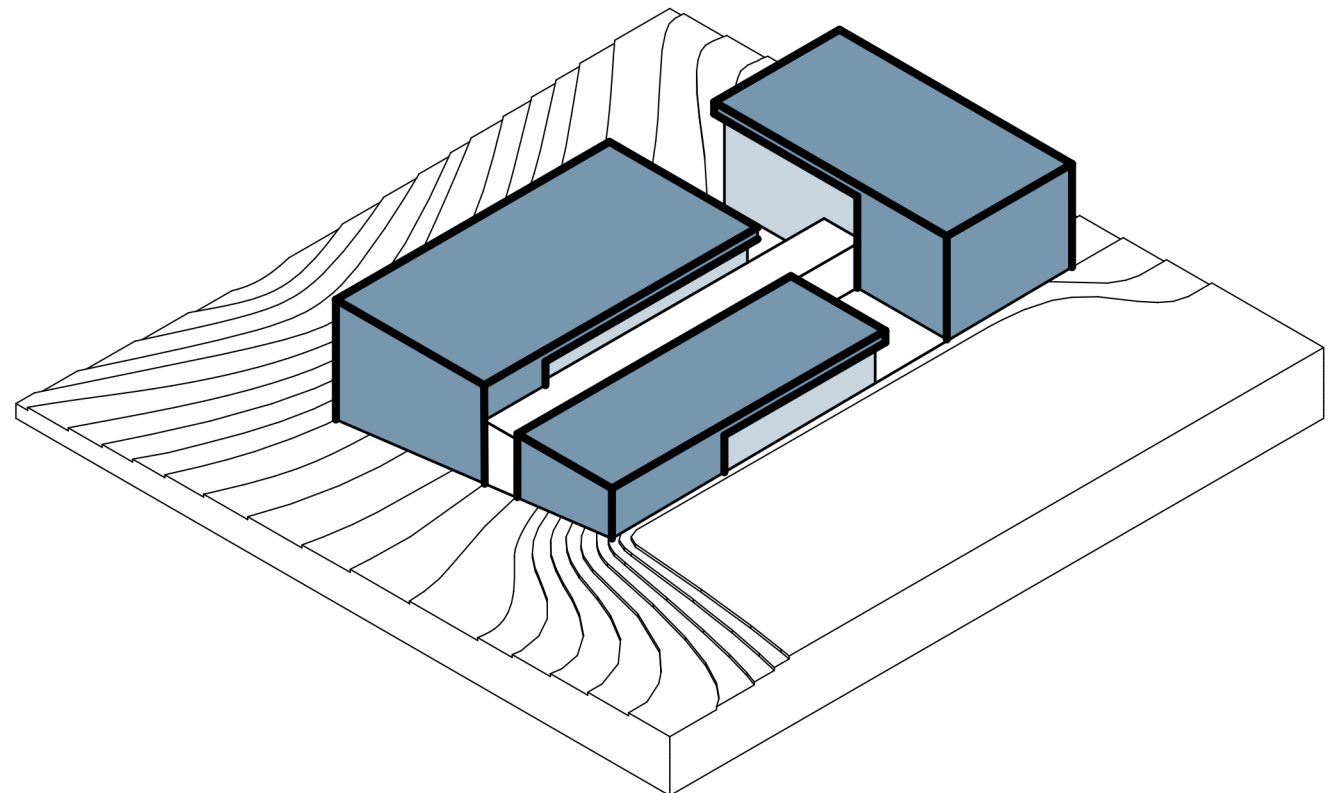
## 03 | SHIFT

THE THIRD DECISION OF THE PROJECT WAS TO MAKE ANOTHER SHIFT ON THE MASS THAT HOUSES BOTH OF THE CLUB ROOMS. SIMILAR TO THE PREVIOUS MOVE, THIS WAS DONE IN ORDER TO CREATE SPACE FOR THE LATER CIRCULATION SPACE. THIS SHIFT CREATED ADDITIONAL SPACE THAT WILL HOUSE GARDENS AND A SERIES OF TERRACED PATIOS.



## 04 | CONNECT

THE FOURTH MOVE FOR THIS PROJECT WAS TO INSERT A MASS THAT WILL ACT AS A CIRCULATION SPACE. THIS SPACE WILL CONNECT THE THREE SURROUNDING MASSES.

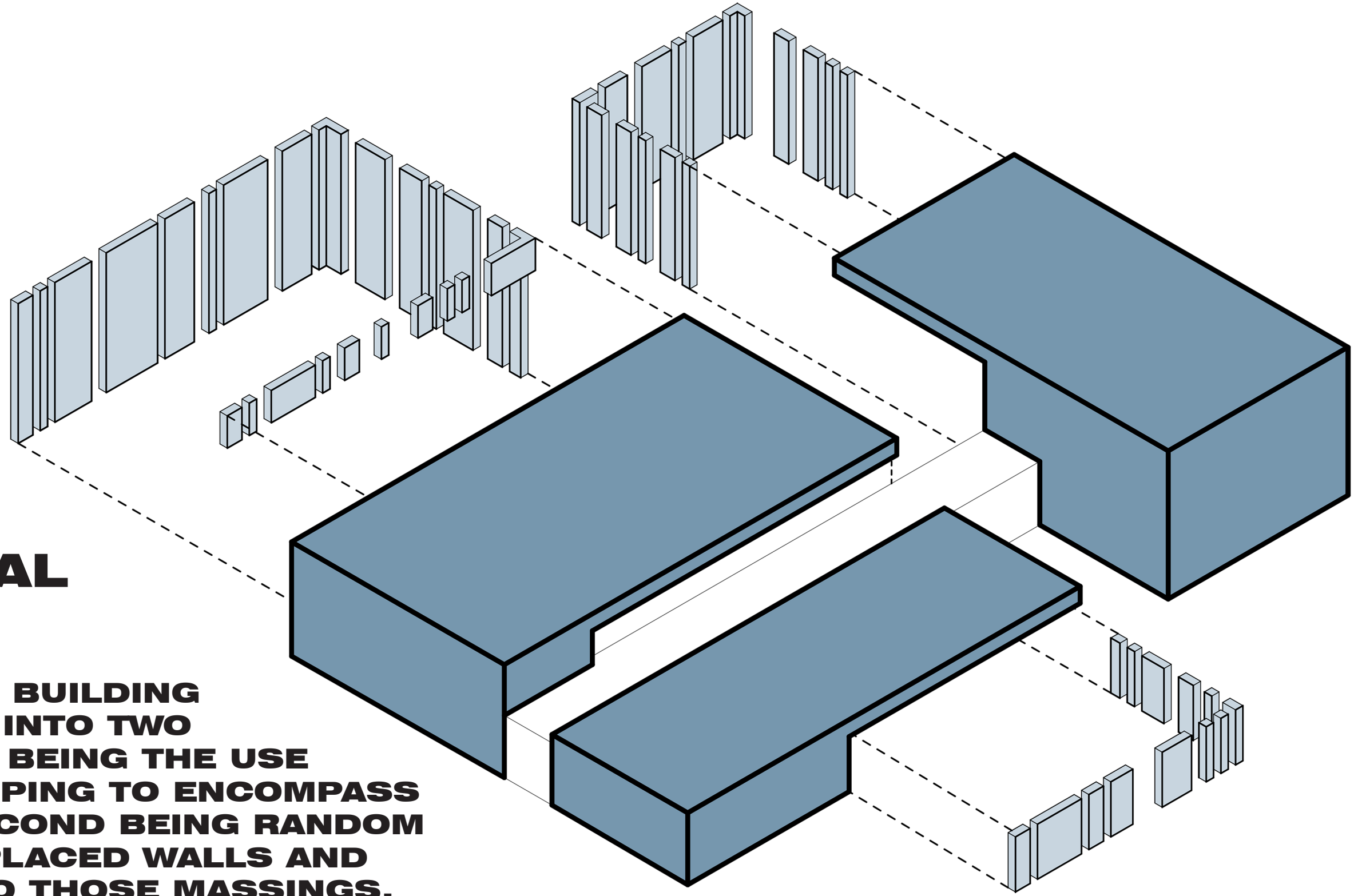


## FINAL MASS

WITH THESE FOUR MOVES THE BASIC PARTI OF THE FIELDHOUSE WAS CREATED. LATER AESTHETIC DECISIONS WERE MADE SUCH AS A WRAPPING AFFECT THAT ENCOMPASSES THE PROGRAM. ALONG WITH A SYSTEM OF PROPORTIONALLY PLACED WALLS AND WINDOWS THAT INFILL INTO THE WRAPPING AFFECT.



CONTEXT MAP



## ARCHITECTURAL LANGUAGE

THE LANGUAGE OF THIS BUILDING CAN BE BROKEN DOWN INTO TWO PARTS. WITH THE FIRST BEING THE USE OF MASSING AND WRAPPING TO ENCOMPASS PROGRAM. AND THE SECOND BEING RANDOM YET PROPORTIONALLY PLACED WALLS AND WINDOWS INFILLED INTO THOSE MASSINGS.

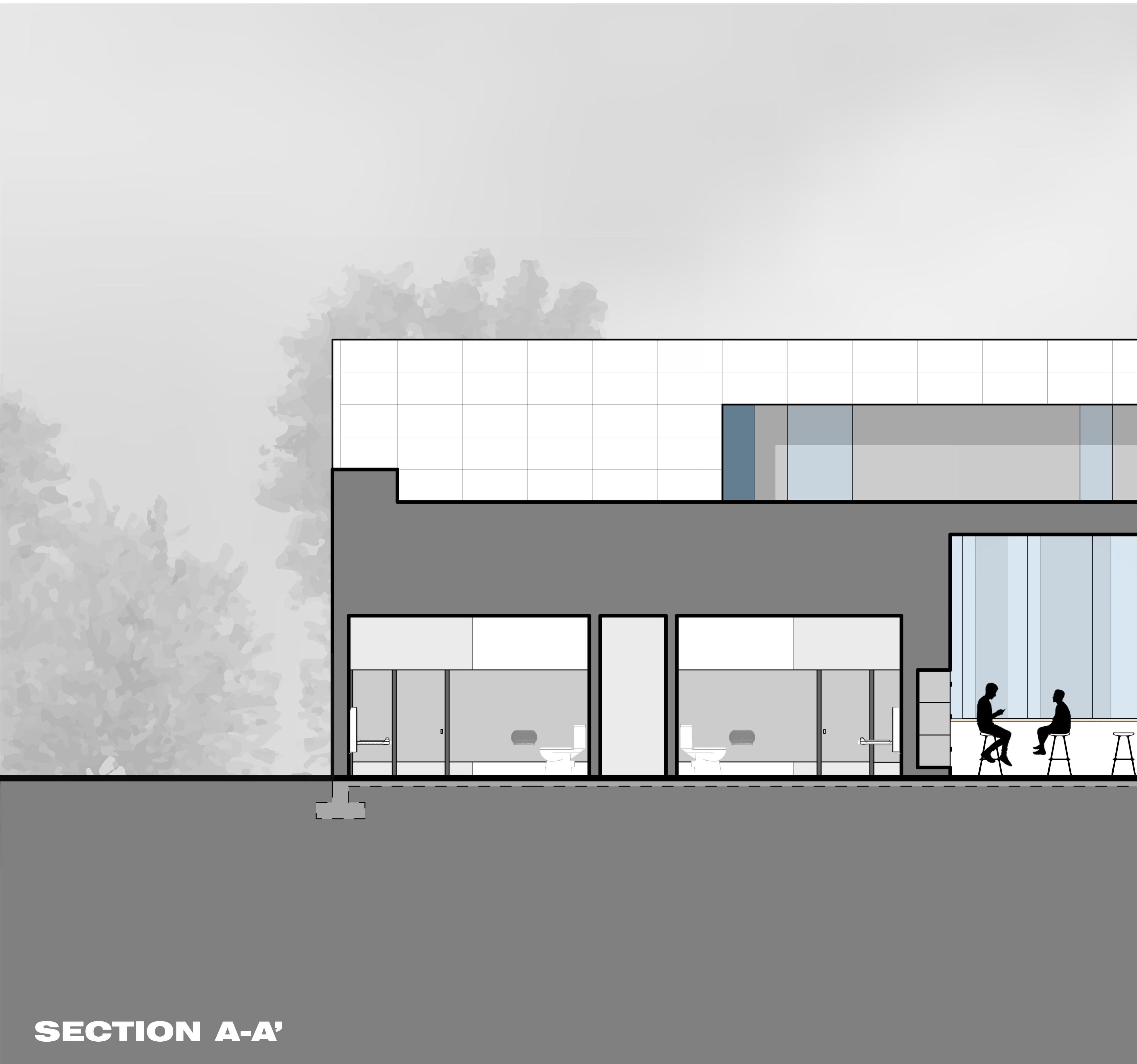
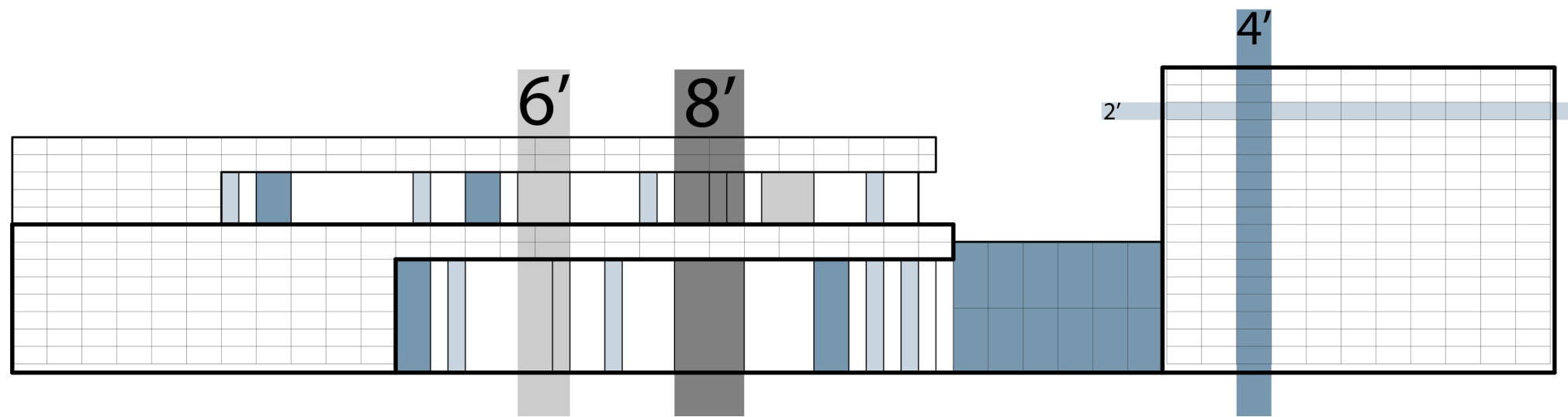


## MAIN LEVEL VIEW

VIEW WAS TAKEN FROM THE MAIN LEVEL BEHIND THE BAR TOP THAT OVERLOOKS THE GYM. THIS VIEW NOT ONLY HIGHLIGHTS THE DATUM CIRCULATION SPACE, BUT ALSO HIGHLIGHTS THE PROPORTIONED WINDOW AND WALL INFILL CONDITION.

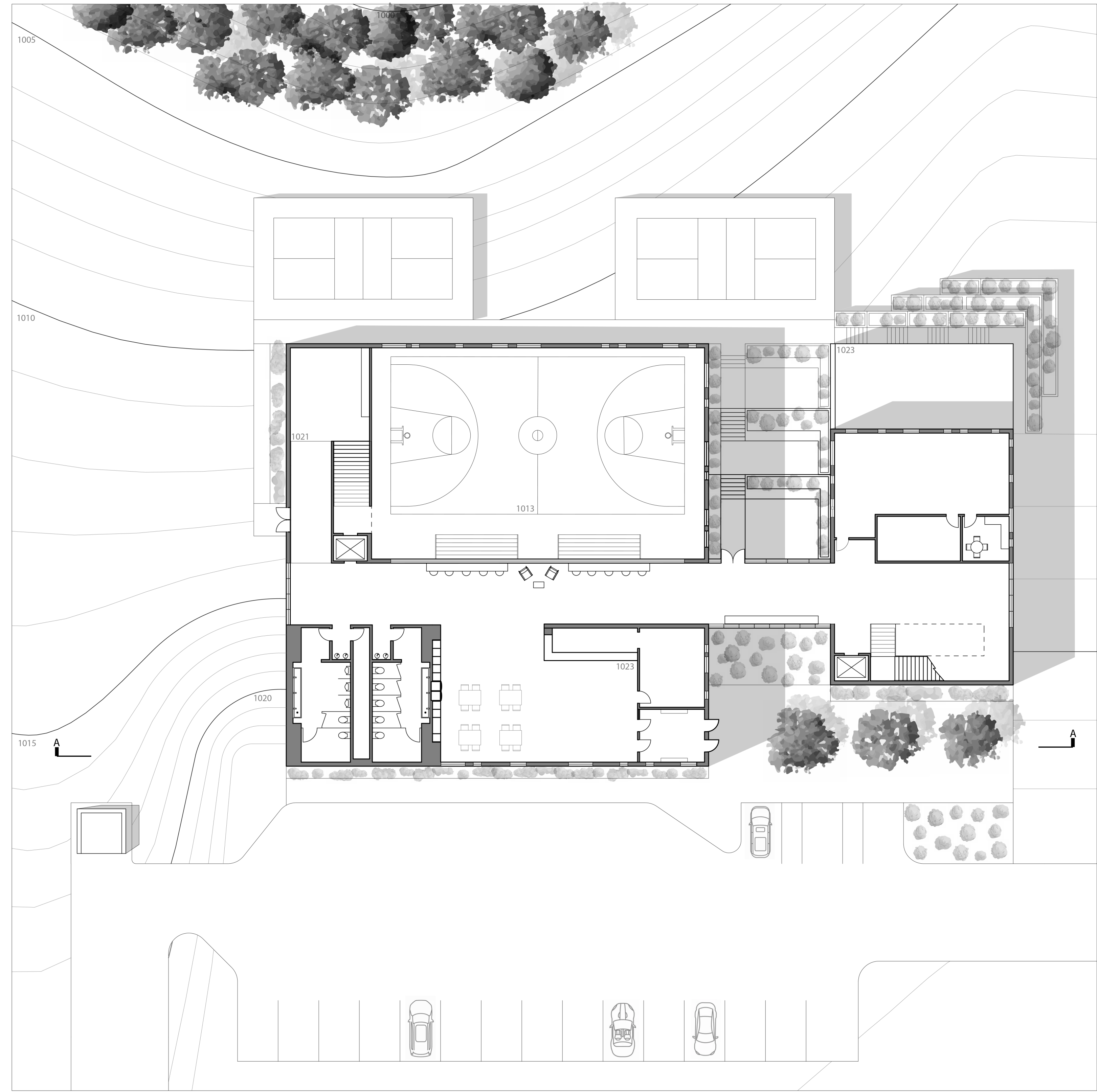
## LANGUAGE PROPORTIONS

A PROPORTIONING SYSTEM OF MULTIPLES OF TWO WAS USED AS A TOOL IN THE CREATION OF THE ARCHITECTURAL LANGUAGE.



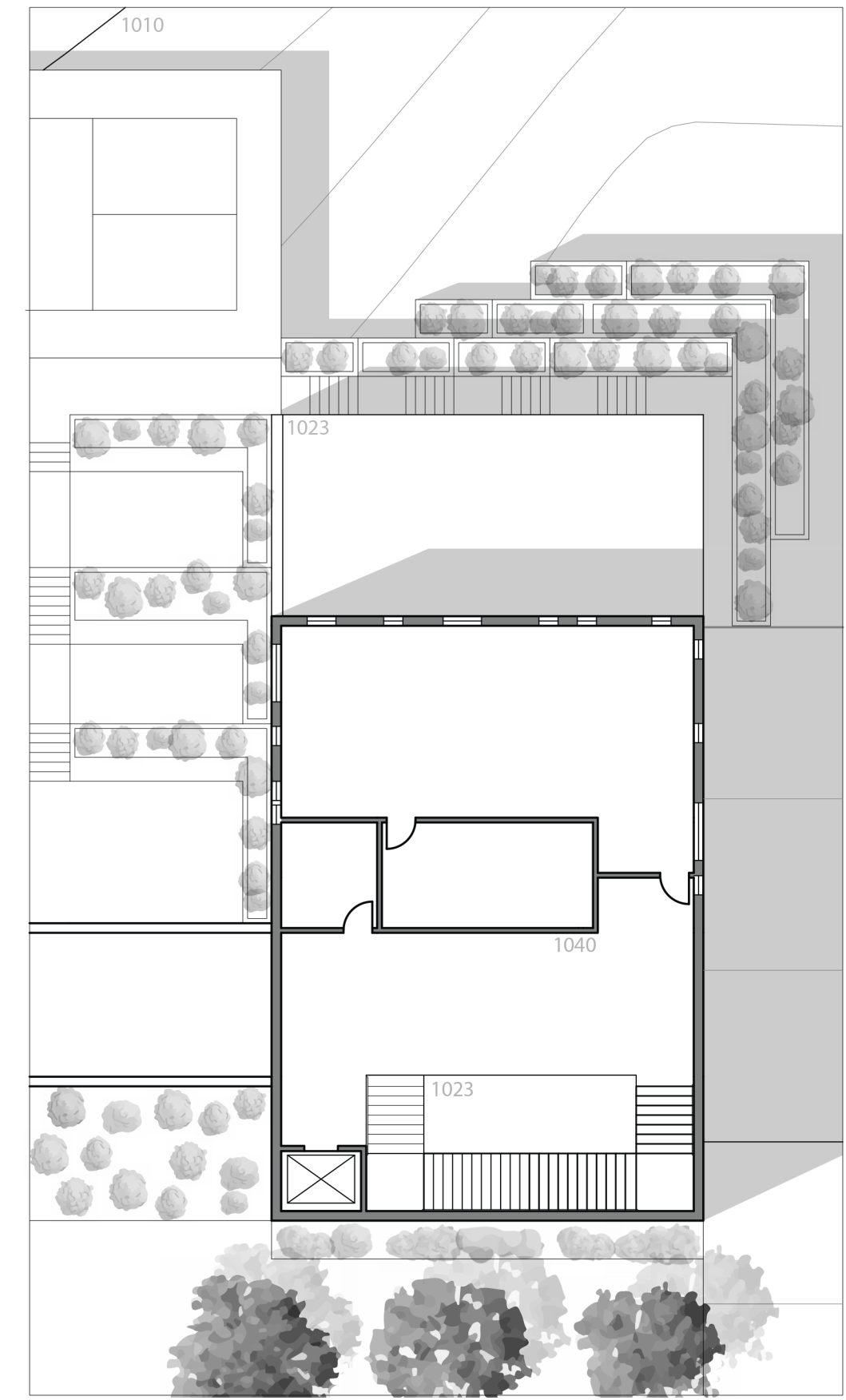
SECTION A-A'





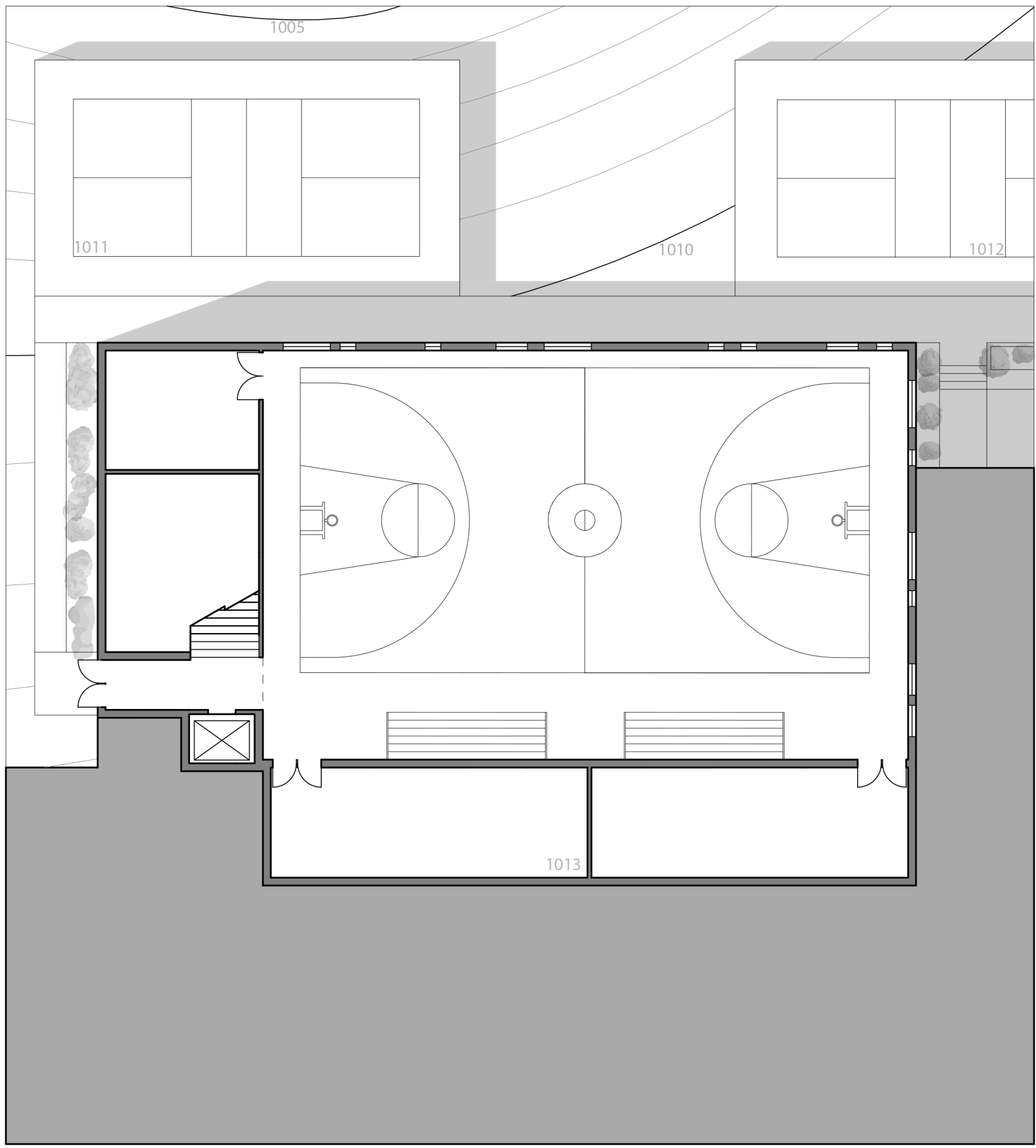
MAIN LEVEL

1/16"=1'-0" 0 4 8 16 24



UPPER LEVEL

1/16"=1'-0" 0 4 8 16 24



LOWER LEVEL

1/16"=1'-0" 0 4 8 16 24



EAST ELEVATION

1/16"=1'-0" 0 4 8 16 24

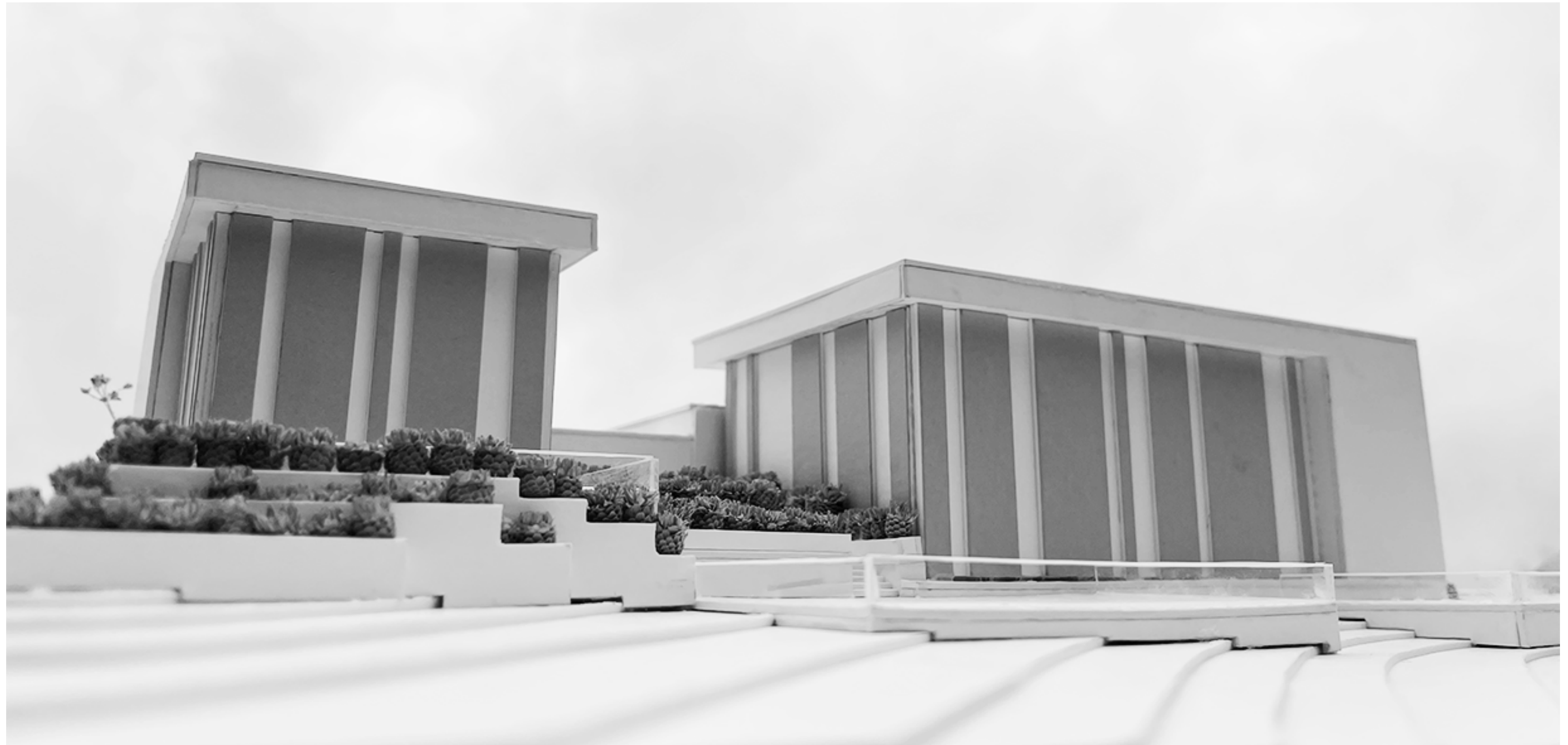
EAST VIEW OF THE FIELDHOUSE NOT ONLY HIGHLIGHTS THE INITIAL VIEW ON APPROACH. BUT IT ALSO HIGHLIGHTS THE MONUMENTAL QUALITIES OF THE MASSING TO INFILL CONDITION.



WEST ELEVATION

1/16"=1'-0" 0 4 8 16 24

WEST VIEW OF THE FIEDLHOUSE HIGHLIGHTS A SERIES OF PATIOS, THREE BEING TERRACED. WHILE ALSO OFFERING TERRACED PLANTERS. TWO PICKLEBALL COURTS ARE ALSO PRESENT.

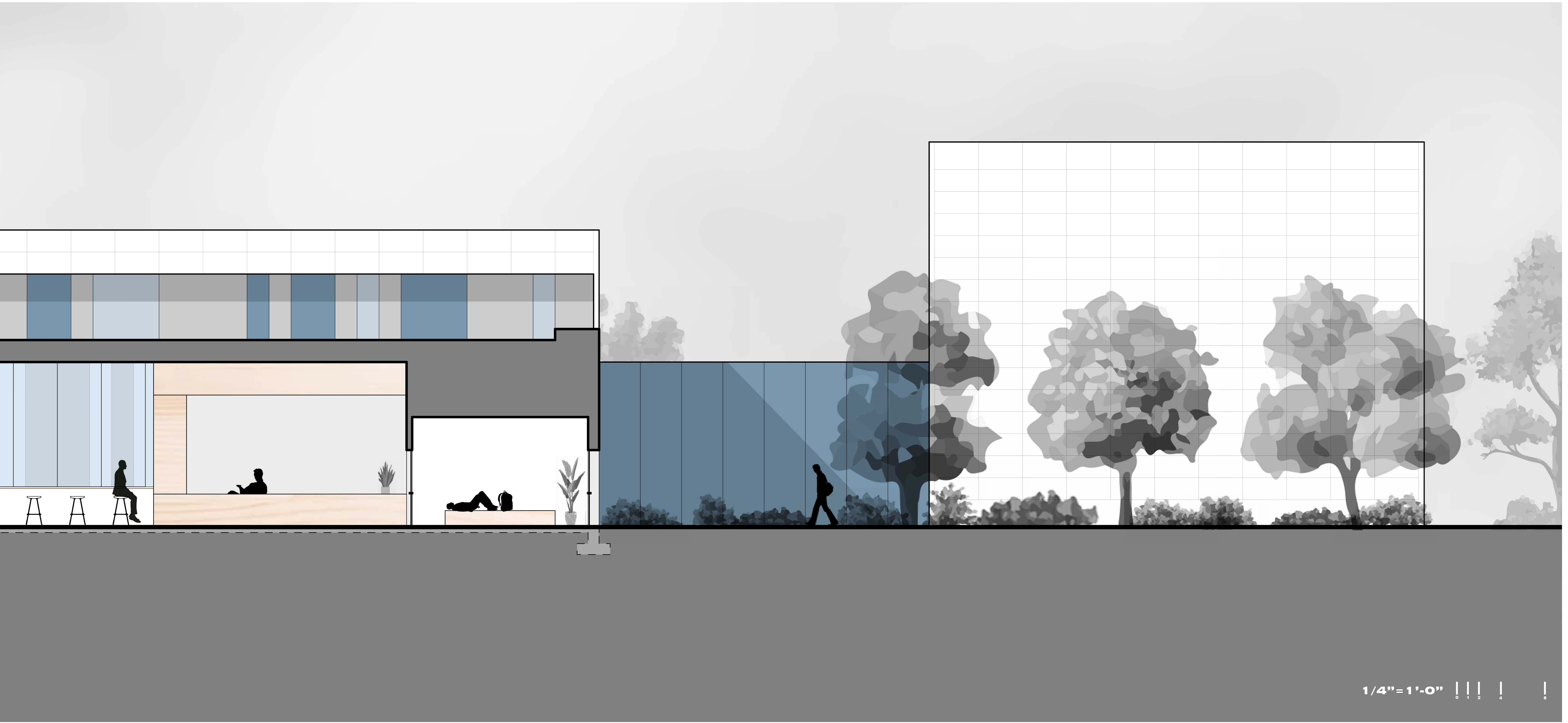


WEST VIEW



COURT VIEW

VIEW WAS TAKEN FROM HALF-COURT ON THE BASKETBALL COURT LOOKING NORTH-EAST. THIS VIEW HIGHLIGHTS THE BAR TOP WINDOW THAT'S ELEVATED ABOVE THE GYM. WHILE ALSO HIGHLIGHTING THE INFILL CONDITION AGAIN.



1/4"=1'-0" 0 4 8 16 24