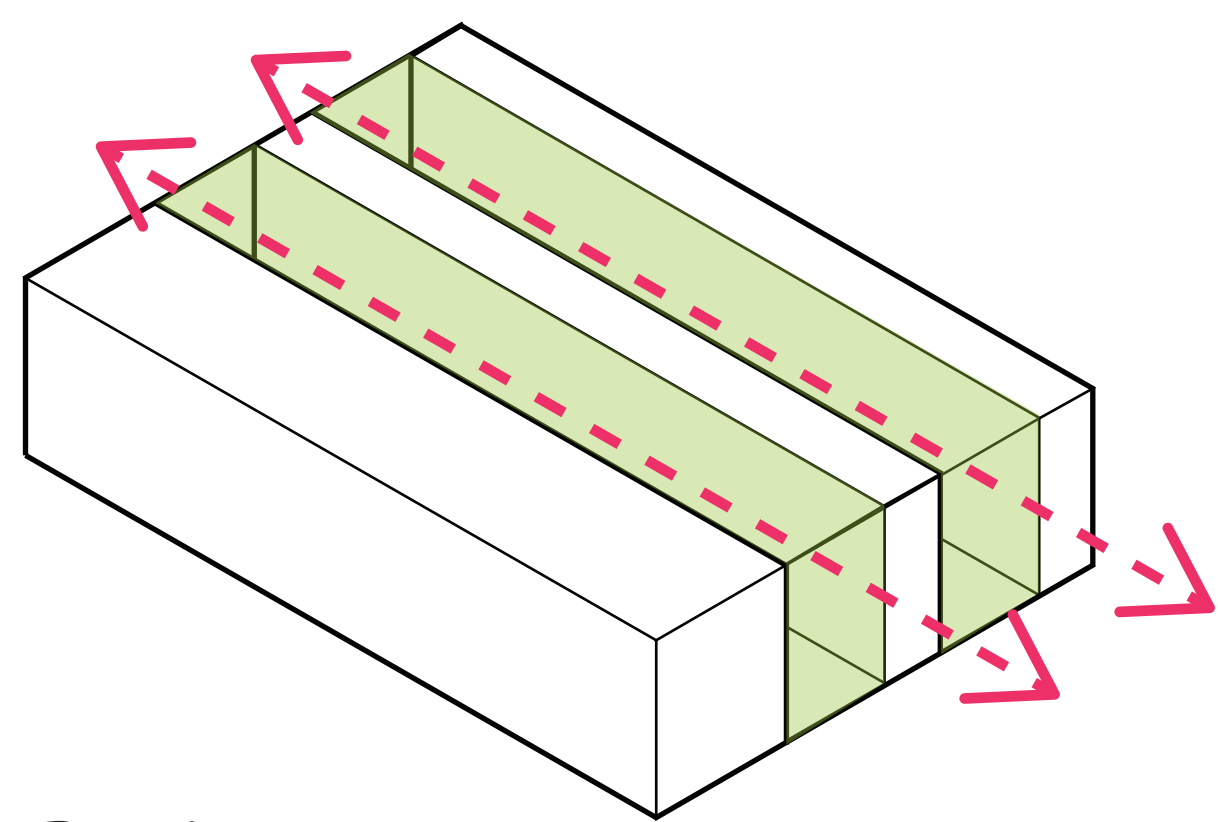
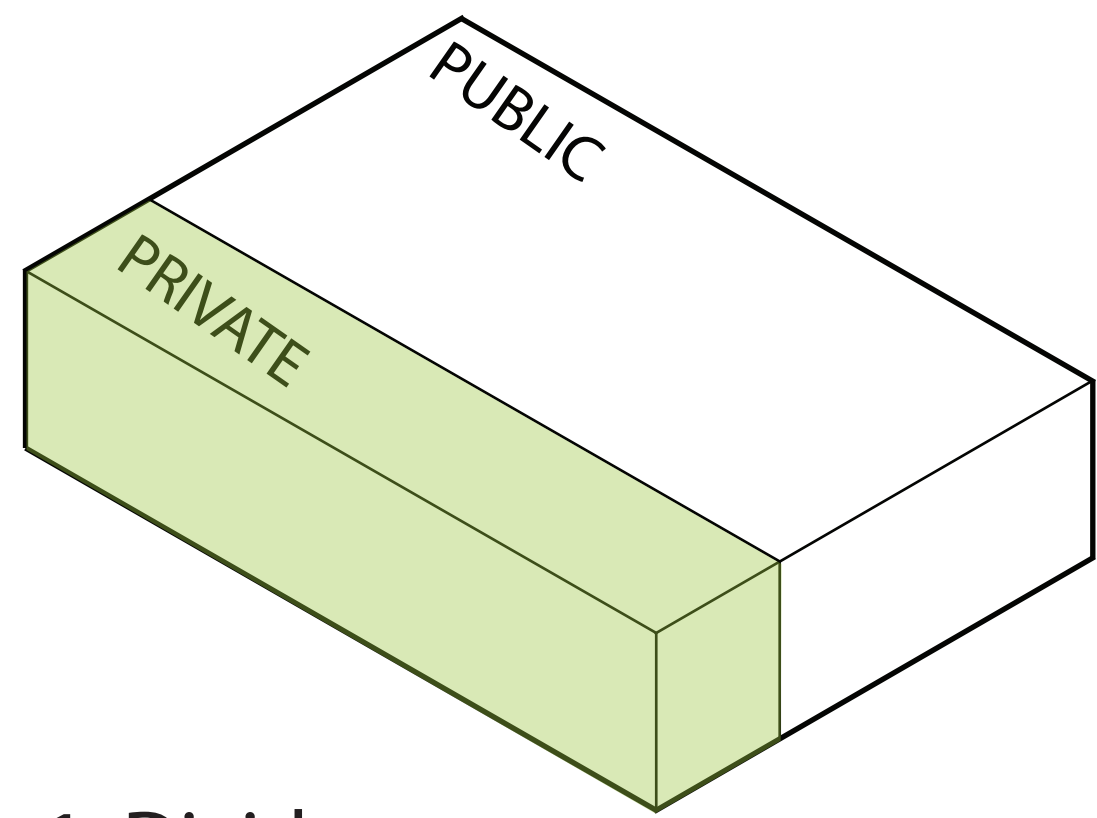


# ALMA BRANCH LIBRARY | Jaidyn Goebel | Spring 2022



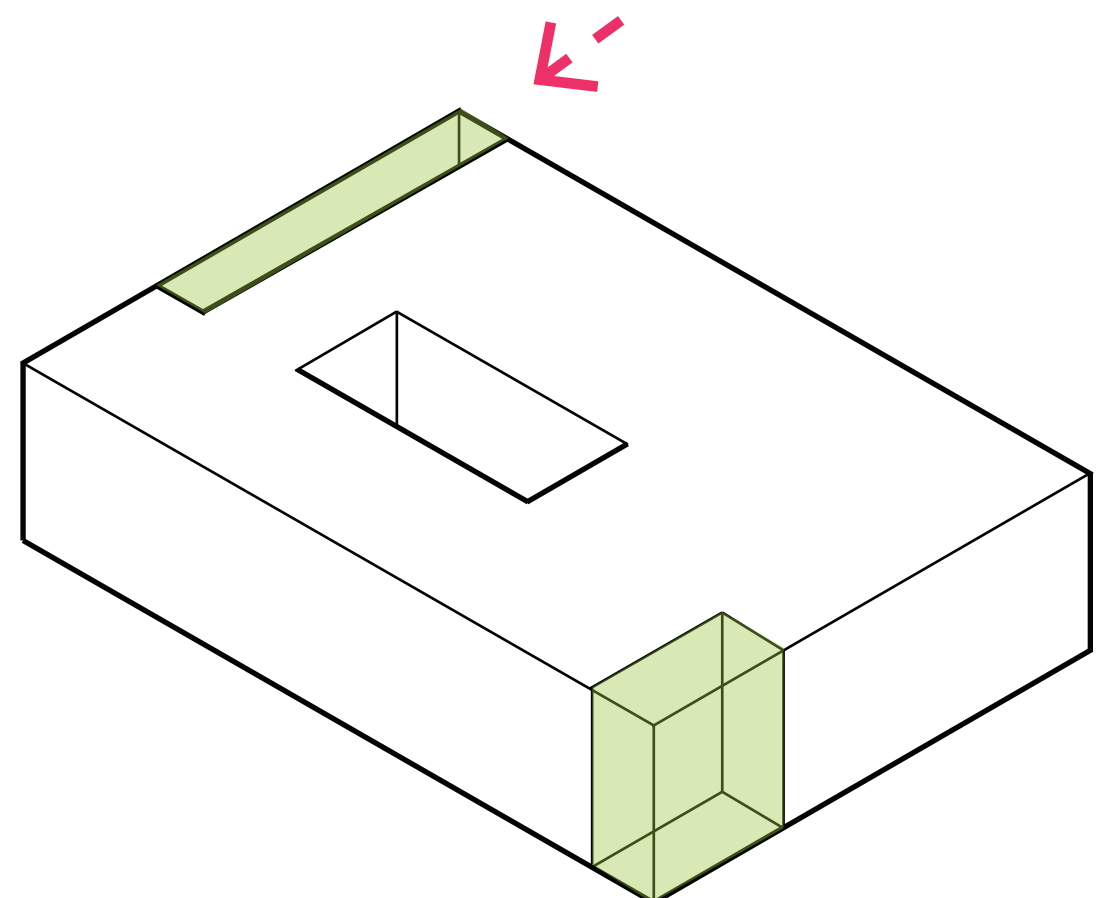
## Parti

A series of bars alternating solid and porous, creates visual connection to each end of the site as well as closed off spaces for core, privacy, higher degree of enclosure.



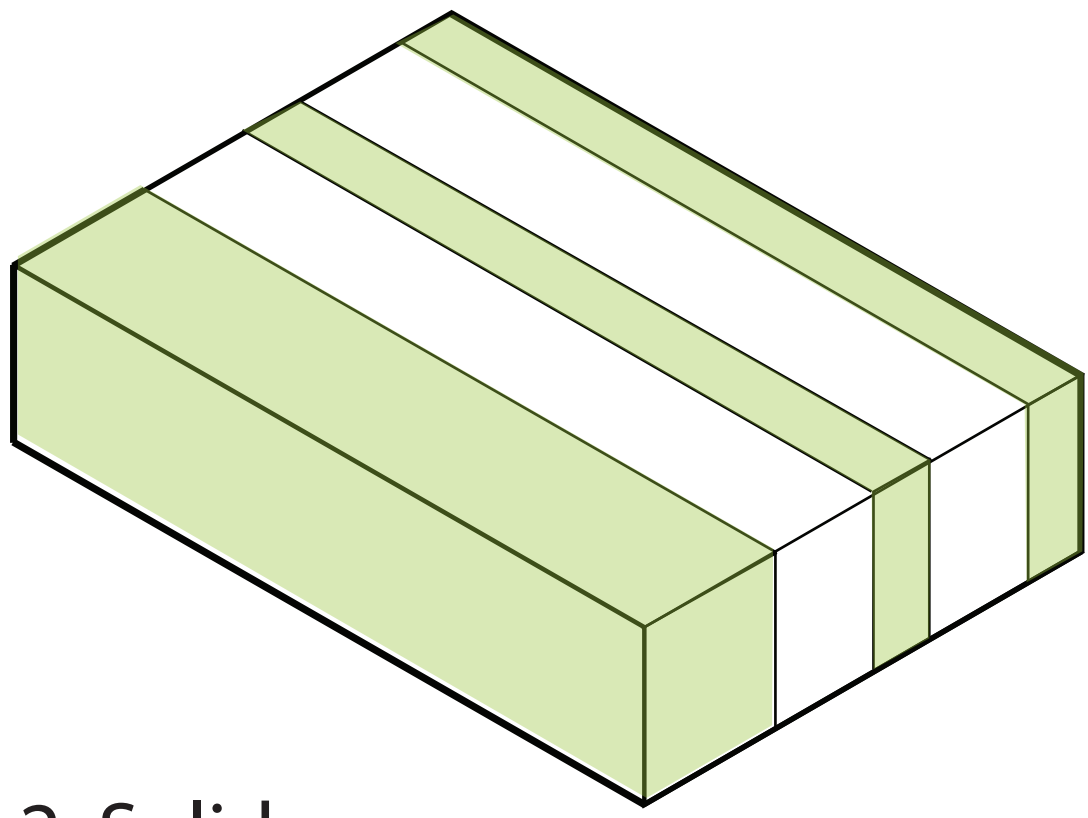
## 1: Divide

The site is divided into a bar for private support program and a larger side for public spaces. This creates a clear separation for staff and support spaces to be out of the way while public spaces are at the forefront.



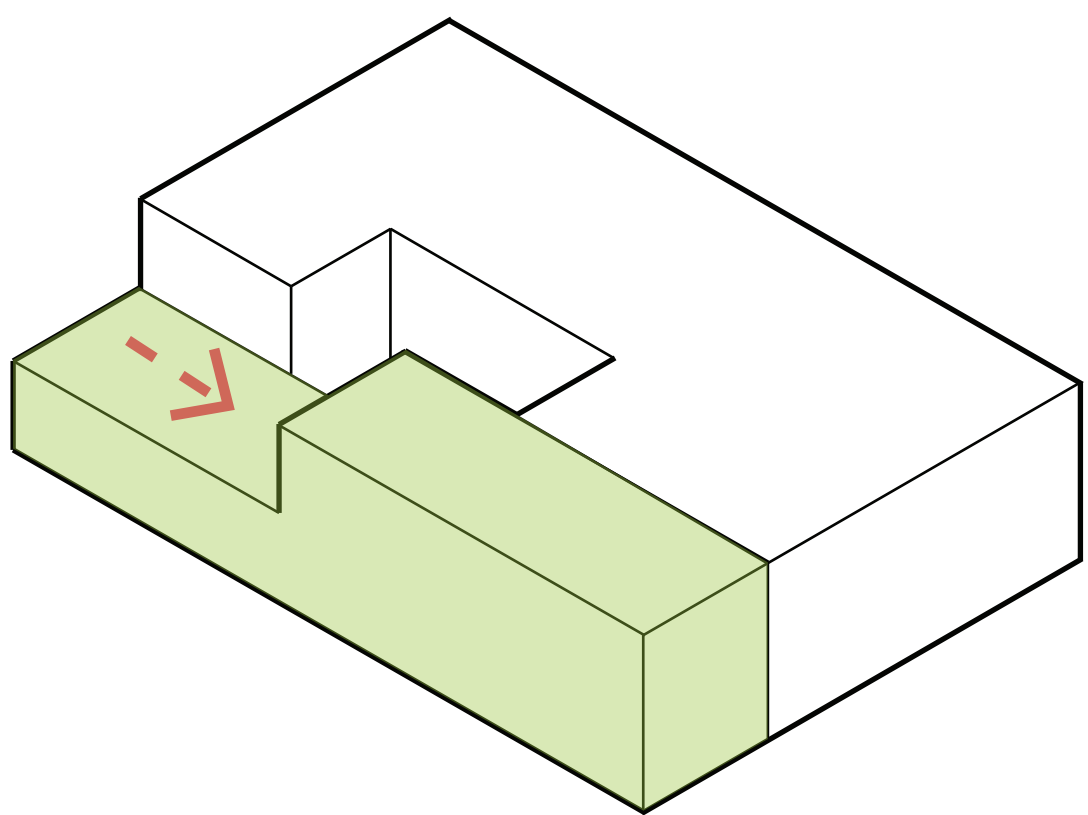
## 4: Recess

Entry plazas and walkways indicate entry locations by recessing the corners leading up to the entries. These recessed spaces provide areas of rest from the primary circulation on main street and connection to the back alley.



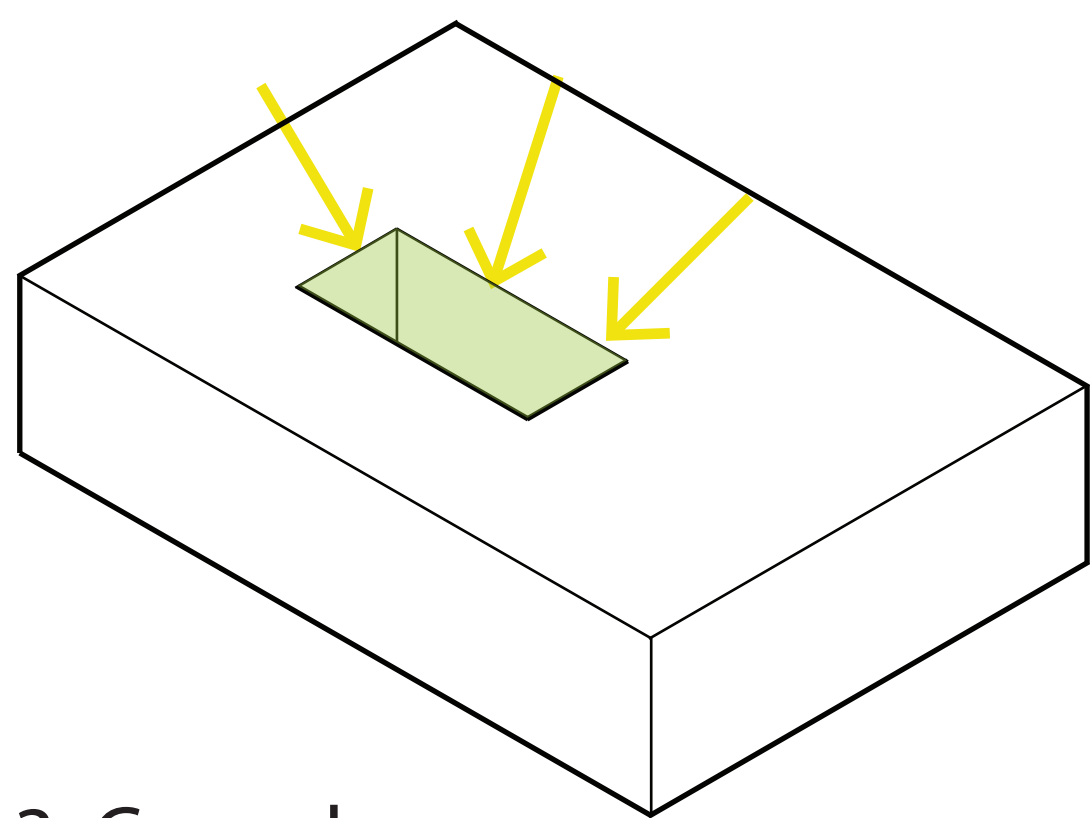
## 2: Solids

Three bars of an architectural language using solid walls and higher degrees of enclosure were organized to create spatial division and axes through the site that circulation would rely on.



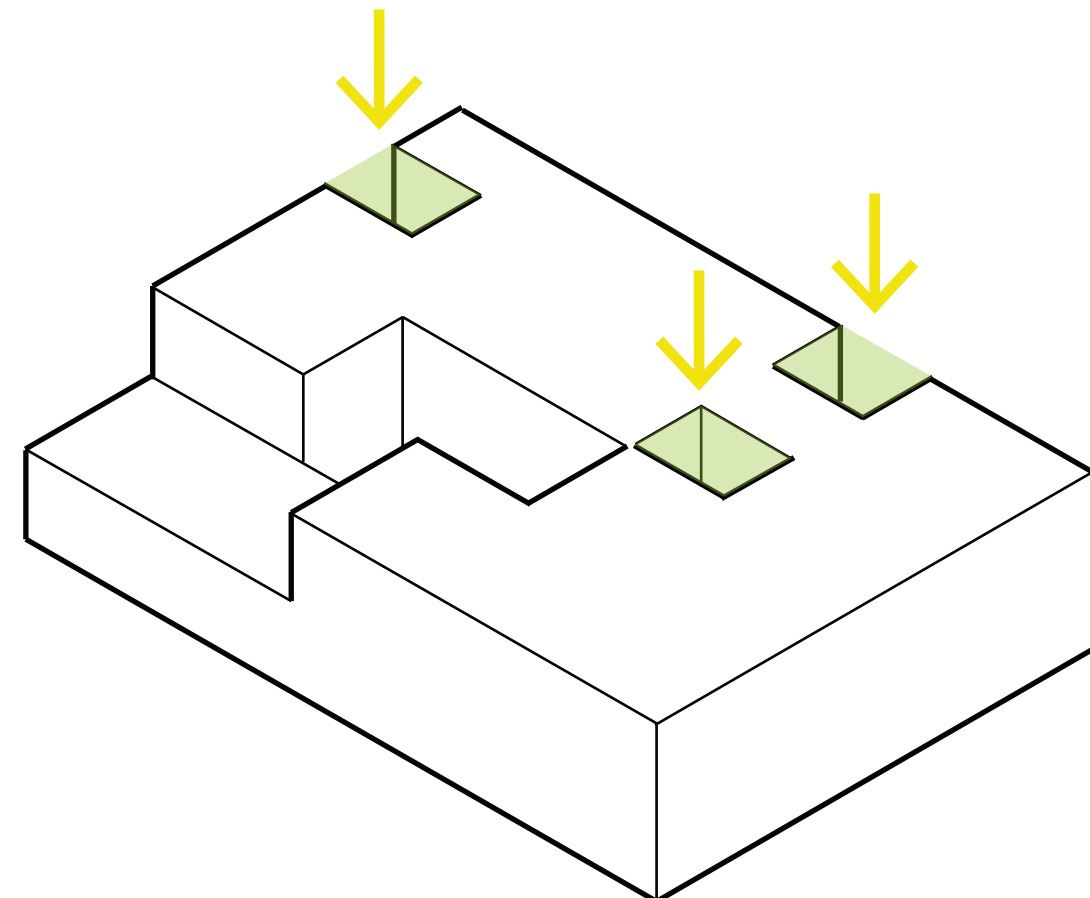
## 5: Push back

The second floor of the solid bar is pushed back to allow natural light to the courtyard and open up the roof to the staff spaces for smaller sky-lights.



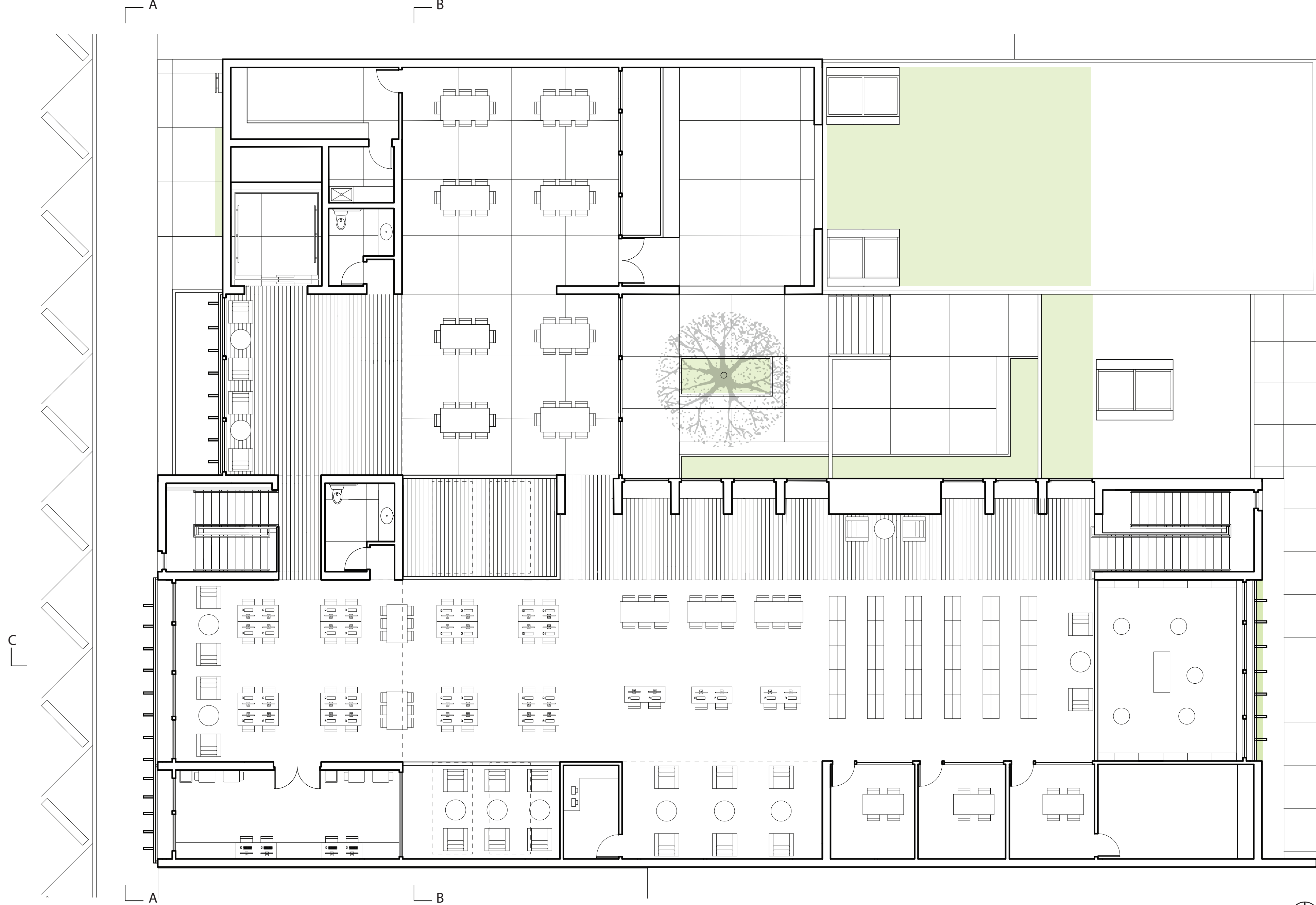
## 3: Carved

A courtyard space is carved out from the center of one of the axes allowing natural light to flood in from inside.



## 6: Puncture

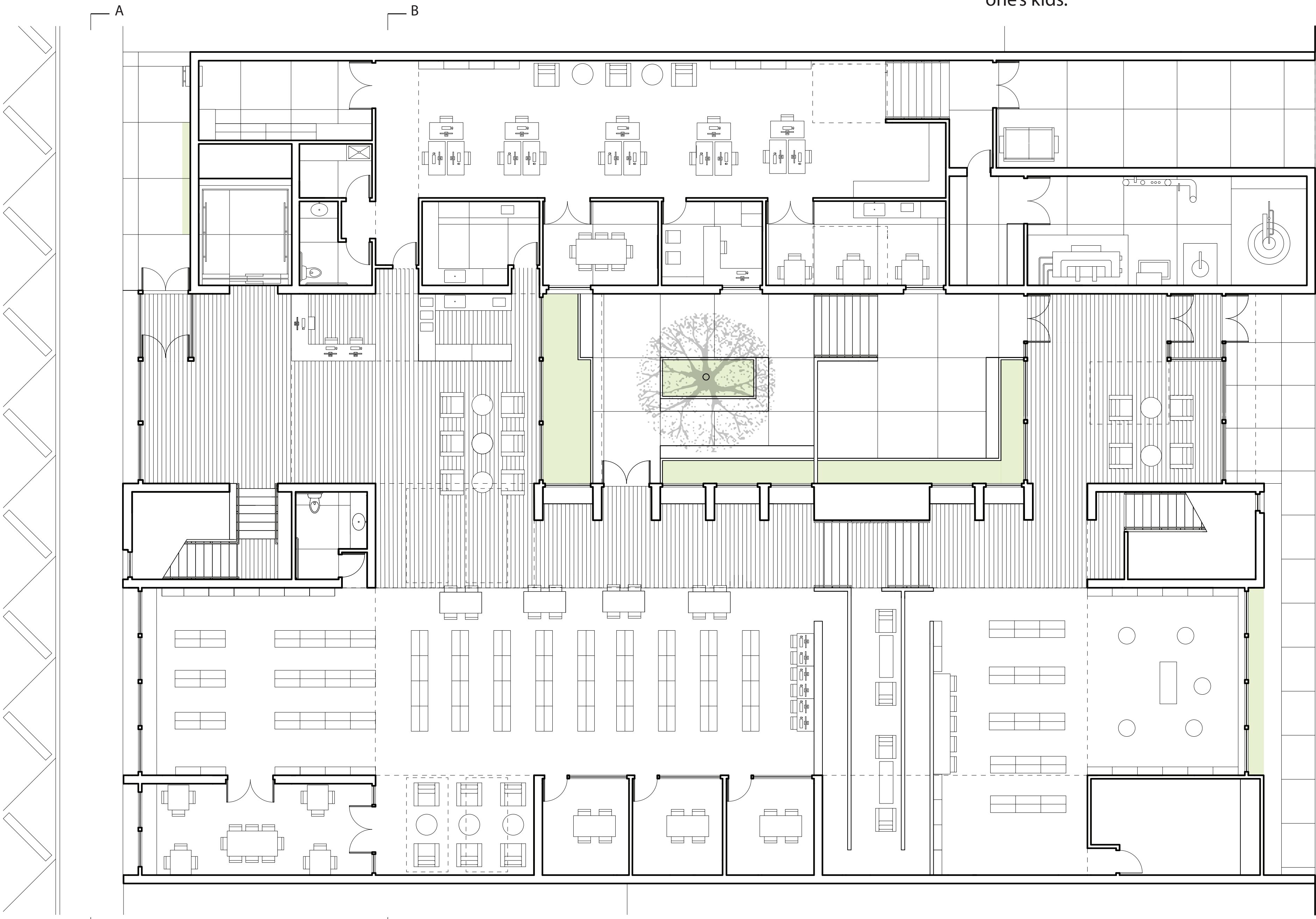
In alignment with the axes within the site, a series of double height spaces were punctured into the site to create connections to the floor below, provide natural light, and give a variety of spaces that release from the compressed/lower ceiling heights.



## 2nd Floor Plan 1/8" = 1'-0"

The floor plans reveal the relationship between the three solid bars and the porous spaces that reside in between them. Floor pattern reflects certain uses of each space such as wood indicating circulation, tile for exterior and supporting spaces, and carpet for main public spaces

The second floor is intended to provide a space for discovery, technology, fun activities/gaming, and a hideaway for teens with areas to overlook onto spaces below.



## 1st Floor Plan 1/8" = 1'-0"

The first floor's goal is to be a place of informal gathering at the cafe, business area, wandering through the serene courtyard and browsing books all while being able to keep an eye on one's kids.





West Entry/Cafe

The view to the entry space shows the relationship of the front desk, cafe, and courtyard as well as the ceiling heights that encourage areas of circulating along with the double height space.



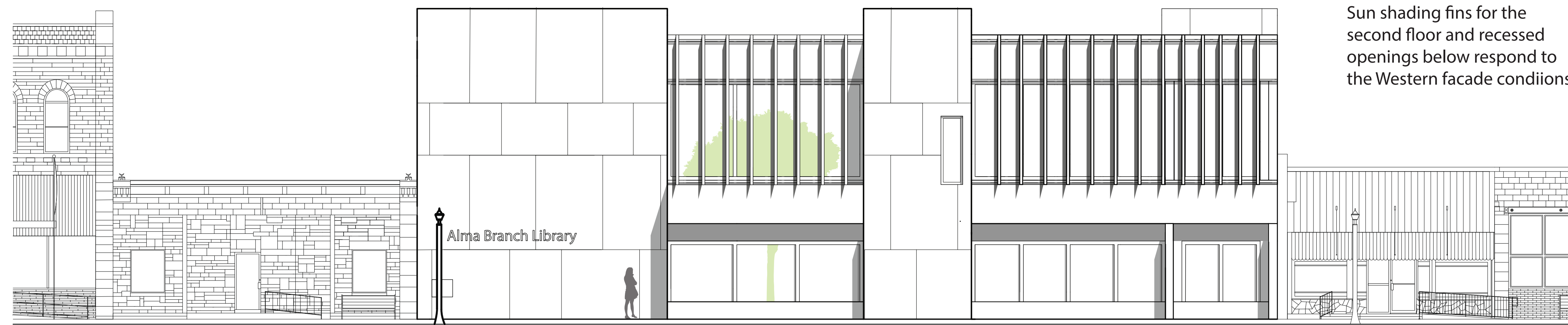
Children's Collections and Story Time

This view highlights the architectural language strategy of the solids on the sides of a porous space in between with the ceiling heights and punctured openings to the solids.



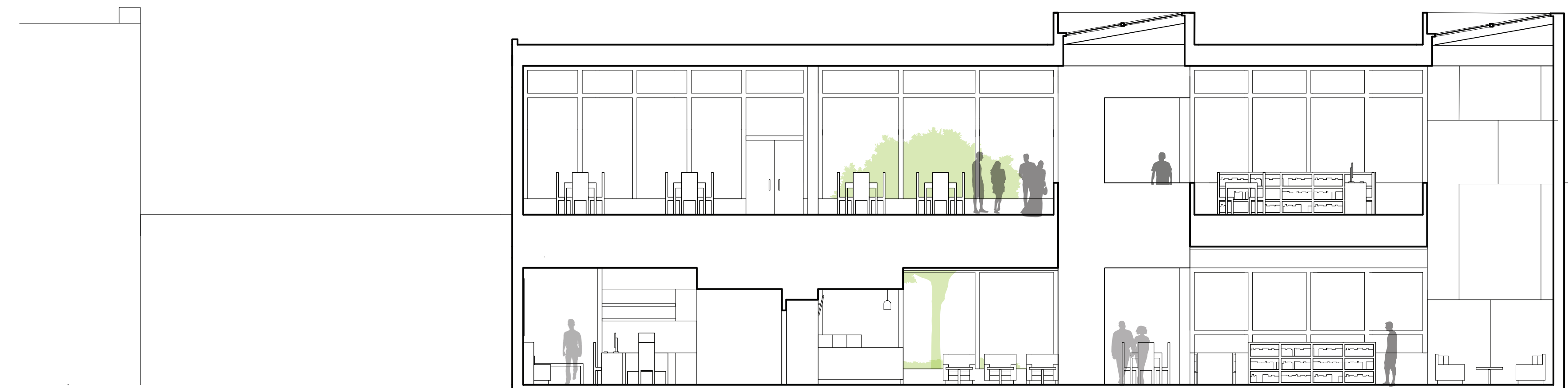
2nd Floor Maker Space and Teen Collections

Nooks along the circulation bar open up to the courtyard and integrate moments of rest. The distinction spatial uses are shown by floor patterns and ceiling heights.



Elevation A - A 1/8" = 1'-0"

Sun shading fins for the second floor and recessed openings below respond to the Western facade conditions



Section B - B 1/8" = 1'-0"

The double height "punctures" with skylights create moment of release and natural light.

Various solids blocks along the "solid bars" rise above the rest of the roof height, indicating areas where there is vertical continuity.



Section C - C 1/4" = 1'-0"

The reading nooks along the courtyard create repetition along the path of circulation.