

ALMA LIBRARY FOR GROWTH
ADS 2 — Spring 2022
Schwartz Studio — Rosemary Summers

A Library can provide many different forms of growth, and the Alma Public Library includes more than a few. Figurative references and actual forms of growth occurs, immediately upon approach to even a private study room. Visitors will be surrounded by experiences and spaces which promote natural life, like plants and trees, and natural growth in themselves. Libraries are sources of knowledge and encourage community, and this design is intended to continue that purpose.

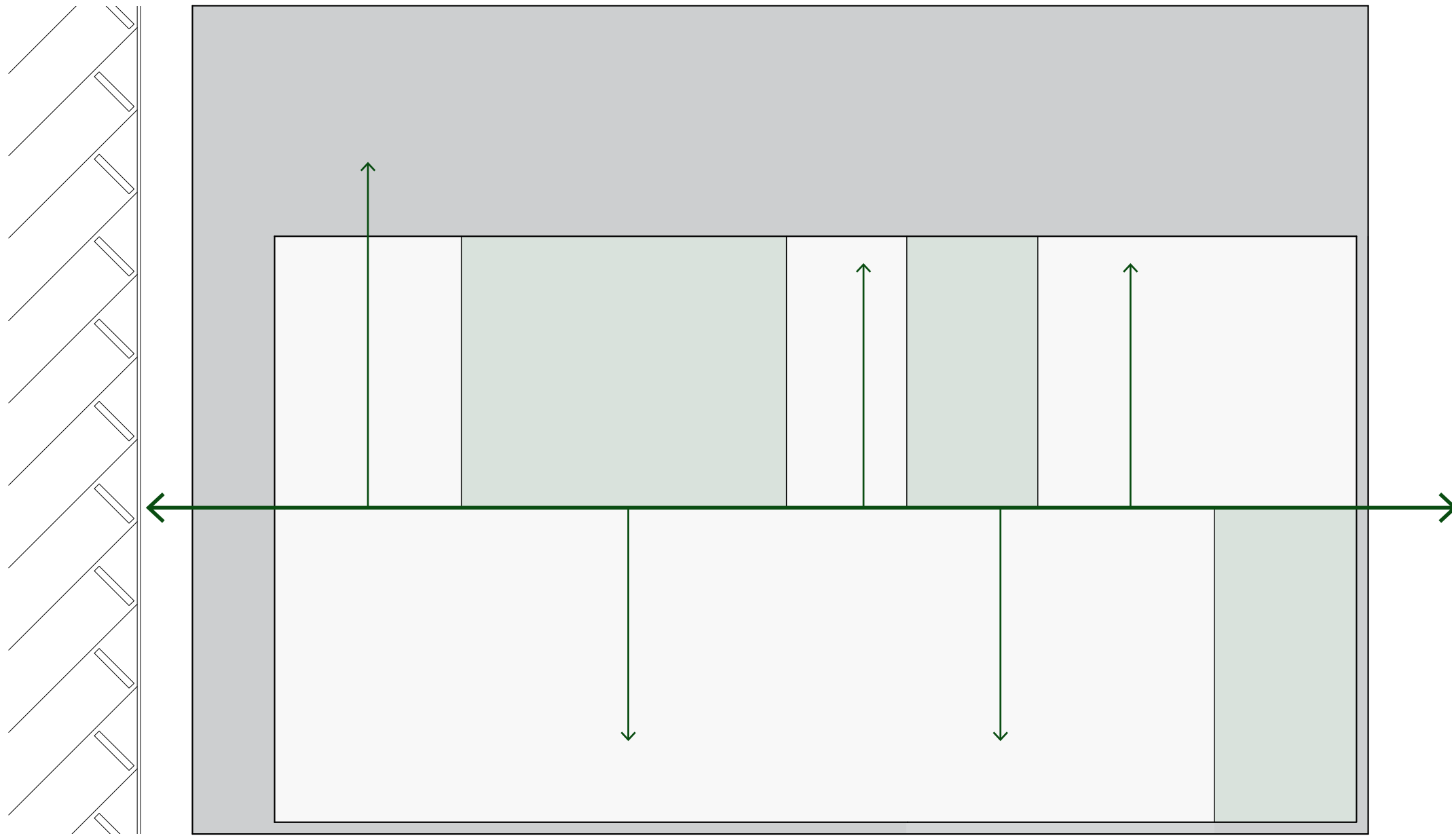
Elevation



The tree of the main courtyard is visible from the street, but only slightly. This is meant to draw visitors into the library.

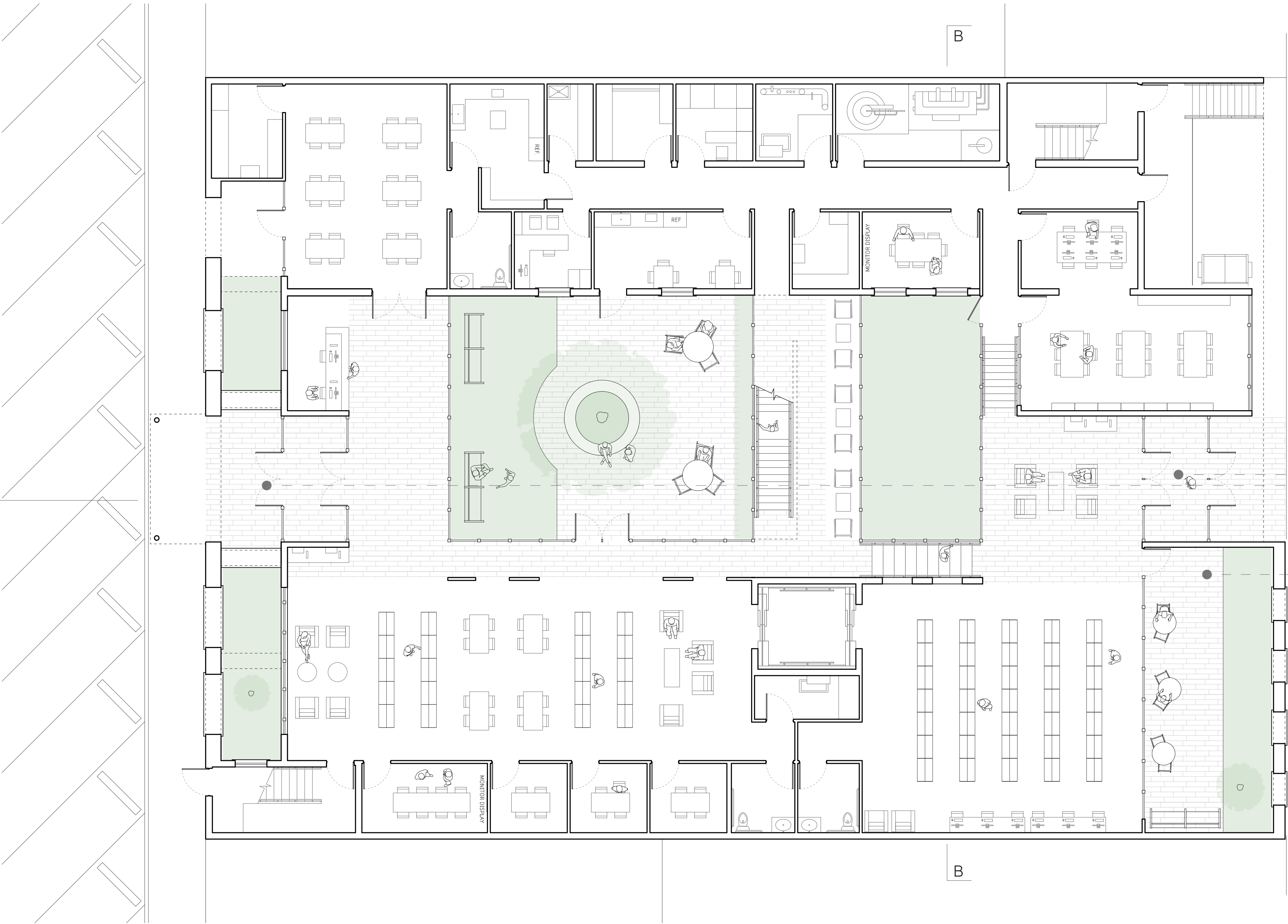
Tree-like columns are used to support the overhang. As a visitor arrives, this will be the first growth reference, and then the tree and greenery show themselves after and through the entrance sequence.

Scale: 1/8" = 1'-0"



Parti The site is **wrapped** by a heavy enclosure and **punctured** with courtyards, along which the visitor travels and can **branch** off deeper into the library.

First Floor Plan



This green space is visible from arrival, but the masonry wall protects the garden roof and spaces behind it, while punched openings remain free of glass and allow the greenery to grow as it likes.

The large tree aids to the theme of growth, but growth needs protection, and its large crown is used as shading during harsh summers for the glass courtyards.

Multiple layers are involved to enter, meant to extend the threshold and the visitor's initial experience.

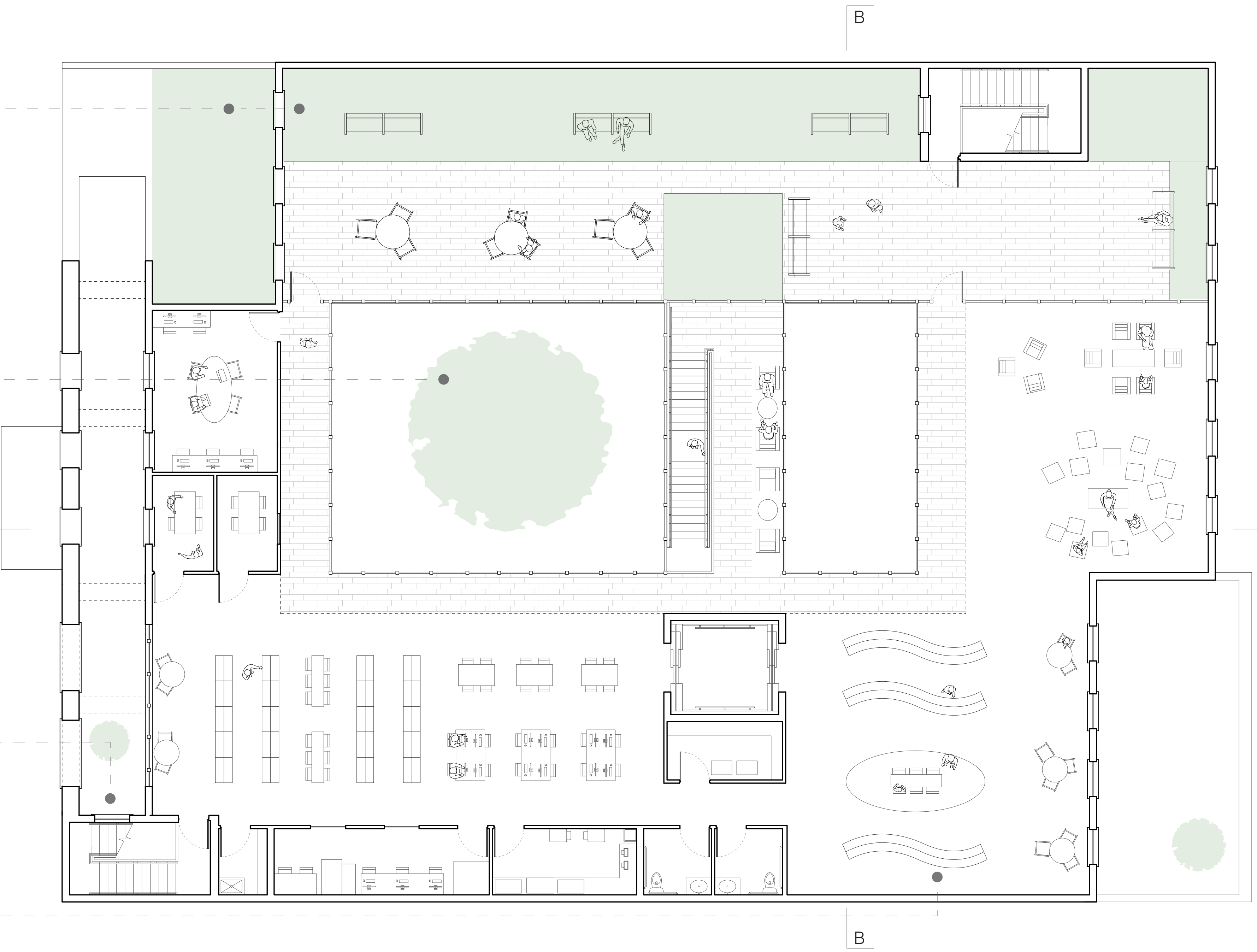
All spaces can be used by all visitors, but this outdoor space is only accessible from the adult collection and is completely enclosed, giving the collection a very private green space.

The tree that lives in the threshold has many opportunities to be seen. Upon arrival, from the interior of both Adult and Teen spaces, but also from the fire stair. This detail allows the fire stair, a strict programmatic necessity, to be integrated and actively participate in the threshold.

The children's bookshelves begin to reflect their ceiling condition, highlighted in both sections.

Scale: 1/8" = 1'-0"

Second Floor Plan



Scale: 1/8" = 1'-0"

Operational Diagram

The project allows a total of 14,048 sq ft for built space. This is how that amount fits on the site with **context** to adjacent sites and their builds.

The initial mass is **split** into three bars, the width of these are similar to the other buildings along the street. These bars are used for different functions of program, but then also keep an internal proportion to the visitor traveling from along the street into the library.

The site requires 30% of it to be open, so two internal courtyards and two exterior courtyards are **carved** primarily out of the middle bar. This bar will hold the entrances and other circulatory spaces between the courtyards which bridge the two bars at the site's North and South edge.

To supply a necessary exterior children's play area, and to compliment the internal courtyards, the North bar **compresses** to house an entire floor of garden space. This garden overlooks the interior courtyards, and is accessed through the East and West bridge, making visual or direct connections to any public space from it.

A screen wall is made of thick masonry and holds the street edge before the entrance. This is used for shading the facades, but primarily intended to extend the threshold upon entering. A visitor would **experience** multiple layers of heavy and enclosed spaces before completing their entrance. This wall is extended to enclose other outdoor spaces on the East and West faces.



Section B

The Entrance

The screen wall is partially used as a shading screen for the West facade, but really it extends the threshold and encloses the visitor as they experience a multi-layered entrance sequence. The green space is immediately introduced as a major theme of this library as it flows over the entrance of the multipurpose space. The wide cast stone which surrounds the openings can double as seating, as visitors and passer-bys notice the library and the foliage, and even the tree, all contained between the screen wall and the entrance.



Teen Stacks and Space

The teens space is located directly above the adult's collection. Their study rooms and stacks wrap the south and west side of the building, and have direct access to the roof garden space. As they are disconnected from the adult's and children's collections and have their own outdoor space, it will promote the independant and relaxing experience teens want and need for their growth.



Courtyard and Adult Collection

Directly upon entrance the first courtyard is visible. It was visible from the street, but through the multilayer entrance, some of it's experience was guarded until now. This area is accesible along the adult space, which is adjacent to the lobby at the main entrance. This give adults a more private and quiet experience integral to all libraries. As this is a courtyard claimed by the whole library situated in the middle of the site, the adult collections has a second, more private outdoor space located at the east side of the building.



The Roof Garden

This view is from the North West corner of the roof-garden space. It runs the length of the building to connect the far sides of the library. The heavy enclosure of the masonly screen wall on each end is juxtaposed by the openness provided by the courtyards and roof. Light is able to filter through to all spaces, but the interior remains shaded by the heavy walls and trees.



Children's Activities

The ceiling wooden condition which is present in all collections is celebrated most in the children's area. From this view, the curves open periodically to show an interprative sky of clouds. The wood then curves down the wall next to the reading space, grounding it and giving it roots. This whole experience is to signify the growth that takes place in libraries, and how important it is for children, and all visitors, to take advantage of libraries and the multiple types of growing they provide.



Section A

As the wood comes down to join the floor, intending to resemble a tree trunk, the option for multiple types of lighting or other fixtures to further emphasize the space can be looked into. In this case, to keep to the theme of growth, and reference to trees throughout this branch library, a lighting fixture resembling the canopy of a forest is integrated. The experience is meant to remind the children of sitting under a tree, as light filters through the leaves, and the clouds are further above them.