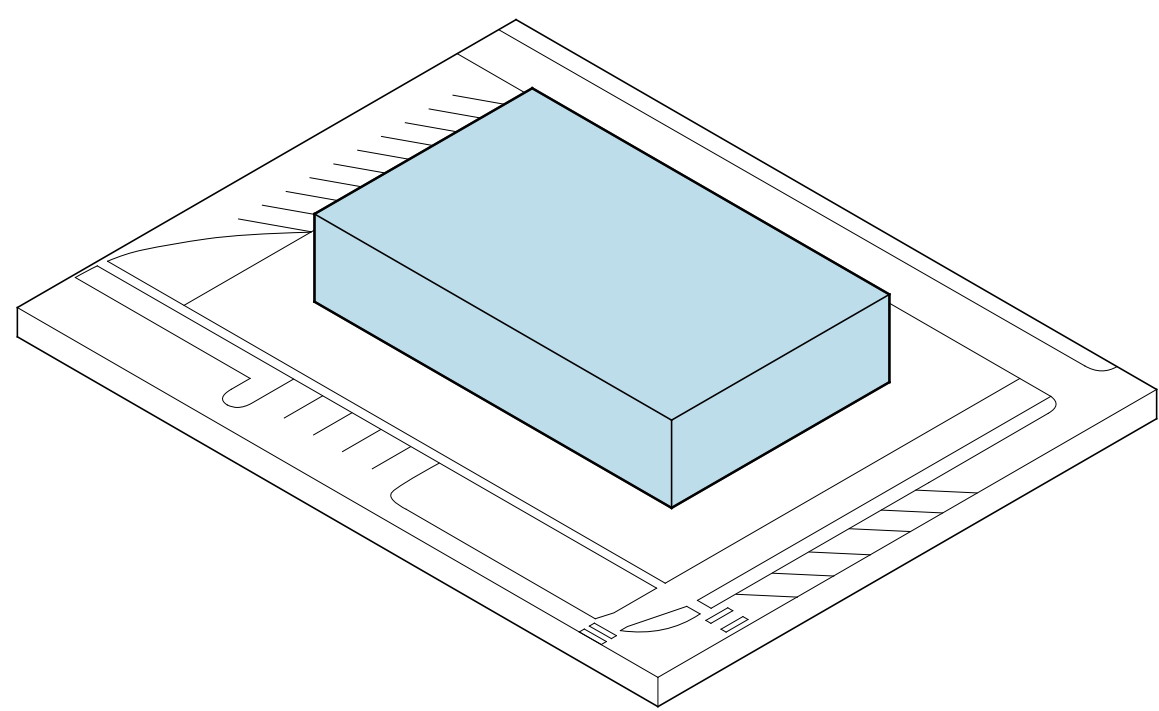
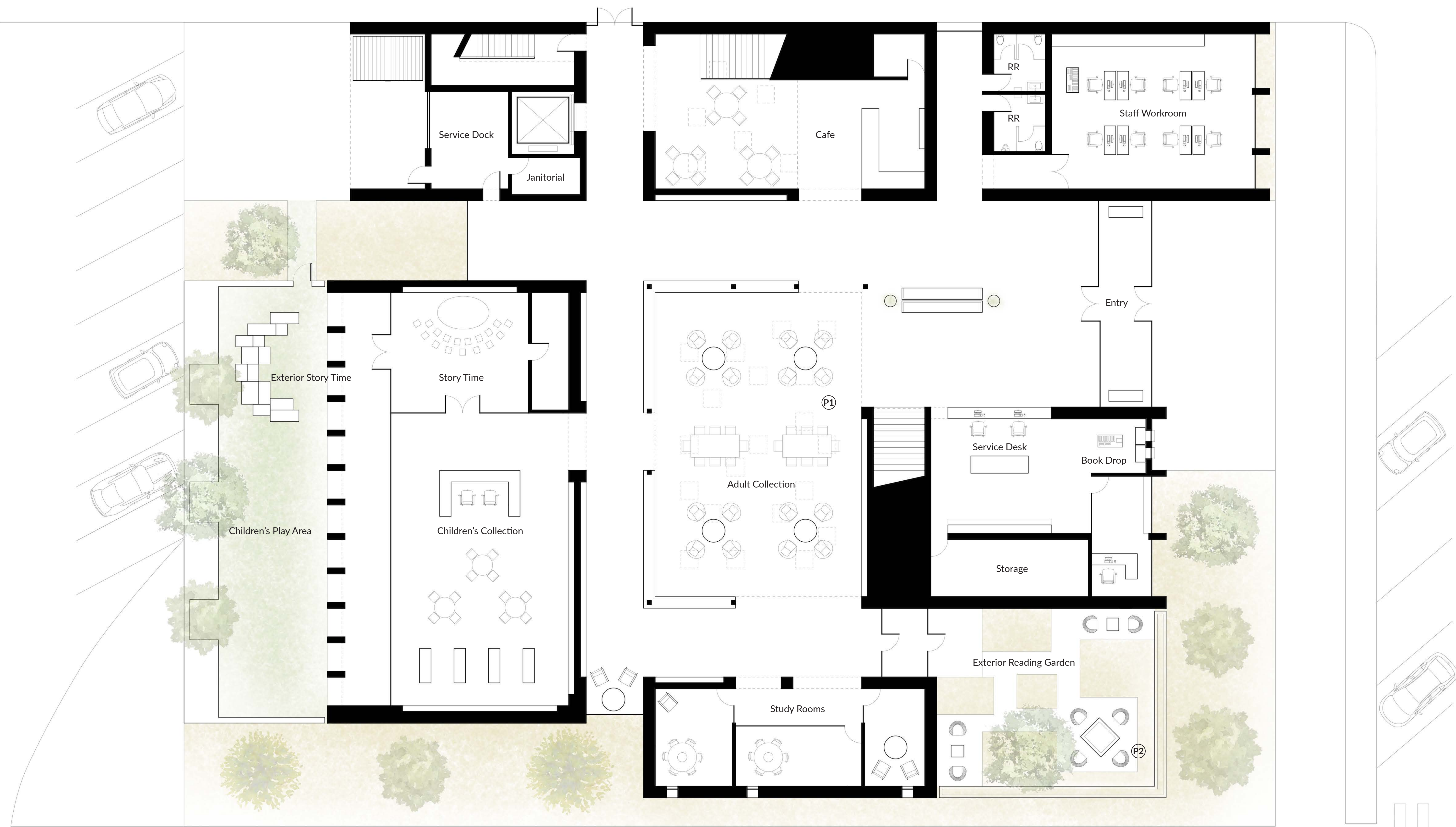
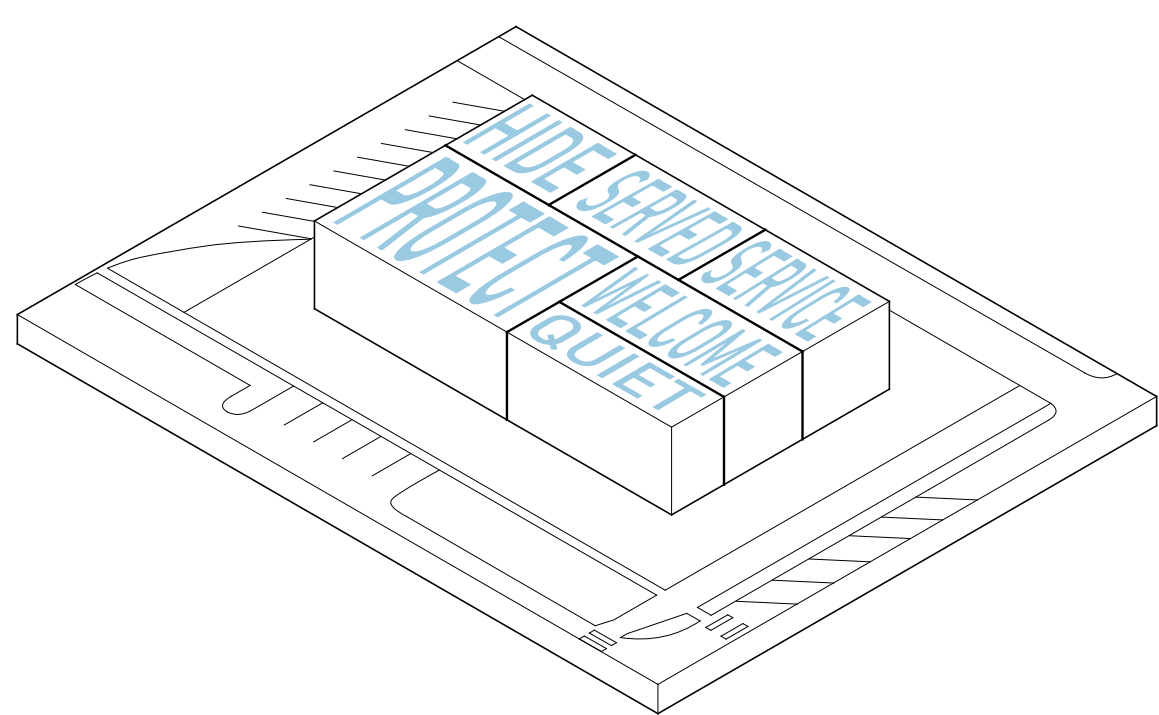


# COUNCIL GROVE PUBLIC LIBRARY

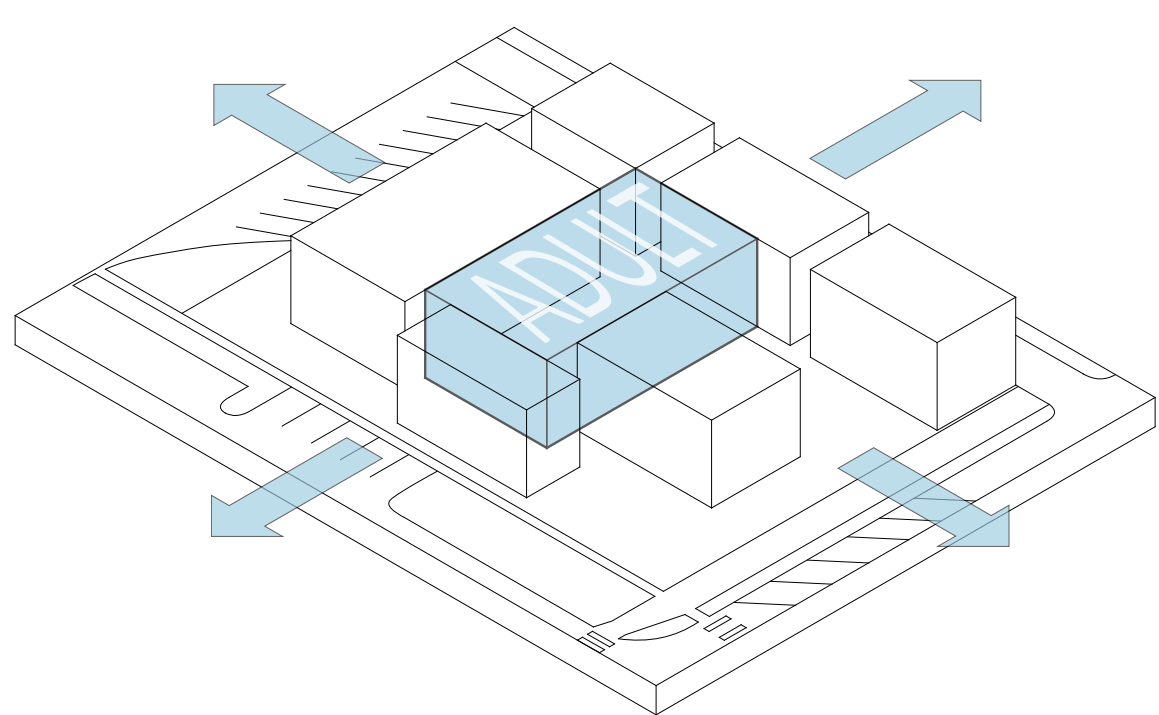
PROF. SCHWARTZ    SPRING 2023    ETHAN EDINGTON



**MASSING**  
A mass appropriate to the program scale of the library is placed on the center of the site.



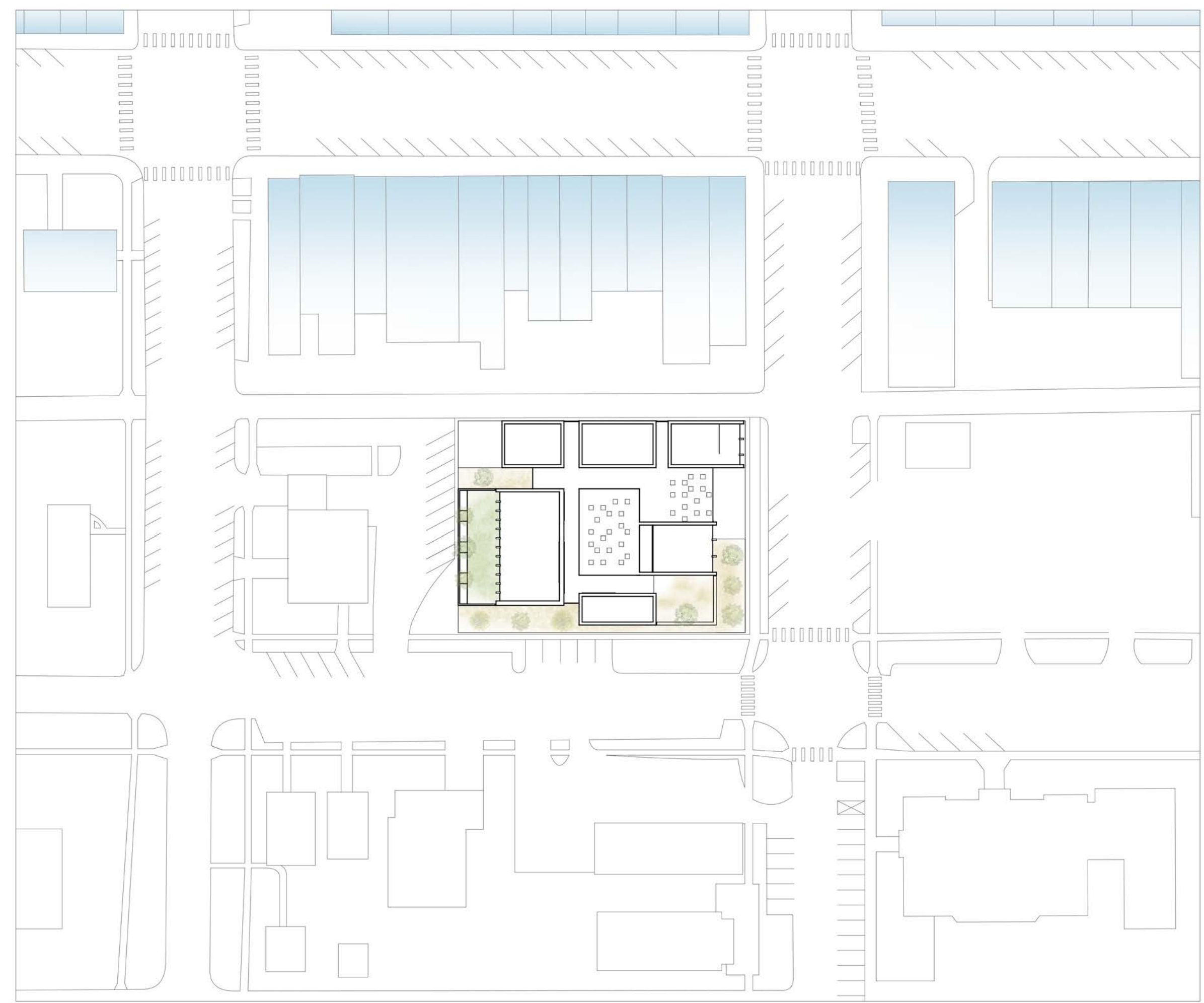
**DIVISION**  
Separate the massing into sections with programming. Each mass is provided a notion for placement on site.



**INTEGRATE**  
The masses are pulled apart, unified with the adult collections created in the negative space.

## CONTEXTUAL INFLUENCES

Many buildings that rest on Council Grove's main street have materiality such as brick and limestone that feel very dense. Some more dense than they actually might be. The idea of heaviness was taken advantage of and developed further. The result is a language of walls and building envelopes with exaggerated thickness in order to create an overall stereotomic library.



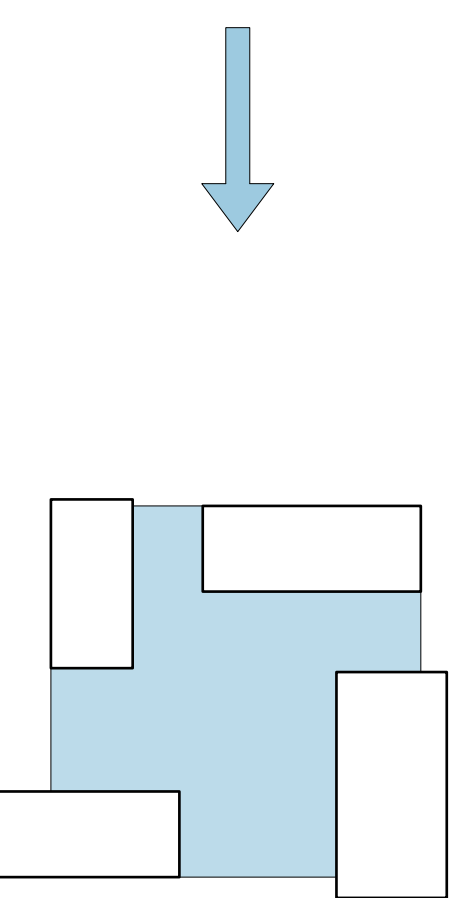
SITE PLAN

0 40 80 160 320



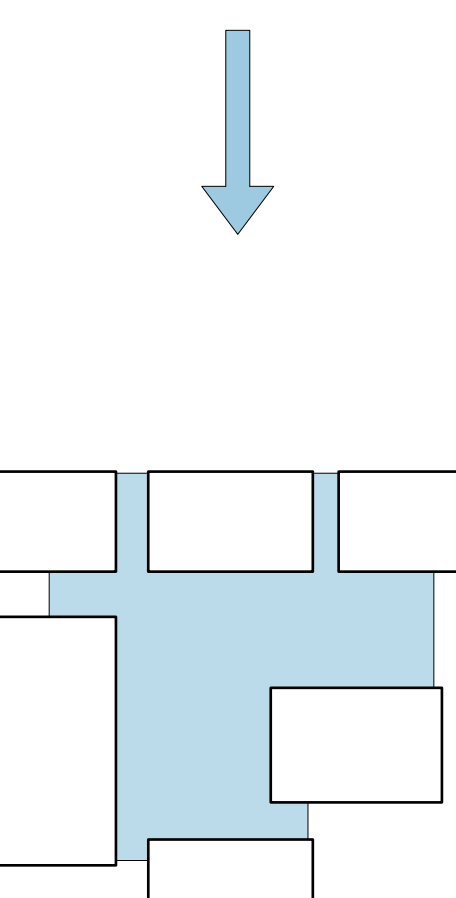
## PRECEDENT

The Therme Vals by Peter Zumthor



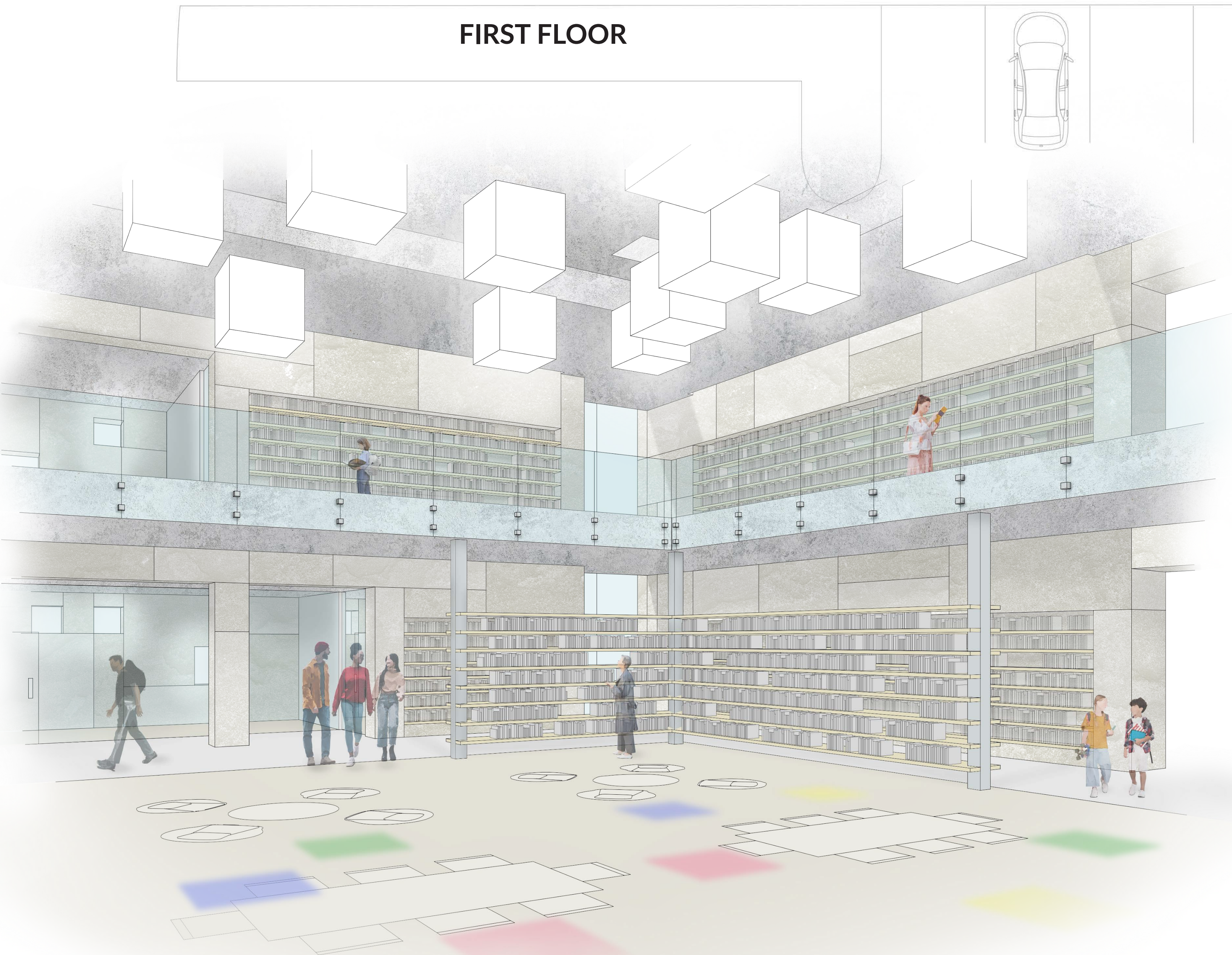
## CONCEPTUALIZE

Peter used masses in order to subdivide a larger space. This creates space within a space and natural circulation flowing around and inside each mass.



## APPLY

Using this same strategy, the six masses are formed with the intent of using the negative space for circulation and a main central hub.



P1

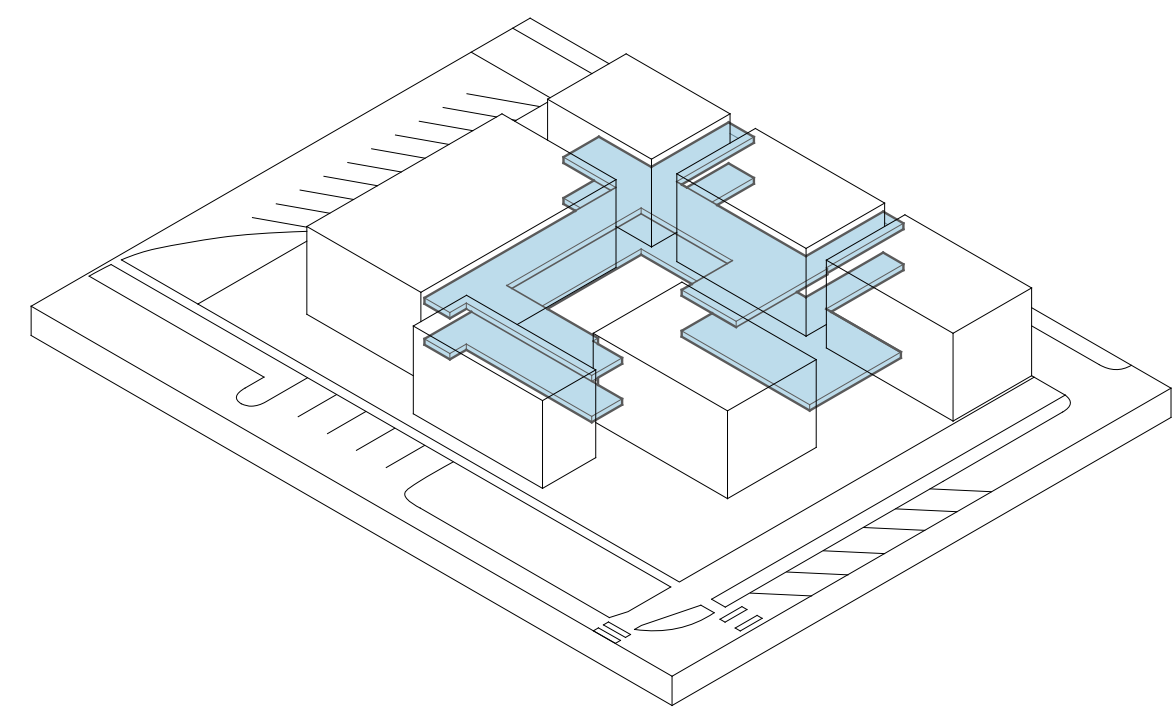
VIEW OF ADULT COLLECTIONS



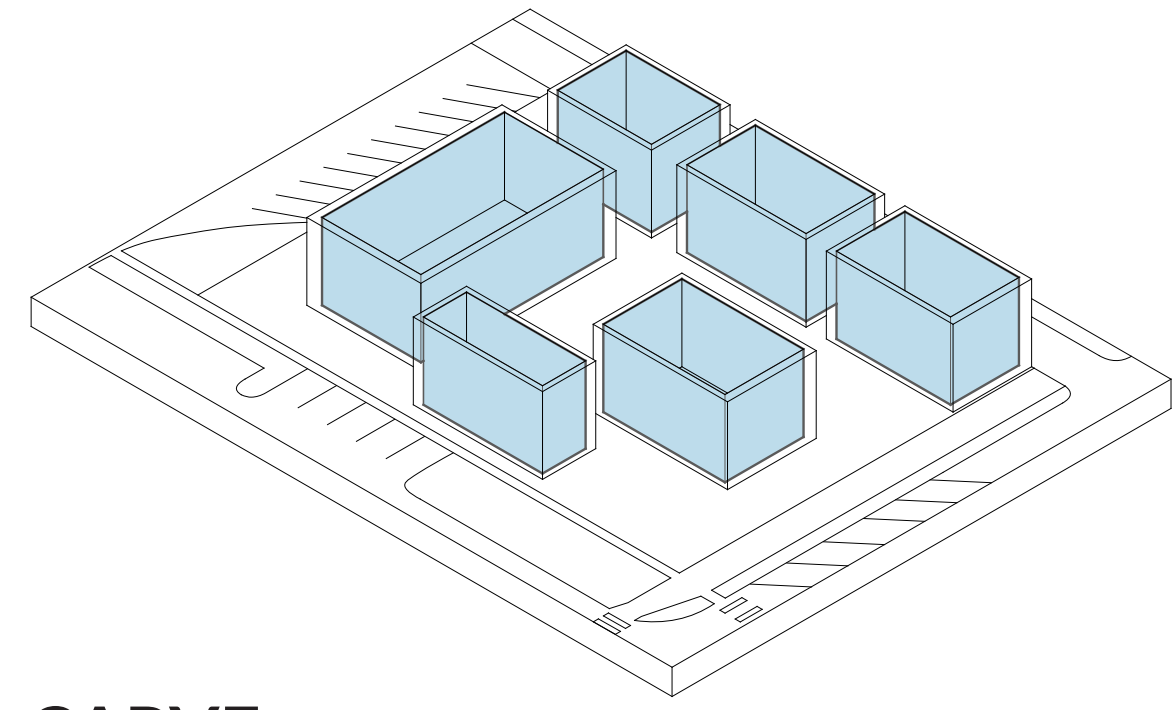
P2

VIEW FROM EXTERIOR READING GARDEN

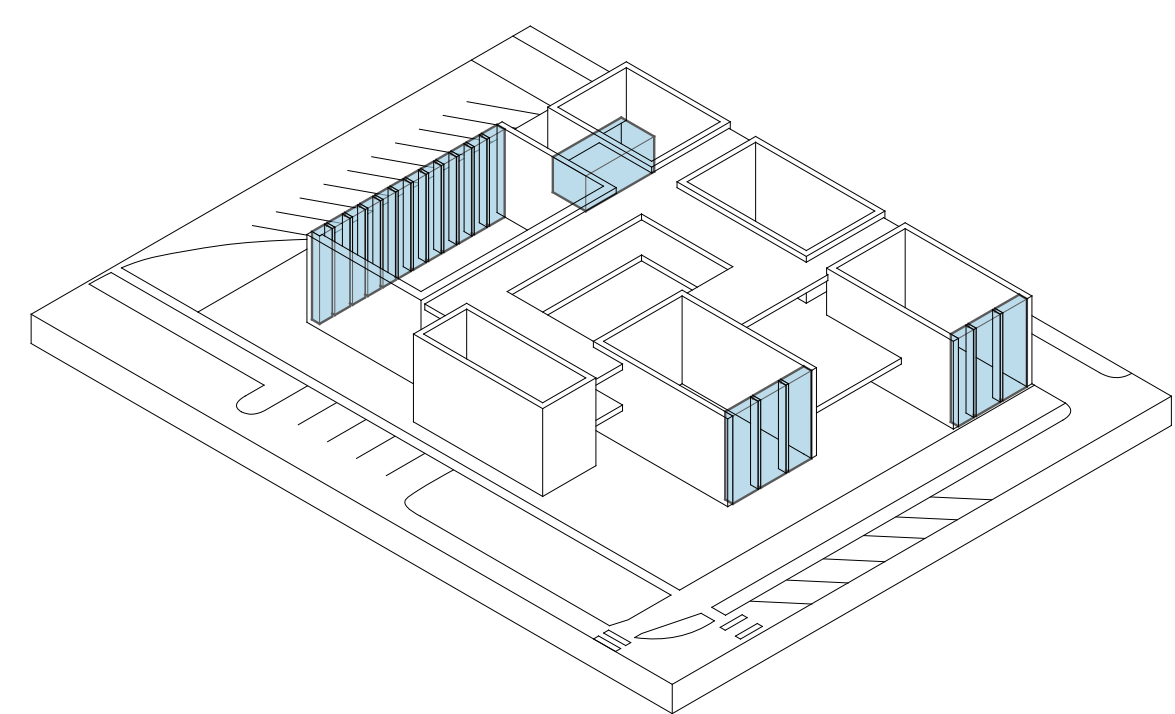




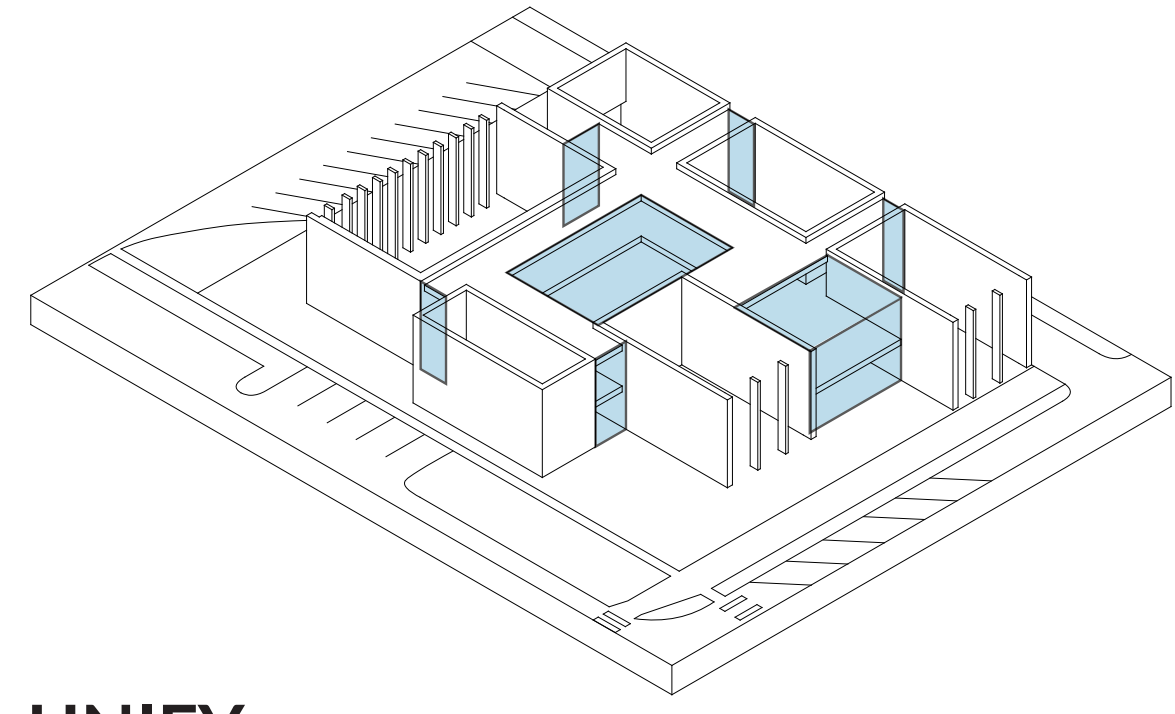
**LINK**  
Now that the masses are established in location, they are connected with the circulation fabric of the floor and roof.



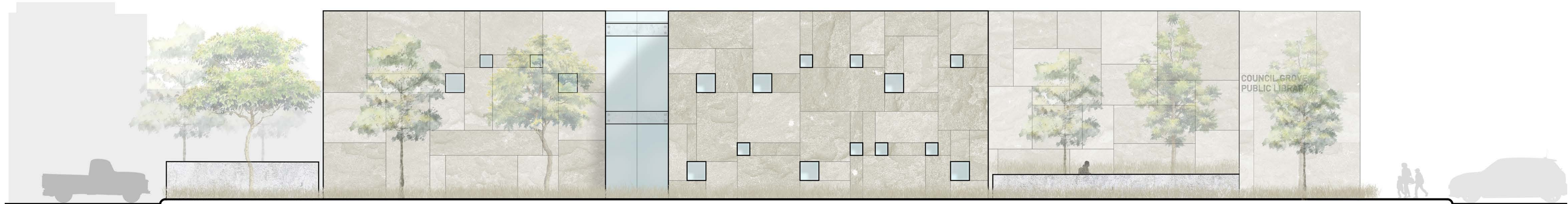
**CARVE**  
Establish the building envelope of each mass.



**DEFINE**  
Further carve out certain envelopes to create vertical fins and access into the back of house service area.



**UNIFY**  
To fully connect each envelope, vertical glazing and overhead conditions are created.



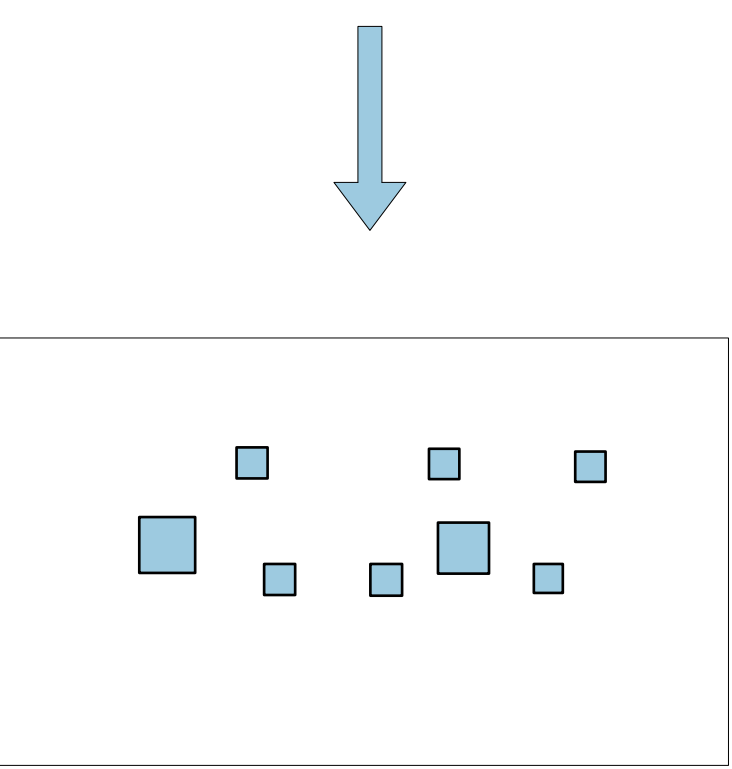
**SOUTH ELEVATION**



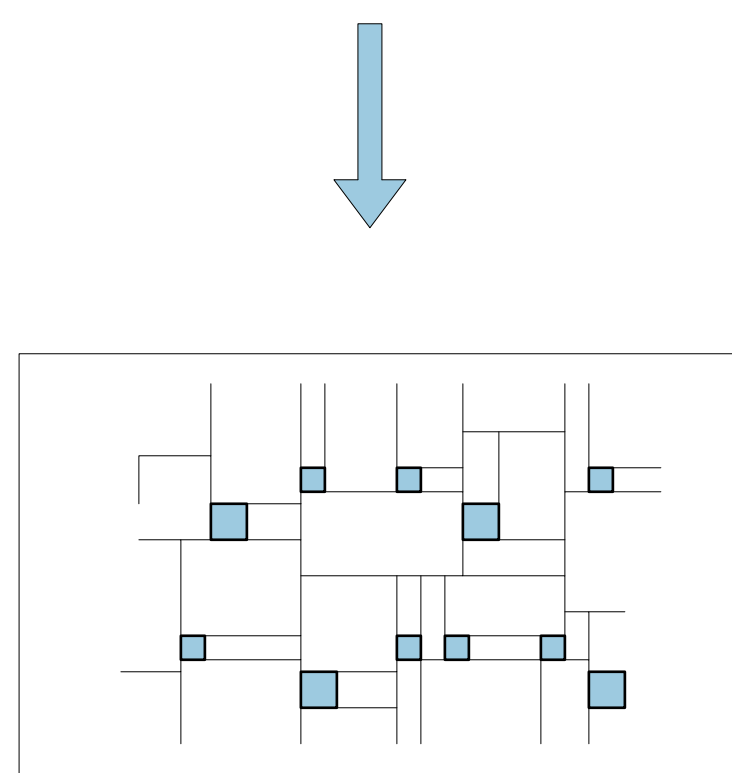
**EAST ELEVATION**



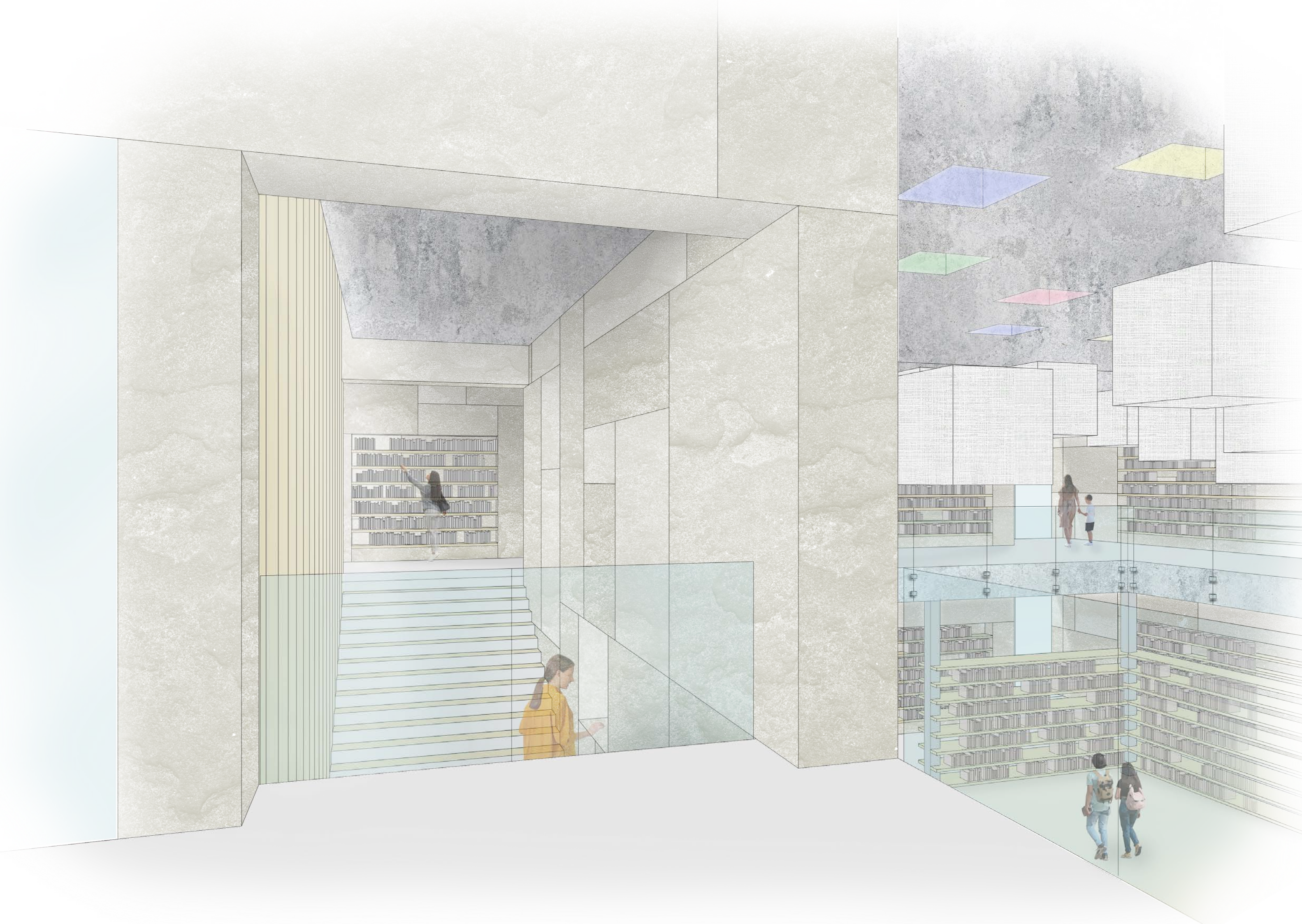
**PRECEDENT**  
Capsule Hotel in a Rural Library by Atelier Tao+C



**CONCEPTUALIZE**  
The punched openings in this project by Atelier are for letting light in specific interior spaces only where it is needed, giving the exterior a seemingly random organization while also letting the interior be expressed to the exterior.

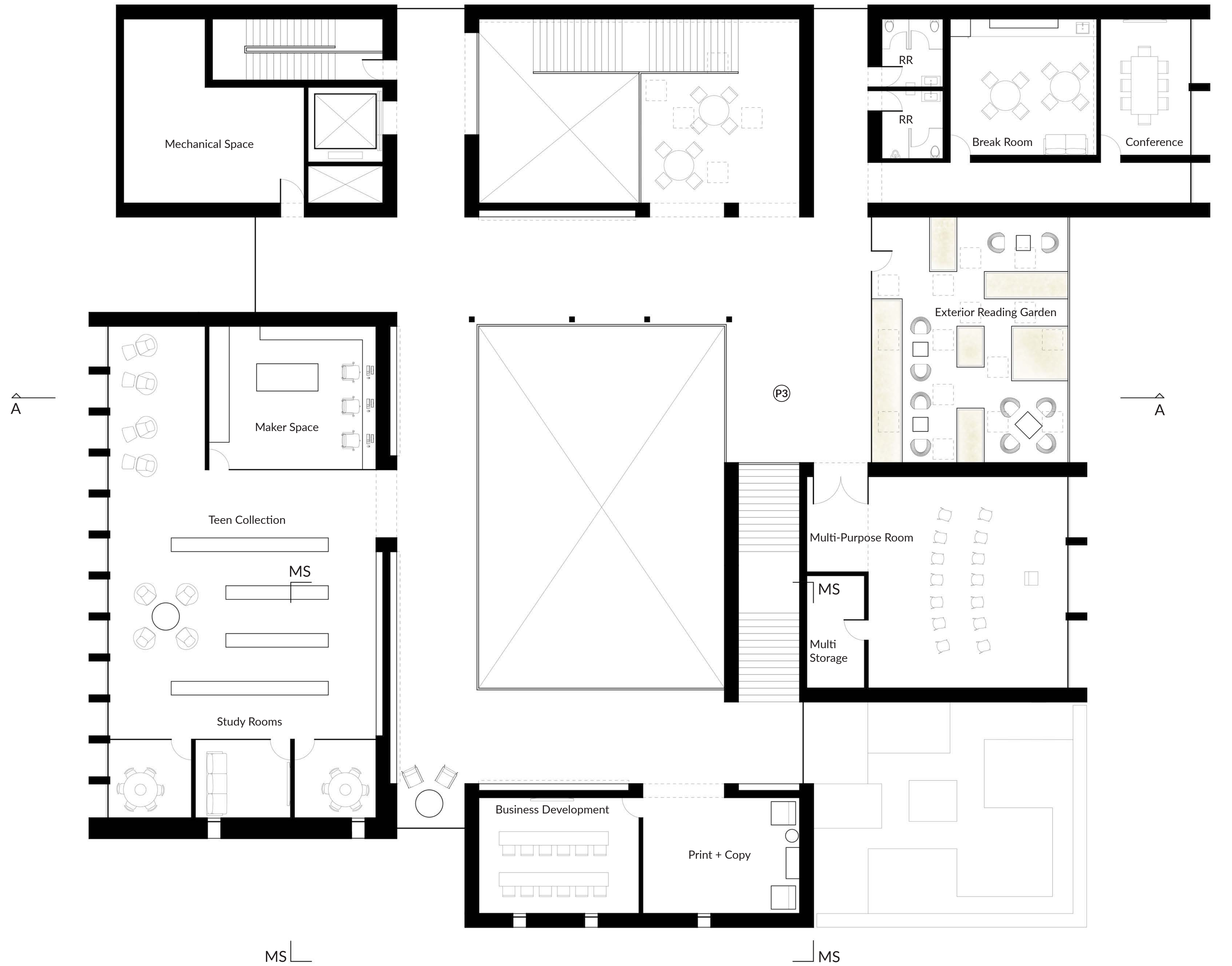


**APPLY**  
Providing light strategically with carvings and allowing a language of false random organization to carry past the walls of my library and also into the horizontal planes proved to be very effective. The openings also created a language for the stone, which wraps in bold masses around each opening, remaining unbothered rather than cut into.

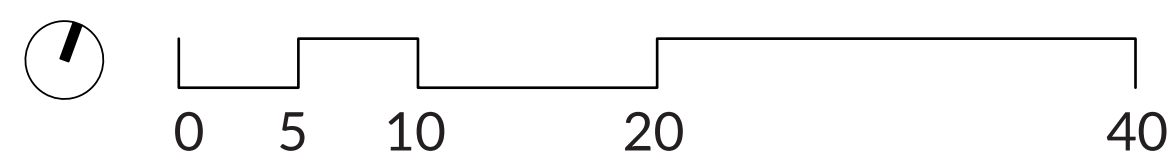


**P3**

**VIEW OVER MAIN STAIR**



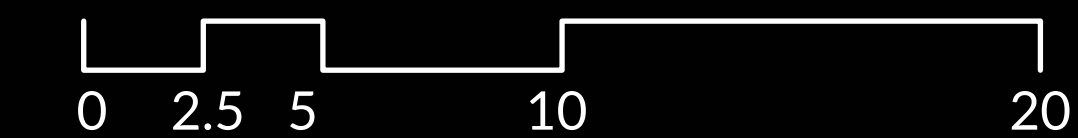
**SECOND FLOOR**



The concept of carving and mass is further extended to the children's area creating a play-den that lives along the back wall. An outdoor story time is also created with extrusions of mass for seating.



**SECTION A-A**



Punched openings in each envelope create circulation paths, storage for books, and pathways for light emphasizing a concept of carving. This sign carries the idea even further, creating ubiquity even down to the details.