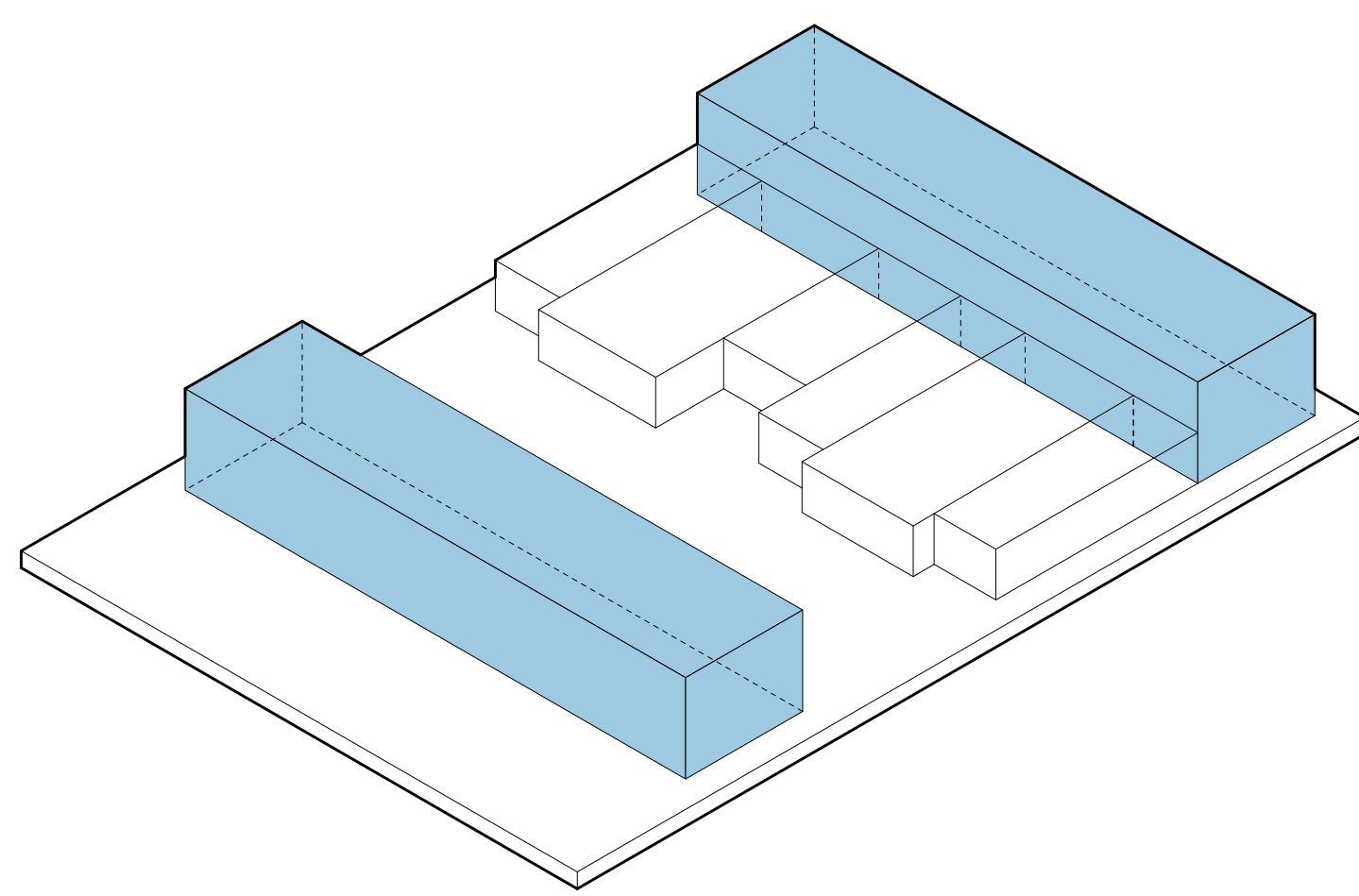
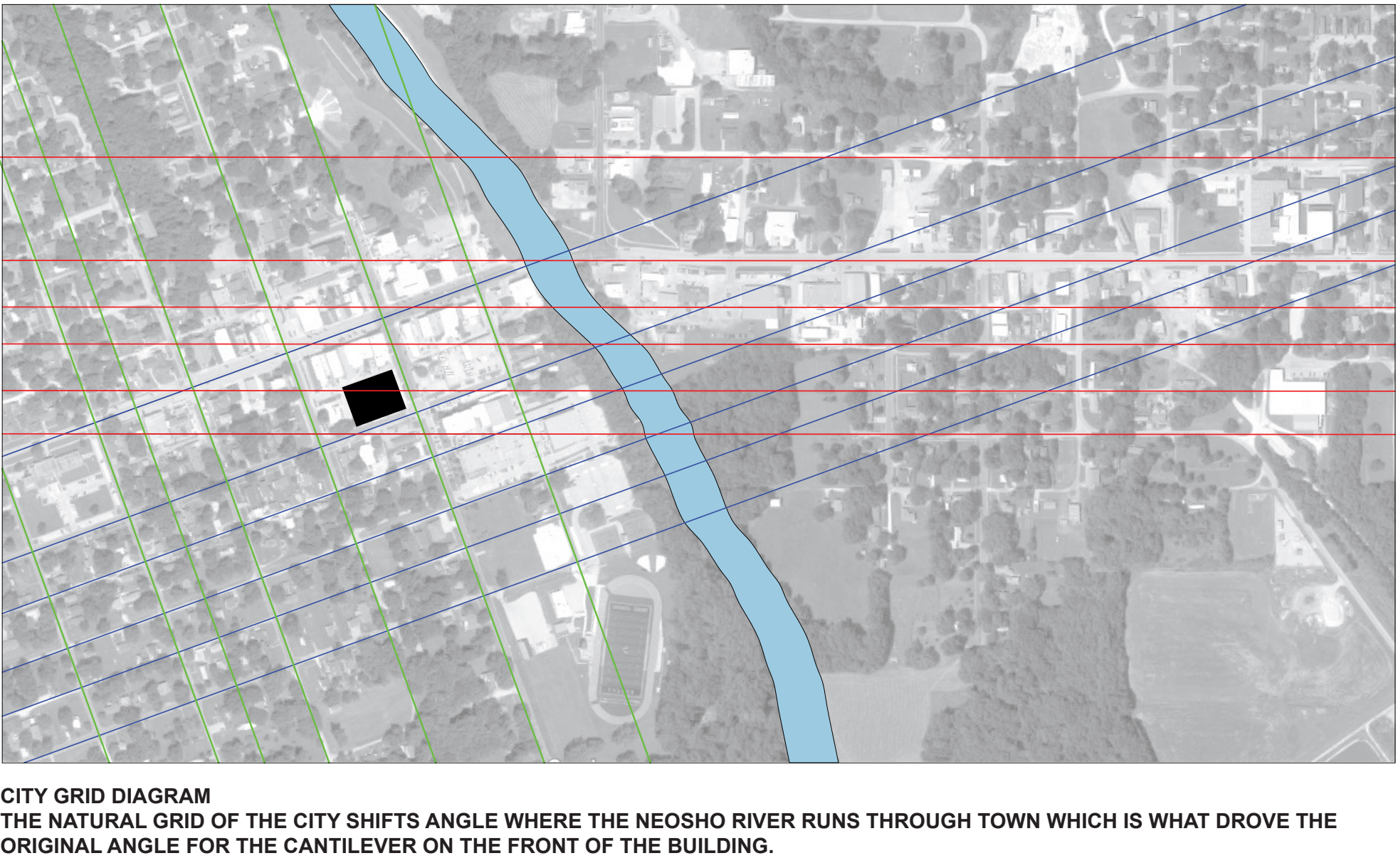
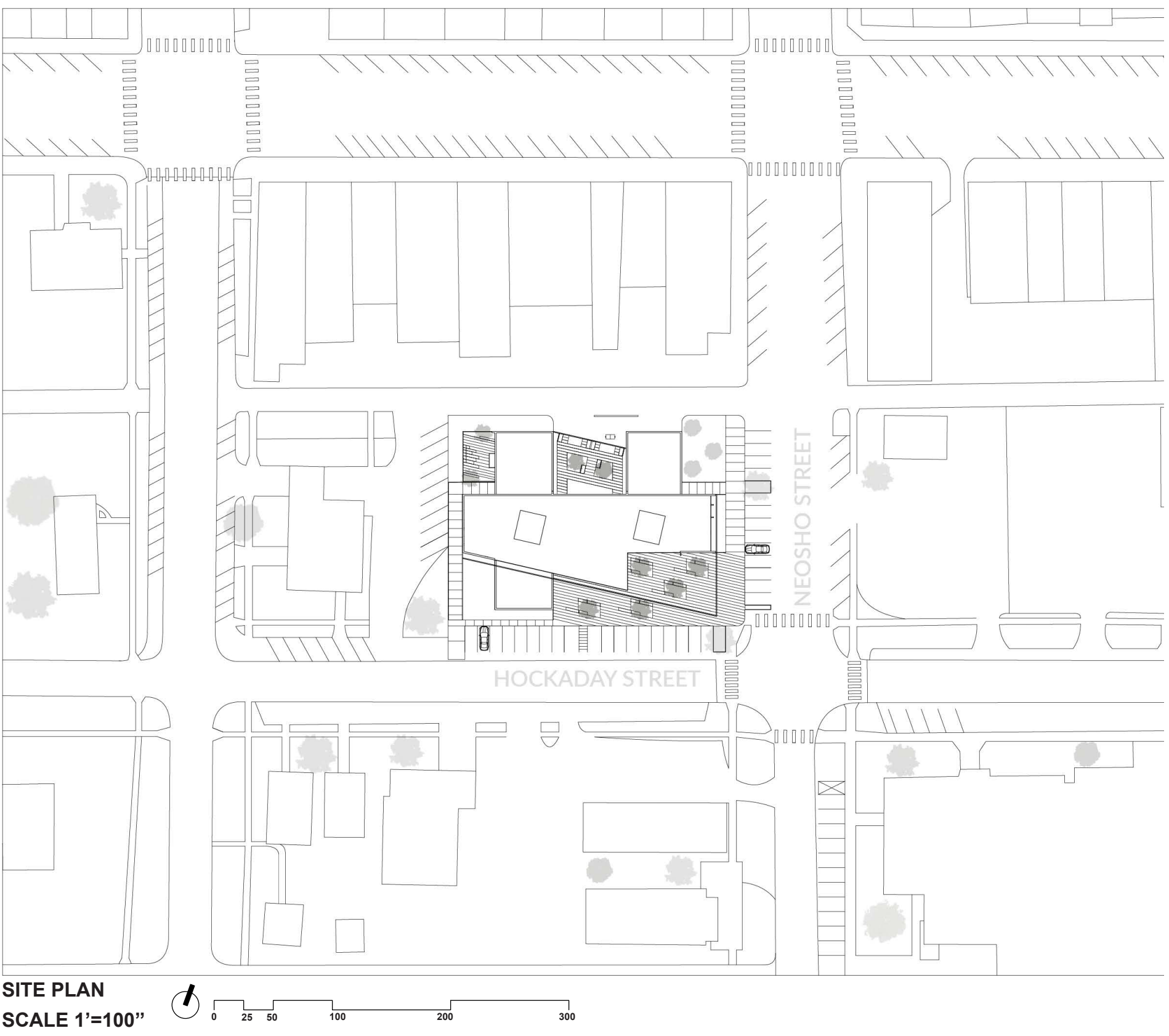
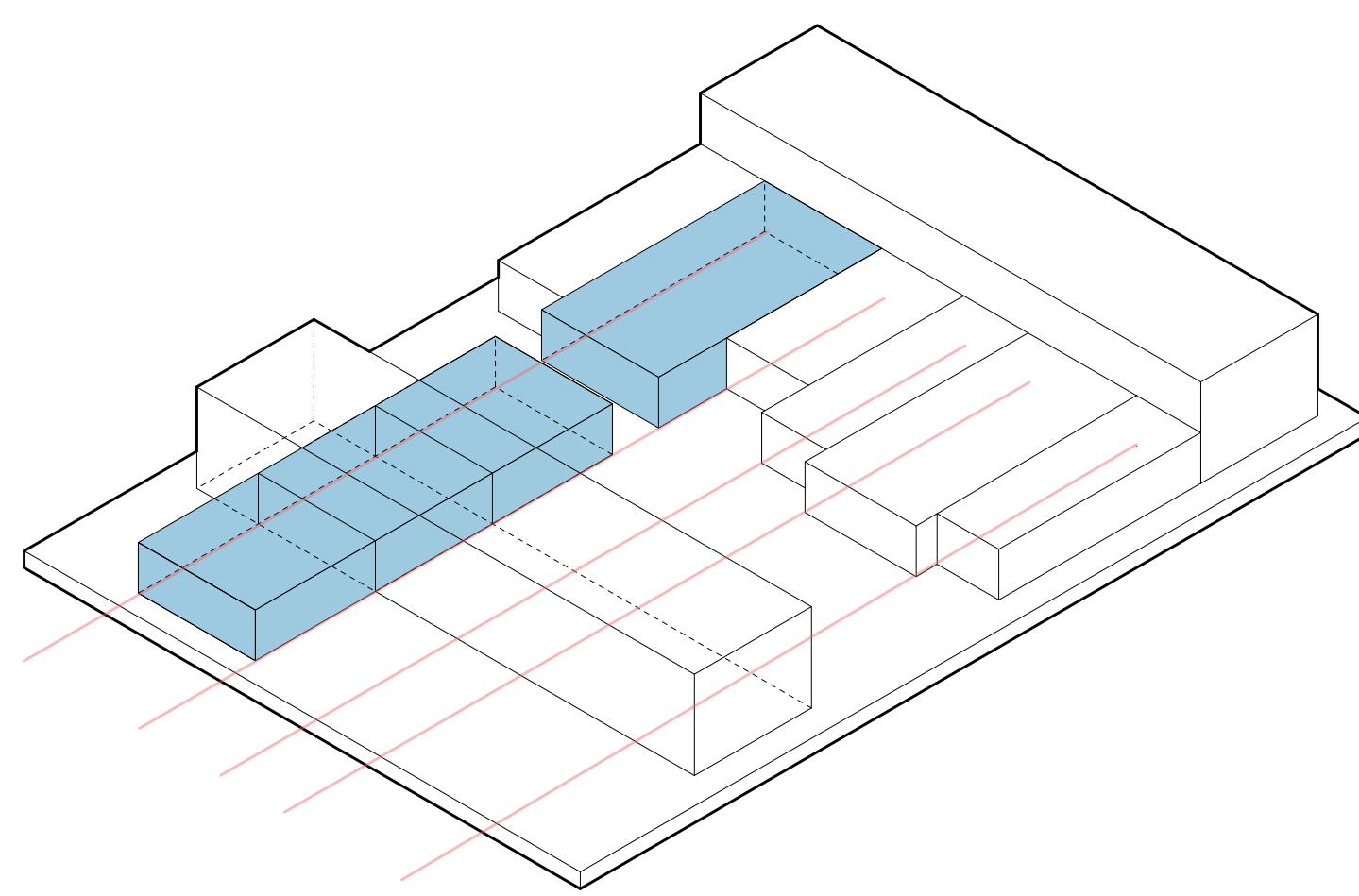




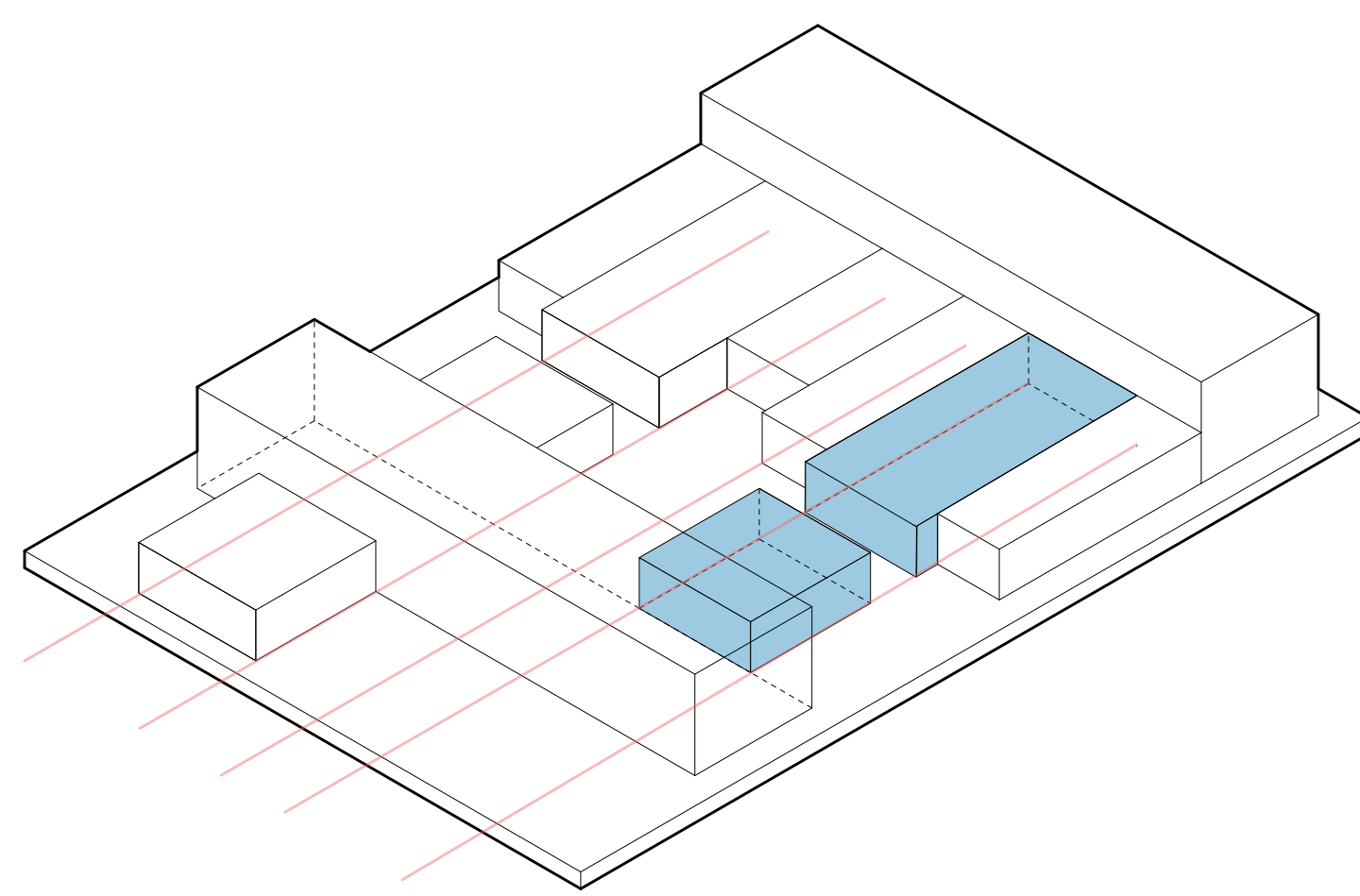
THE CONCEPT FOR THIS DESIGN WAS BASED OFF THE IDEA OF CONNECTION, THE BUILDINGS FORMALITY WAS BASED OFF OF THE CONNECTION BETWEEN THE BUILDING AND MAINSTREET, THEN AN IDEA OF CONNECTION BETWEEN THE BUILDING AND THE COMMUNITY WAS INCORPORATED TO ADD THIS CANTILEVER TO PROVIDE A SHELTERED PLAZA FOR THE COMMUNITY TO HOST EVENTS IN.



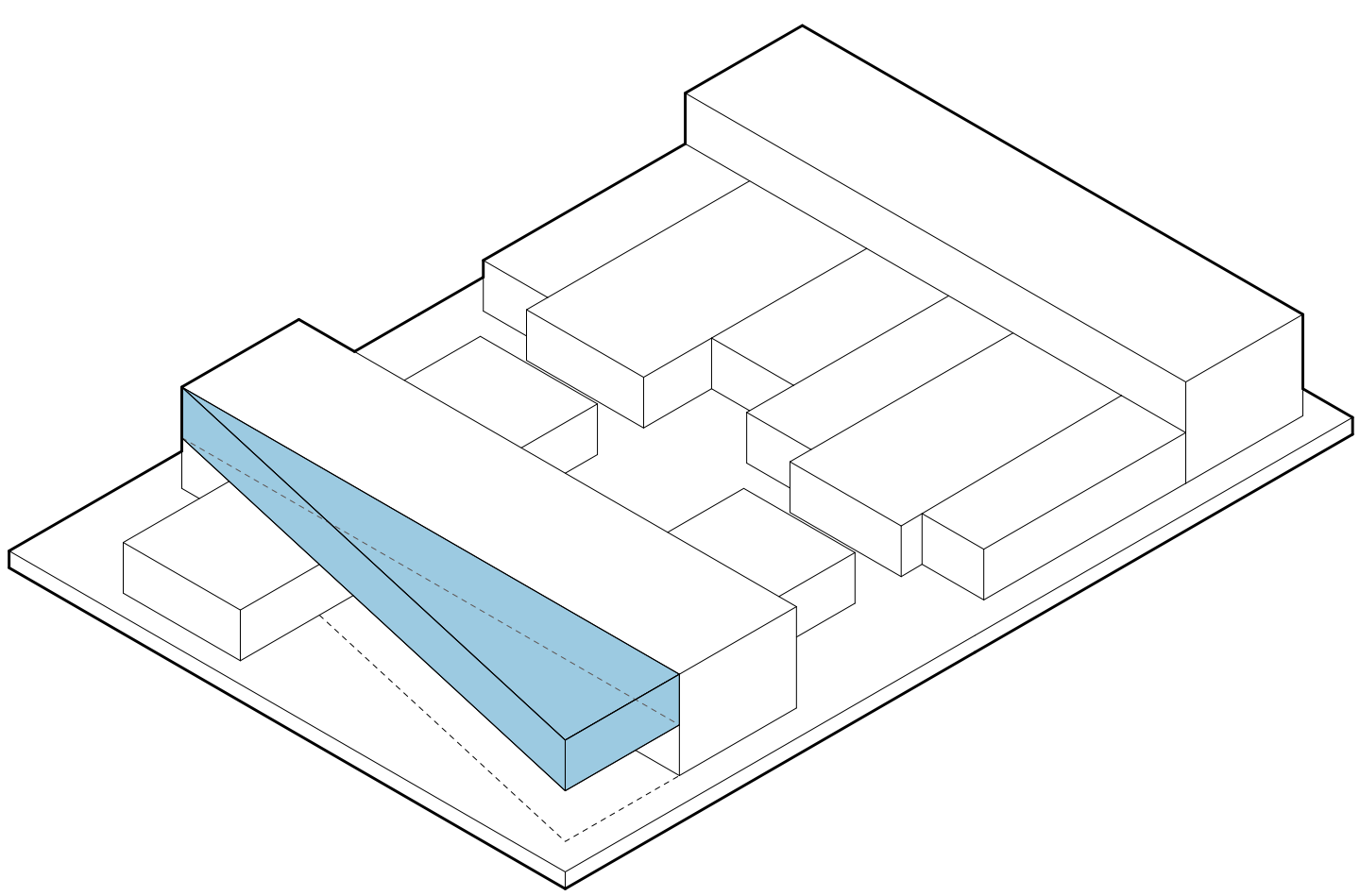
INITIAL 2 STORY MASS
THE 2 STORY MASS OF THE BUILDING CONNECTS BACK TO THE MAIN STREET PATH OF CIRCULATION AND HOW THE 2-STORY MASS WOULD BE THE MAIN FLOW OF CIRCULATION IN THE BUILDING.



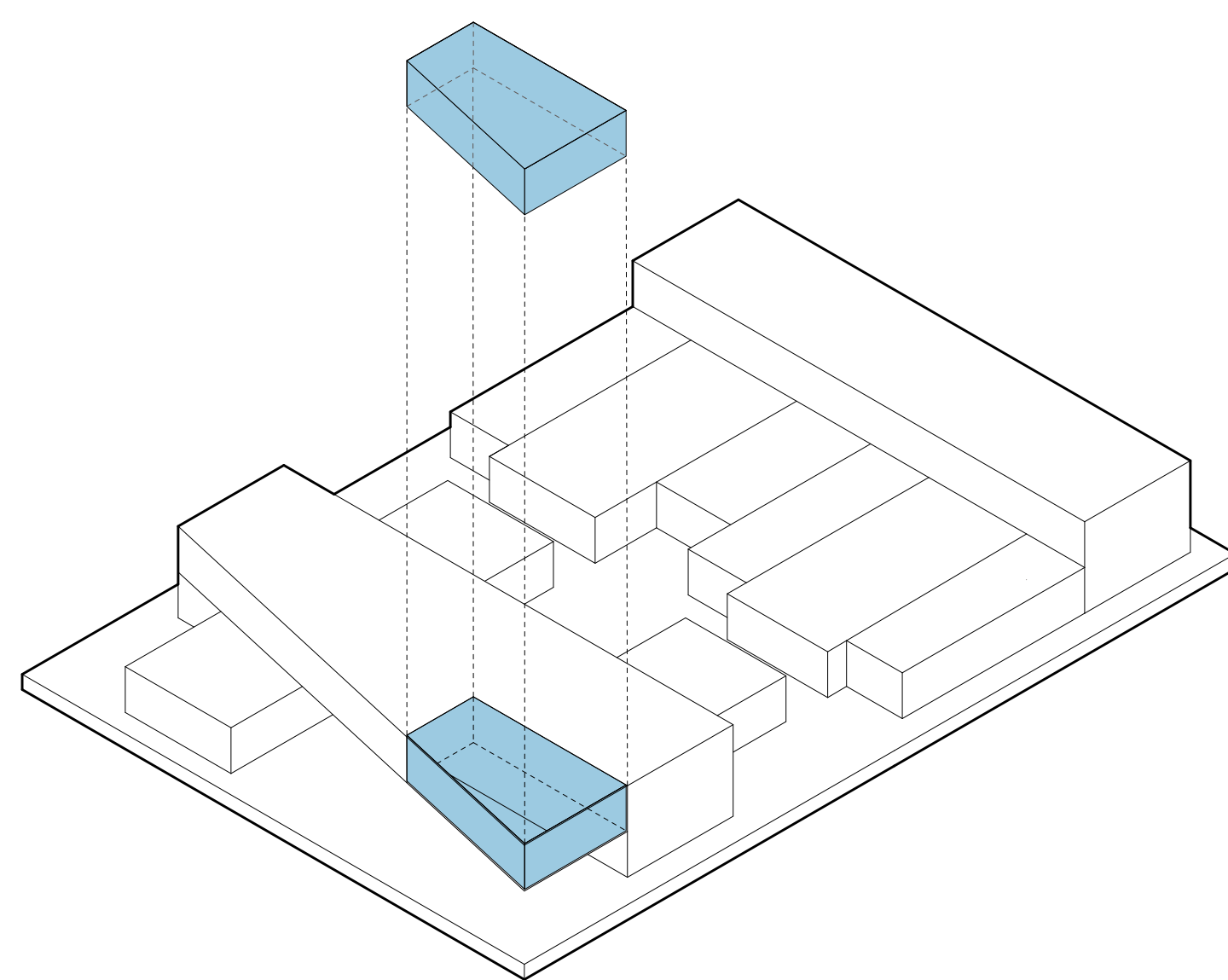
PUNCTURED GROUNDED MASS THROUGH GRID
BY USING THE MAIN STREET GRID THESE PUNCTURED MASSES WERE ADDED TO THE BUILDING TO SERVE AS SPACE TO BE STOPPED IN.



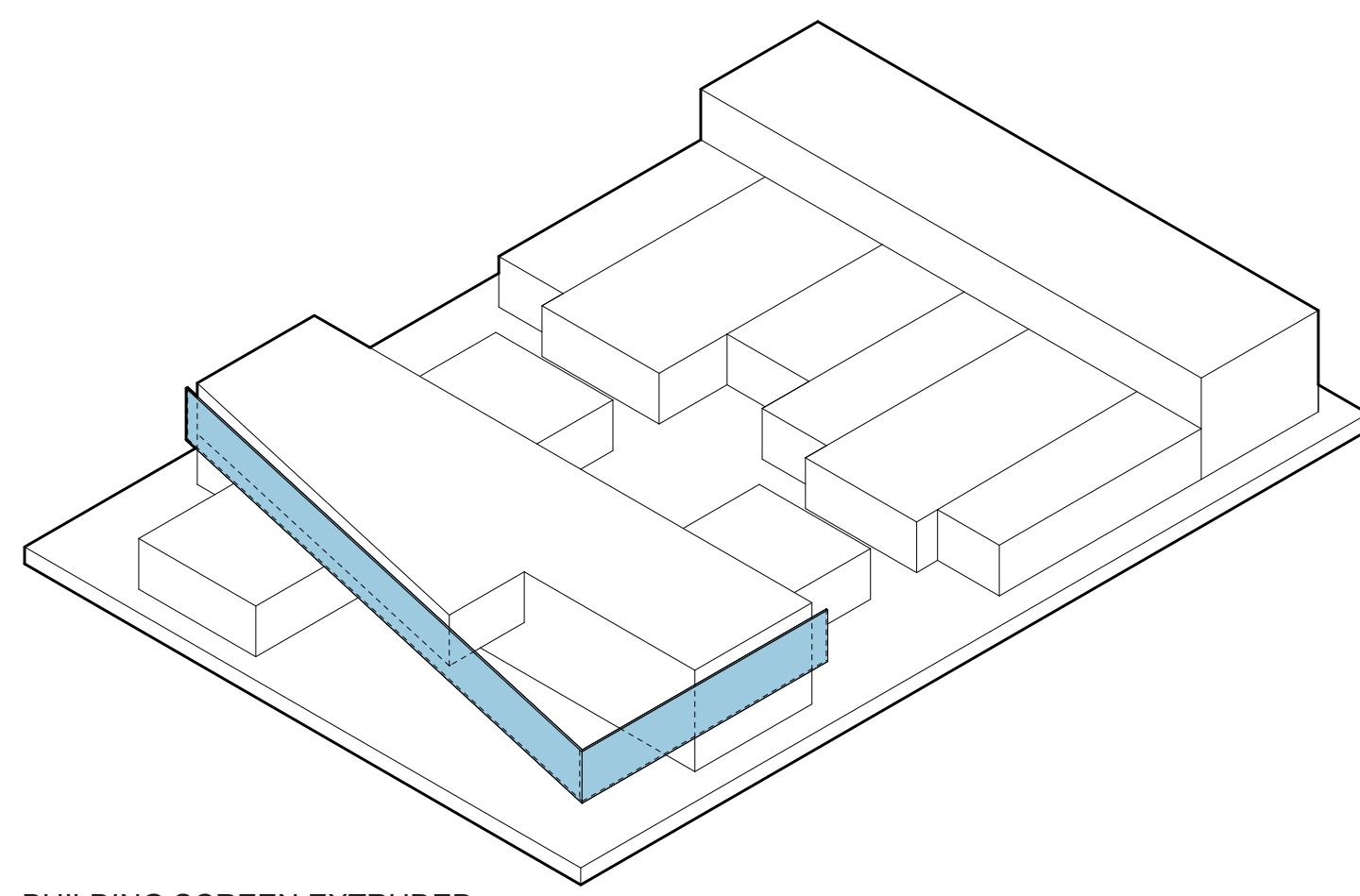
SERVICE GROUNDED MASS THROUGH GRID
BY USING THE MAIN STREET GRID ONCE MORE THIS GROUNDED MASS IS ADDED TO THE NORTHERN SIDE OF THE BUILDING TO SERVE AS SPACE FOR STAFF USES AS WELL AS UTILITIES TO BE STORED.



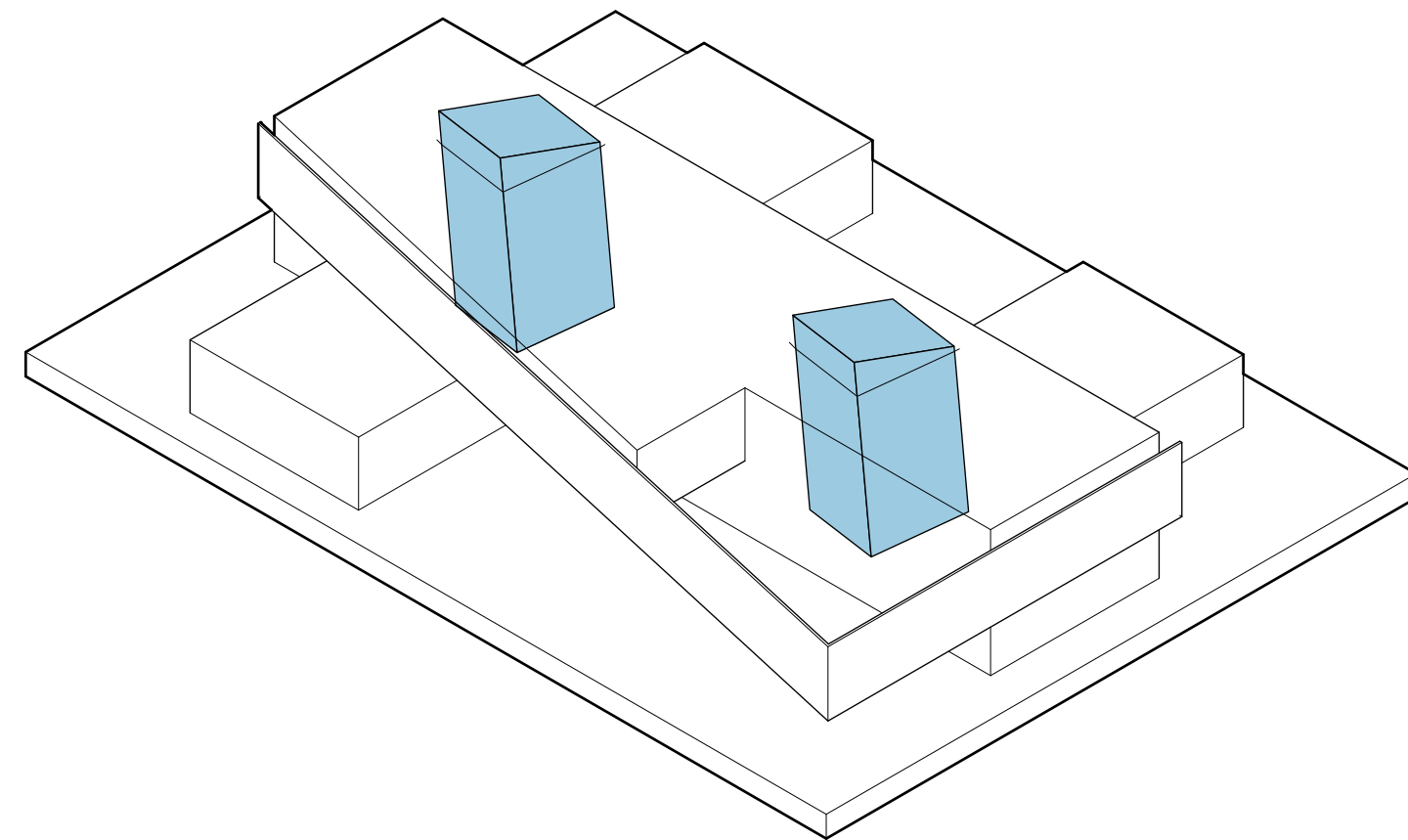
CANTILEVER
BY USING THE OVER LAY GRID OF THE CITY THIS CANTILEVER WAS EXTENDED OUT TO PROVIDE A SHELTER FOR THE COMMUNITY PLAZA.



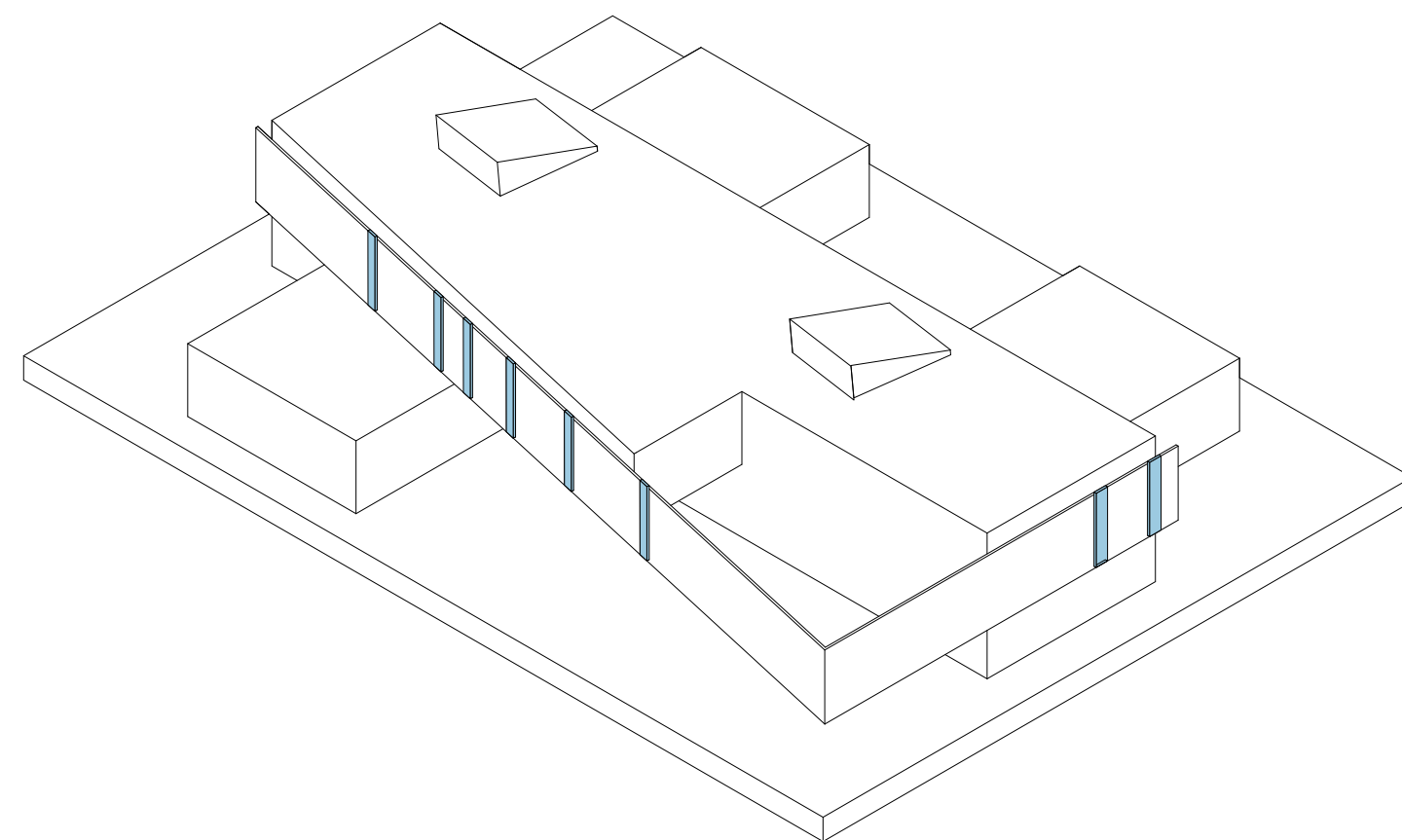
HOLE IN CANTILEVER FORMED
BY CARVING THIS HOLE IN THE CANTILEVER IT PROVIDES NATURE TO FLOW THROUGH THE CANTILEVER TO CONNECT THE UPPER FLOORS BACK DOWN TO THE PLAZA.



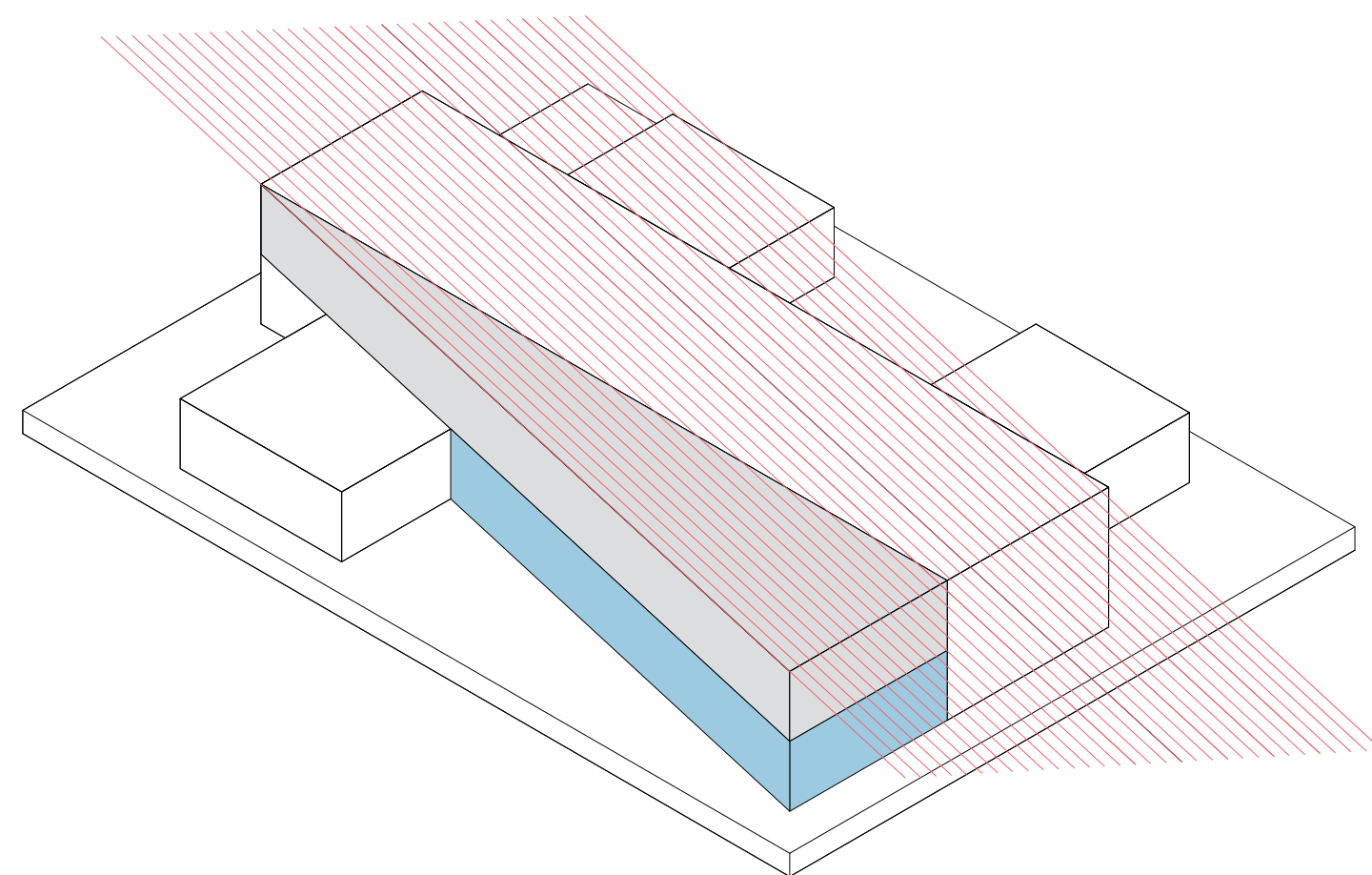
BUILDING SCREEN EXTRUDED
BY EXTRUDING THE SCREEN FROM THE SIDE OF THE BUILDING IT ALLOWS FOR INTERIOR SHADING AS WELL AS PROVIDES THE STRONG OVERHEAD PLANE THAT PEOPLE CROSS UNDER AS THEY ENTER INTO THE PLAZA.



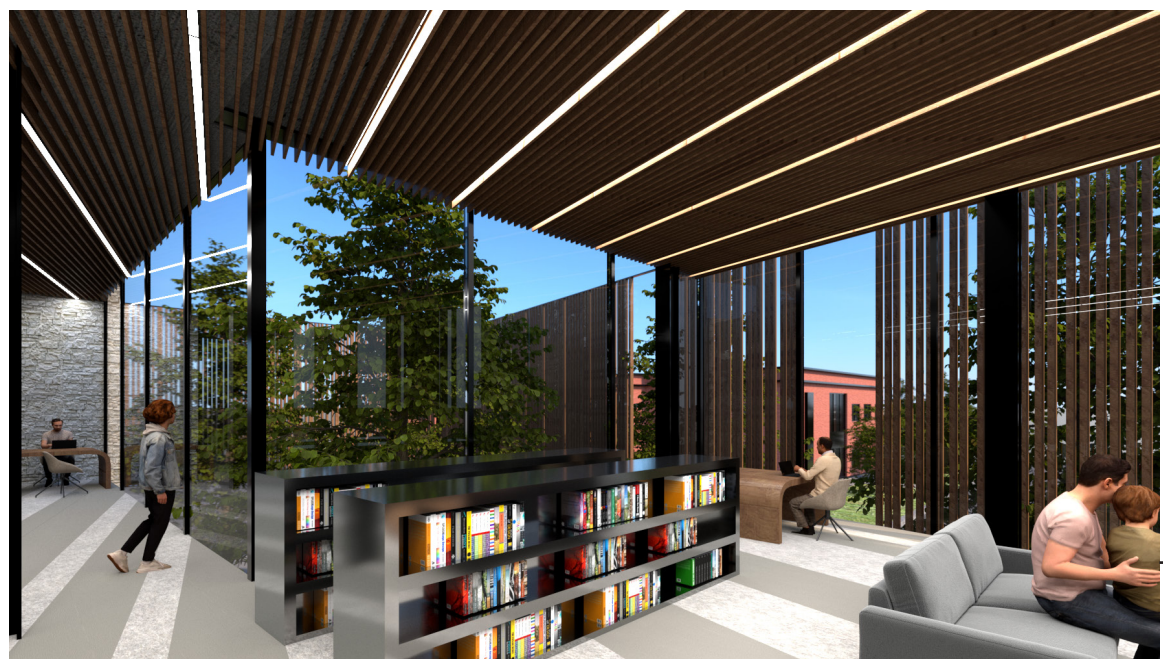
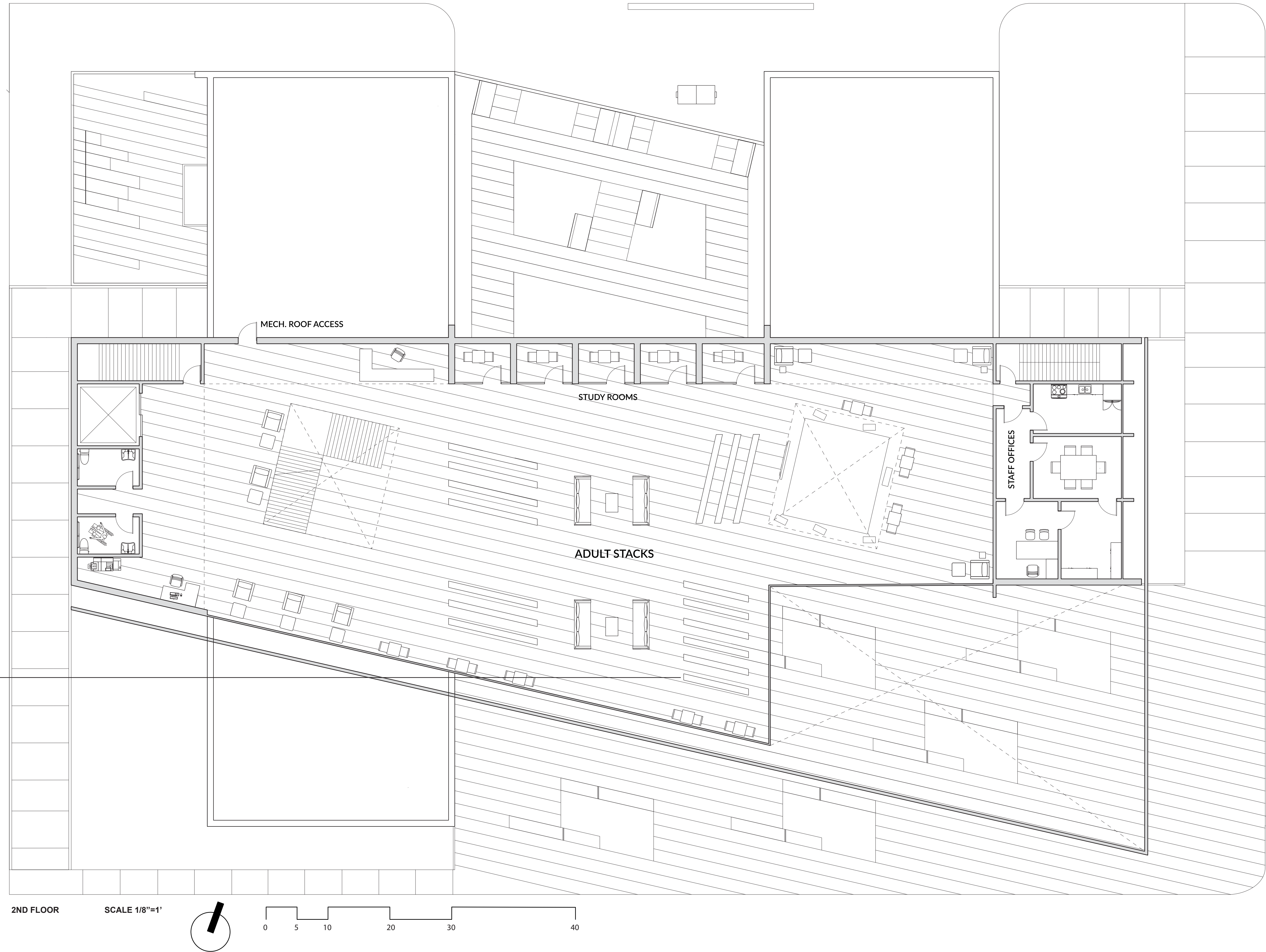
CLERESTORY BUILDING HOLES
BY CARVING THESE MULTISTORY SPACES INTO THE LIBRARY THAT LEAD TO A CLERESTORY ON THE ROOF IT ALLOWS FOR INDIRECT LIGHT TO ENTER THE BUILDING AND SPREAD THROUGH ALL THE FLOORS.



BUILDING SCREEN SHIFTING
BY SHIFTING THE SCREEN TO FORM THESE HOLES IT ALLOWS FOR A CONNECTION TO THE BUILDING FROM BOTH THE INSIDE AND THE OUTSIDE.



PARTI DIAGRAM
BY PULLING OUT THE SCREEN IT PROVIDES THIS SHELTERED SPACE FOR THE COMMUNITY WHILE ALSO EXTENDING A GRID THROUGH OUT THE BUILDING THAT SHAPES HOW MOST OF THE BUILDING WAS DESIGNED



VIEW UPSTAIRS LOOKING OUT INTO THE PLAZA THROUGH THE SCREEN



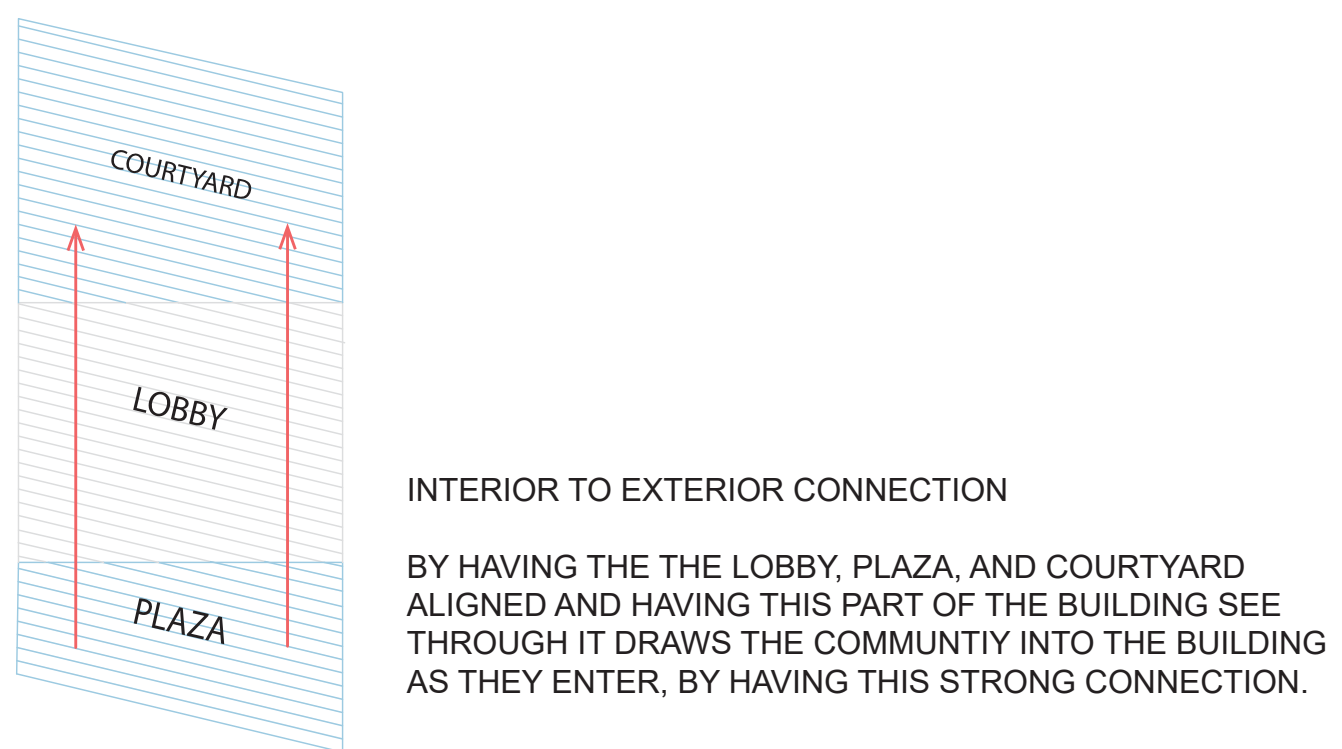
PRECEDENTS



POETRY FOUNDATION : JOHN RONAN
CHICAGO, ILLINOIS



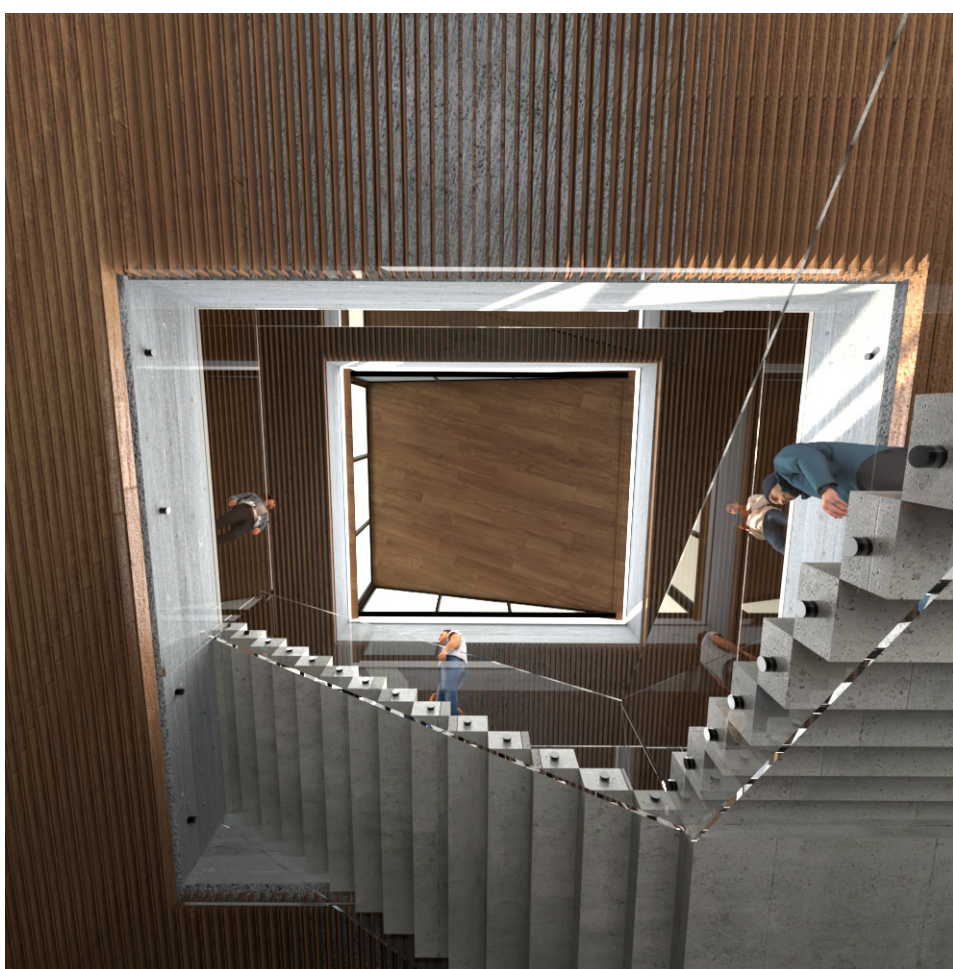
NORTHSIDE LIBRARY : NBBJ
COLUMBUS, OHIO



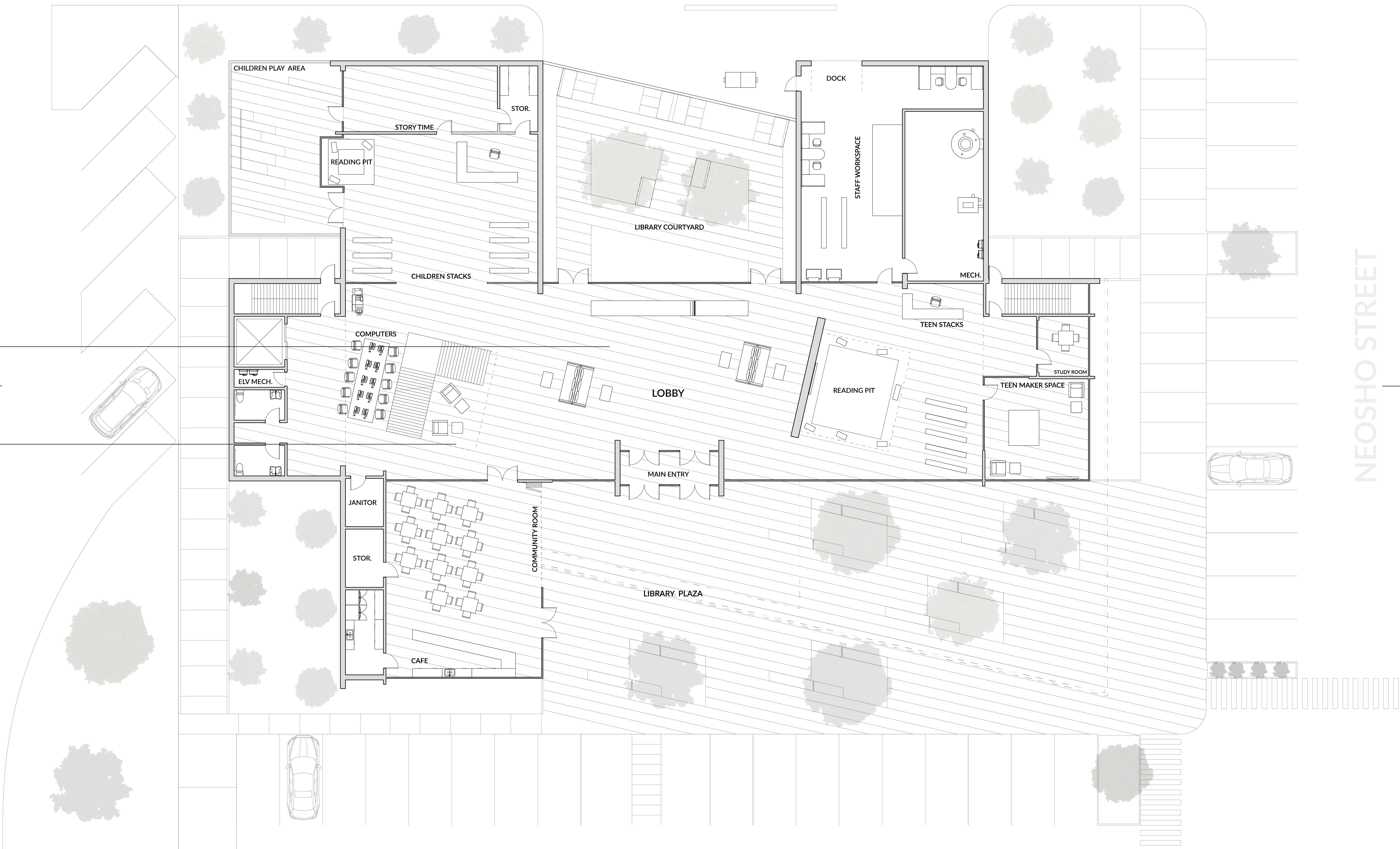
INTERIOR TO EXTERIOR CONNECTION
BY HAVING THE THE LOBBY, PLAZA, AND COURTYARD
ALIGNED AND HAVING THIS PART OF THE BUILDING SEE
THROUGH IT DRAWS THE COMMUNITY INTO THE BUILDING
AS THEY ENTER, BY HAVING THIS STRONG CONNECTION.



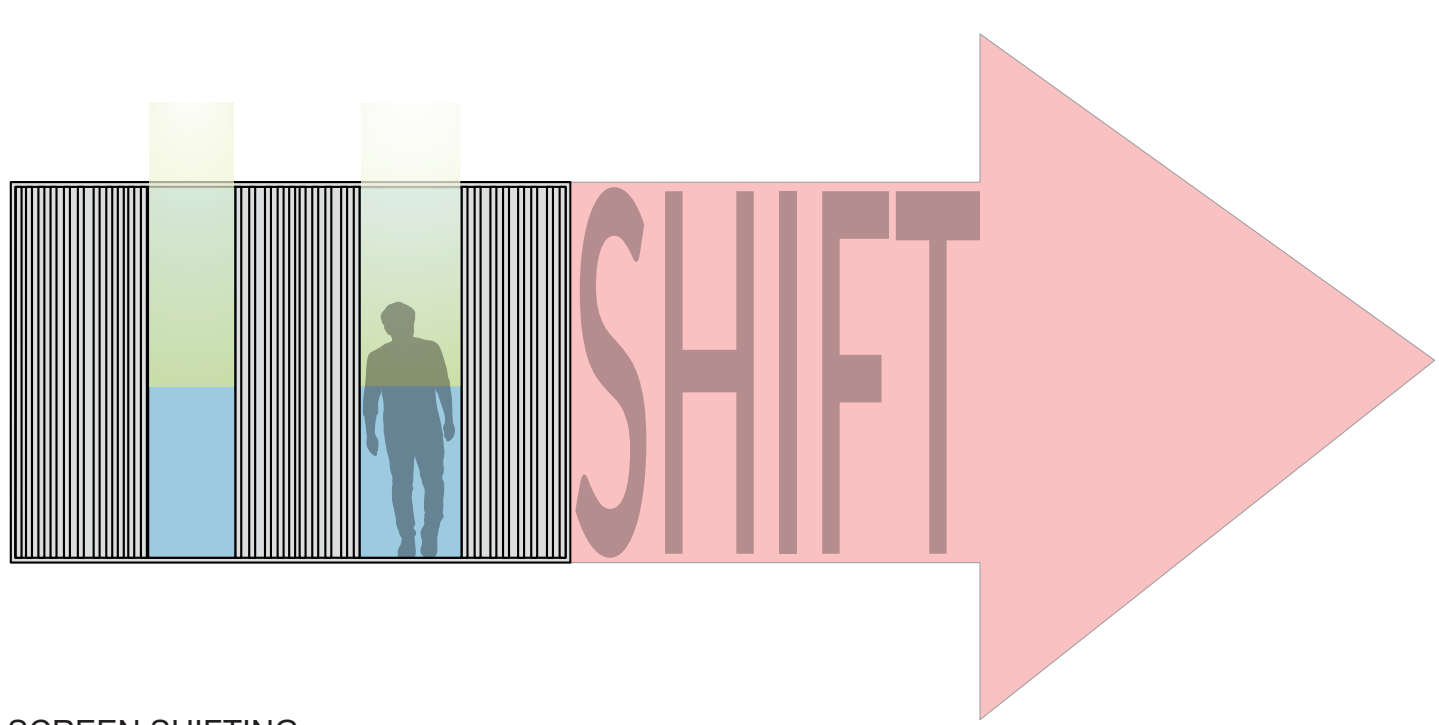
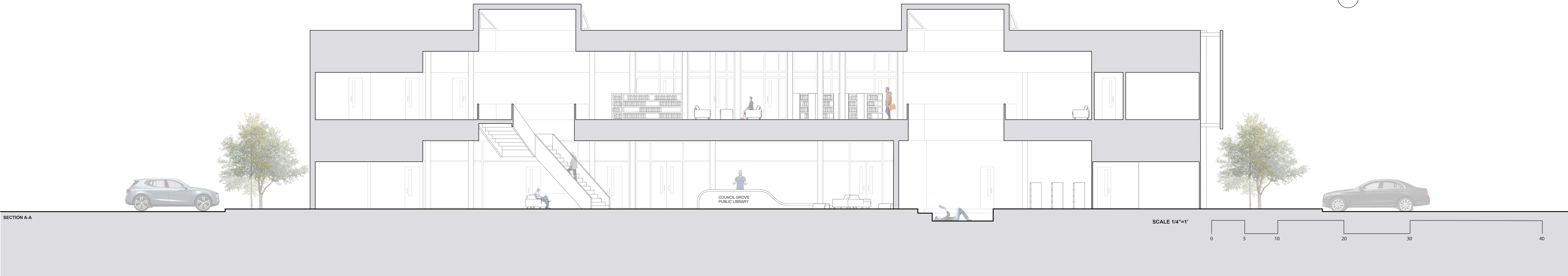
VIEW WHILE ENTERING THE LIBRARY



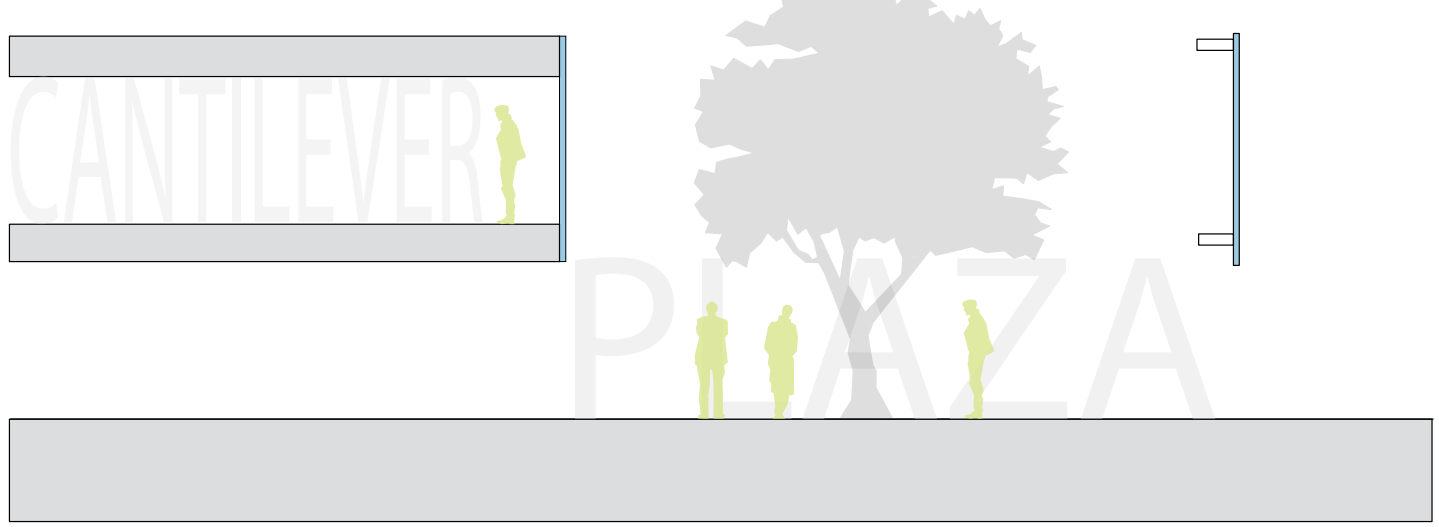
VIEW OF THE EXPERIENCE WHILE SITTING IN THE
MULTI-LEVEL CLERESTORY SPACES



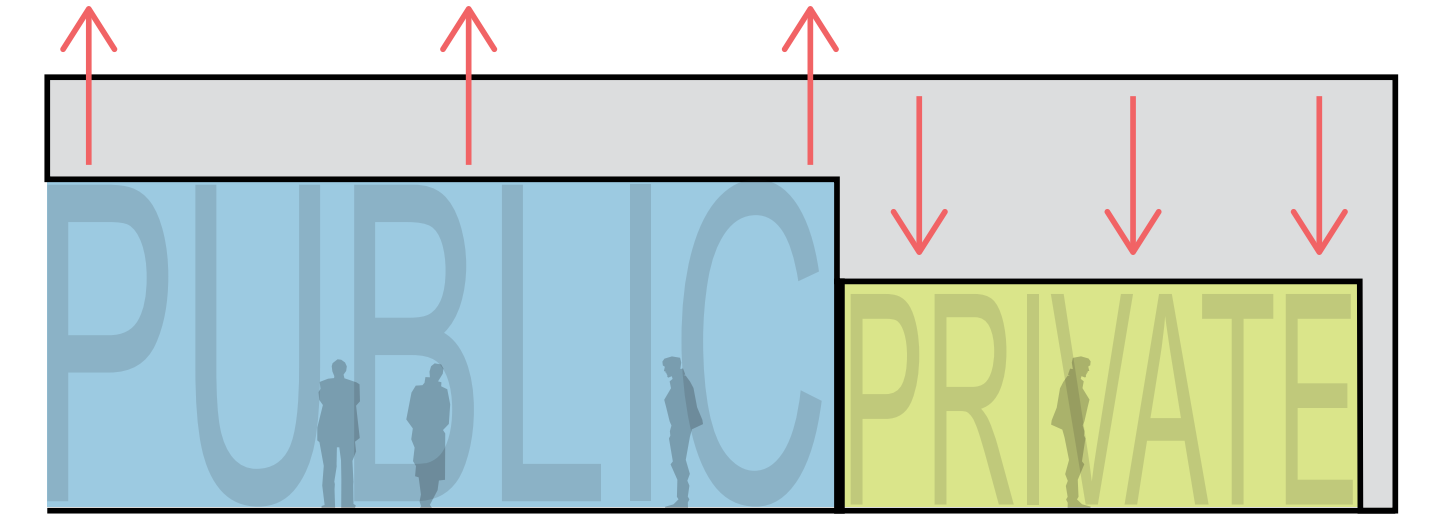
1ST FLOOR



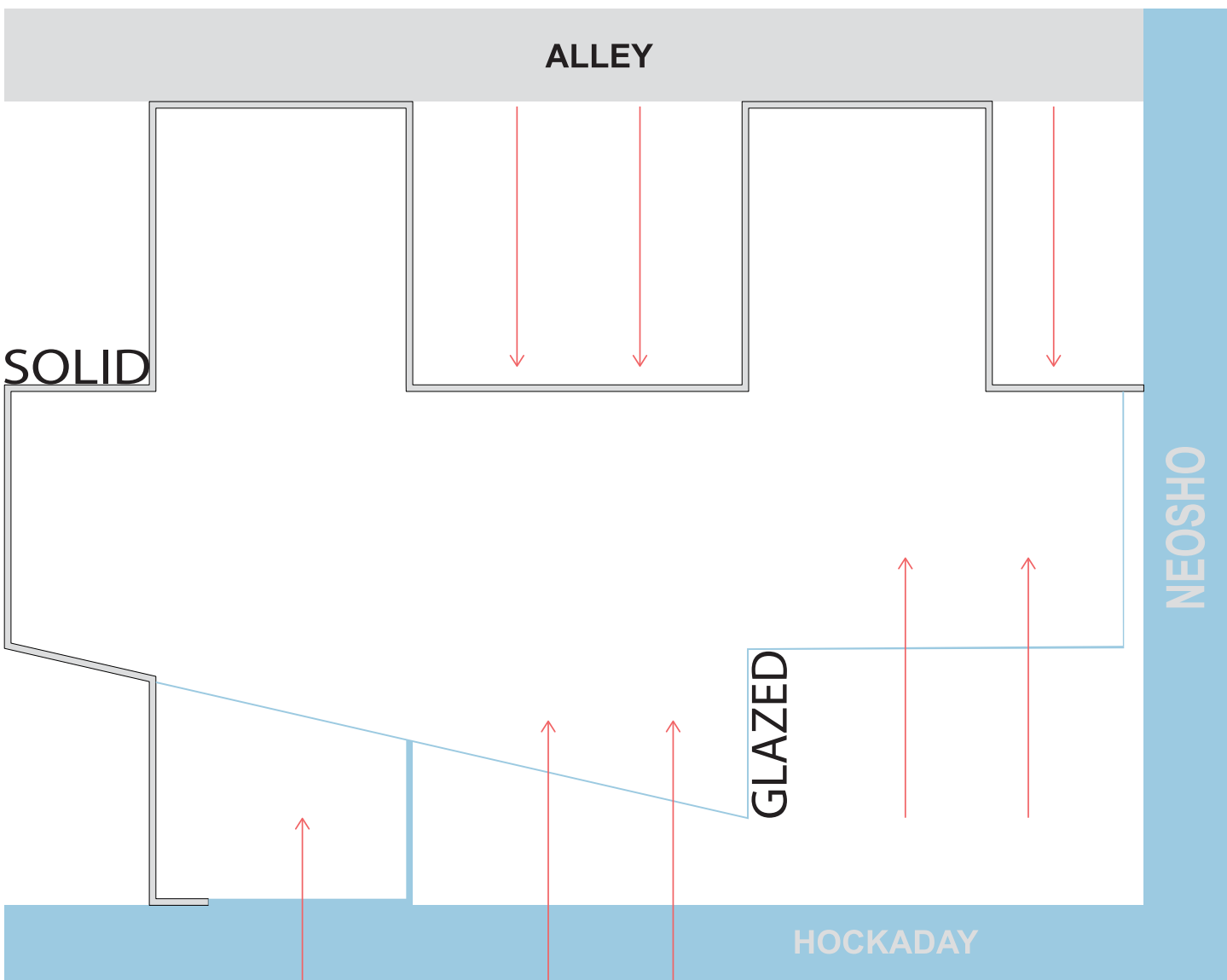
SCREEN SHIFTING
BY SHIFTING THE SCREEN PRICES IN CERTAIN PLACES IT ALLOWS FOR LIGHT TO ENTER
THE BUILDING MORE AS WELL AS PROVIDE BETTER VIEWS OUT OF THE SCREEN



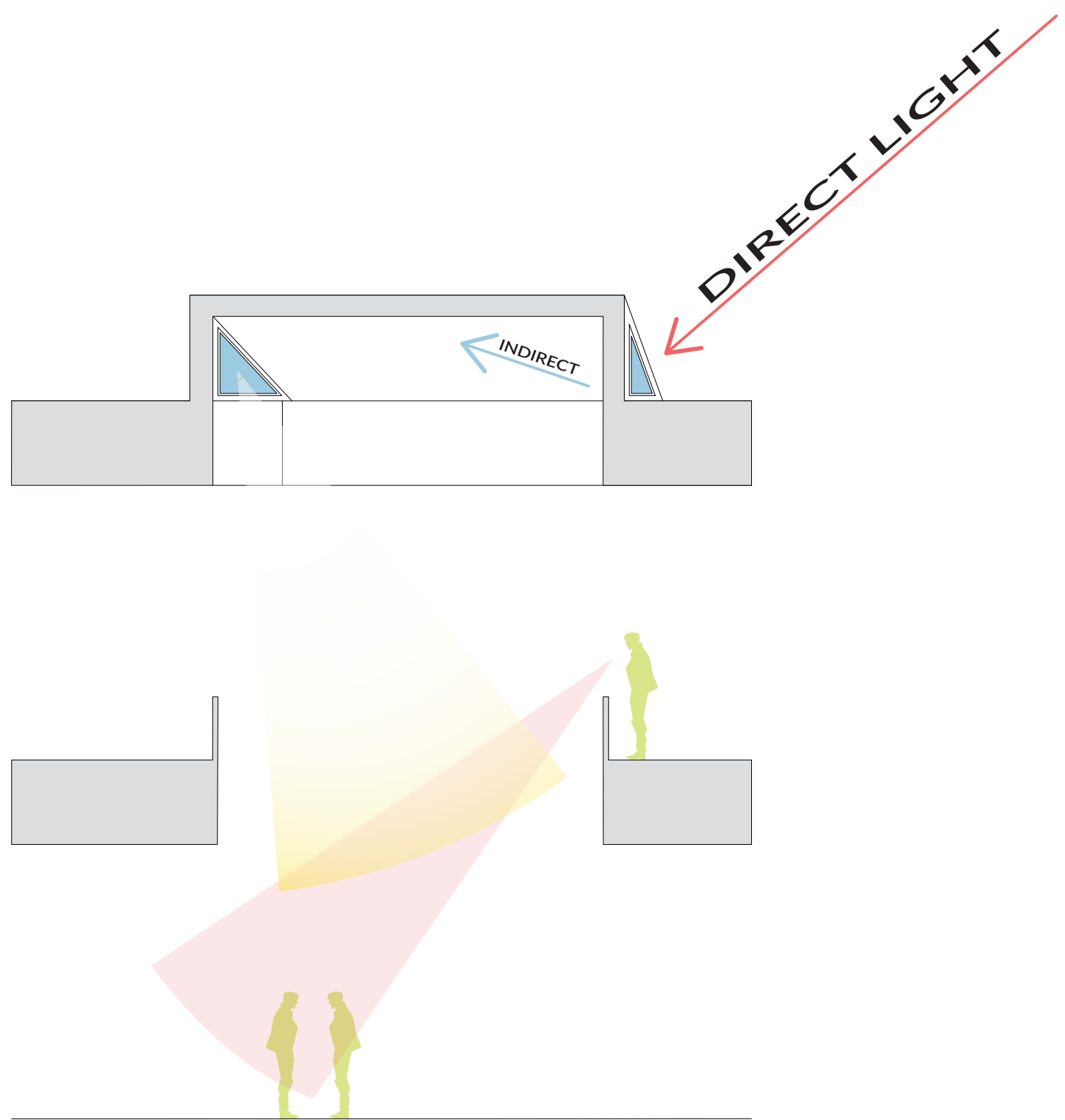
PLAZA TO SECOND STORY CONNECTION
BY HAVING THE HOLE IN THE BUILDING IT ALLOWS FOR TREES TO FLOW THROUGH THE
BUILDING AND CONNECT THE SECOND FLOOR BACK DOWN TO THE PLAZA BY HAVING THE
SENSE OF NATURE ON THE SECOND FLOOR WITHOUT BEING DOWN THERE.



ROOF HEIGHT TO ADJUST FOR PROGRAM
BY SHIFTING THE ROOF HEIGHT IT ALLOWS FOR HIGHER CEILINGS IN SPACES THAT WERE
FOR THE PUBLIC AND LOW ONES FOR THE MORE PRIVATIZED ZONES.



BUILDING CONTEXT MATERIAL ADJUSTMENT
THE BACK OF THE BUILDING IS PRIMARILY SOLID TO ADDRESS THE ALLEY CONNECTION
AND THE THE FRONT OF THE BUILDING IS ALL GLASS TO HAVE A STRONG CONNECTION
TO THE CORNER AND THE TWO MAIN ROADS.



CLERESTORY SPACES
WITHIN THE CLERESTORY SPACE THERE IS MOMENTS WHERE THE INDIRECT LIGHT
SHINES THROUGH THE WHOLE BUILDING AND BECAUSE OF THE FLOOR BEING OPEN
THERE IS A STRONG SENSE OF CONNECTION BETWEEN THE COMMUNITY WITHIN THE
SPACES.