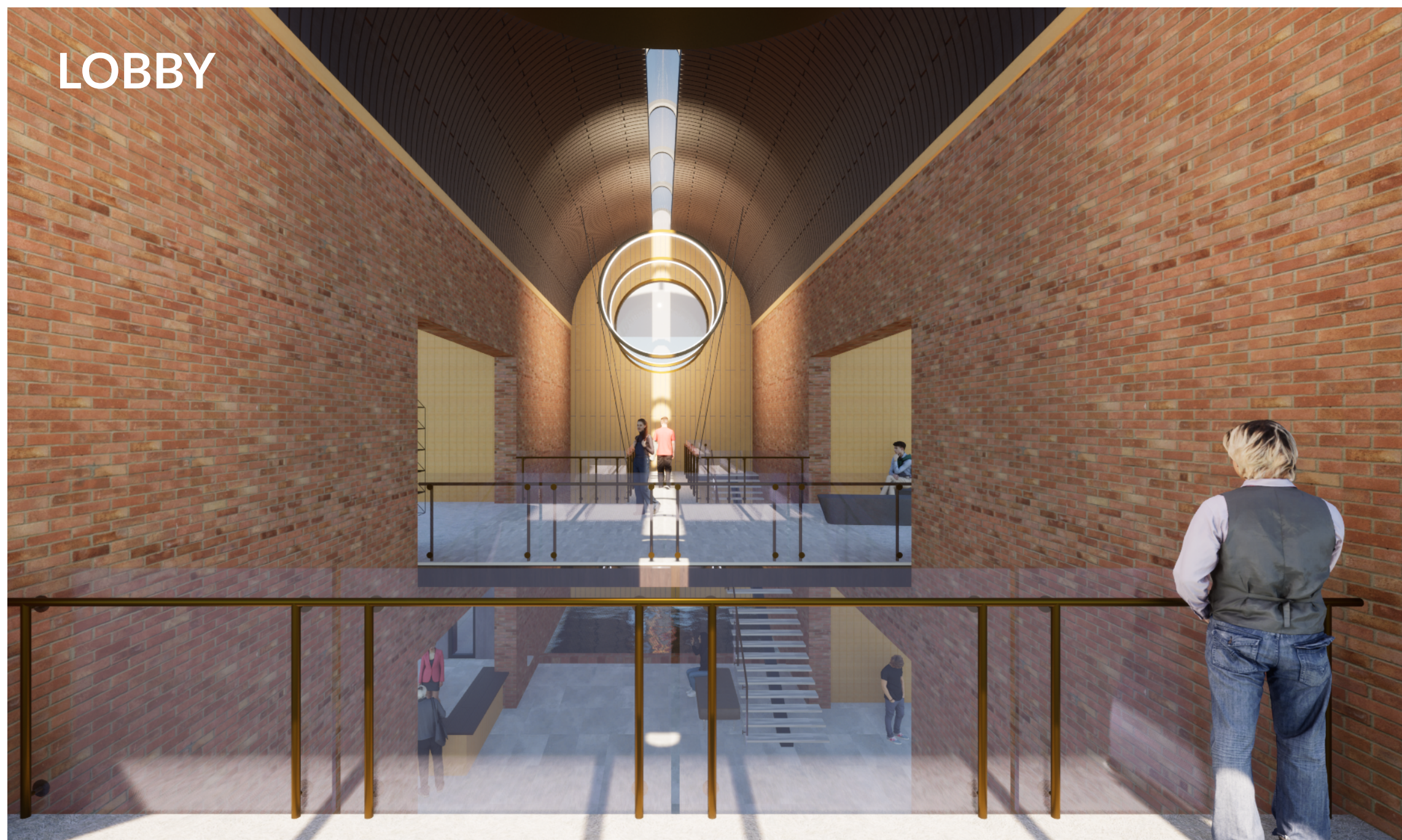
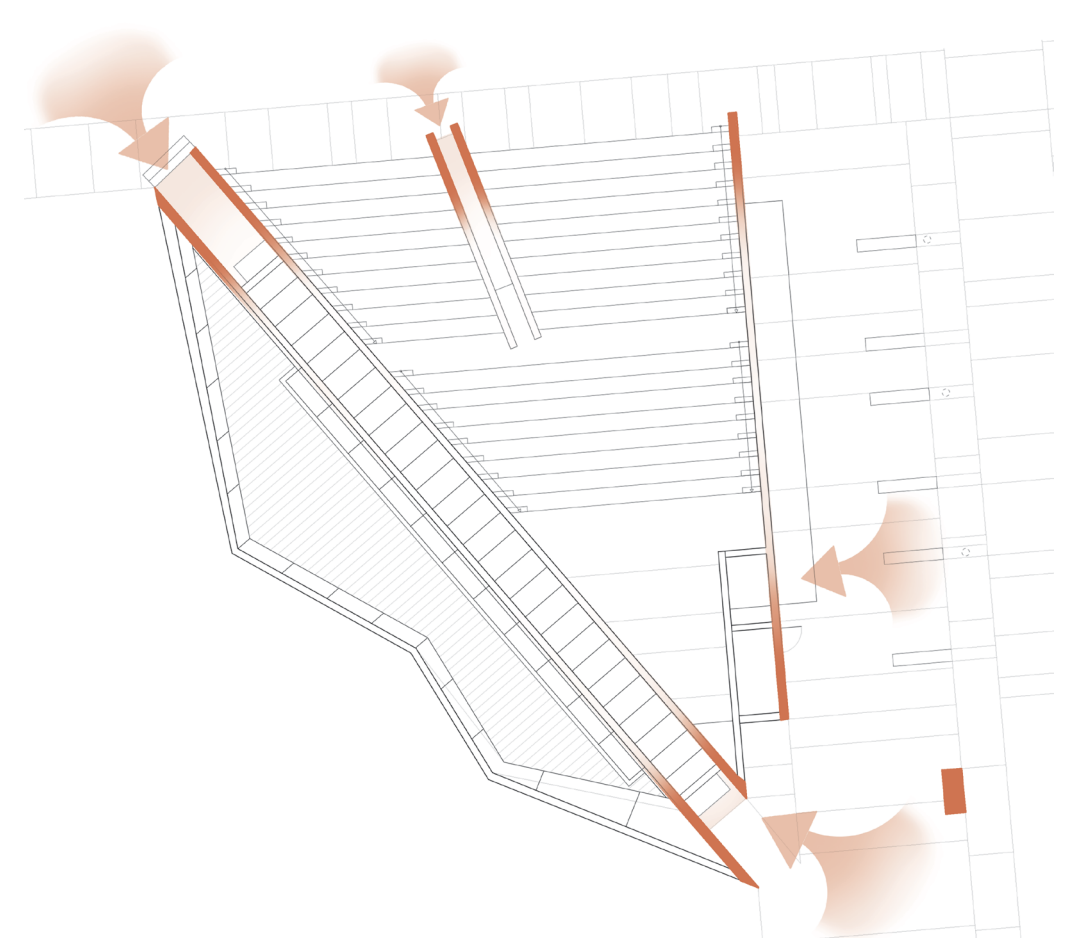
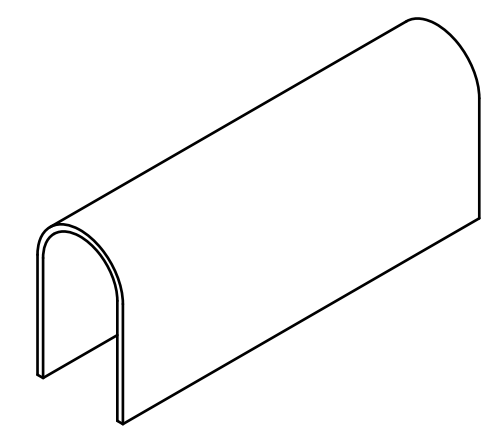


COUNCIL GROVE PUBLIC LIBRARY

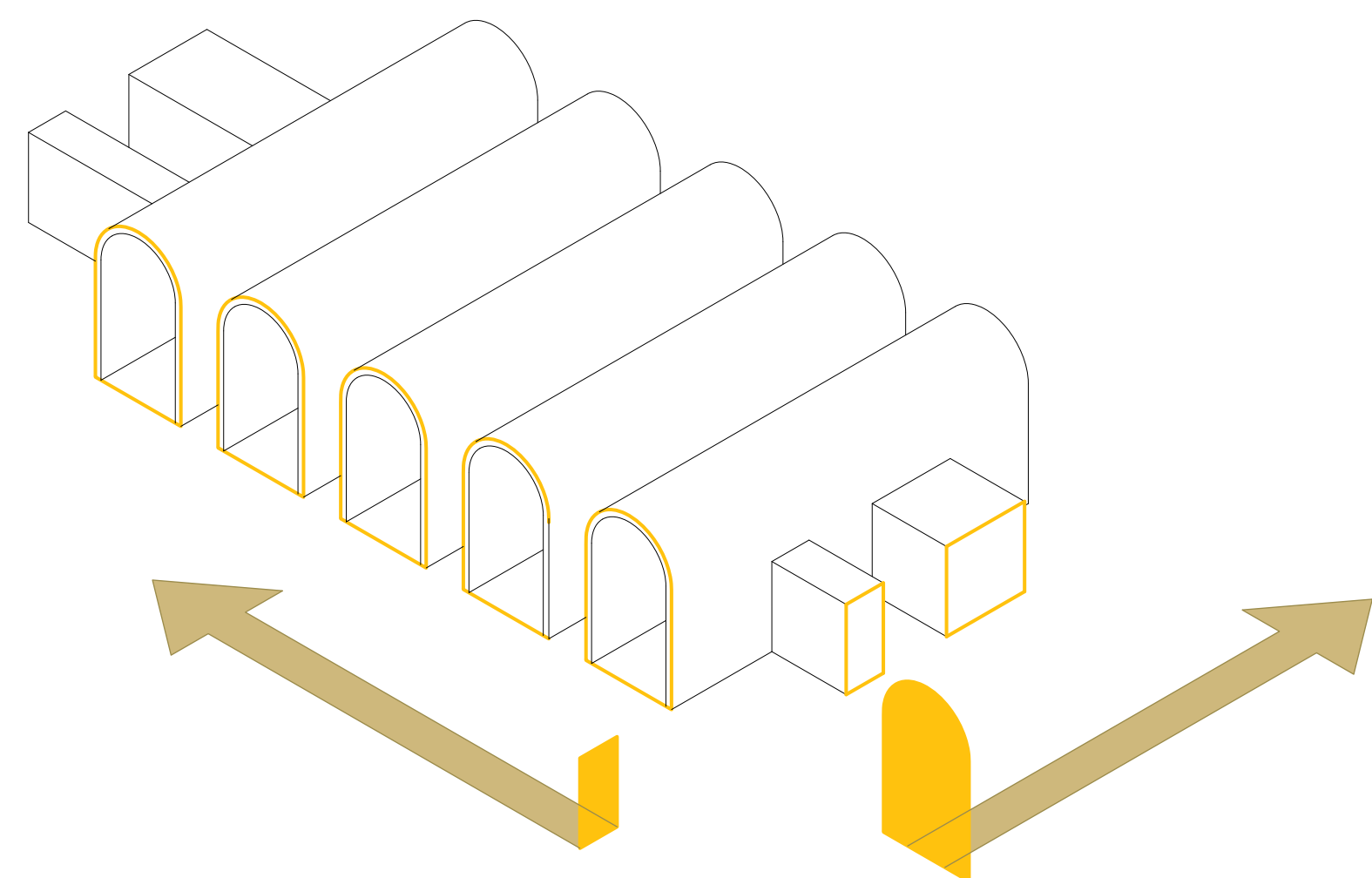
LOGAN MCINTOSH ADS2 SPRING 2023



VAULT VOLUME
The base volume is a barrel vault, based on the tradition of library construction and the arches of Council Grove.



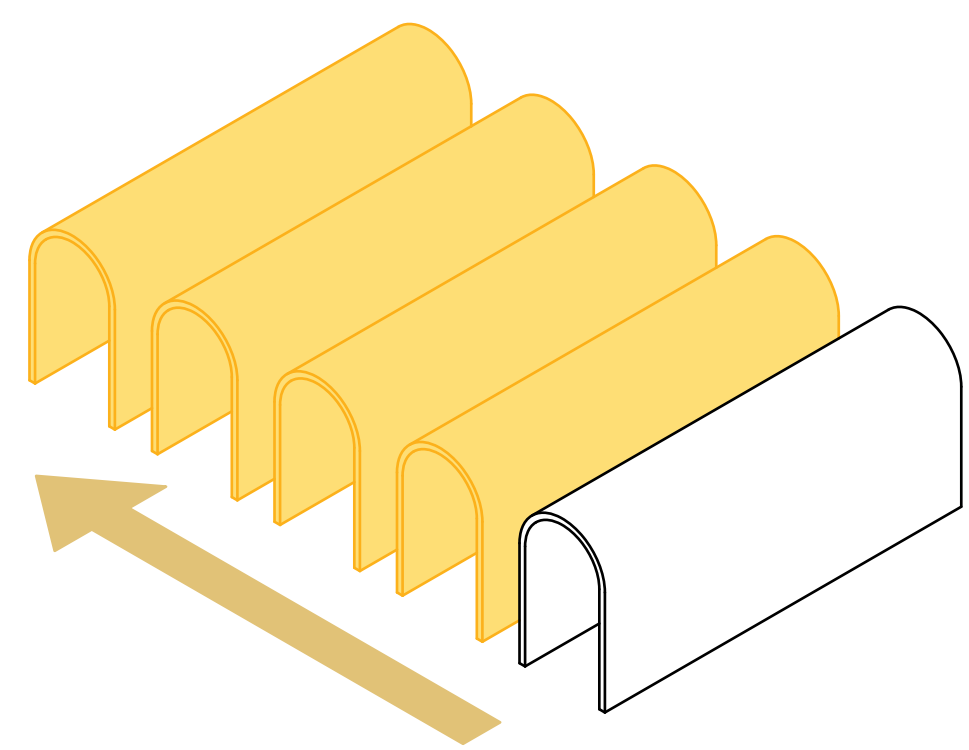
MONUMENTAL PRECEDENT
The Curno Public Library uses massive stereotomic walls to separate program and signify important spaces.



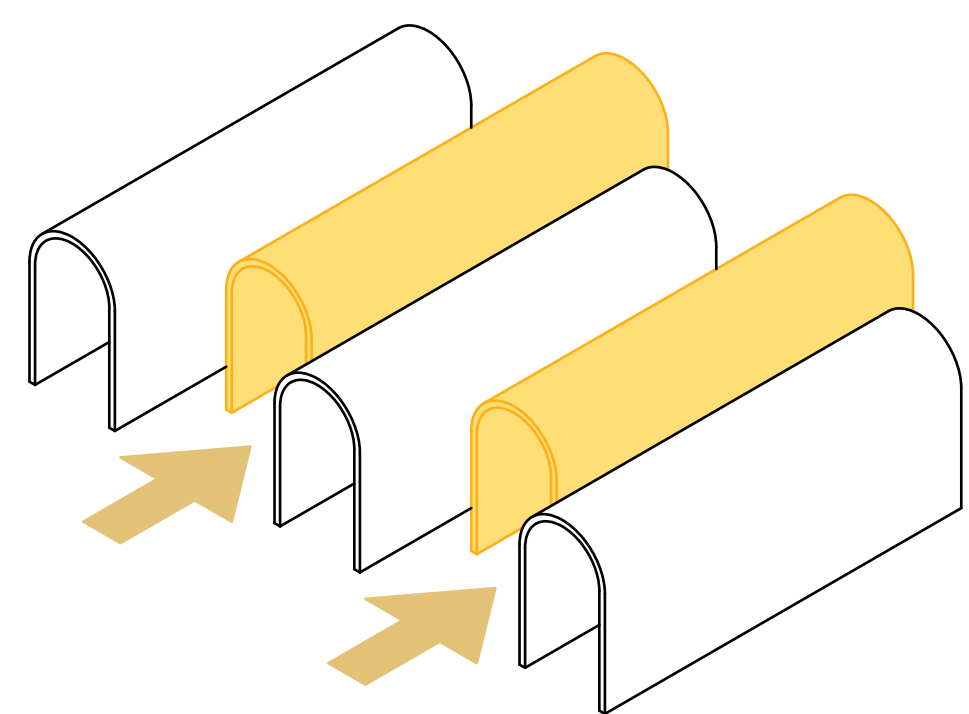
PARTI
Monumental arches extrude on the North-South axis, and are punctured perpendicularly by rectangular passages.

The library aims to provide Council Grove with all the amenities of a modern media center while also serving as a community hub, where people are drawn to gather in pleasant spaces for a wide variety of purposes. Form is inspired by both local architecture and precedents found abroad in the library typology. The large vaults embody a somewhat paradoxical character inherent to many great libraries, which have awe inspiring dimensions yet allow for contemplative refuge. Smaller fin details complement the large scale massing to achieve a more enclosed feeling with wells of privacy rather than covered expanses.

ARRAY
The vault repeats five times to house primary programmatic functions.



SHIFT
Two middle vaults shift back to define semi-enclosed exterior spaces.



SOUTH ELEVATION
SCALE 1/8"=1'0"



EAST ELEVATION
SCALE 1/8"=1'0"

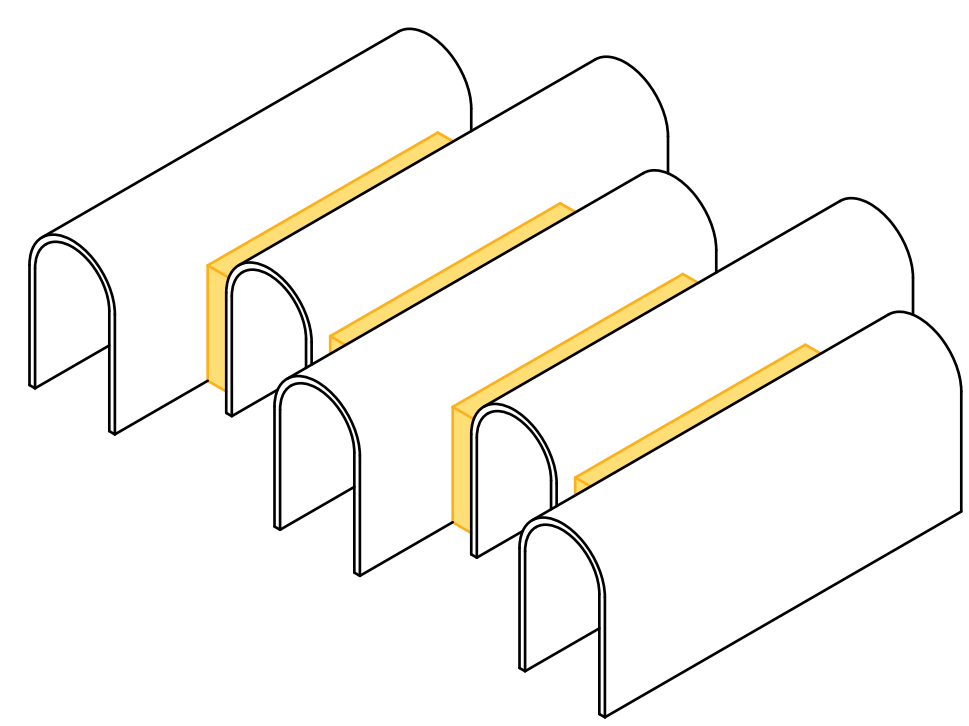
The downtown site suggests fitting in to Council Grove's existing style, while conversely standing out as a focal point for the community

The vernacular architecture of Council Grove consists of masonry arches found in many of the historic buildings downtown, including immediately adjacent to the site

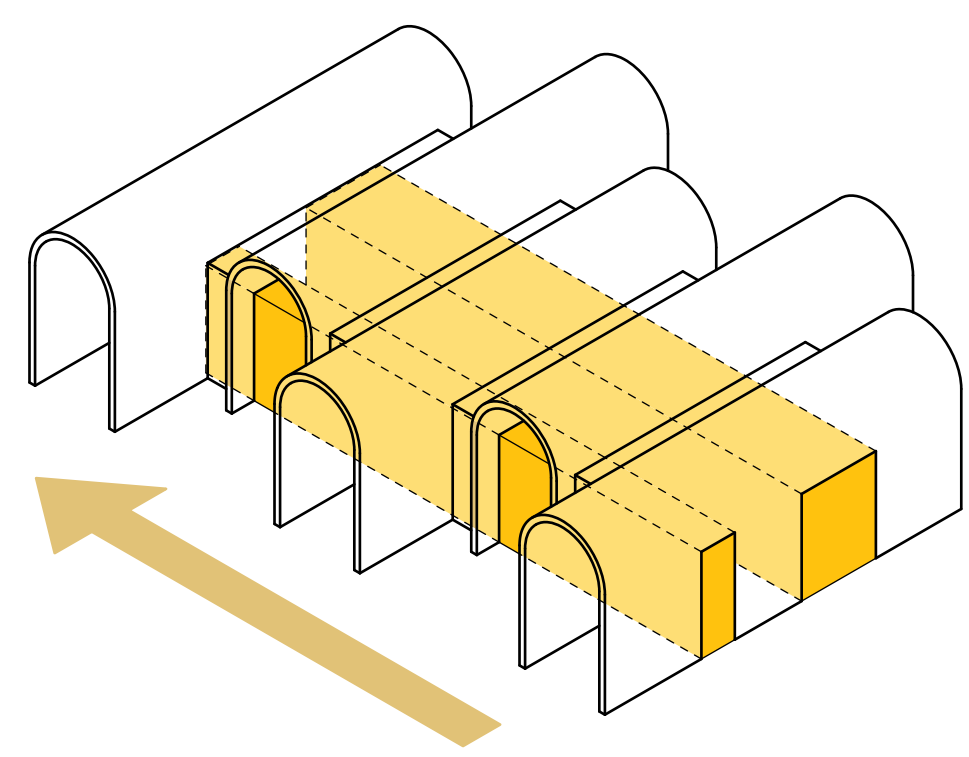
The library expands on the arched form in extruded barrel vaults, keeping in tune with its surroundings, but forming dramatic and interesting spaces like the lobby

All the functions of a modern library are housed within the vaulted forms, which are linked together on each level to maintain functionality

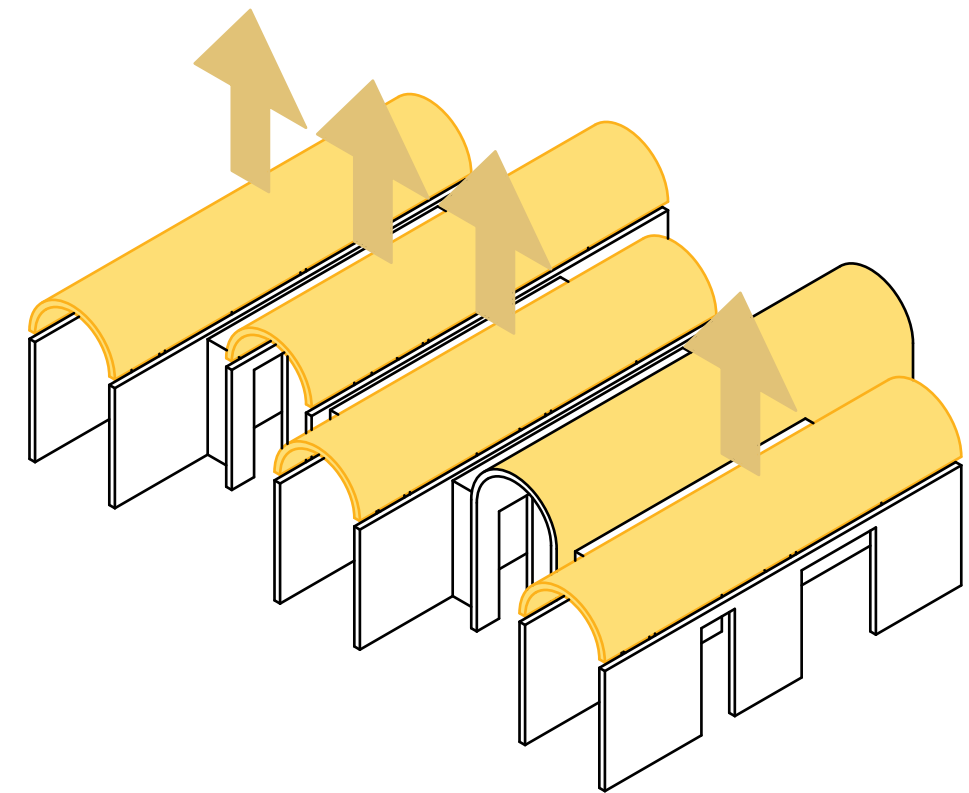
INFILL
Smaller secondary and service spaces fill in the gaps between the large vaults.



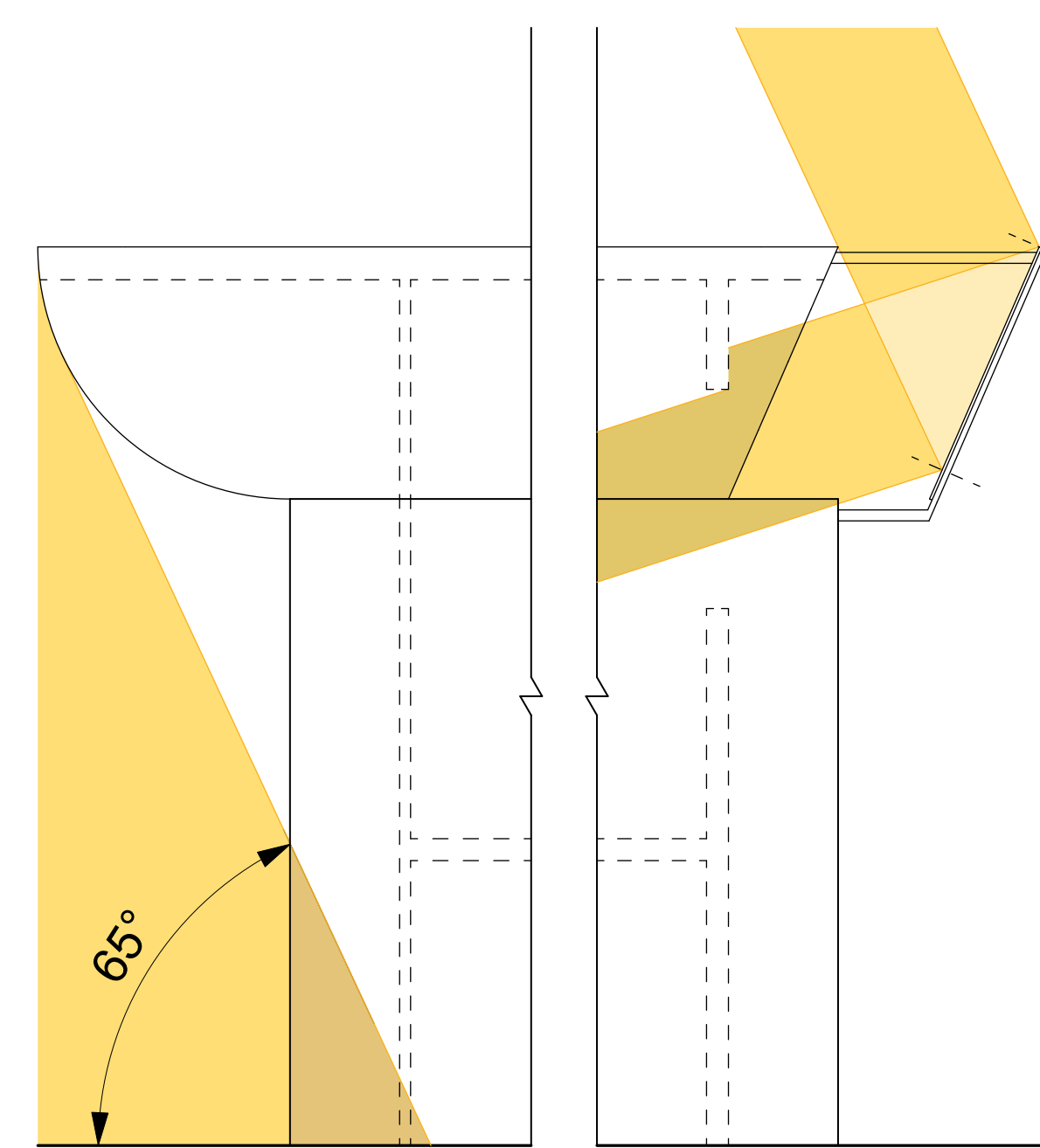
PUNCTURE
Two rows of openings punch through the vault walls, linking spaces together and breaking up the otherwise imposing east facade.



LIFT
The tops of each arch lift up, admitting clerestory light through the gap left over.



Space end as Light Well
The second floor pulls back at select moments to let light into the ground floor from glazed vault ends

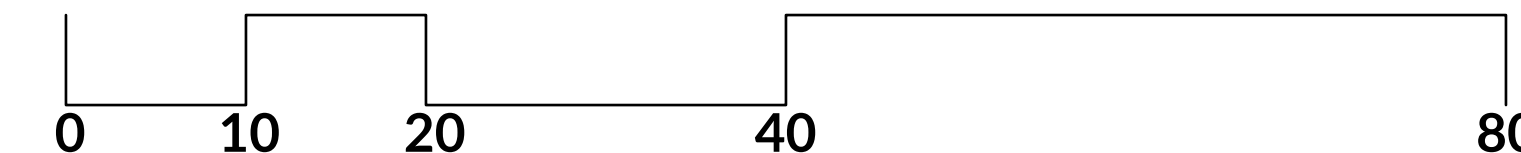
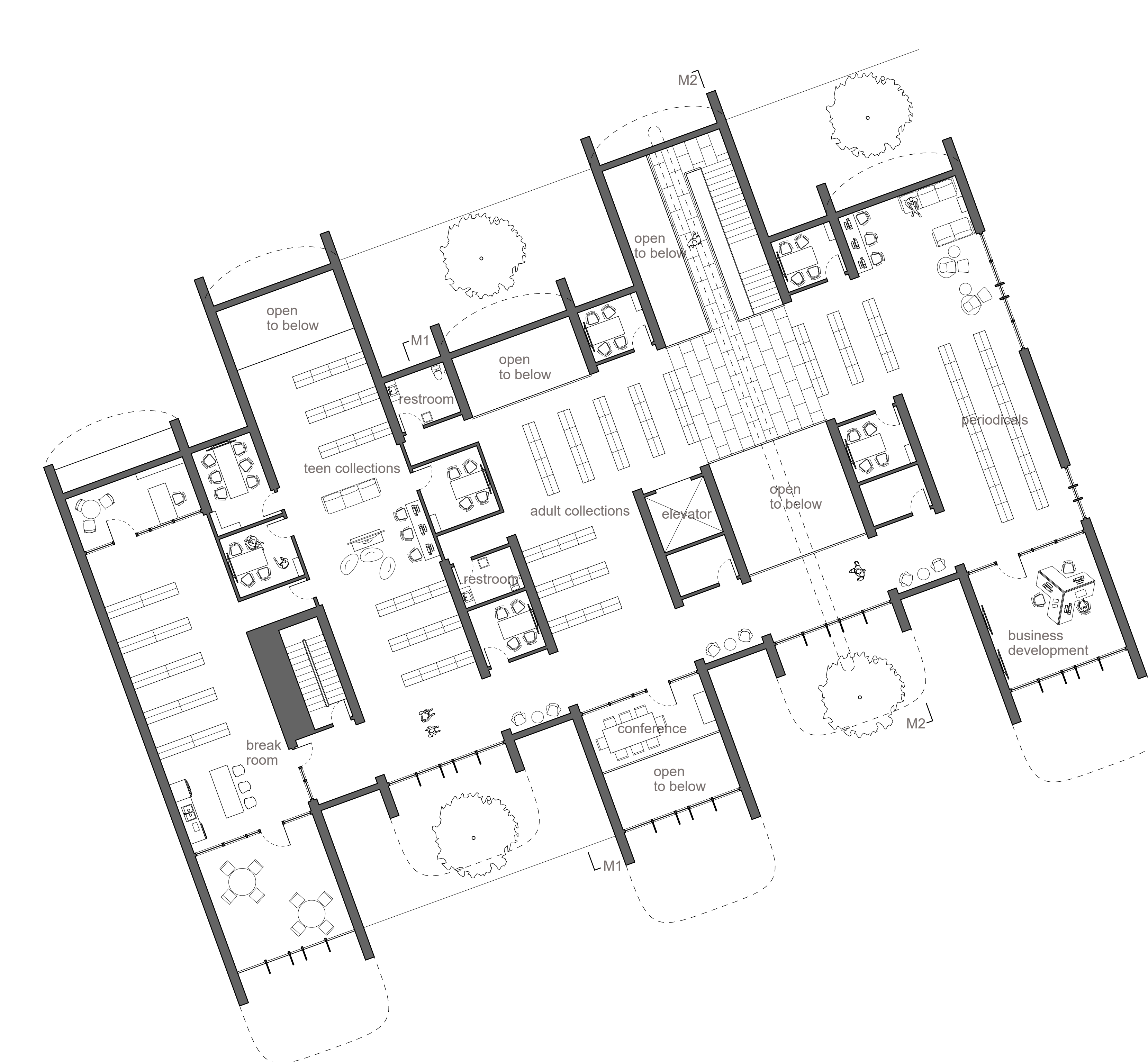
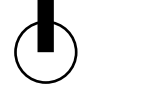


SUN SHADE VS REFLECTION
The overheated period for Kansas starts in mid-April when the sun is 65° above the horizon at noon. The southern vault cusp begins fully shading its window shortly past this time, while reflectors on the north bring in less intense natural light at the otherwise shaded angles.

GROUND FLOOR PLAN



SECOND FLOOR PLAN



SECTION A-A'
SCALE 1/4"=1'0"

