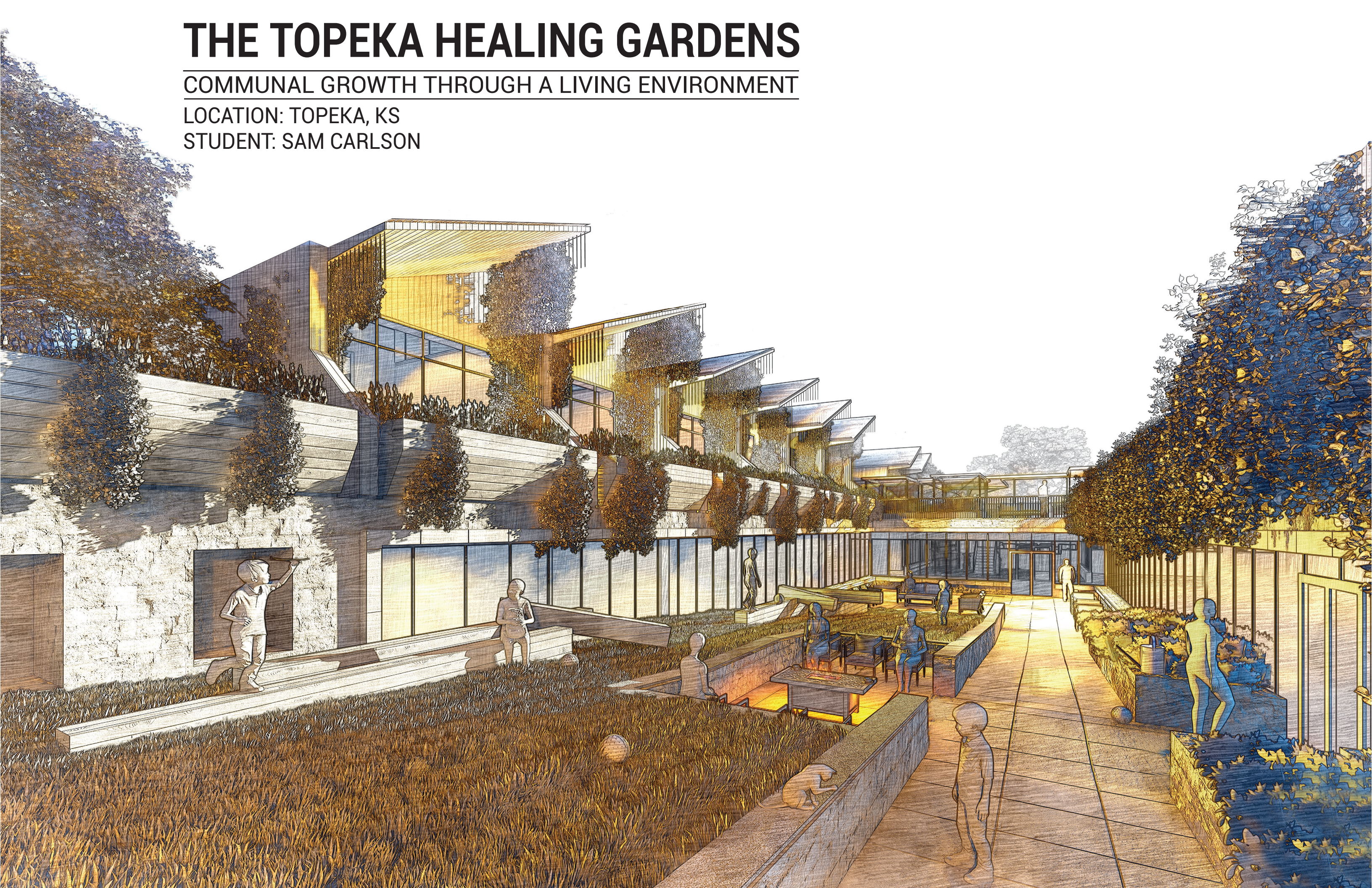


THE TOPEKA HEALING GARDENS

COMMUNAL GROWTH THROUGH A LIVING ENVIRONMENT

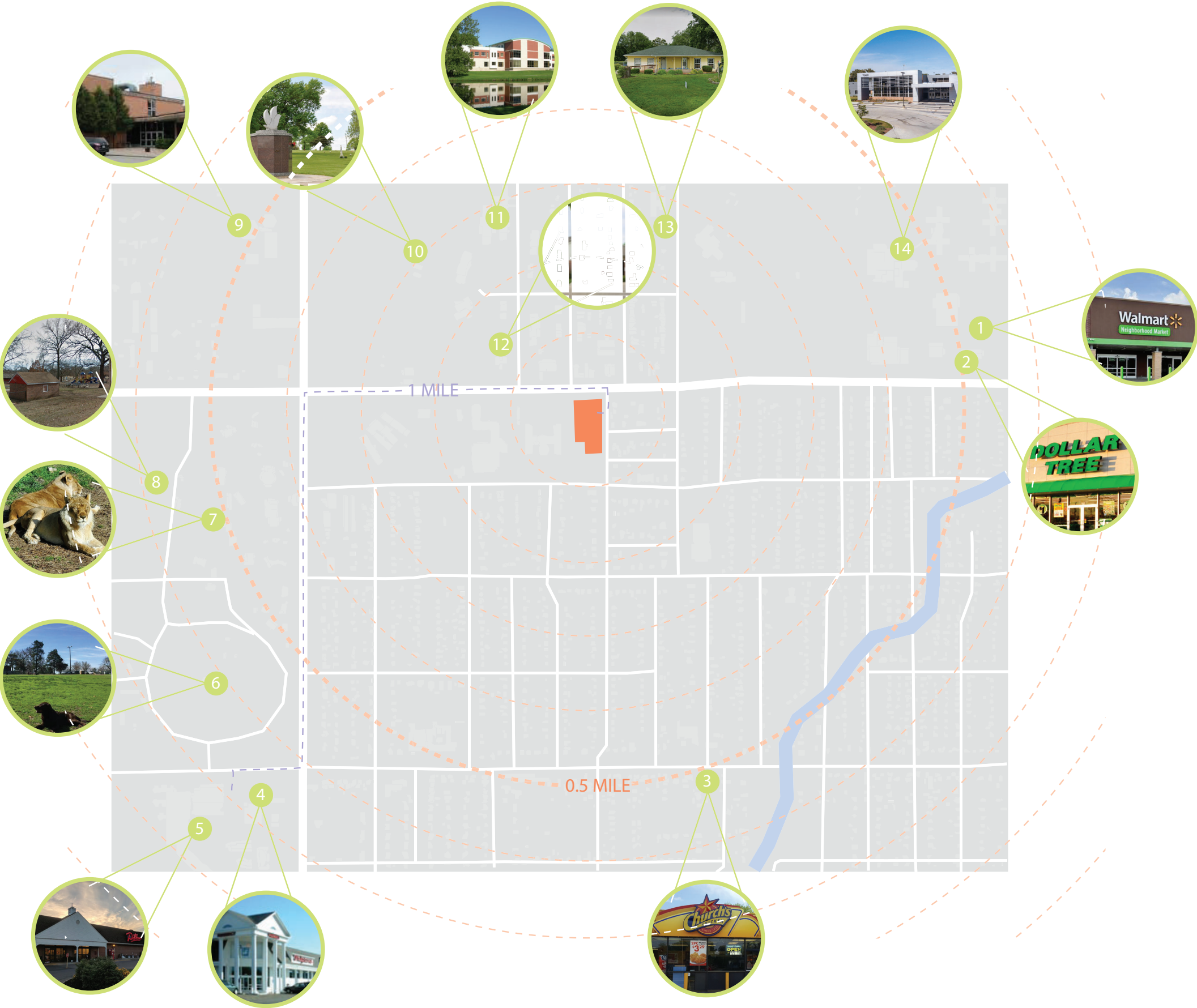
LOCATION: TOPEKA, KS

STUDENT: SAM CARLSON



CONTEXT

- 1 WALMART
- 2 DOLLAR TREE
- 3 CHURCH'S CHICKEN
- 4 WALGREENS
- 5 DILLONS
- 6 HILLS PET NUTRITION BARK PARK
- 7 TOPEKA ZOO
- 8 GAGE PARK
- 9 HAYDEN CATHOLIC HIGH SCHOOL
- 10 MEMORIAL PARK CEMETERY
- 11 FAMILY SERVICE & GUIDANCE CENTER
- 12 COTTON O'NEILS DIABETES CENTER
- 13 BRIGHT CIRCLE PRESCHOOLS
- 14 TCALC



(Google Earth, 2021)

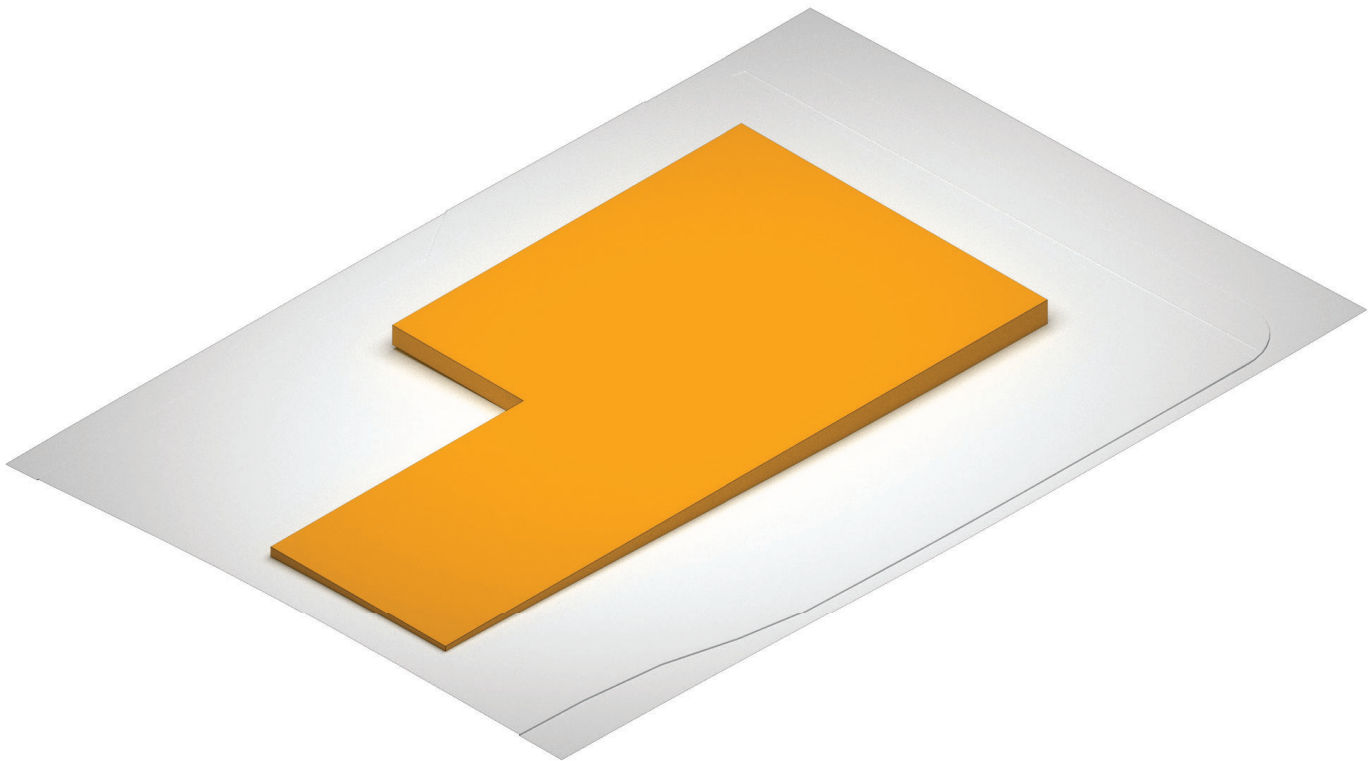
PROJECT SITE

⊕ n.t.s.

OPERATIONAL DIAGRAMS

PLINTH

Embeds mass within site. Creates a secure secondary level and allows for lesser program to live within the earth.

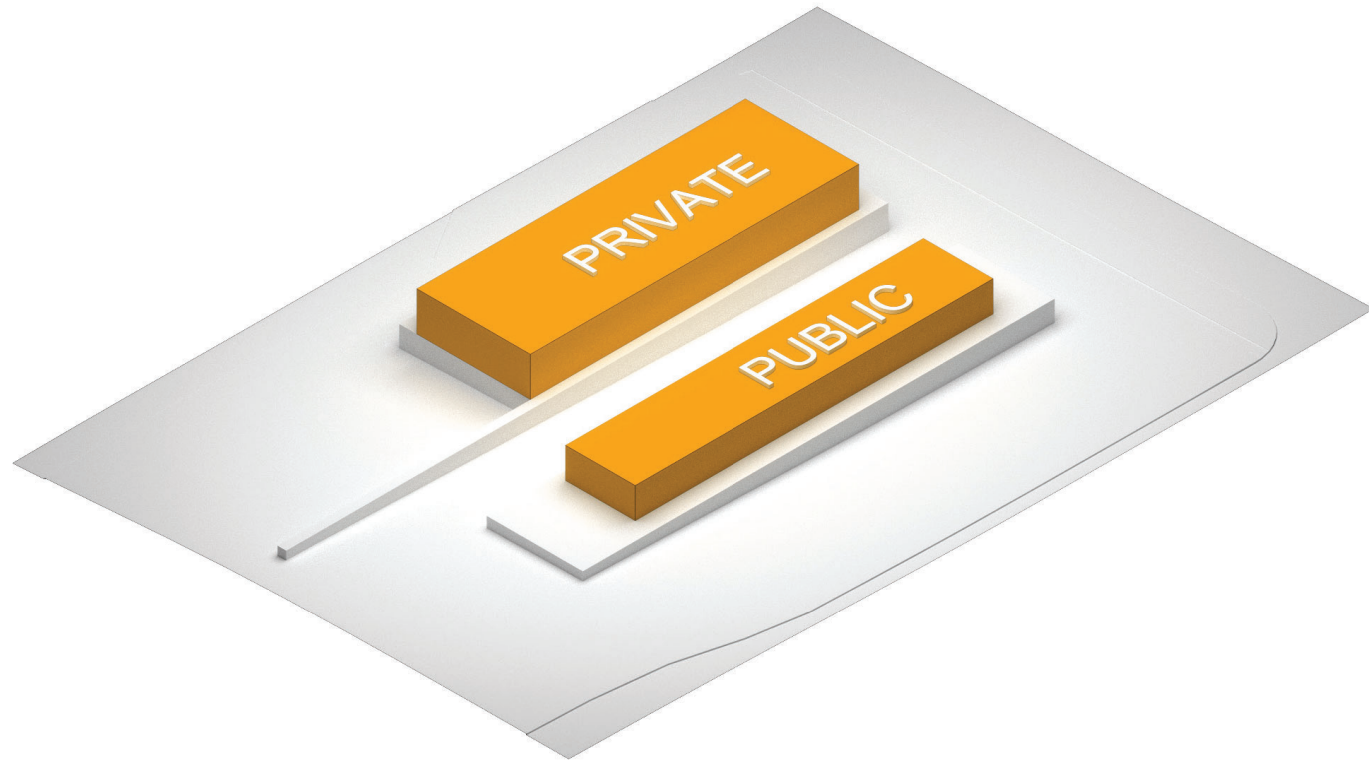


SUBTRACTION

Of the plinth creates separation of residential and support space. Provides ample courtyard space for play and a prominent residence entry.

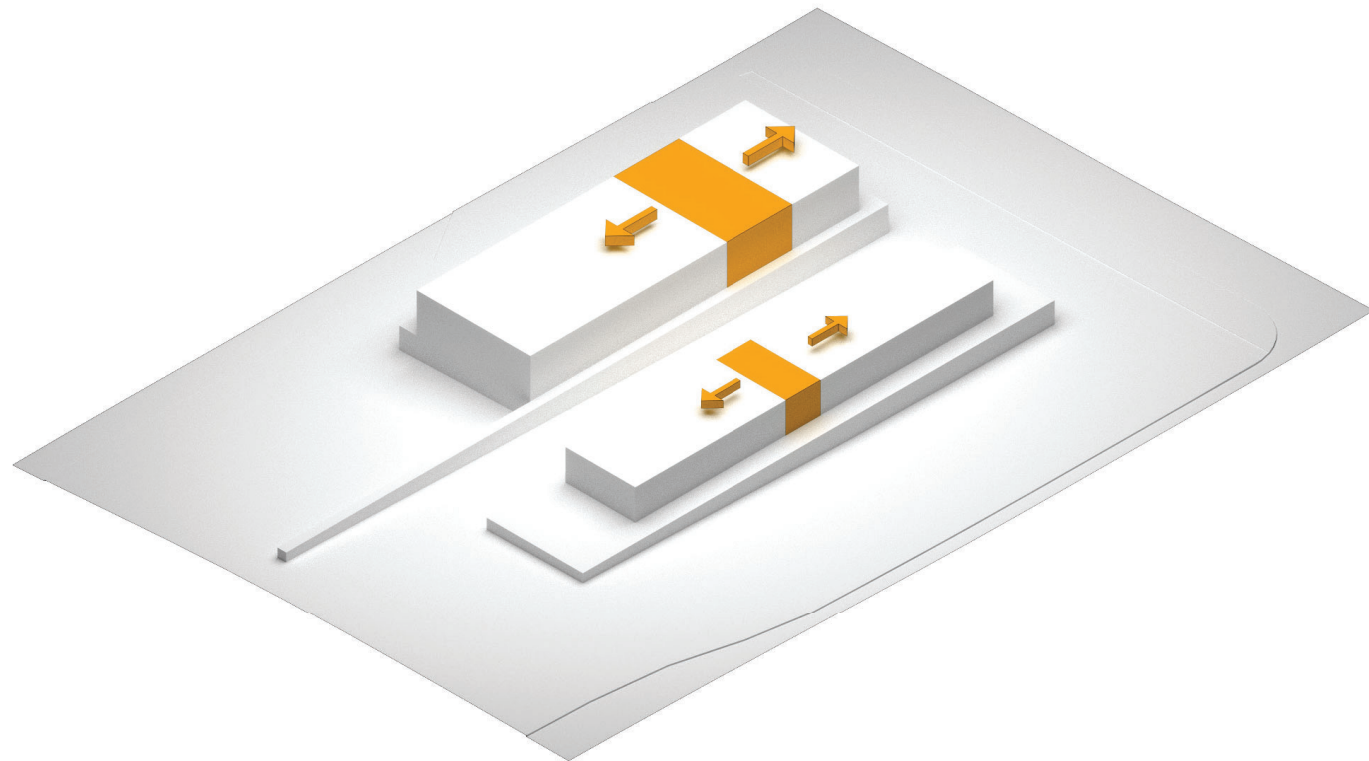


OPERATIONAL DIAGRAMS



BARS

Set on a pedestal provides hierarchy and establishes form boundaries. Separates public program from private territory. Contrasting material type establishes dialogue with plinth.



SPLIT

Bars create a natural point of entry. Establishes interstitial space between program. Allows daycare to operate independently without entry to the primary facility. Separates emergency housing to facilitate undisturbed integration into the community.

OPERATIONAL DIAGRAMS

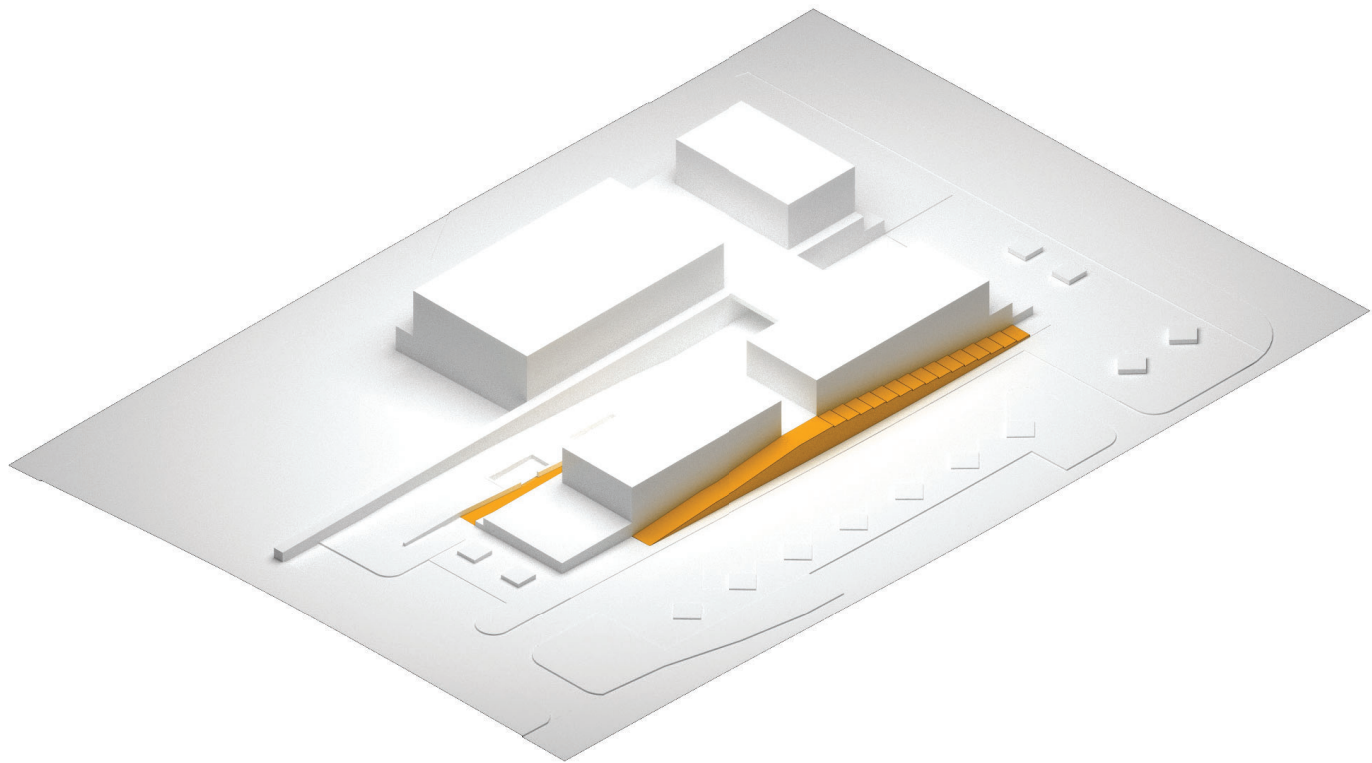
BRIDGE

Allows residences to reach the support bar without being exposed to weather or public. Creates a major point of internal circulation. Provides roof top growing space for larger plants.



CARVED

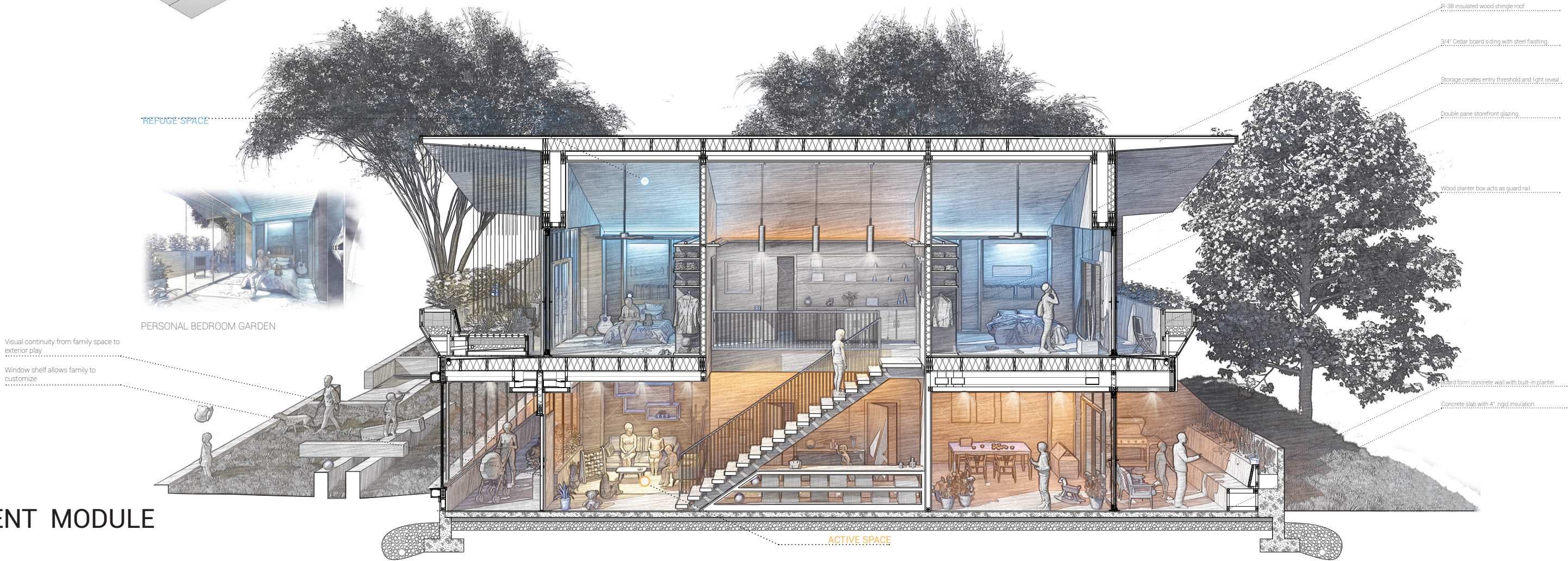
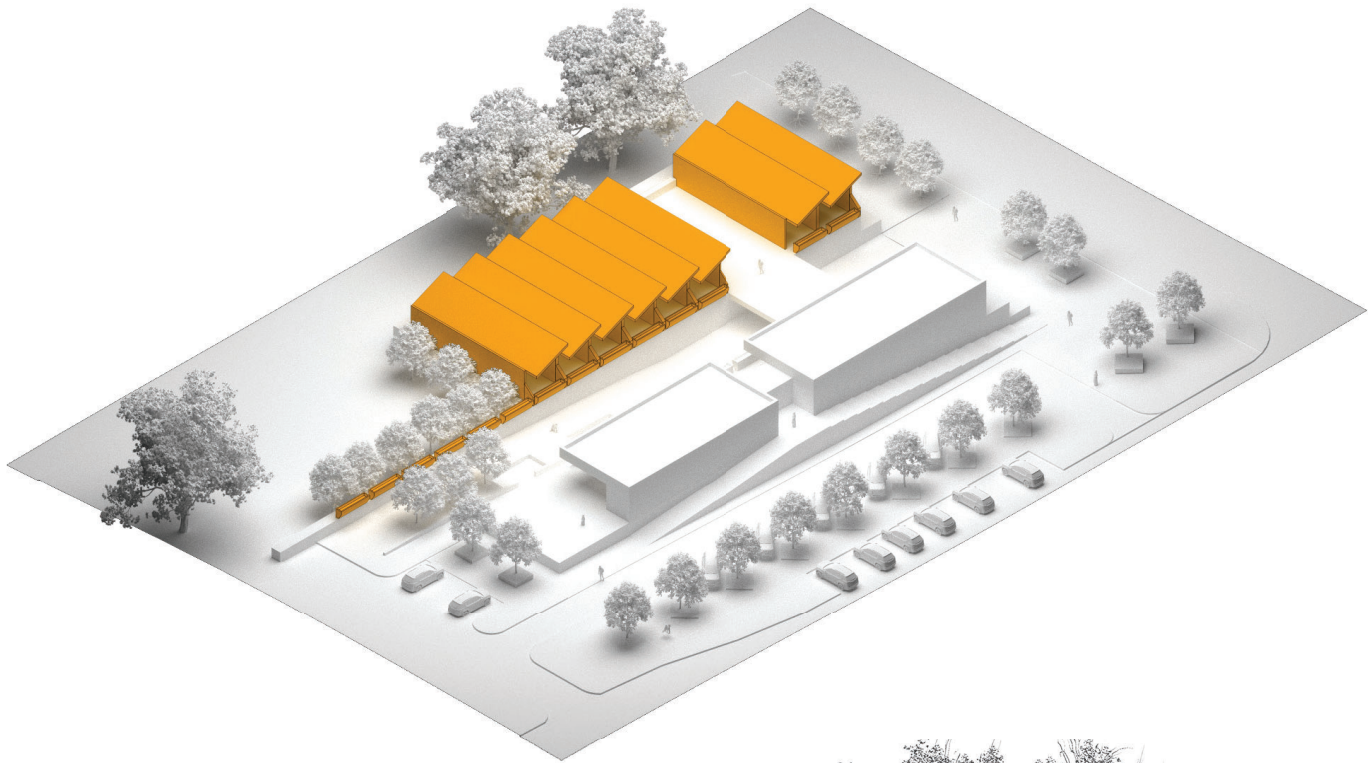
Circulation allow for smooth journey between elevation changes and site conditions. Long sight lines provide secure transition.



OPERATIONAL DIAGRAMS

MODULES

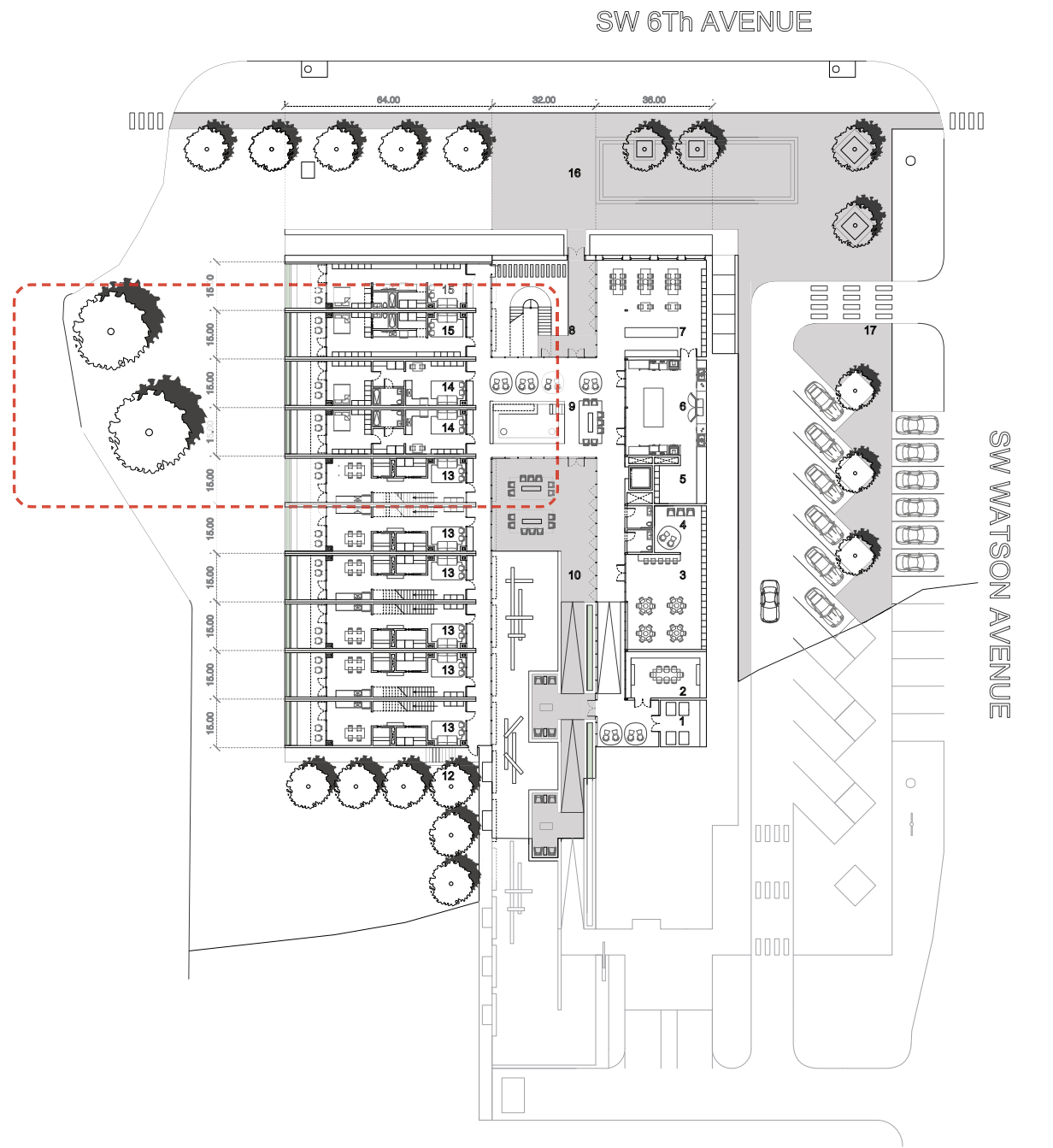
Establish a clear delineation from the non-residential territories. Synchronizes with row house identity; provides ground floor exterior use and secondary floor protection.



APARTMENT MODULE

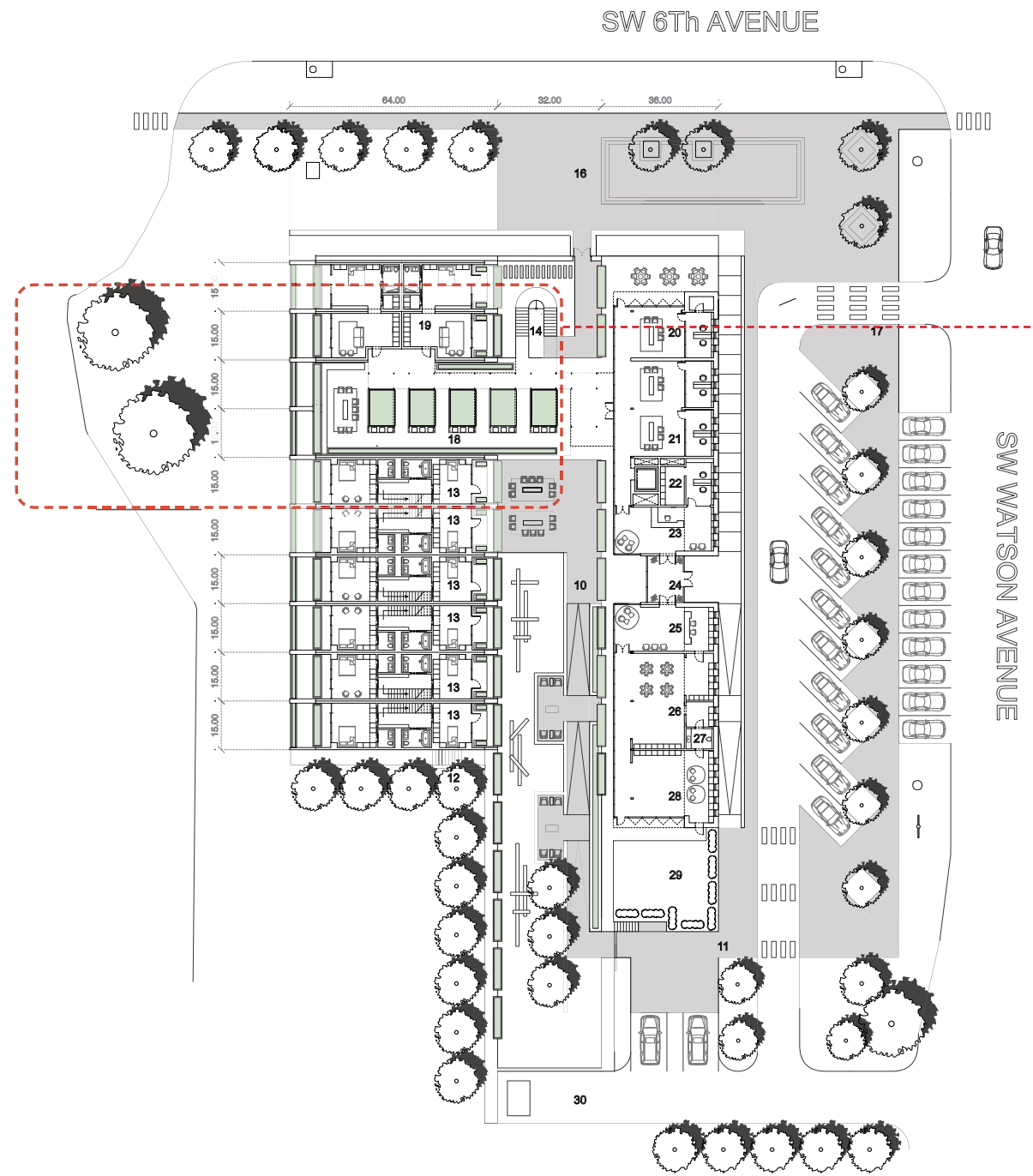
Sam Carlson
Professor Chad Schwartz

PROGRAM LAYOUT



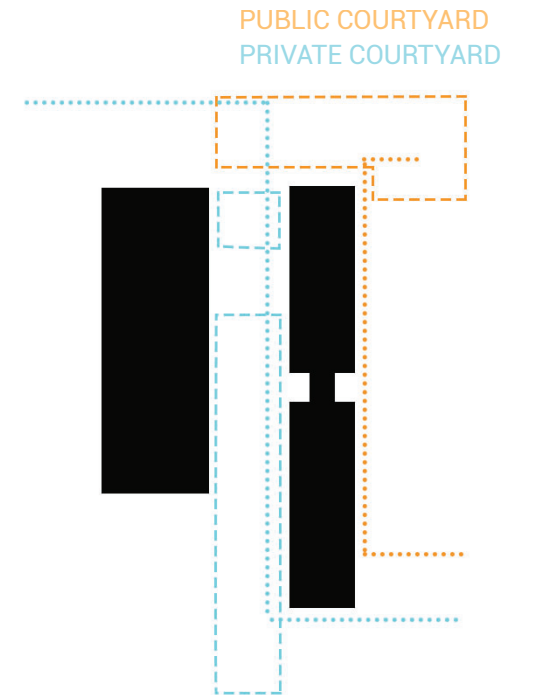
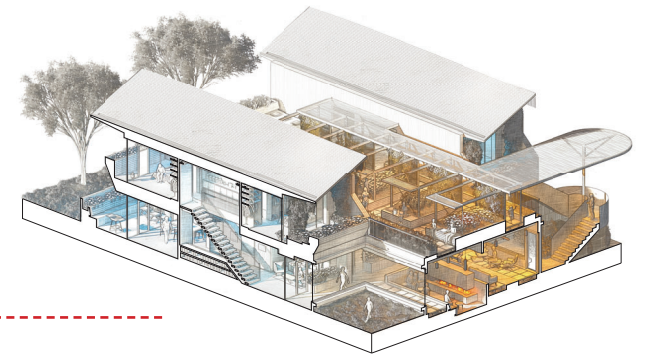
GROUND FLOOR

- | | | | |
|----|----------------------------|-----|---------------------------------------|
| 1. | Mechanical & Storage | 9. | Community Recreation |
| 2. | Conference | 10. | Large Private Courtyard |
| 3. | Children Play | 11. | Drop off Loop |
| 4. | Sensory Space | 12. | Emergency Exit & Mechanical Courtyard |
| 5. | Pantry & Canning Storage | 13. | Two Bedroom Row House |
| 6. | Kitchen & Canning Facility | 14. | One Bedroom ADA Apartment |
| 7. | Dinning & Flex | 15. | Studio Apartment |
| 8. | Small Private Courtyard | | |



2ND FLOOR

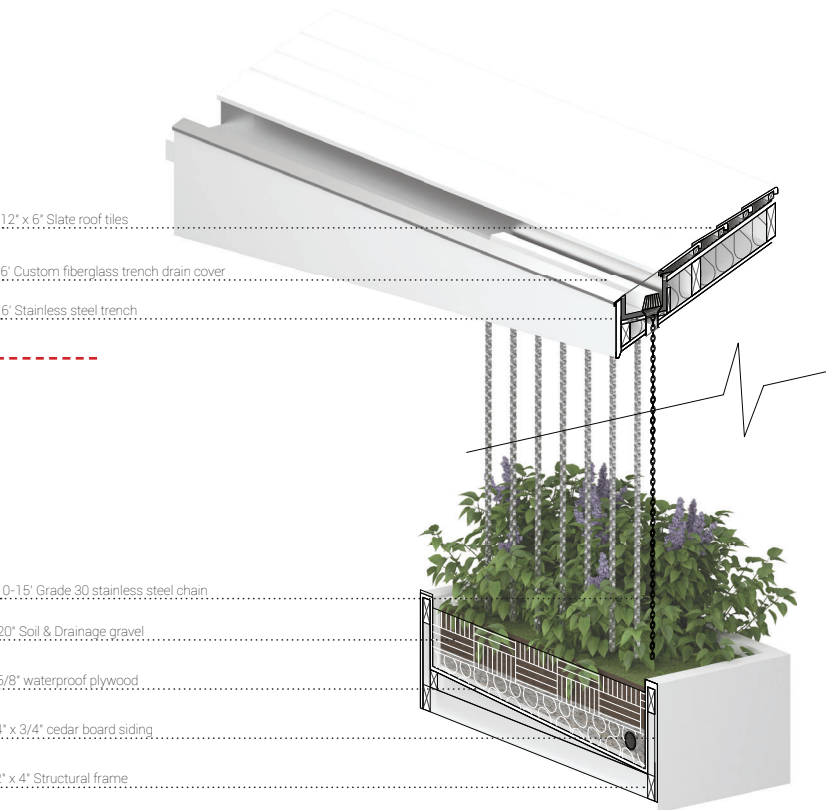
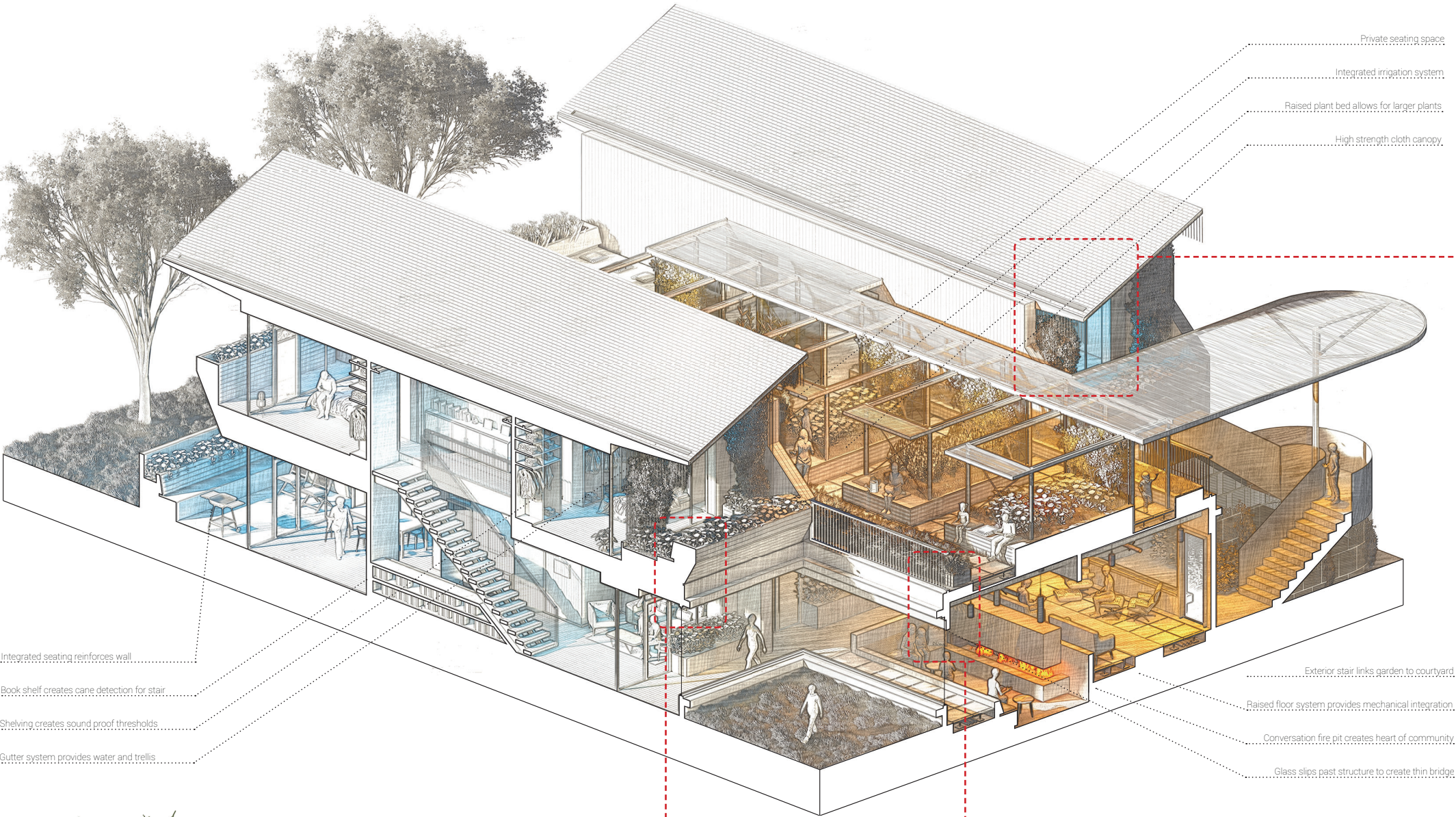
- | | | | |
|-----|----------------------|-----|---------------------|
| 16. | Public Courtyard | 24. | Entry Vestibule |
| 17. | Drive Entry | 25. | Daycare Lobby |
| 18. | Community Garden | 26. | Classroom Space |
| 19. | Emergency Apartment | 27. | Children's Restroom |
| 20. | Nurse Office | 28. | Indoor Play Area |
| 21. | Counseling Office | 29. | Outdoor Play Area |
| 22. | Administrator Office | 30. | Trash and Recycling |
| 23. | Lobby | | |



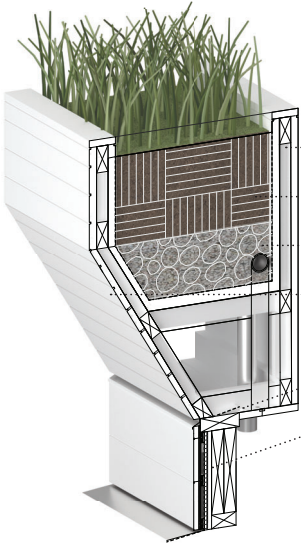
COURTYARDS



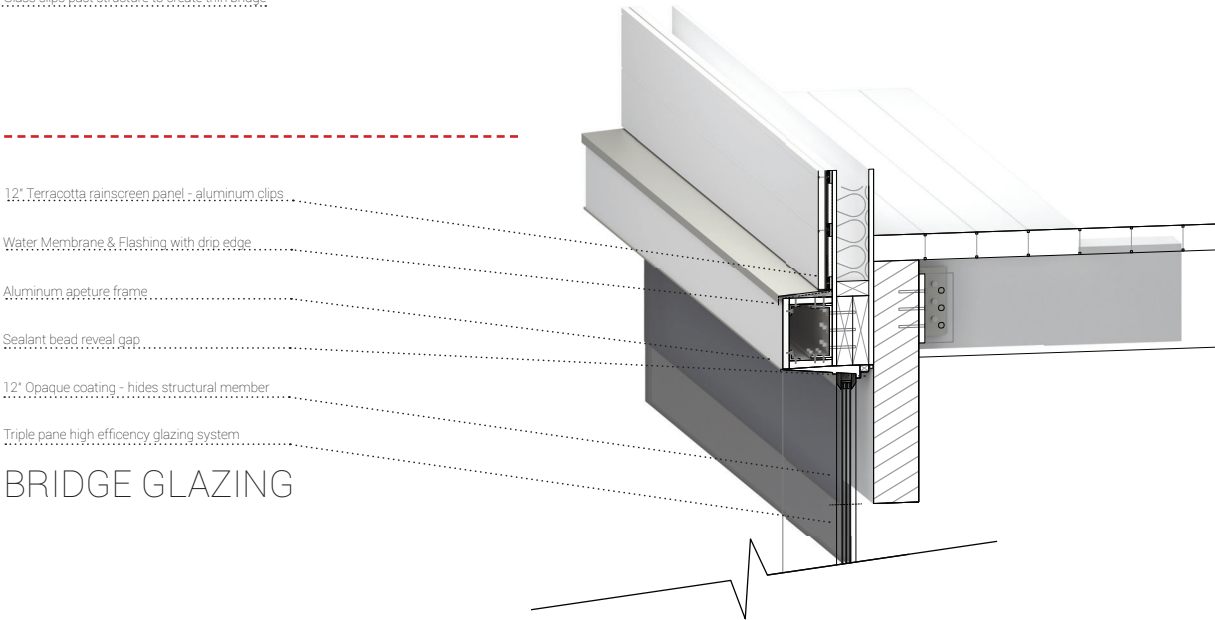
AREA OF FOCUS



RAIN CHAIN PLANT INTEGRATION

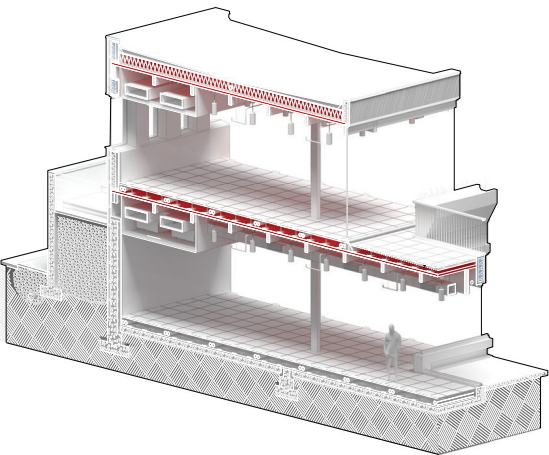
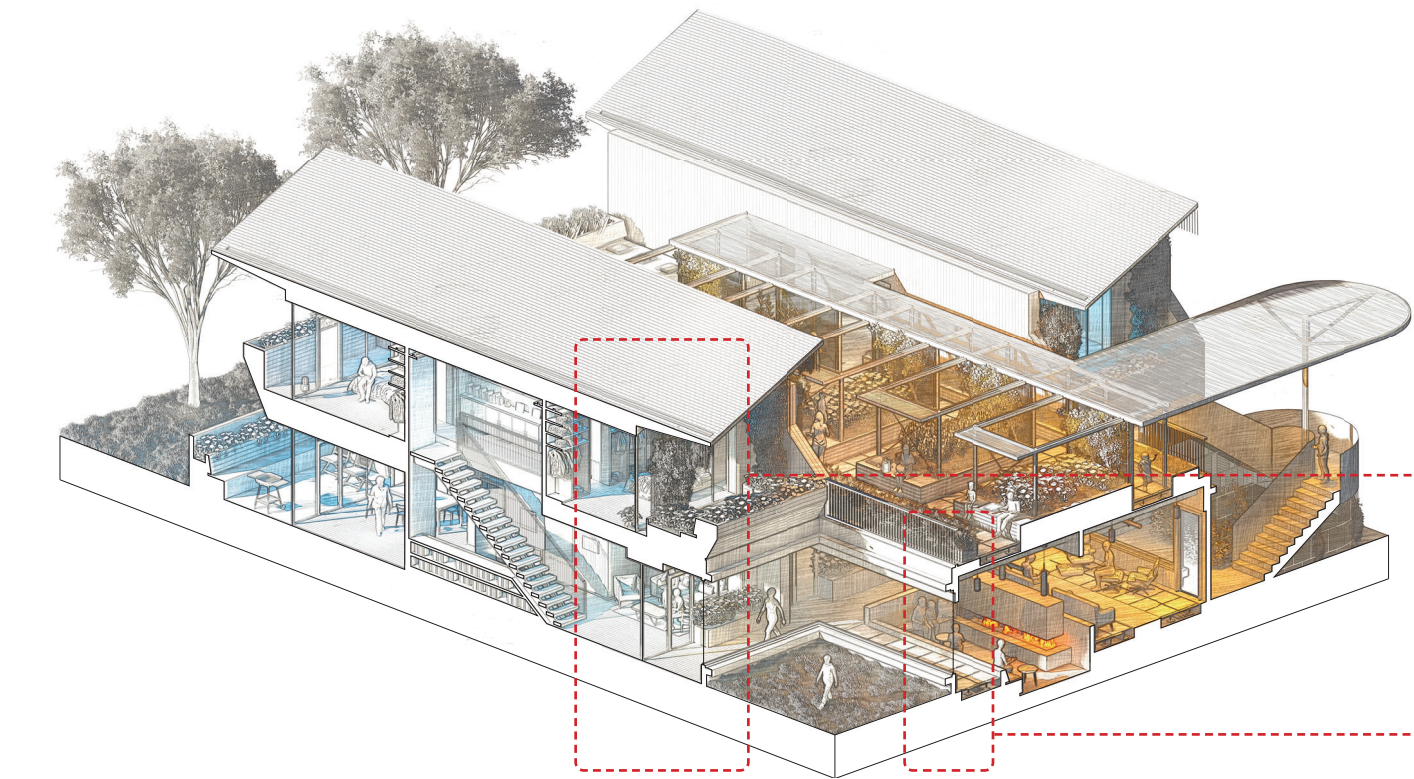


REVEAL DATUM



BRIDGE GLAZING

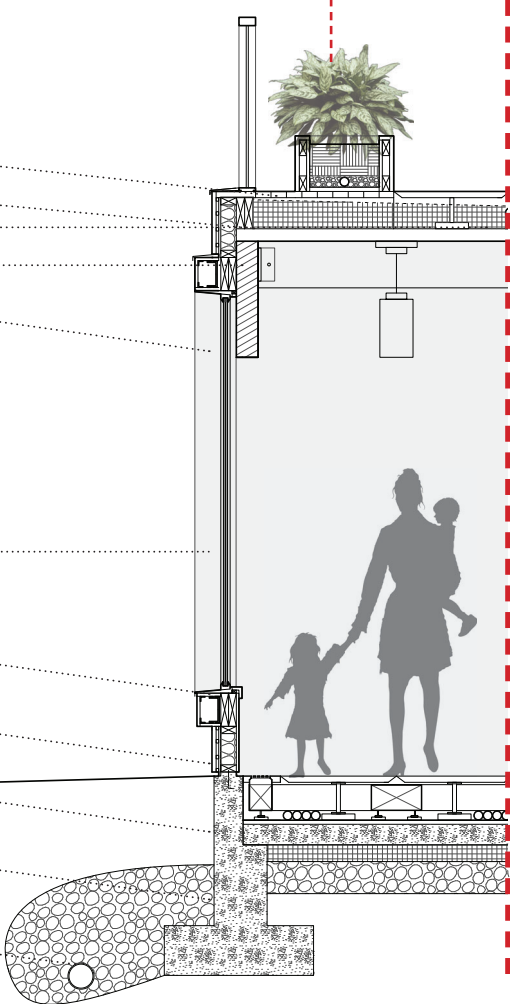
WALL SECTIONS



SUPPORT SPACE

- 10" Raised exterior roof deck
- 8" Spray foam (r-38) with water membrane
- Drainage system - Drain filter
- 28" x 8.5" x 35" Glulam beam - exposed with 3" wood plank decking
- 12" Reflective glazing strip

- Triple pane storefront glazing
- Flashing - aluminum sill cap
- Foundation anchor - stud wall
- Concrete slab with 4" rigid insulation
- 8" Gravel Foundation Base
- 4" PVC Foundation Drain

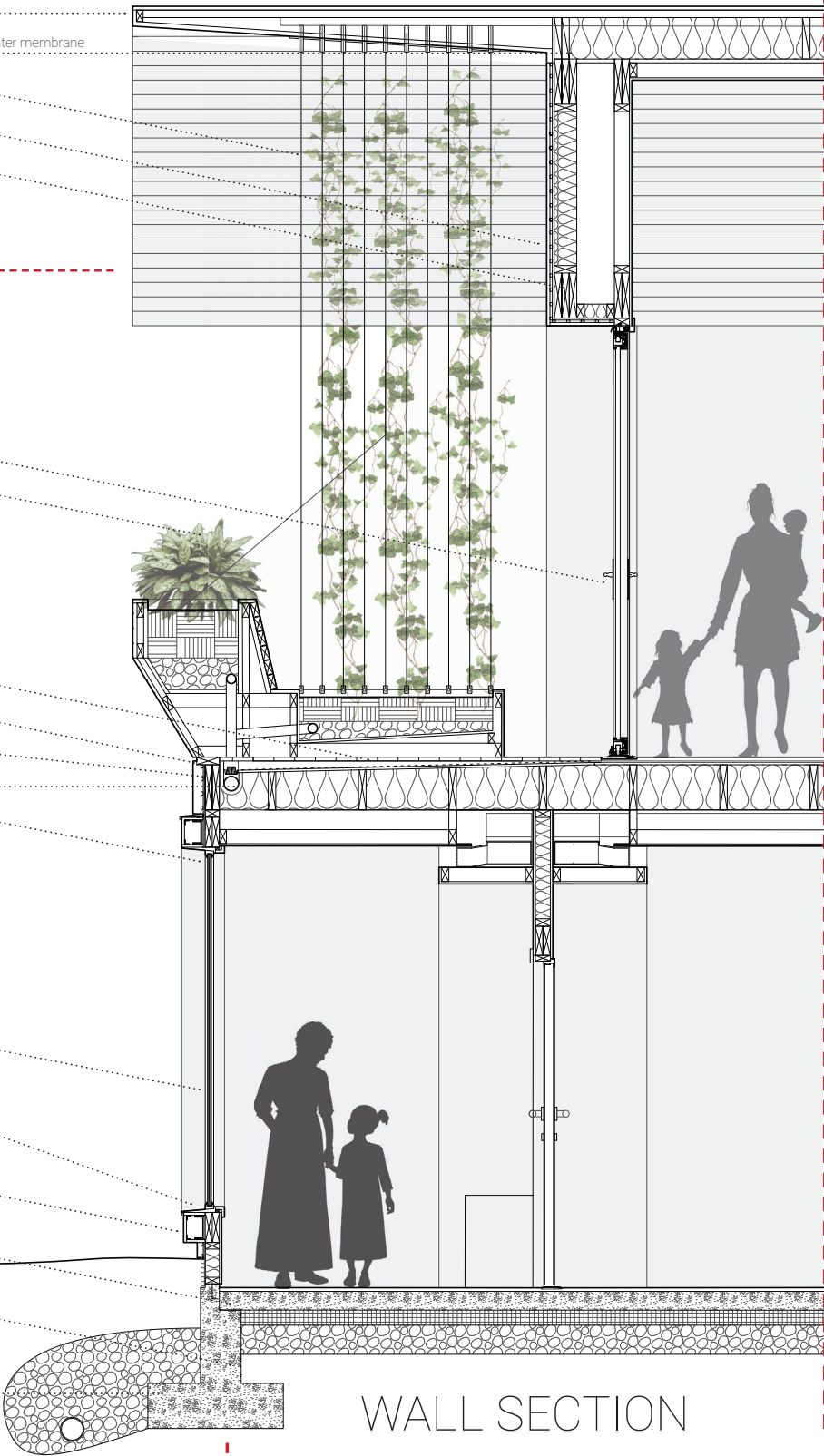


- 12" x 6" Slate roof tiles
- 12" Batt (R-38) roof insulation - ventilation cavity - water membrane
- 1/4" Stainless Steel rain chain / plant trellis
- 3/4" Cedar board siding with steel flashing
- 6" Batt Insulation & 2" Rigid

- MANKO Series 135i operable glass door
- Wood planter box acts as guard rail

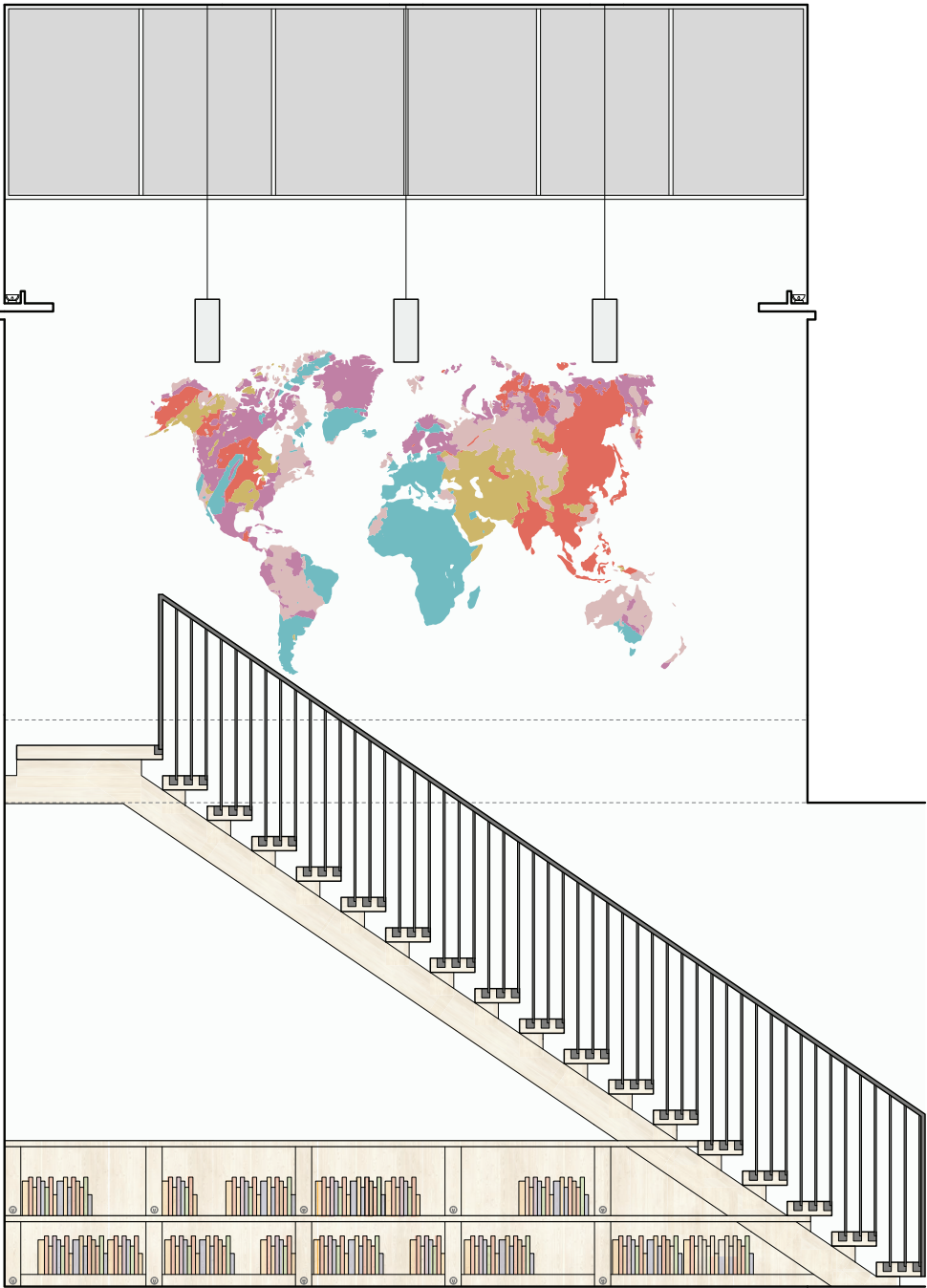
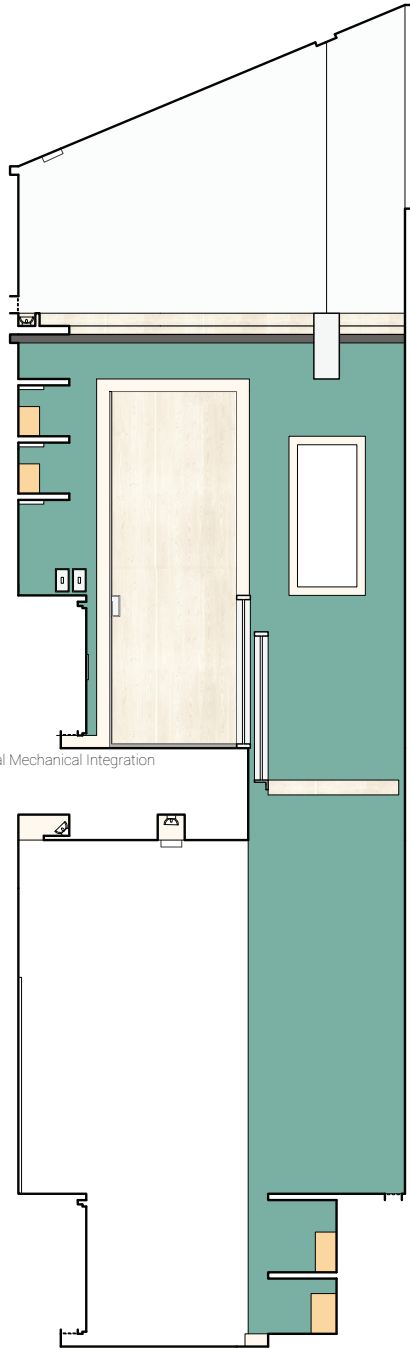
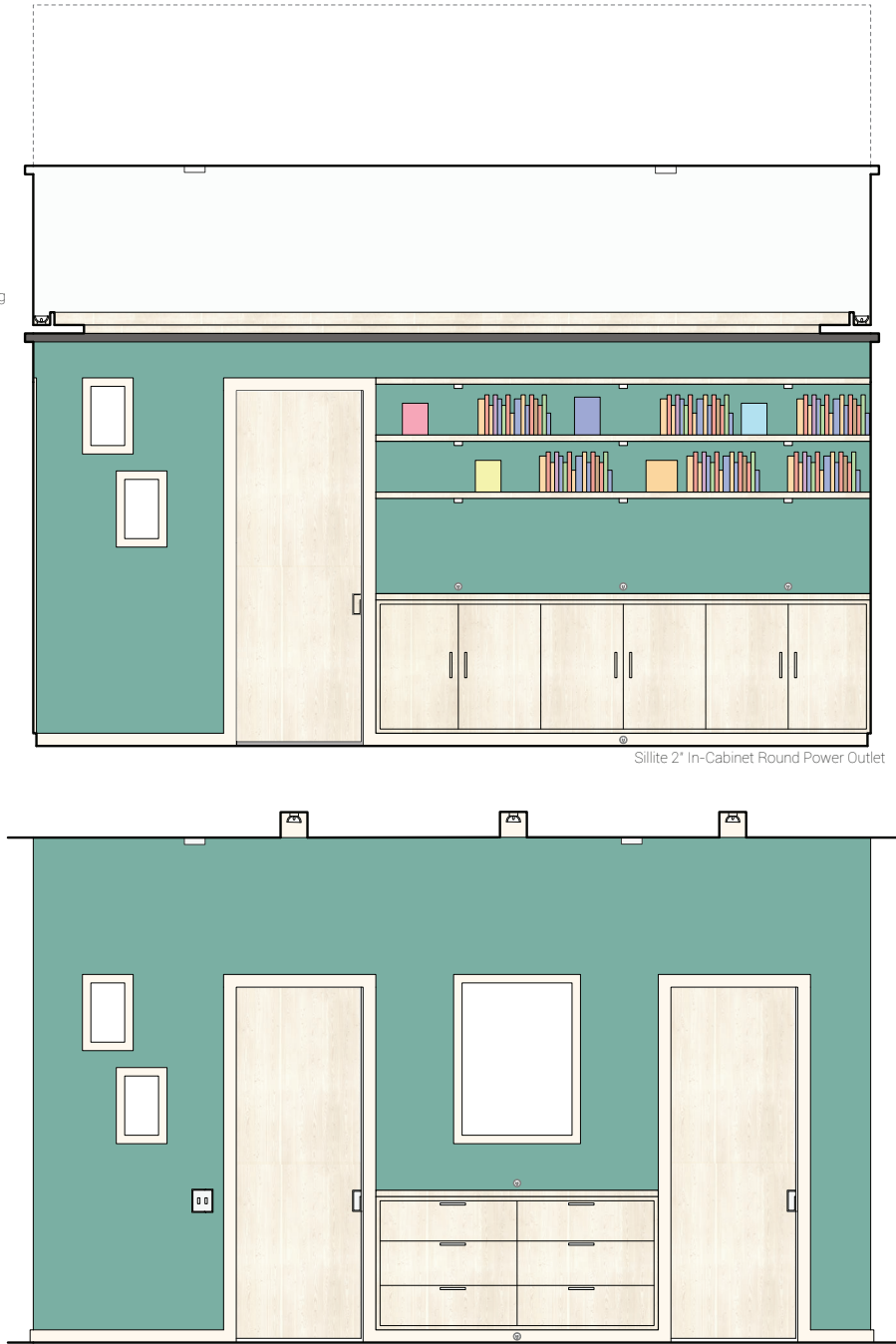
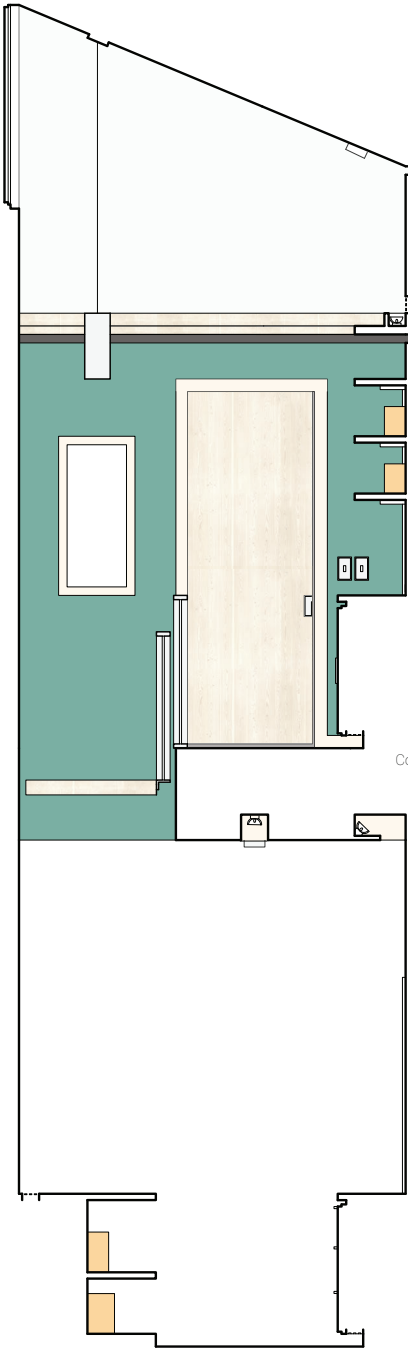
- 1/4" Slope raised exterior deck
- Ceramic Paneling Rain Screen & Aluminum clips
- 2" x 4" angled to support raised deck
- 6" drainage pipe with drain cover
- 12" Reflective coat along window datum

- Triple pane storefront glazing
- Aluminum aperture frame
- 8" x 2" Steel c-channel mounting bracket
- Concrete slab with 4" rigid insulation
- 8" Gravel Foundation Base
- 36" Bellow frost foundation



WALL SECTION

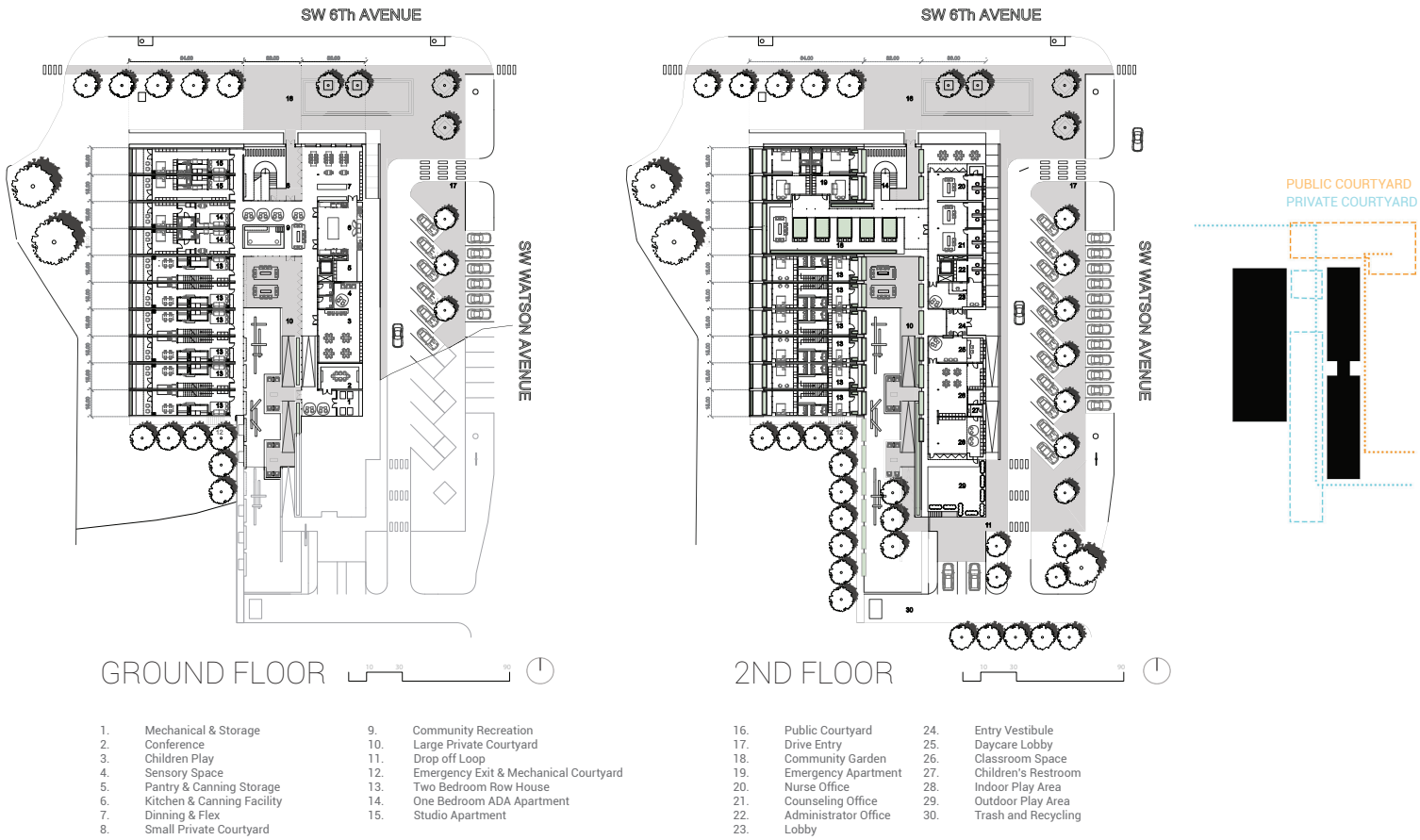
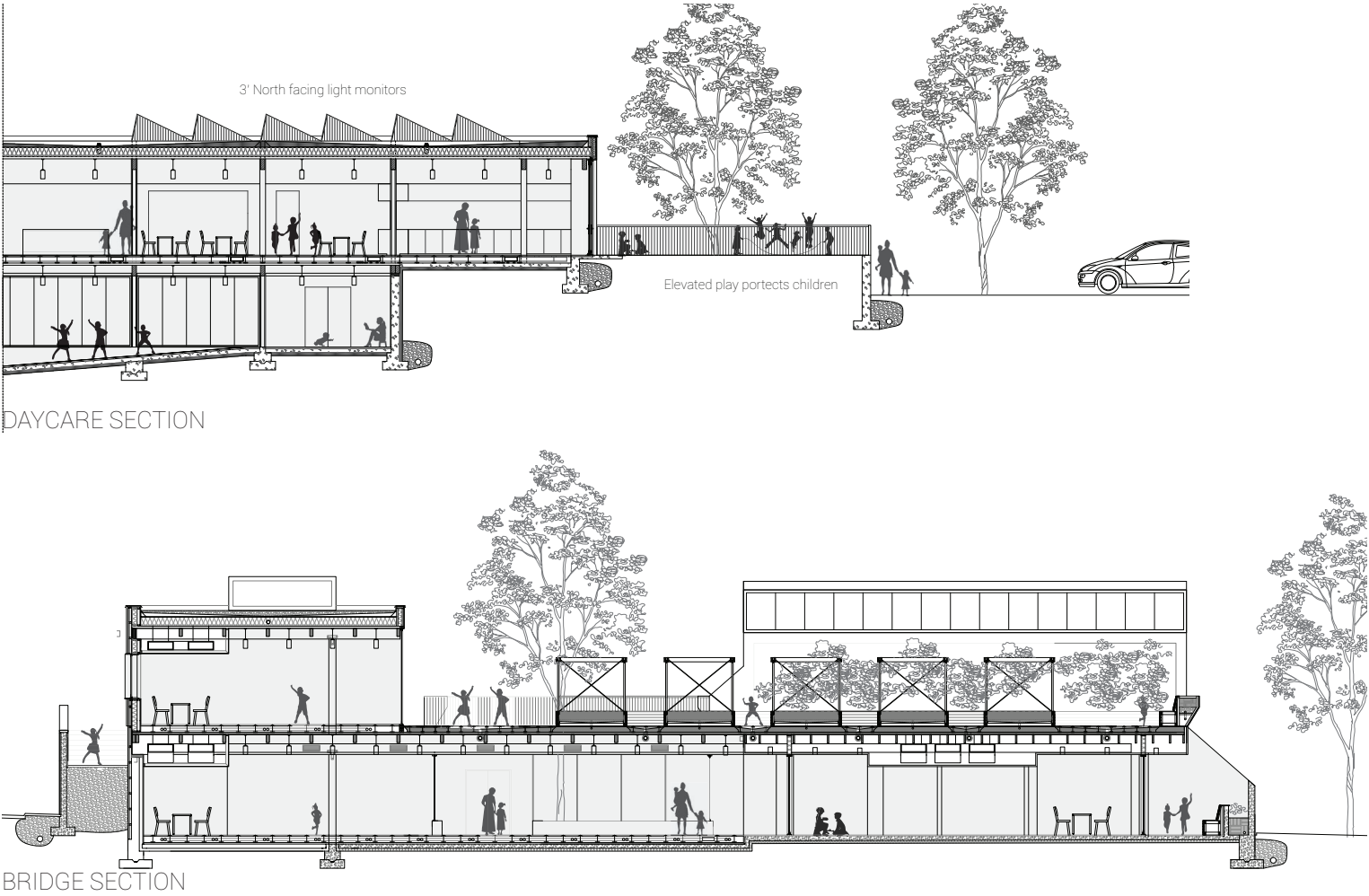
APARTMENT CIRCULATION



Co-Housing Facility For Domestic Abuse Survivors

Sam Carlson
Professor Chad Schwartz

Daycare & Public Realm



At the corner of SW 6th Avenue and SW Watson Avenue looking at the public plaza. Creates a space for community events and engagement.



Depicts the primary entry for residence. Emphasizes the axis of the composition with a playful and secure environment.

Co-Housing Facility For Domestic Abuse Survivors

Sam Carlson
Professor Chad Schwartz

CONCLUSION

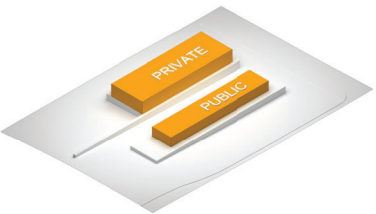
OPERATIONAL DIAGRAMS



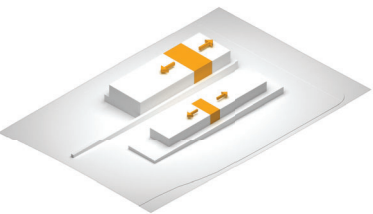
PLINTH
Embeds mass within site. Creates a secure secondary level and allows for lesser program to live within the earth.



SUBTRACTION
Of the plinth creates separation of residential and support space. Provides ample courtyard space for play and a prominent residence entry.



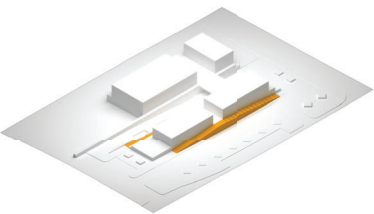
BARS
Set on a pedestal provides hierarchy and establishes form boundaries. Separates public program from private territory. Contrasting material type establishes dialogue with plinth.



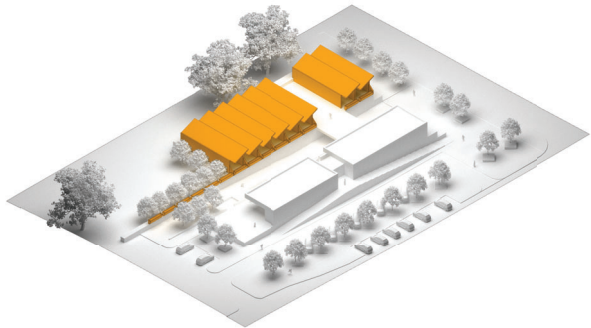
SPLIT
Bars create a natural point of entry. Establishes interstitial space between program. Allows daycare to operate independently without entry to the primary facility. Separates emergency housing to facilitate undisturbed integration into the community.



BRIDGE
Allows residences to reach the support bar without being exposed to weather or public. Creates a major point of internal circulation. Provides roof top growing space for larger plants.



CARVED
Circulation allow for smooth journey between elevation changes and site conditions. Long sight lines provide secure transition.



MODULES
Establish a clear delineation from the non-residential territories. Synchronizes with row house identity; provides ground floor exterior use and secondary floor protection.

