



TOPEKA DOMESTIC VIOLENCE CO-HOUSING FACILITY

ABIGAIL HUTCHINSON | ADS 5 | FALL 2021 | PROFESSOR CHAD SCHWARTZ

Since the start of the pandemic, there has been a rise in reported domestic abuse. As survivors come forward to ask for help, it's crucial that shelters support the long and short term needs of people seeking refuge and independence. This design supports the **rehabilitation** stage of the healing process, while also keeping the traditional needs of a domestic violence shelter. By providing autonomy and diversity of experience, each family has a space to heal and an **abundance of choice so that their space fits their position along their path to healing**. This design promotes empowerment and making one's own decisions; reclaiming the autonomy and dignity destroyed by abuse.



COMMUNITY KITCHEN



SHARED PORCH SPACES



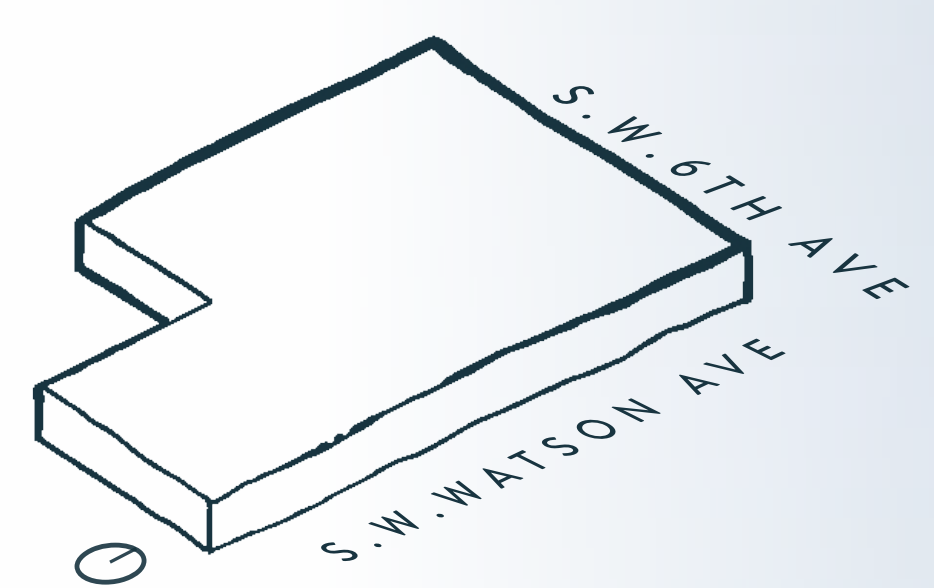
STORY CORNER



PICKUP AREA



ELEVATION



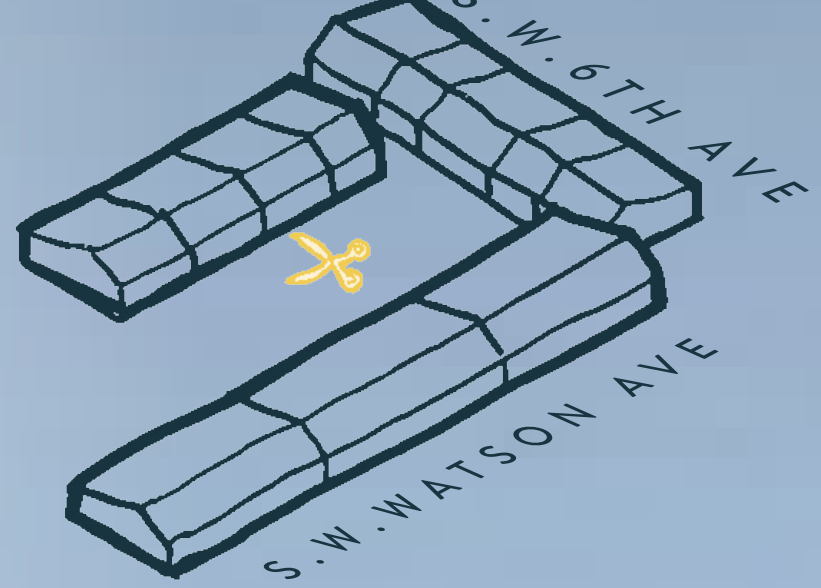
MASS

Start with the site extruded as mass. Protects everything inside the facility and exercises control over the entire site. This **needs refinement** as it does not emphasize autonomy.



DIVIDE

Create **autonomy within program blocks**. This also allows residents to live independently of the staffed spaces in the community house.



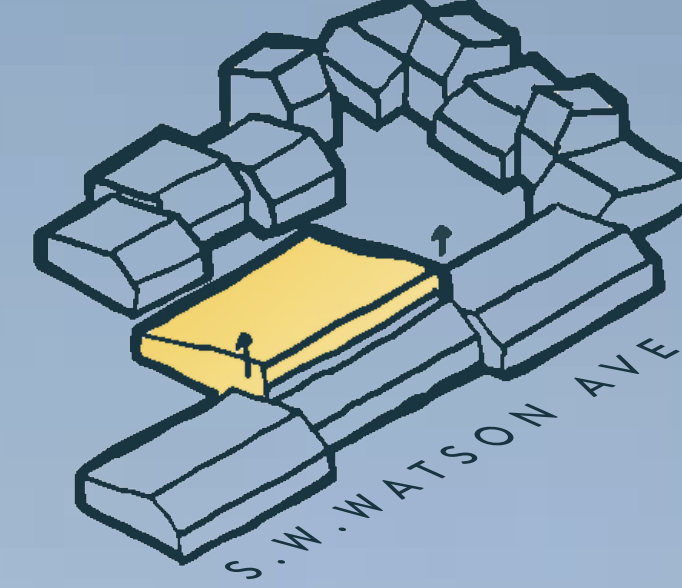
INDIVIDUALIZE

Create separation between dwelling units for families to **empower residents**, letting them establish a routine; relax and eat together; and strengthen parent-child bonds.



SHIFT

Spaces are shifted to create **moments of interaction upon entry and exit**. Shared porch spaces give opportunities for smaller communities to form and provide views to the central yard space.



LIFT

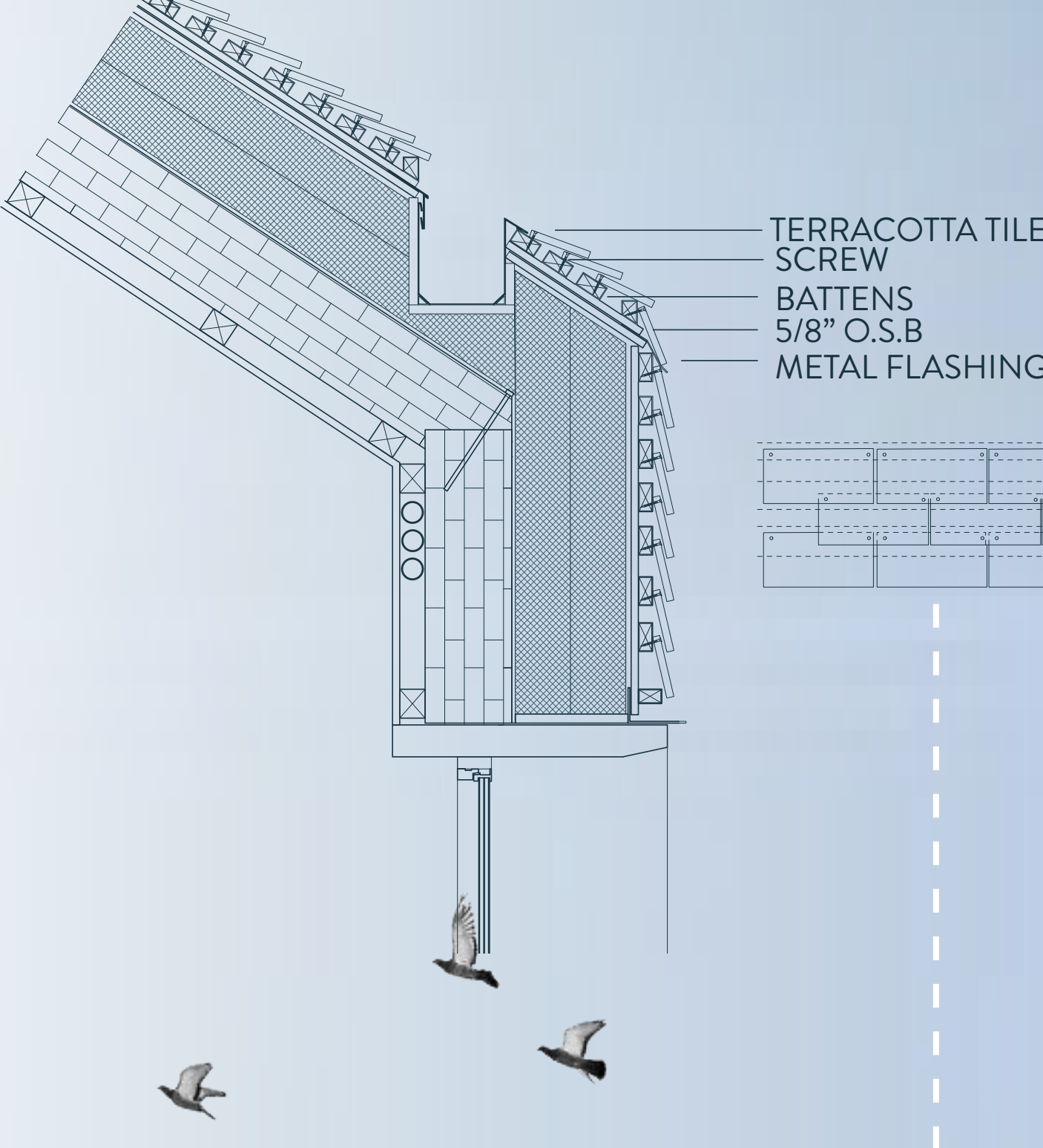
The community house volume pops up to indicate its importance from the elevation and allow for light and **abundance** of space.



RETHINKING SHELTER

The traditional needs of a domestic violence shelter provide safety, protection, medical assistance, security and housing. This is typically sufficient for short term and emergency housing, but lacks in providing avenues for the next steps of rehabilitation. Moving away from the isolated, and secretive nature of existing women's shelters, we make room for experiences dedicated to rehabilitation. With a co-housing model, the fortress mentality can be removed and the architecture can become an energetic force for healing and community connection.

MATERIALITY WRAP + HIDDEN GUTTER



ROOF (FROM OUTSIDE TO INSIDE)

STANDING SEAM METAL ROOFING
UNDERCLOAK SLIDER FASTENERS
5/8\"/>

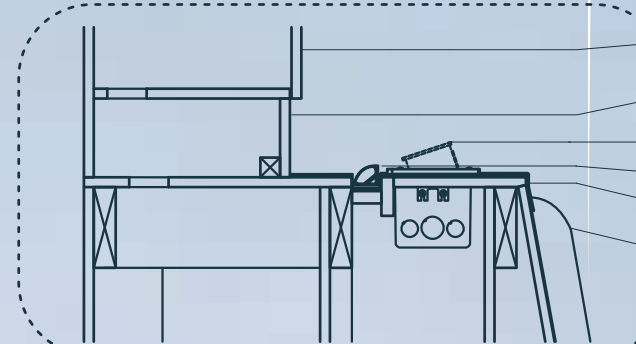
WALL (FROM OUTSIDE TO INSIDE)

STANDING SEAM METAL SIDING
UNDERCLOAK SLIDER FASTENERS
EVODRIVE COMPACT SLIDING MOTOR
PERFORATED COATED ALUMINUM PANELS
METAL FLASHING
ALUMINUM WINDOW DOUBLE GLAZED
5/8\"/>

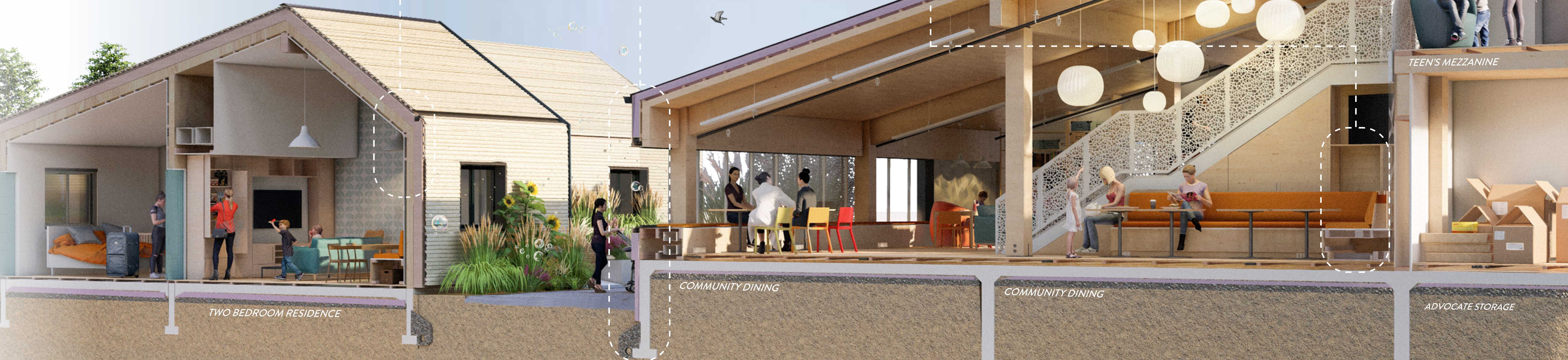
FLOOR (FROM INSIDE TO OUTSIDE)

FINISH WOOD FLOOR OVER INSULATION
CONCRETE SLAB
VAPOR BARRIER
3\"/>

SEATING WITH INTEGRATED LIGHTING AND OUTLETS



GROUND FLOOR PLAN



TWO BEDROOM RESIDENCE

COMMUNITY DINING

COMMUNITY DINING

ADVOCATE STORAGE

TEEN'S MEZZANINE