

## arch\_weekly note



Images courtesy of Dept. Head Knox.

The summer is blowing by fast. It is hard to believe that 4th of July, the All-Star Game, and other summer traditions are already past. With all the preparation still needed to move to APD West, a little slow motion would be nice. Anyway, Richard and his crew have been busy cutting up red boxes to turn them into free-standing side tables that will go with the standard drafting tables. You will be able to put your computers on them and free up the drafting table for drawing and models. We are working with very tight dimensions so that we all fit into APD West so the tables are 42 inches by 21.5 inches. Two 24-inch monitors will just fit. The two pictures (above and below) show the completed table and also the stacks of recycled stock cut and ready to be shipped to the new space for assembly.



In other work, they have taken the slate down from the Pierce Atrium (see pic below) and are taking down the suspended cable tracks in the studio to reuse in APD West. Seaton East is starting look very empty.



In just one month we will be starting a challenging but exciting adventure. Given space restrictions, studio in APD West will not be like it was here. We will not be able to do

some of the things we have been doing, like super large models, but we are an amazingly creative bunch and I have full faith that we will emerge stronger. I also think we could actually have a lot of fun out there (lots of room outside to toss a Frisbee, etc.). To mark this new adventure, we are going to combine our Architecture Forum with the annual AIAS Fall Picnic by having a picnic out at Tuttle the first Friday after studio (8.28). Please plan on joining us.

Have a great week.

Matthew Knox AIA  
Professor and Department Head

## arch\_preferencing + move

Third through fifth year studio preferencing will take place soon! Studio descriptions will be emailed out and posted on K-State online on Monday, August 3rd along with studio preferencing forms, with the exception of fifth year descriptions being posted July 27th. Completed forms will be due via email on Friday, August 14th at noon. Studio rosters will be posted online and at APDesign West (the Swing Space/the old Sykes Call Center at 5970 Executive Court, Manhattan, KS 66503) on Friday, August 21st. Please be sure to check your email on these dates for all the information you need.

Students will be able to move into studio at APDesign West (the Swing Space/the old Sykes Call Center at 5970 Executive Court, Manhattan, KS 66503) beginning August 21st through August 23rd between 8:00 am and 8:00 pm. Two ATA buses will be running to and from campus during these days and times providing transportation. Check the [APDesign West website page](#) for updates.

Classes will begin on August 24th. If you have questions about studio preferencing or moving in, please call us at 785-532-5953.

## arch\_studio

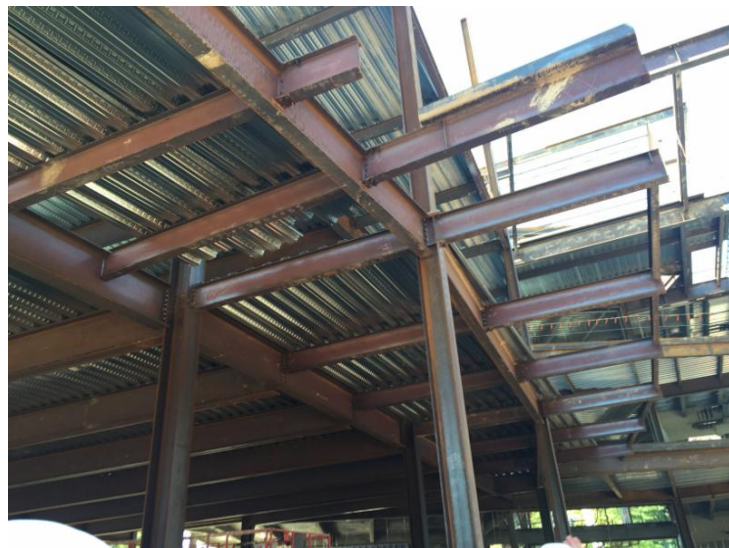




The Manhattan section of the ADS V studio is in crunch mode, with less than two weeks remaining in the course. The students are currently working on their final design development documents, which include wall sections and details. Luckily, the students have had a lot of help with devising the construction strategies for their projects. Alan Harshbarger from US Stone visited the studio several weeks ago, to talk to students about exterior limestone cladding, and later led the students on a tour of their stone finishing plant in Herington. Later, Bill Sims and Kelly Foster of McPherson Contractors took students on a tour of the College of Business Administration building, currently under construction on the east edge of K-State's campus. The building was in several phases at once, with the north end

almost completely dried-in while foundations were still being poured towards the south, so everyone was able to experience the building construction sequence. Finally, students have had a number of one-on-one drawing review sessions with local architects: Casey Culberson from Action Pact and Cameron Tross, Garric Baker, and Dana Williamson from Bruce McMillan Architects. Bruce Wrightsman also came in to help guide students structurally.

These outside advisors have been immensely helpful, aiding student understanding of a wide range of issues, and both the students and myself would like to thank them all for their time and advice. Most importantly, everyone has a new perspective on the process of design materialization. Architecture is more than a general desire; architects should be involved in every decision down to the level of details, which themselves can and should reinforce overall design ideas.



As professor of the course, having students closely examine building materials, design details, and construction is immensely rewarding. We have covered a lot of ground in this short semester, and I sincerely hope the course will inform everyone's future design work, both academic and professional.

- Prof. Todd Gabbard



Images courtesy of Brianna Grimm, fourth year architecture student.

## arch\_committees

We still have spots available! Would you like to serve as a student representative on an APDesign Committee and be a voice for your student body? It is a great way to get involved, network and serve the department and college. [Click here for a list of spots we are needing to fill.](#)

If you are interested, please email [architecture@ksu.edu](mailto:architecture@ksu.edu) with your name, year level and the committee you wish to serve on no later than August 3rd.

This is first come first serve.

## arch\_announcements

The faculty retreat will be held Tuesday, August 18th at the Manhattan Country Club Flint Hills Room. An agenda and schedule will be sent out soon.

Please find the faculty meeting schedule attached [here](#) for the 2015-16 academic year.

Fourth and fifth year students\_ Do you have photos of your semester and summer abroad or on internship? Dropbox or email them to Kari Lindeen at [klindeen@ksu.edu](mailto:klindeen@ksu.edu) to use at Architecture Evening, September 28th!



JAE, the *Journal of Architectural Education*, is calling for paper submissions for their 70th volume, which will be a non-themed issue. The deadline to submit is August 1st. Click on the photo above for submission details.

## arch\_upcoming events

### JULY

27 Fifth year studio descriptions available

### AUGUST

3 Studio descriptions available

14 Studio preferencing forms due

17 APDesign Faculty/Staff Meeting

18 Faculty Retreat @ MCC Flint Hills Room

21-23 Studio move-in dates @ APDesign West between 8:00 am and 8:00 pm

24 K-State fall term begins

24 APDesign College Photo @ 4:00 pm Forum Hall

24 APDesign College Forum @ 4:30 pm Forum Hall, BBQ after

28 Architecture picnic w/AIAS @ 5:00 pm Cottonwood Shelter at Tuttle Creek Park


### SEPTEMBER

4 Groundbreaking Ceremony for Seaton Hall @ 10:00 am

25 APDesign Scholarship Golf Tournament at MCC

25 Architecture Evening @ 7:00 pm Alumni Center Banquet Room C

211 Seaton Hall, Manhattan, KS | 785.532.5953  
architecture@ksu.edu  
<http://apdesign.k-state.edu/arch/>

 Like us on Facebook!

 Design Make blog

 Small Town Studio blog