

APDesign E-News

10.19.2015



THE COLLEGE of
ARCHITECTURE, PLANNING & DESIGN // K-STATE



Students hard at work with Associate Professor Nathan Howe and Victor L. Regnier Distinguished Visiting Chair, Jay Siebenmorgen

MOCK INTERVIEWS TODAY

Please welcome the following firms to the K-State Campus who will be participating in Mock Interviews today:

BNIM
BVH Architects
City of Manhattan
Corgan
Dewberry
DLR Group
Flint Hills MPO- RCP
Gensler - Dallas
Helix Architecture + Design
Hoefler Wysocki
Holland Basham Architects (HBA)

EVENTS & DEADLINES

APDesign Events

OCTOBER

Thru - Oct. 23: Chang
Gallery - Study Abroad
Exhibit

19 Mock Interviews, K-
State Alumni Center

21 APDesign
Faculty/Staff Meeting

Hollis & Miller
Hufft Projects
KDOT-RCP
Norris-Design
Ochsner Hare & Hare
PLAID Collaborative
RTA Architects - Colorado Springs
Studio Outside
Trenor Architects
Gould Evans
505 Design
Bohlin Cywinski Jackson - Seattle
EDSA
Mancini Duffy
SASAKI

AROUND THE COLLEGE

APDesign students working with Sunset Zoo Spooktacular

Students from the College of Architecture, Planning & Design's interior architecture & product design department will join forces with Sunset Zoo during its annual Pumpkin Carving Contest on Monday, Oct. 19. [Click here for full story.](#)

Third Year APDesign Students Win in Regional Competition

Students from the College of Architecture, Planning & Design's architecture department participated in the 2015 American Institute of Architects - Central States Regional competition on October 15-16 in Des Moines, Iowa.

Students were asked to design a prototype for the reinvention of the 7th and Locust instance of the Des Moines skywalk system. This year was an ideas competition for the activation of the street level by the modifications of the skywalks. Program and use possibilities included urban farming, art, entertainment, infrastructure and transportation.

Third year students from the department of architecture, presented "Skydeck" to the panel of jurors and won third place for their outstanding efforts.

Students participating were Morgan Brown, Columbia, MO; Aaron Church, Hughesville, MO; Kristyn Garver, Albia, IA and Peter Syzonenko, Bangor, PA; Assistant Professor of Architecture, Christopher Fein served as advisor to the students.

Professor Matt Knox, department head for architecture said, " I couldn't be more proud of our third year students who were competing against fifth year students from other design colleges from around the region. This is just one of many examples of the high quality of design education coming out of APDesign at K-State."

Distinguished Lecture Series - November 9

9:45 a.m. APD West,
room TBD

22 APDesign
Scholarship Reception

23 Dean's Advisory
Council

NOVEMBER

9 Distinguished Lecture
Series - Gonçalo Byrne,
Architect, 5pm in K-
State Union Forum Hall

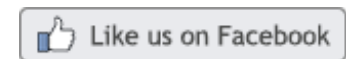
12-14 Draw & Design
Workshop - James
Richards Hale Library
Hemisphere Room and
other Locations.

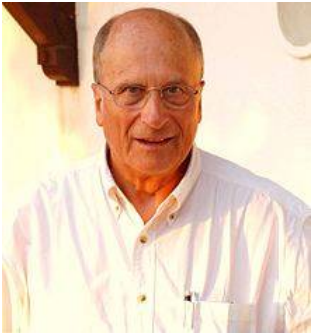
CONNECT WITH US

[APDesign Website](#)

[K-State Website](#)

[Weigel Library Website](#)



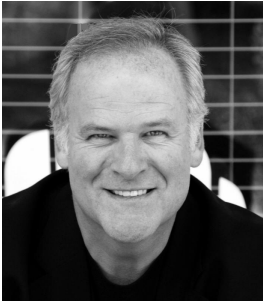


Gonçalo Byrne, architect from Portugal, presents first in the 2015-16 Distinguished Lecture series on Monday, November 9, 2015 at 5pm in the K-State Union Forum Hall.

Byrne is responsible for a vast accomplishment of architectural work, and has been awarded with many national and international prizes.

[Click here for more.](#)

James Richards presents in Draw and Design Workshop Series



November 12,13,14 , 2015
Hale Library Hemisphere Room

Thursday 4pm presentation in the Hemisphere Rm, Hale
Friday class visits and 1 - 4pm workshop at the BMoA
Saturday 10 am - 2 pm workshop at the BMoA

(sign up* by Nov. 6th) * Sign-up by joining APDPro and selecting the workshop of your choice. Contact Lorn Clement (lacjr@ksu.edu) or Danna Voegeli (dvoegeli@ksu.edu) for assistance. [Click here for more information.](#)

APDPro NEWS

Mock Interviews
[SPECIAL TOPIC/TRANSITION TO CAREER]
Monday, Oct 19, K-State Alumni Center

Kat Chats: Awareness, Assistance, and Breaking the Stigma Associated with Mental Illness
[SPECIAL TOPIC]
Tuesday, Oct 20, 4-5 p.m., Leasure Hall

Walk-In Wednesday (CES)
[SPECIAL TOPIC]
Wednesday, Oct 21, 12-4 p.m. Holtz Hall

Transitioning into Work and Understanding Employer Benefits
[FINANCIAL PLANNING/SPECIAL TOPIC/TRANSITION TO CAREER]
Monday, Oct 26, 5:30 p.m., APDWest

K-STATE LAUNCHES ENTREPRENEURIAL COMPETITION

K-State Center for the Advancement of Entrepreneurship invites all K-State students with an entrepreneurial idea to compete for a prize pool of \$20,000 in the 2015 K-State Launch competition. This is an exciting opportunity. [Read all about how to enter.](#)

College of Architecture, Planning & Design | (785) 532-5950 | apdesign@ksu.edu |
115 Seaton Hall
Kansas State University
Manhattan, KS 66505