

KANSAS STATE
UNIVERSITY

College of Architecture,
Planning and Design



**ENVISION.
CREATE.
INSPIRE.**

COLLEGE OF ARCHITECTURE, PLANNING & DESIGN

OUR BUILDING

As a student in the College of Architecture, Planning & Design, you will attend classes in a beautiful, historic space with modern classrooms, design laboratories and educational resources. Our facilities exemplify the highest quality of all our disciplines.

The Seaton/Regnier Complex is a living laboratory that's home to our studios, labs and workshops. The beautiful limestone buildings in the center of the Manhattan campus are from the early 20th century, and their history is a daily reminder of our land-grant heritage for our students and faculty.

Studios are where you will learn and perfect skills like drawing and model-making. The studio culture also helps students understand the value and organization of space.

Features of the building:

- 49 design studios in 21 multidisciplinary laboratory spaces
- 300-person lecture hall with 4K laser projection and conferencing capability
- 17 dedicated critique spaces and 18 informal critique/collaboration spaces
- More than 50 fully integrated 70- to 84-inch conferencing video monitors
- Six indoor 24-hour lounge/collaboration spaces
- Balcony and rooftop gathering areas with green roofs
- Library with flex reading room, quiet reading area, group study space, special collections and exterior reading courtyard
- Exterior courtyard and amphitheater
- 20,000 square feet of fabrication space, including a large outdoor fabrication yard with 24-hour access to laser cutters and 3D printers
- LEED Silver classification
- Space and furnishings that model professional environments
- After-hours key card security access to the building and labs

Our newest program, the Bachelor of Science in interior design, is currently located in Justin Hall with transition to the Seaton Complex planned over the next two years.



Photography courtesy of Hursley and Kansas State University



FAST FACTS

Providing exceptional students exemplary education

STUDENT-TO-FACULTY RATIO

16:1



100

STUDENTS PER YEAR COMPLETE AN INTERNSHIP



15

COMMUNITY-BASED PROJECTS PER YEAR



78%

6-YEAR GRADUATION RATE



90%

FIRST-TO-SECOND-YEAR RETENTION RATE, LEADING THE UNIVERSITY AS OF FALL 2024



90

STUDENTS PER YEAR PARTICIPATE IN EDUCATION ABROAD

Student demographics

52%

IN-STATE

48%

OUT-OF-STATE

APDesign students

Environmental design (first year)	208
Architecture	347
Industrial design	53
Interior architecture	114
Landscape architecture	72
Regional & community planning	24
BS in Interior Design	146
BS in real estate & community development	26
Postbaccalaureate master's degrees	23

MS in architecture	2
MS in community development	22
Interdisciplinary doctorate	3
APDesign faculty	77

Degrees granted per year (approx.)

Bachelor of Science degrees	28
Nonbaccalaureate master's degrees	129
Postbaccalaureate master's degrees	9

THE APDesign EXPERIENCE

It Starts Now

Thinking ■ Making ■ Doing

THE APDesign DIFFERENCE

As an APDesign student, you'll work alongside students in all design and planning disciplines. You will not only design and plan but also build and fabricate. As a student at one of the most affordable and highly regarded programs in the nation, you will receive an educational experience that prepares you for excellence in your chosen career path.



CULTURE

Studio forms the core — the heart and soul — of the APDesign student experience. You will have the opportunity to work with students in all the design and planning professions, which is the foundation for building lasting friendships and professional colleagues. The shared experience is engaging, interactive, powerful and fun!

You will create work that exceeds your initial expectations of yourself and build lasting memories with your friends along the way.

DIGITAL TECHNOLOGY

Computer access and knowledge are vital to your success. For that reason, we strive to offer the most up-to-date design software and programs through constant research and inquiry into the digital tools needed in the professions. Video conferencing technology allows you to connect anytime with practice leaders and experts from across the world. Our degree programs will provide you with the digital knowledge and tools necessary to enter the professional world.



ENGAGED LEARNING

Engaged learning is part of our culture. The opportunity to apply knowledge and skills gained in courses to the direct implementation or future vision of a product, furniture, urban design, landscape site or building will further enhance your education. Many programs feature opportunities to work with real communities and organizations making an impact.



WEIGEL LIBRARY

The Paul Weigel Library provides professional assistance and access to materials that enhance teaching, learning and research endeavors of the students, faculty and staff of the college.

Enjoy access to an extensive collection of books, periodicals and visual resources across all college disciplines without ever leaving the building:

- 43,000+ volumes and 34,000+ titles
- Individual research consultations with subject librarian
- 1,175+ rare special collection resources
- Image repositories, eBooks, online journals and databases
- Open 67 hours per week during the academic year



FAB LABS

Your hands-on education is taken to a new level when you step into the 20,000 square feet of Fabrication Labs. The Fab Labs are beautifully designed to encourage and support your exploration and fabrication of design solutions. You will work with teaching technicians and fellow students in a state-of-the-art facility featuring an amazing array of equipment and machines.

PREPARED FOR ANY PROJECT

Design Research Resources

Production

Fabrication Lab:

- A variety of general purpose fabrication equipment and tools
- Large-bed industrial CNC router
- Plastic thermo-former

Fine Woodworking Lab:

- A variety of traditional woodworking machines and tools

Small CNC Lab:

- Three small CNC routers for intricate detailing and joinery

Upholstery Lab:

- High-end sewing machines for a variety of fabrics and materials

Glass Lab:

- Kiln for molding and forming glass

Metals Lab:

- Contains a large-bed CNC plasma cutter
- Variety of sheet metal and bending equipment
- Large milling machine and lathes
- Welding (MIG, TIG, Stick & Spot)

3D Print Lab:

- Contains 15 — and counting — FDM 3D printers

Model-Making Lab:

- A dedicated space for intricate models and small prototypes

Center for Design Excellence:

- A large, open space for special design projects, assembly, research and exhibits

Spray Finish Lab:

- Industrial spray booth for safely applying high-end finishes and paints

Visualization

Oculus Rift and VIVE virtual reality headsets

Immersion and Visualization Environment

HoloLens headset for Augmented Reality prototyping

Heliodon solar analysis

Testing

Environmental Envelope Lab

Fluvial Lab

Four experimental green roofs at Memorial Stadium, Seaton Hall, Regnier Hall

The Meadow research site

Rain garden research site

THE APDesign EXPERIENCE

Explore the World

Part of our mission is to introduce you to as many places and opportunities as possible to enrich your learning. Beginning in the first year, all students travel to places with exemplary design, often in conjunction with current projects. Travel beyond the first year includes visiting professional environments such as design firms, showrooms, manufacturers and state-of-the-art green infrastructures. Our students and faculty have most recently visited the following places:


- Boston, MA
- Chicago, IL
- Columbus, IN
- Dallas-Fort Worth, TX
- Denver, CO
- Grand Rapids, MI
- Los Angeles, CA
- New York City, NY
- Portland, OR
- San Diego, CA
- San Francisco, CA
- Seattle, WA
- Washington, DC

Some field trips and faculty-led study tours are abroad. APDesign students have visited Canada, China, Japan, Norway, Mexico, South Korea, Switzerland and the United Kingdom in recent years.

EXPERTS FROM AROUND THE WORLD COME TO APDesign

We bring the world to you by inviting experts to join us in person and virtually to participate in critiques of your projects, partner in sponsored studios, give lectures and much more. The Ekdahl Distinguished Lecture Series brings eight outstanding lectures to campus each year in addition to several department-specific lectures and guests, enhancing your experience as a student in APDesign.





We want you to spend time away from campus augmenting your education through a semester or summer experience of education abroad, professional internship and/or the Kansas City Design Center.



EDUCATION ABROAD

Students have opportunities to study abroad, usually later in their academic career. APDesign collaborates with study abroad programs in Italy, Australia, Germany, Czech Republic, Denmark, Spain and other exciting locations. Studying abroad affords students new and varied opportunities to study design and planning in different venues.



INTERNSHIP

Internship opportunities at design and planning firms allow students to spend a semester and/or summer experiencing what it might be like to work in the allied design professions. We help students identify internships that align with their interests in firms across the nation and around the world.



KCDC

Located in the heart of downtown Kansas City, the Kansas City Design Center, or KCDC, is a nationally recognized partnership of local civic leaders, professional designers, and design/planning students and faculty. KCDC engages students in a learning laboratory that actively explores Kansas City's future development.

STUDENT LEADERSHIP OPPORTUNITIES

- American Institute of Architecture Students
- American Society of Interior Design Student Chapter
- American Society of Landscape Architects Student Chapter
- APDesign Ambassadors
- APDesign Digital Fabrications Club
- APDesign Plot Club
- Architecture Student Advisory Board
- Dean's Student Advisory Council
- iDesign
- Industrial Designers Society of America
- Interior Architecture Student Council
- International Interior Design Association
- National Organization of Minority Architecture Students
- Oz — Student Journal
- Student Association of Real Estate & Community Developers
- Student Chapter
- Student Planning Association
- Tau Sigma Delta
- Women in Design

WHAT DEGREE IS

ARE YOU LOOKING TO PURSUE YOUR FIRST DEGREE?

Nonbaccalaureate master's degrees

MASTER OF ARCHITECTURE*

Learn to think, design, shape, make and advocate for a better world.

139 Undergraduate credit hours | **31** Graduate credit hours

170 Total credit hours required

Accredited by the National Architectural Accrediting Board. Learn more about accreditation at naab.org and professional licensing at ncarb.org.

MASTER OF INDUSTRIAL DESIGN

Create products that have a lasting effect on people.

139 Undergraduate credit hours | **31** Graduate credit hours

170 Total credit hours required

Approved by the National Association of Schools of Art and Design. Learn more at nasad.arts-accredit.org.

MASTER OF INTERIOR ARCHITECTURE

Create spaces and furniture that transform the interior world.

139 Undergraduate credit hours | **31** Graduate credit hours

170 Total credit hours required

Accredited by the Council for Interior Design Accreditation and approved by the National Association of Schools of Art and Design. Learn more about accreditation at accredit-id.org and nasad.arts-accredit.org and the National Interior Design Qualification at cidq.org.

MASTER OF LANDSCAPE ARCHITECTURE*

Design places that connect people to the natural world.

119 Undergraduate credit hours | **34** Graduate credit hours

153 Total credit hours required Accredited by the Landscape Architectural Accreditation Board. Learn more about accreditation at asla.org/accreditationlaab.aspx and professional licensure at clarb.org/take-the-exam/check-eligibility.

MASTER OF REGIONAL & COMMUNITY PLANNING*

Remake cities into dynamic places to live, work and play.

92 Undergraduate credit hours | **46** Graduate credit hours

138 Total credit hours required

Accredited by the Planning Accreditation Board. Learn more about accreditation at planningaccreditationboard.org and professional certification at planning.org/certification.

High school graduates and transfer students

4-year bachelor's degrees

BACHELOR OF SCIENCE IN INTERIOR DESIGN

Learn to design spaces that support human well-being.

120 Total credit hours required

Accredited by the Council for Interior Design Accreditation and approved by the National Association of Schools of Art and Design. Learn more about accreditation at accredit-id.org and nasad.arts-accredit.org and the National Interior Design Qualification at cidq.org.

BACHELOR OF SCIENCE IN REAL ESTATE & COMMUNITY DEVELOPMENT

Help reimagine main streets and downtown districts.

120 Total credit hours required

RIGHT FOR ME?

ALREADY HAVE A DEGREE?

But not necessarily in the design/planning professions
2-3+ year master's degrees | Postbaccalaureate degree

MASTER OF ARCHITECTURE*

(3+ years)

72 Undergraduate credit hours | **31** Graduate credit hours

103 Total credit hours required

Accredited by the National Architectural Accrediting Board. Learn more about accreditation at naab.org and professional licensing at ncarb.org.

MASTER OF INDUSTRIAL DESIGN

(3+ years)

80 Undergraduate credit hours | **31** Graduate credit hours

111 Total credit hours required

Approved by the National Association of Schools of Art and Design. Learn more at nasad.arts-accredit.org.

MASTER OF INTERIOR ARCHITECTURE

(3+ years)

80 Undergraduate credit hours | **31** Graduate credit hours

111 Total credit hours required

Accredited by the Council for Interior Design Accreditation and approved by the National Association of Schools of Art and Design. Learn more about accreditation at accredit-id.org and nasad.arts-accredit.org, and the National Council for Interior Design Qualification at cidq.org.

MASTER OF LANDSCAPE ARCHITECTURE*

(3+ years)

53 Undergraduate credit hours | **34** Graduate credit hours

87 Total credit hours required

Accredited by the Landscape Architectural Accrediting Board. Learn more about accreditation at asla.org/accreditationlaab.aspx and professional licensure at clarb.org/take-the-exam/check-eligibility.

MASTER OF REGIONAL & COMMUNITY PLANNING*

(2 years)

46 Graduate credit hours | **46** Total credit hours required

Accredited by the Planning Accreditation Board. Learn more about accreditation at planningaccreditationboard.org and professional certification at planning.org/certification.

MASTER OF SCIENCE IN COMMUNITY DEVELOPMENT

(online program)

36 Credit hours required

I HOLD AN ACCREDITED DEGREE

In one of the design/planning professions
2-year master's degree | Post-professional

MASTER OF SCIENCE IN ARCHITECTURE*

Minimum of **30** credit hours

PH.D.*

Designed for students who have earned a master's degree coupled with relevant professional, research or creative work experience.

60 Credit hours required

For additional information, visit apdesign.k-state.edu/academics/phd.

MINOR/CERTIFICATE

Designed for students in APDesign as well as other majors.

COMMUNITY PLANNING MINOR

15 Total credit hours required

COMMUNITY DEVELOPMENT CERTIFICATE

(online program)

12 Total credit hours required

INDUSTRIAL DESIGN MINOR

15 Total credit hours required

*STEM-designated degrees by the U.S. Department of Homeland Security

BACHELOR OF SCIENCE IN

Interior Design

K-State's CIDA-accredited interior design program teaches a human-centered and research-based approach to design. Our interior design students learn to design environments that shape human behavior and foster human health and well-being. You will learn to effectively apply design research in the conceptualization planning, and execution of environments that meet the needs of diverse individuals and complex human interactions.

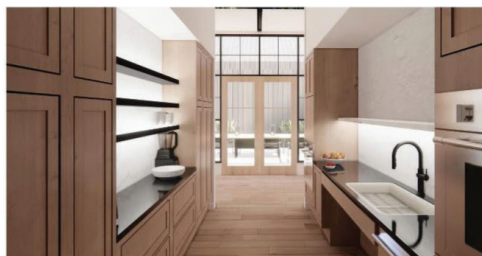
Graduates of our interior design program are well-equipped for a range of professional opportunities within the building construction industry and related fields. Most graduates find rewarding roles as designers within multidisciplinary architecture and design firms, while others thrive in specialized interior design businesses. Additionally, our alumni pursue diverse career paths, holding positions across various professional domains. Some graduates go on to pursue graduate degrees and develop specializations in areas such as lighting design, historic preservation and high-end residential design.

YOUR FUTURE BEYOND INTERIOR DESIGN

Career possibilities for graduates of the interior design program could include:

- Interior designer
- Space planner
- Facilities management
- Construction management
- Manufacturer's representative
- Integrated technology

THE ADAPTIVELY ACCESSIBLE HOME



by Madison Svoboda



PROGRAM HIGHLIGHTS

IDEC Design and Video Competition

Since 2020, interior design students have won six first- and second-place awards in IDEC design and video competitions for students in the U.S. and Canada.

METROPOLIS Future 100 Interior Design Undergraduate Winners

Interior design students were selected by this national competition in 2022 and 2024.

Scholarships

Interior design students earn scholarships from prestigious organizations such as NEWH, Thermador, Kravat and others.

As an interior designer, you want to work with clients to create environments that shape human behavior and foster well-being.

BEYOND STUDIO

Our comprehensive curriculum includes a wide range of knowledge and skills essential for both entry-level interior design practice and continuing academic pursuits. Students benefit from the integration of learning between interior design studios and courses in design theory, history, construction, technology and practice. Students start building their professional networks while in our program through the iDesign, our student club, K-State chapters of IIDA and ASID, participation in events hosted and sponsored by our professional advisory board, and through alumni and practitioner engagement in our program and classes.

In each year of study, students take field trips that supplement classroom learning.

First-year students go to Wichita to see modern architecture. Second-year students take multiple regional trips to see buildings under construction, fabrication and manufacturing facilities, and design showrooms. Third-year students go to Chicago to visit professional offices and to see manufacturers' showrooms. Fourth-year students work with interior architecture students at Inje University in South Korea to complete a project in the fall semester. Each student is assigned a practicing professional who serves as a mentor as they complete their capstone project in the spring semester. Every student can participate in faculty-led study tours abroad to South Korea, Great Britain and Italy.



Accredited by the Council for Interior Design Accreditation

NASAD

Approved by the National Association of Schools of Art and Design

by Alicia Thurston



RECD

BACHELOR OF SCIENCE IN

Real Estate & Community Development

The new Bachelor of Science in real estate & community development (BS RECD) program uniquely bridges community development and business, preparing students to:

- Bring together expertise in community development/social values and business/real estate, focusing on people and place.
- Prepare for future workforce areas in downtown development programs, business improvement districts, environmental groups, and in the public, private and non-governmental organizational sectors.
- Make connections between programs in APDesign and the College of Business Administration.

In the BS RECD curriculum, students will have the opportunity to participate in a study abroad experience and/or complete a professional internship.

YOUR FUTURE BEYOND REAL ESTATE & COMMUNITY DEVELOPMENT

Graduates of the program will be ready to work in the following sectors:

- Private real estate development firms (with community-minded focus)
- Financial enterprises (banking institutions' community investments and/or venture capital programs)
- Nonprofit organizations (affordable housing programs)
- Government agencies (environmental or transportation)
- Corporate entities (social responsibility divisions or initiatives)
- Social institutions (job training as economic development)





PROGRAM HIGHLIGHTS

- Graduate in four years with this new bachelor's degree.
- Work alongside our longstanding, awarding-winning and highly ranked graduate program faculty.

BEYOND THE CLASSROOM

Students will consider built capital and learn how to map assets. Students will work to help reimagine main streets, downtown districts, neighborhoods and beyond.

You're aware of community development challenges and interested in helping others and making quality places to live.



IDSN

•120•

TOTAL HOURS REQUIRED
FOR GRADUATION

CURRICULUM GUIDE

Setting a path for your future education

BACHELOR OF SCIENCE IN INTERIOR DESIGN 2024

FIRST SEMESTER

ID	225	Interior Design Studio 1	4
ID	210	Design and Behavior for Interiors	3
		English Requirement [KSC-1]	3
		Social and Behavioral Sci. Requirement [KSC-5]	3
HHS	100	Well-Being I	1
			3
			14

Summer: Study Tour (Optional)

SECOND SEMESTER

ID	245	Interior Design Studio 2	4
IDFS	350	Our Sustainable World	3
		* Natural & Physical Sci. w/Lab Requirement [KSC-4]	4
		** Arts & Humanities Requirement [KSC-6]	3
		Mathematics & Statistics Requirement [KSC-3]	3
			17

THIRD SEMESTER

ID	325	Interior Design Studio 3	3
ID	320	History of Interior Design I	3
ID	310	Const. Methods & Materials for Interior Design	4
ID	315	Digital Visualization I	2
		English Requirement Requirement [KSC-1]	3
HHS	200	Well-Being II	1
			16

Summer: Practicum & Study Tour (Optional)

FOURTH SEMESTER

ID	345	Interior Design Studio 4	3
ID	360	History of Interior Design II	3
ID	330	Textiles for Interior Design	3
ID	415	Digital Visualization II	2
		Social & Behavioral Sci. Requirement [KSC-5]	3
HHS	300	Well-Being III	1
			15

FIFTH SEMESTER

ID	425	Interior Design Studio 5	4
ID	435	Environmental Systems for Interior Design	3
		Business Application Course	3
		*** Professional Applications Elective	5
			15

Summer: ID 599 Internship and Study Tour (Optional)

SIXTH SEMESTER

ID	445	Interior Design Studio 6	4
ID	440	Lighting for Interiors	3
ID	530	Interior Design Practices and Procedures	3
		*** Professional Applications Elective	3
		Communication Requirement [KSC-2]	3
			16

SEVENTH SEMESTER

ID	545	Interior Design Studio 7	4
ID	651	Design for Supportive Environments	4
		*** Professional Applications Elective	3
		Arts and Humanities Requirement [KSC-6]	3
			14

EIGHTH SEMESTER

ID	645	Interior Design Studio 8	4
		*** Professional Applications Elective	3
		Free Elective [KSC-7]	3
		Free Elective [KSC-7]	3
			13

The courses below are required if not met through University Core requirements:

* PHYS 101 - The Physical World Credits: 3 [KSC-4]

AND

* PHYS 103 - The Physical World Laboratory Credits: 1 [KSC-4]

** ART 196 - Survey of Western Art History II Credits: 3 [KSC-6]

***A list of professional applications electives can be found in the University Course Catalog. You will work with your academic advisor to choose courses that are in line with your professional interests and goals. Study tours and internships qualify for these electives.

KANSAS STATE
UNIVERSITY

College of Architecture,
Planning & Design

RECD

•120•

TOTAL HOURS REQUIRED
FOR GRADUATION

CURRICULUM GUIDE

Setting a path for your future education

BACHELOR OF SCIENCE IN REAL ESTATE AND COMMUNITY DEVELOPMENT 2024

FIRST SEMESTER

ENVD	203	Survey of Design, Plng. & Comm.Dev. Prof.	1
MATH	100	College Algebra [KSC-3]	3
COMM	106	Public Speaking 1 [KSC-2]	3
LAR	101	Intro to Landscape Architecture	3
		Free Electives [KSC-7]	6
			16

SECOND SEMESTER

ENGL	100	Expository Writing I [KSC-1]	3
ARCH	299	Appreciation of Architecture	3
STAT	225	Intro to Statistics	3
		Arts & Humanities Requirement [KSC-6]	3
		Natural Sci. w/ Lab Requirement [KSC-4]	4
			16

THIRD SEMESTER

PLAN	115	Intro to Regional and Community Planning	3
PLAN	320	Community Development Field Workshop	3
GEOG	302	Cartography	3
ECON	110	Principles of Macroeconomics	3
		OR	
ECON	120	Principles of Microeconomics	3
		Social & Behavioral Sci. Requirement [KSC-5]	3
			15

FOURTH SEMESTER

PLAN	215	World Cities	3
LAR	298	Ethics and Environmental Dilemmas	3
ENGL	200	Expository Writing II [KSC-1]	3
GEOG	508	Geographic Information Systems I	4
ACCT	231	Accounting for Business Operations	3
			16

FIFTH SEMESTER

PLAN	640	Urban Design & Development	3
PLAN	510	Graphic Comp. & Representation for Planning	2
PLAN	444	Career Planning Seminar	2
FINAN	450	Principles of Finance	3
		Social & Behavioral Sci. Requirement [KSC-5]	3
		Arts & Humanities Requirement [KSC-6]	3
			16

SIXTH SEMESTER

Option 1: Internship			
PLAN	703	Off-Campus Studies	5
PLAN	665	Planning Professional Internship	7
OR			12
Option 2: KCDC or Education Abroad			
PLAN	703	Off-Campus Studies	5
		General Electives	7
OR			12
Option 3: On Campus			
		General Electives	12
			12

SEVENTH SEMESTER

PLAN	720	Infrastructure Plan Implementation	3
PLAN	718	Principles & Strategies of Comm. Change	3
		General Elective	3
		Professional Elective	3
		Professional Elective	3
			15

EIGHTH SEMESTER

LAR	500	Site Planning and Design	3
FINAN	552	Real Estate	3
		General Elective	2
		Professional Elective	3
		Professional Elective	3
			14

KANSAS STATE
UNIVERSITY

College of Architecture,
Planning & Design

ENVD:

Common first year for five-year master's degrees

Environmental Design Studies Program

The environmental design studies program is APDesign's first-year program of study for all students pursuing our five-year master's degrees. You will explore the design professions while directly engaging in design work that provides a strong foundation for your education.

Two ENVD options are available. Both options provide an introduction to the design and planning professions. For most students, it is an introduction to a new way of seeing and thinking about the environments we occupy.

- The studio option leads to a degree in architecture, interior architecture, industrial design or landscape architecture.
- The planning option leads to a degree in regional & community planning.

FIRST-YEAR STUDENTS TAKE SIX REQUIRED ENVD COURSES:



ENVIRONMENTAL DESIGN STUDIO

The two-semester Environmental Design Studio introduces the visual and verbal vocabulary employed in the creation, definition and communication of space. Each ENVD studio class consists of approximately 18 students. Studio is a hands-on design course where you will draw, build models, take field trips and more. To experience diverse approaches, students take studio with a different professor each semester. The professors who teach in the first-year program are dedicated to the college's teaching mission and to providing a challenging and supportive academic experience.

** Not required for the planning option.*



STUDIO SEMINAR

The studio is the core setting for the design and planning programs in APDesign. Information that is both common and critical to the work being done in studio, as well as some of the best practices to employ with regard to managing oneself in this environment, are covered in this course.

** Not required for the planning option.*



HISTORY OF THE DESIGNED ENVIRONMENT

Because the environments we create are an expression of culture, students enroll in the two-semester course, History of the Designed Environment. This course introduces students to the connections between our past and present society and to the design professions as civic art.



SURVEY OF DESIGN PROFESSIONS

Survey of Design Professions explores each of the disciplines within the allied design and planning professions and gives students an opportunity to become better acquainted with professional opportunities in those fields.

WE TAKE YOUR SUCCESS SERIOUSLY

You'll be surrounded by inspiration and support in APDesign. Interact with all year levels and degree programs by attending welcome events before classes begin, getting to know peer educators assigned to each studio section and informally establishing relationships with upperclassmen who share your physical design studio space.



PEER EDUCATORS

Learn from second- through fifth-year students as they work together and serve as peer educators assigned to your first-year studio class.



STUDIO SPACE

As an ENVD student, you have 24/7 access to your assigned studio space with an ergonomic desk and chair.



ACADEMIC ADVISING

Academic advising is highly valued in APDesign, and our professional academic advisors are a critical piece of your academic support system. They provide direction and counsel as you navigate demanding professional curricula and celebrate your many successes along the way.



APDesign CAT COMMUNITY

Live with fellow APDesign students as you get to know your ENVD classmates, join study groups and meet regularly with a current APDesign student serving as the residential learning assistant. Attend weekly meals or meetings with faculty members, administrators and upper-level students. Living with your classmates will help you stay focused and motivated.

TYPICAL FIRST SEMESTER WEEKLY SCHEDULE

	MONDAY	TUESDAY	WEDNESDAY	THURSDAY	FRIDAY
8:30 a.m.			College Algebra LEC: 8:30-9:20		
9:30 a.m.	College Algebra REC: 9:30-10:20	Public Speaking 9:30-10:20		Public Speaking 9:30-10:20	College Algebra LAB: 9:30-10:20
10:30 a.m.	General Elective 10:30-11:20		General Elective 10:30-11:20		General Elective 10:30-11:20
11:30 a.m.	History of Designed Environment 11:30-12:20		History of Designed Environment 11:30-12:20		History of Designed Environment 11:30-12:20
2:30 p.m.	Environmental Design Studio 2:30-5:20	Studio Seminar 2:30-3:20	Environmental Design Studio 2:30-5:20	Survey of Design Professions 2:30-3:20	Environmental Design Studio 2:30-5:20

Environmental Design Studio is also offered 8:30-11:20 a.m. on Monday, Wednesday and Friday.

ARCH

MASTER OF

Architecture

Think. Design. Make. These three actions shape the world. They are also the holistic foundation for the highly regarded Master of Architecture program at K-State. Our students learn to **think** critically and deeply, allowing them to engage the issues and contexts architecture addresses. **Design** is the tool architects use to effect change in the world and, with small classes and high contact hours, the design studio is the beating heart that powers the Master of Architecture curriculum. At K-State, design thinking leads to **making**, the act of creation in the physical world. Through speculation (modeling and drawing), experimentation (large-scale prototyping) and full-scale building projects, students gain confidence, growing as designers through direct interaction with the world around them.

YOUR FUTURE BEYOND ARCHITECTURE

In one of the last true generalist degree programs, architecture students accumulate skills and perspectives necessary to succeed in a wide variety of fields:

- Licensed professional architect
- Architectural specialist (historic restoration, sustainability, adaptive reuse, etc.)
- Product designer (furniture, building materials, textiles, etc.)
- Artist or graphic designer
- Filmmaker or video game designer
- Urban designer/planner
- Property developer
- Building client representative
- Professor, researcher or writer
- Politician or advocate





PROGRAM HIGHLIGHTS

- Highlighted by Metropolis Magazine as one of four architecture programs defining the future of design in its Future100 program. metropolismag.com/programs/2023-future100-schools-showcase
- Faculty are nationally and internationally recognized for their dedication to the profession, creative work and scholarship.

BEYOND STUDIO

The Net Positive Studio, led by Associate Professor Michael Gibson, designs and constructs housing that is affordable to occupy and operate. An advanced building envelope — paired with passive strategies, highly efficient systems and solar panels — delivers homes that have not only low rent but also a negligible power bill. netpositivestudio.org

As an architect, you are drawn to both art and science and want to address the real issues people face today to make a lasting imprint on human society.



NAAB

Accredited by the National
Architectural Accrediting Board

MASTER OF

Industrial Design

Our diverse industrial design program focuses on products for the built environment, ranging in scale from exhibit design to handheld devices, from consumer goods to furniture. Exploring material life cycles and upcycling alternatives, students develop a sense of environmental stewardship, leading them to become passionate innovators creating superior products for our future. Our safe and creative environment provides the perfect platform for you to push boundaries and bring your ideas to life. You will also gain hands-on production experience in our fully equipped wood, metal, plastic and upholstery labs, working with both traditional and modern manufacturing equipment.

YOUR FUTURE BEYOND INDUSTRIAL DESIGN

Career possibilities for graduates of the industrial design program could include:

- Consumer product designer
- Entertainment designer
- Package designer
- Furniture designer
- Experience designer
- Toy designer
- User-centered designer





by Thomas Argauer

PROGRAM HIGHLIGHTS

National competition recognition

In just a few years, the industrial design program has had four finalists in national competitions and one regional winner.

Industry partnerships

This program currently works with two national companies for product development. Two of the products designed in our studios are being developed for marketplace release soon.

Student research

In the last two years, our students have presented five papers at national conferences.

As an industrial designer, you want to design innovative products for diverse audiences and purposes while gaining entrepreneurial and hands-on design skills.

BEYOND STUDIO

Immersed within our curriculum are abundant opportunities for collaboration with industry partners. By engaging with professionals in the field, our students gain invaluable experiences that have opened doors to remarkable pathways. Some have secured internships, while others have even earned royalties for products they designed during their coursework.

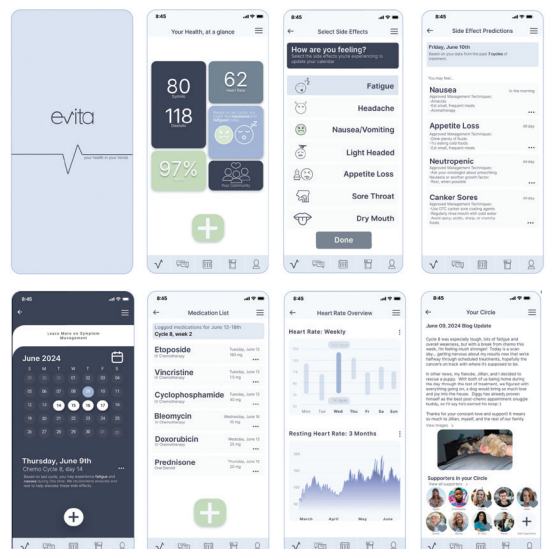
The program features a unique "Start-up" Studio during your fourth-year spring semester. During this comprehensive experience, you will develop projects specifically tailored to small-batch product development. This innovation incubator nurtures your entrepreneurial spirit and equips you with the necessary skills to comprehend all aspects of launching a product into the marketplace. By engaging in this transformative journey, you will refine your design abilities and gain a comprehensive understanding of the business and marketing elements crucial for success in the industry.

NASAD

Approved by the National Association of Schools of Art and Design



by Abi Schmidt and Kendall Schoenhals



MASTER OF

Interior Architecture

Our studios serve as vibrant hubs of creativity, presenting you with thought-provoking and challenging projects that span the entire spectrum of interior architecture. From intimate spaces to large-scale ventures, you will have the opportunity to delve into projects that inspire and ignite your imagination. Through these hands-on experiences, you will gain a profound understanding of how to (re)imagine spaces, merging functionality with aesthetic appeal.

One of the unique aspects of our program is the emphasis on firsthand experience. In our furniture studios, you will have the chance to witness the artistry of material integration. Equipped with state-of-the-art wood, metal, plastic and upholstery labs, you will explore the intricacies of craftsmanship and learn how various materials come together to form exceptional furniture pieces. Our curriculum embraces both traditional and modern manufacturing techniques, empowering you to work with a diverse range of equipment.

YOUR FUTURE BEYOND INTERIOR ARCHITECTURE

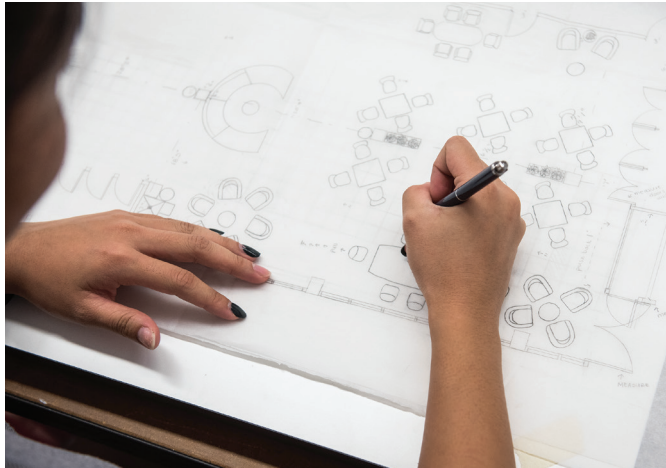
Career possibilities for graduates of the interior architecture program could include:

- Interior architect
- Furniture designer
- Historic preservationist
- Exhibit designer
- Space planner
- Graphic designer
- Set designer
- Lighting designer



by Madeleine Carey

by Hannah Harris



PROGRAM HIGHLIGHTS

Scholarship winners

Our students have won national scholarships for their work, including two \$30,000 Angelo Donghia Foundation scholarship winners and two \$5,000 Gensler Brinkmann Scholarship winners.

National competition recognition

During the last five years, we have had six finalists and two winners in national competitions.

Student research

During the last five years, our students presented 21 papers at international and national conferences.

As an interior architect, you want to create cutting-edge, sophisticated interior spaces with a focus on the people that use them.

BEYOND STUDIO

As you progress through our program, you'll embark on a dynamic journey that spans a diverse range of projects. From crafting intimate dwellings like tree houses or tiny homes to designing large-scale educational and corporate offices, you'll explore the full spectrum of interior architecture possibilities. This diversity of projects serves as a pillar of strength for our program, allowing you to develop a versatile skill set and adapt to various design challenges.

In our studios, you'll often have the unique opportunity to collaborate with real-world clients and industry partners. By working closely with them, you'll gain hands-on experience in translating their visions into reality. These projects will give you the chance to leave a lasting impact and showcase how your innovative designs can transform spaces and furniture to shape a brighter future.



Accredited by the Council for
Interior Design Accreditation

NASAD

Approved by the National Association
of Schools of Art and Design



MASTER OF

Landscape Architecture

The Master of Landscape Architecture (MLA) program provides students with a broad range of activities in the studio, classrooms and field to develop mastery of the profession. Woven into the course of study are ecology, sustainability, construction and scales of analysis, and design from site to regional. Classes combine design, technical skills, history, theory, natural science and research through hands-on learning in the field, fabrication shops and studio. Knowledge and skills gained prepare graduates to conserve and restore landscapes that create and remake cities for brighter, greener futures. Students engage in interdisciplinary projects and have options to complete their education with an independent master's report or thesis.

YOUR FUTURE BEYOND LANDSCAPE ARCHITECTURE

Graduates of the Master of Landscape Architecture program are prepared to design, plan, manage and steward the land in natural and urban environments. Career opportunities could include:

- Licensed professional landscape architect
- Ecological restoration planner
- Urban designer
- Zoo designer
- Campus and community master planner
- Green infrastructure specialist





PROGRAM HIGHLIGHTS

Our alumni have:

- Helped make New York City more pedestrian- and bike-friendly.
- Redesigned and rebuilt New Orleans' Ninth Ward after Hurricane Katrina with sustainable homes and landscapes.
- Developed the award-winning, innovative master plan shaping The Ohio State University's future.

As a landscape architect, you want to design places that connect people to the natural world, creating landscapes for people's everyday lives and their most memorable moments.

BEYOND STUDIO

Landscape architects have specialized knowledge of natural systems that we apply to address ecosystem and human community needs. Faculty and students apply their knowledge and skills in real communities, allowing you to practice the leadership skills important to your future career. The integration of faculty research and creative activities into studios allows you to partner with faculty on projects exploring current topics in landscape architecture and assisting communities and clients.



Accredited by the Landscape
Architectural Accreditation Board



MASTER OF

Regional & Community Planning

The Master of regional & community planning program offers an unparalleled opportunity for students to work across the scales of design and planning, from site design review to regional visioning. Courses build planning knowledge, values, ethics and skills. A sequence of carefully orchestrated classes and experiences specific to a student's degree path leads to completion of a report or thesis. A multidisciplinary committee of faculty guides student work, providing in-depth understanding of factors influencing regional and community issues. Our interdisciplinary approach leads to inspired and thoughtful solutions for the future.

YOUR FUTURE BEYOND REGIONAL & COMMUNITY PLANNING

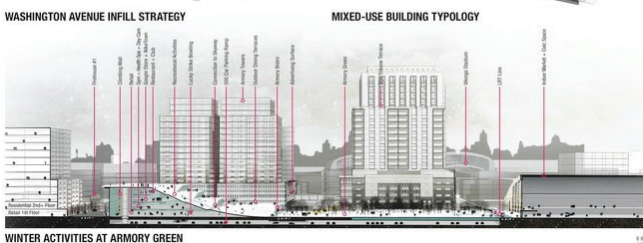
Graduates of the MRCP program are prepared to lead in a broad range of public, private and nonprofit sector planning environments:

- Neighborhood, city and regional planner
- Transportation specialist
- Health and housing development coordinator
- Economic developer and city manager
- Community advocate
- Natural resource and environmental planner
- Urban designer and historic preservationist





AN ICONIC GREEN FOR DOWNTOWN MINNEAPOLIS



PROGRAM HIGHLIGHTS

Our alumni have:

- Led a team of engineers, pilots and psychologists to plan the airspace over the United States.
- Worked with the Mmofra Foundation to help plan learning landscapes for children in Ghana.
- Been responsible for ecological planning for the state of Washington.

BEYOND THE CLASSROOM

Faculty and students apply their knowledge and skills in real communities, allowing students to practice the leadership skills important to their future careers. Collaborations with the landscape architecture program merge complementary knowledge and skills to tackle environmental and societal dilemmas in communities. In addition, faculty research, scholarship and creative activities open doors for students to partner with faculty on cutting-edge projects. These opportunities to apply knowledge from class to real-world situations bring planning to life.



Accredited by
the Planning
Accreditation Board

As a planner, you seek to remake cities into dynamic places to live, work and play.



WHAT TO EXPECT

COLLEGE CLASSES TO CONSIDER TAKING BEFORE YOU ARRIVE

College Algebra (*or higher-level math*)

Expository Writing I

Expository Writing II

Public Speaking

Dependent upon degree program:

Physics (*must be equivalent to Descriptive Physics or General Physics I*) OR Natural and Physical Science Elective with Lab

General electives (*Refer to curriculum guides to see the number of general electives required by each degree program.*)

Find more information about transfer equivalency, advanced placement and more at

apdesign.k-state.edu/prior-learning.



CONTACT

Your personal contact in APDesign is the director of student recruitment. Reach out with questions: myapd@k-state.edu, 785-532-5047.



ARCH

• 170 •

TOTAL HOURS REQUIRED
FOR GRADUATION
(INCLUDING ENVD PROGRAM)

CURRICULUM GUIDE

Setting a path for your future education

MASTER OF ARCHITECTURE 2024

ACCREDITED BY THE NATIONAL ARCHITECTURAL ACCREDITATION BOARD

ENVIRONMENTAL DESIGN STUDIES PROGRAM

FIRST SEMESTER

ENVD	201	Environmental Design Studio I	4
ENVD	203	Survey of Design, Plan. & Comm.Dev. Prof.	1
ENVD	204	Studio Seminar	1
ENVD	250	History of Designed Environment I	3
MATH	100	College Algebra	3
COMM	106	Public Speaking 1	3
		*General Elective	2
			17

SECOND SEMESTER

ENVD	202	Environmental Design Studio II	4
ENVD	251	History of Designed Environment II	3
PHYS	115	Descriptive Physics	5
ENGL	100	Expository Writing I	3
			15

ARCHITECTURE PROGRAM

THIRD SEMESTER

ARCH	302	Architectural Design Studio I	5
ARCH	248	Fundamentals of Arch. Technology	3
ARCH	325	Intro to Architectural Theory	3
ENGL	200	Expository Writing II	3
ARCH	274	Digital Architecture I	1
		*General Studies Elective	3
			18

FOURTH SEMESTER

ARCH	304	Architectural Design Studio II	5
ARCH	252	History of Contemporary Architecture	3
ARCH	347	Structural Systems in Arch. I	4
ARCH	433	Bldg. Const. Systems in Arch. I	3
ARCH	373	Digital Architecture II	1
			16

SUPPLEMENTAL STUDY

		*General Studies Elective	6
--	--	---------------------------	----------

FIFTH SEMESTER

ARCH	403	Architectural Design Studio III	5
ARCH	413	Environmental Systems in Arch. I	4
ARCH	448	Structural Systems in Arch. II	4
ARCH	374	Digital Architecture III	1
		*General Studies Elective	3
			17

SIXTH SEMESTER

ARCH	404	Architectural Design Studio IV	5
ARCH	434	Bldg. Const. Systems in Arch. II	3
ARCH	514	Environmental Systems in Arch. II	3
LAR	500	Site Planning and Design	3
		*General Studies Elective	3
			17

SEVENTH SEMESTER

ARCH	605	Architectural Design Studio V	5
		**Planning Elective	3
		*General Studies Elective	5
		** Professional Support Elective	3
			16

EIGHTH SEMESTER

ARCH	606	Architectural Design Studio VI	5
		(on campus, KCDC or study abroad)	
		** Professional Support Electives	9
			14

NINTH SEMESTER

ARCH	817	Architectural Design Studio VII	5
ARCH	805	Comprehensive Design Prep	3
ARCH	853	Pro Prac: Prof. Responsibility	1
ARCH	854	Pro Prac: Office Practice	1
ARCH	855	Pro Prac: Disc-Specific Topics	1
ARCH	750	** Writing Intensive Arch Seminar	3
		* General Studies Elective	3
			17

TENTH SEMESTER

ARCH	818	Architectural Design Studio VIII	5
		** Architecture Seminar	6
		** Professional Support Elective	3
		* General Studies Elective	3
			17

* A minimum of twenty-eight (28) general studies elective credits must be in non-architectural studies courses. Courses in communications, history, humanities, social sciences, natural sciences, foreign languages, or mathematics will fulfill this requirement. They may be taken in pursuit of a minor or certificate. They may be taken any time prior to or during the Architecture program and may include KSU approved AP, IB, CLEP and transfer credit. A maximum of 3 credits of English Language Program courses and a maximum of 3 credits in recreation courses may be used to fulfill general studies requirements. General studies electives may include KSU approved extracurricular work as allowed by university regulations.

** The M.Arch degree requires twenty-seven (27) hours of professional support (PSE) electives, twelve (12) for undergraduate credit and fifteen (15) for graduate credit. Of the undergraduate credits, at least three (3) hours must be Planning elective credits; the other nine (9) are usually fulfilled in the 8th semester as part of the 4th year study options. At least nine (9) hours of the graduate level PSE must be architecture seminars. Students may not count more than three (3) total hours of department approved extracurricular PSE credits (such as Oz, NOMAS, Plot Club etc.) toward graduation. PSE credits correspond to optional studies as listed in the 2014 NAAB Conditions of Accreditation.

Students are encouraged to participate in off-campus study in the 4th year of the program. Alternative study options for ARCH 606 include study abroad or attending the Kansas City Design Center. An optional academic internship program is also available. Students interested in participating in one or more of these options should meet with their academic advisor.

Courses listed in **bold** type represent those hours required within the graduate program. Total graduate credit hours is 31.

KANSAS STATE
UNIVERSITY

College of Architecture,
Planning & Design

INDD

•170•

TOTAL HOURS REQUIRED
FOR GRADUATION
(INCLUDING ENVD PROGRAM)

CURRICULUM GUIDE

Setting a path for your future education

MASTER OF INDUSTRIAL DESIGN 2024

APPROVED BY THE NATIONAL ASSOCIATION OF SCHOOLS OF ART & DESIGN

ENVIRONMENTAL DESIGN STUDIES PROGRAM

FIRST SEMESTER

ENVD	201	Environmental Design Studio I	4
ENVD	203	Survey of Design, Plan. & Comm.Dev. Prof.	1
ENVD	204	Studio Seminar	1
ENVD	250	History of Designed Environment I	3
MATH	100	College Algebra	3
COMM	106	Public Speaking 1	3
		*General Elective	2
			17

SECOND SEMESTER

ENVD	202	Environmental Design Studio II	4
ENVD	251	History of Designed Environment II	3
PHYS	115	Descriptive Physics	5
ENGL	100	Expository Writing I	3
			15

INDUSTRIAL DESIGN PROGRAM

THIRD SEMESTER

INDD	307	INDD Design Studio I	5
INDD	325	Human Factors in Industrial Design	3
IAID	430	Visual Communication I	3
IAID	290	Design & Material Culture	3
IAID	299	History of Furniture	3
			17

FOURTH SEMESTER

INDD	320	INDD Design Studio II	5
INDD	350	Product Semantics	3
INDD	500	Materials & Manufacturing Processes	3
IAID	407	Furniture Design I	4
IAID	431	Visual Communication II	3
			18

FIFTH SEMESTER

INDD	435	INDD Design Studio III	5
INDD	310	INDD Digital Applications	2
INDD	520	Materials & Manufacturing Processes II	3
IAID	432	Visual Communication III	3
IAID	602	Furniture Design II	4
			17

SIXTH SEMESTER

INDD	440	INDD Design Studio IV	5
INDD	433	UI/UX Design	3
INDD	600	Professional Practice	3
LAR	211	Unlocking Creativity [OR ENG 455]	3
ENGL	200	Expository Writing II	3
			17

SUMMER OPTIONS (PICK ONE COLUMN --- TO BE COMPLETED AFTER SIXTH OR EIGHT SEMESTER)

INDD	664	INDD Summer Internship	6	Study Abroad	7	OR	**Focus Courses	7	7
INDD	665	INDD Summer Internship Report	1						
			7						

SEVENTH SEMESTER

Option 1: on campus or KCDC or study abroad

INDD	606	INDD Design Studio V	5
		***Electives	9
			14

OR

Option 2: Internship

INDD	644	INDD Internship	9
INDD	645	INDD Internship Report	5
			14

NINTH SEMESTER

INDD	810	INDD Capstone Studio	6
INDD	815	Advanced Studio Programming	3
ENTRP	300+	[Any ENTRP course 300 or above]	3
		*General Elective	6
			18

EIGHTH SEMESTER

INDD	801	INDD Design Studio VI	5
INDD	811	Design Research	3
IAID	814	Furniture Design III	4
ENTRP	340	Business Innov. & Entrepreneurial Mindset	3
			15

TENTH SEMESTER

INDD	822	Advanced Industrial Design Studio	6
		OR	
IAID	824	Advanced Furniture Design Studio	6
IAID	891	Contemporary Design Seminar	3
		*General Elective	6
			15

*A minimum of fourteen (14) general elective credits must be taken. General electives may be taken in pursuit of a minor. They may be taken any time prior to or during the Industrial Design program and may include K-State approved AP, IB, CLEP, K-State Core if selected, and transfer credit. Students may not count more than three (3) total hours of recreation credits toward graduation.

**Focus Course includes INDD 605, as well as other department head approved courses, including those associated with a minor program. Petition process required.

***Electives taken in the seventh semester should support student interest including professional electives and study abroad courses. These may also be associated with a minor program.

KANSAS STATE
UNIVERSITY

College of Architecture,
Planning & Design

IARC

•170•

TOTAL HOURS REQUIRED
FOR GRADUATION
(INCLUDING ENVD PROGRAM)

CURRICULUM GUIDE

Setting a path for your future education

MASTER OF INTERIOR ARCHITECTURE 2024

ACCREDITED BY THE COUNCIL OF INTERIOR DESIGN ACCREDITATION
AND APPROVED BY THE NATIONAL ASSOCIATION OF SCHOOLS OF ART & DESIGN

ENVIRONMENTAL DESIGN STUDIES PROGRAM

FIRST SEMESTER

ENVD	201	Environmental Design Studio I	4
ENVD	203	Survey of Design, Plan. & Comm.Dev. Prof.	1
ENVD	204	Studio Seminar	1
ENVD	250	History of Designed Environment I	3
MATH	100	College Algebra	3
COMM	106	Public Speaking 1	3
		*General Elective	2
			17

SECOND SEMESTER

ENVD	202	Environmental Design Studio II	4
ENVD	251	History of Designed Environment II	3
PHYS	115	Descriptive Physics	5
ENGL	100	Expository Writing I	3
			15

INTERIOR ARCHITECTURE PROGRAM

THIRD SEMESTER

IARC	307	IARC Design Studio I	5
IARC	248	Fundamentals of Arch. Technology	3
IAID	430	Visual Communication I	3
IAID	299	History of Furniture	3
IAID	290	Design and Material Culture	3
			17

FOURTH SEMESTER

IARC	320	IARC Design Studio II	5
IAID	431	Visual Communication II	3
ARCH	347	Structural Systems in Arch. I	4
ARCH	433	Bldg. Const. Systems in Arch. I	3
ENGL	200	Expository Writing II	3
			18

FIFTH SEMESTER

IARC	435	IARC Design Studio III	5
IARC	310	IARC Digital Applications	2
IARC	409	Material and Finishes	3
ARCH	413	Environmental Systems in Arch. I	4
ARCH	448	Structural Systems in Arch. II	4
			18

SIXTH SEMESTER

IARC	440	IARC Design Studio IV	5
IAID	407	Furniture Design I	4
IARC	625	Lighting	3
IARC	628	Construction Documentation	3
ARCH	514	Environmental Systems in Arch. II	3
			18

SUMMER OPTIONS (PICK ONE COLUMN --- TO BE COMPLETED AFTER SIXTH OR EIGHT SEMESTER)

IARC	664	IARC Summer Internship	6	Study Abroad	7	OR	**Focus Courses	7
IARC	665	IARC Summer Internship Report	1					
			7					

SEVENTH SEMESTER

IARC	801	IARC Design Studio V	5
IAID	602	Furniture Design II	4
IARC	811	Design Research	3
IAID	753	Prof. Prac.: Prof. Responsibility	1
IAID	754	Prof. Prac.: Office Practices	1
IARC	755	Prof. Prac.: Disc. Specific Topics	1
			15

EIGHTH SEMESTER

Option 1: on campus or KCDC or study abroad			
IARC	606	IARC Design Studio VI	5
		***Electives	9
			14
Option 2: Internship			
IARC	644	IARC Internship	9
IARC	645	IARC Internship Report	5
			14

NINTH SEMESTER

IARC	810	IARC Capstone Studio	6
IAID	814	Furniture Design Studio III	4
IARC	815	Advanced Studio Programming	3
		* General Electives	3
			16

TENTH SEMESTER

IARC	823	Advanced IARC Design Studio	6
		OR	
IAID	824	Advanced Furniture Design Studio	6
IAID	891	Contemporary Design Seminar	3
		*General Elective	6
			15

*A minimum of eleven (11) general elective credits must be taken. General electives may be taken in pursuit of a minor. They may be taken any time prior to or during the Interior Architecture program and may include K-State approved AP, IB, CLEP and transfer credit. Students may not count more than three (3) total hours of recreation credits toward graduation.

**Focus Courses include such courses as IARC 605 Problems in IARC courses, as well as other department head approved courses, including those associated with a minor program.

***Electives taken in the eighth semester should support student interest including professional electives and study abroad courses. These may also be associated with a minor program.

KANSAS STATE
UNIVERSITYCollege of Architecture,
Planning & Design

LA

•153•

TOTAL HOURS REQUIRED
FOR GRADUATION
(INCLUDING ENVD PROGRAM)

CURRICULUM GUIDE

Setting a path for your future education

MASTER OF LANDSCAPE ARCHITECTURE 2024 (Master's Report Option)

ACCREDITED BY THE LANDSCAPE ARCHITECTURAL ACCREDITATION BOARD

ENVIRONMENTAL DESIGN STUDIES PROGRAM

FIRST SEMESTER

ENVD	201	Environmental Design Studio I	4
ENVD	203	Survey of Design, Plan. & Comm.Dev. Prof.	1
ENVD	204	Studio Seminar	1
ENVD	250	History of Designed Environment I	3
MATH	100	College Algebra	3
COMM	106	Public Speaking 1	3
		*General Elective	2
			17

SECOND SEMESTER

ENVD	202	Environmental Design Studio II	4
ENVD	251	History of Designed Environment II	3
PHYS	115	Descriptive Physics	5
ENGL	100	Expository Writing I	3
			15

LANDSCAPE ARCHITECTURE PROGRAM

THIRD SEMESTER

LAR	220	Drawing Landscapes Studio	5
LAR	230	Modeling Landscapes Studio	5
LAR	101	Introduction to Landscape Architecture	3
LAR	350	Plants & Design	3
LAR	010	Travel: Regional 1	0
			16

FOURTH SEMESTER

LAR	433	Landscape History and Design Studio	5
LAR	420	Socio-Ecological Systems Studio	5
LAR	298	Ethics and Environmental Dilemmas	3
LAR	020	Travel: Regional 2	0
ENGL	200	Expository Writing II	3
			16

SUMMER SEMESTER

LAR	430	Narratives and Placemaking Studio	4
LAR	425	Narratives and Placemaking Seminar	2
PLAN	115	Intro to Regional and Community	3
LAR	030	Planning	0
			9

SIXTH SEMESTER

LAR	646	Community Engagement Studio	5
LAR	439	Master Plan Design and Implementation	5
LAR	050	Travel: Major City 2	0
		*General Elective	3
			13

FIFTH SEMESTER

LAR	442	Site Research and Design Studio	5
LAR	438	Site Design Implementation	5
LAR	040	Travel: Major City 1	0
LAR	444	Career and Academic Planning	3
LAR	352	Landscape Performance Lab	3
			16

SEVENTH SEMESTER

LAR	740	Advanced Studio	5
LAR	725	Research Methods	3
LAR	750	Advanced Seminar	3
LAR	754	Prof. Prac.: Office Practices	1
		***Professional Elective	3
			15

EIGHTH SEMESTER**

KCDC or Study Abroad Option:			
LAR	703	Off-Campus Studio	5
		Professional Electives	9
Internship Option:			14
LAR	703	Off-Campus Studio	5
LAR	655	LA Professional Internship	9
			14

NINTH SEMESTER

LAR	705	Master's Project Studio 1	5
LAR	897	Proposal Writing	2
LAR	753	Prof. Prac.: Prof. Responsibility	1
		***Professional Elective	3
			11

TENTH SEMESTER

LAR	710	Master's Project Studio 2	3
LAR	898	Master's Report	2
		***Professional Electives	6
			11

All required courses in the Landscape Architecture program that are counted toward the degree must be passed with a grade of C or better.

*A minimum of 5 general elective credits must be taken. General electives may be taken in pursuit of a minor. They may be taken any time before or during the Landscape Architecture program and may include K-State-approved AP, IB, CLEP and transfer credit. Students may count a maximum of 3 credit hours for recreation courses and 3 credit hours for English Language Program courses toward graduation.

**Off-campus semester: Two distinct study opportunities are offered, each requiring 14 credit hours. The study abroad and the internship options have course requirements that substitute for the 9 professional elective credit requirements. If the internship option is not selected during the seventh or eighth semester, a summer internship is required before graduation.

***Six credit hours of the required graduate-level professional electives shall be LAR courses. Students may petition for an exception to this policy if there is a demonstrated academic benefit.

Graduate School admission is contingent upon completion of all required courses in the third through sixth semesters. Courses shown in **bold** are taken for graduate credit.

KANSAS STATE
UNIVERSITY

College of Architecture,
Planning & Design

RCP

•138•

TOTAL HOURS REQUIRED
FOR GRADUATION
(INCLUDING ENVD PROGRAM)

CURRICULUM GUIDE

Setting a path for your future education

MASTER OF REGIONAL & COMMUNITY PLANNING 2024 (Master's Report Option)

ACCREDITED BY THE PLANNING ACCREDITATION BOARD

ENVIRONMENTAL DESIGN STUDIES PROGRAM

FIRST SEMESTER

ENVD	203	Survey of Design, Plan. & Comm.Dev. Prof.	1
MATH	100	College Algebra	3
COMM	106	Public Speaking 1	3
		Humanities/Design Elective	3
		Social Science/History Elective	3
		Social Science/Sociology Elective	3
			16

SECOND SEMESTER

ENGL	100	Expository Writing I	3
		Humanities/Design Electives	6
		Natural Science Elective with Lab	4
		*General Elective	2
			15

REGIONAL & COMMUNITY PLANNING PROGRAM

THIRD SEMESTER

PLAN	115	Intro to Regional and Community Planning	3
PLAN	320	Community Development Field Workshop	3
GEOG	302	Cartography	3
		Social Science/Economics Elective	3
		*General Elective	3
			15

FOURTH SEMESTER

PLAN	215	World Cities	3
LAR	298	Ethics and Environmental Dilemmas	3
ENGL	200	Expository Writing II	3
GEOG	508	Geographic Information Systems I	4
		*General Elective	3
			16

FIFTH SEMESTER

PLAN	640	Urban Design & Development	3
PLAN	510	Graphic Comp. & Representation for Planning	2
PLAN	444	Career Planning Seminar	2
PLAN	010	Field Trip 1	0
		*General Elective	3
		*General Elective	3
			13

SIXTH SEMESTER

PLAN	703	Off-Campus Studies (internship or study abroad or KCDC)	5
		Professional Electives	9
			14

SEVENTH SEMESTER

PLAN	720	Infrastructure and Plan Implementation	3
PLAN	801	Knowledge Methods	3
PLAN	707	Writing and Thinking the City	3
		Professional Elective**	3
			12

EIGHTH SEMESTER

PLAN	897	Proposal Writing	3
PLAN	836	Plan Making	5
PLAN	812	Planning Theory and Law	3
LAR	500	Site Planning and Design	3
PLAN	020	Planning Field Trip 2	0
			14

NINTH SEMESTER

PLAN	730	Planning Professional Practice	3
		Professional Elective**	3
		Professional Elective**	3
		Professional Elective**	3
			12

TENTH SEMESTER

PLAN	705	Master's Project	3
PLAN	898	Master's Report	2
		Professional Elective**	3
		Professional Elective**	3
			11

*A minimum of fourteen (14) general elective credits must be taken. General electives may be taken in pursuit of a minor. They may be taken any time prior to or during the Regional and Community Planning program and may include KSU approved AP, IB, CLEP and transfer credit. Students may not count more than three (3) total hours of recreation credits toward graduation.

** Professional Electives must include 6 graduate credit hours of PLAN courses. Students may petition for an exception if they have a demonstrated academic benefit.

All required courses taught in the Landscape Architecture and Regional & Community Planning Programs that are counted toward the degree must be passed with a grade of C or better.

Courses listed in **bold** type represent those hours required within the graduate program. Total graduate credit hours is 46.

KANSAS STATE
UNIVERSITY

College of Architecture,
Planning & Design

COMMITTED TO YOUR PROFESSIONAL GOALS

APDPro

APDPro is a professional development program offered to you as an APDesign student. The mission of APDPro is to enhance your experience and provide you with a competitive advantage as you transition to the workplace. The programs offered to you through APDPro will give you the career skills employers are looking for via workshops, lectures, seminars, professional mentoring and networking opportunities.

- More than 60% of APDesign students participate in APDPro each year.
- For more information on APDPro, please visit apdesign.k-state.edu/apd-pro.

97% of APDesign graduates are employed or furthering their education within six months of graduation.



APDPRO MENTOR PROGRAM

APDPro students can be paired with a professional mentor in their second year through the APDPro Mentor Program. These mentors are alumni and friends of the university with expertise in design, planning and related fields. For more information, please visit apdesign.k-state.edu/mentor.



DESIGNEXPO

DesignExpo is APDesign's career fair. Firms from across the U.S. send representatives to meet with and provide information to our talented students about job and internship opportunities. DesignExpo is a time for students to showcase their skills and portfolios and get feedback from professionals.



CAREER SKILLS

To help students prepare for their future careers, APDesign partners with K-State's Career Center to offer various career preparation activities. Each year, students can participate in portfolio reviews and resume workshops. Additionally, mock interviews held each fall provide upper-level students with the opportunity to interview with representatives from design and planning firms and receive constructive feedback.



LECTURES AND EXHIBITIONS

Lecturers from around the world come to APDesign each year to share their expertise and work with students. The interior design program hosts an annual symposium. Additionally, the Chang and Cassias galleries in the Seaton Complex showcase various exhibitions, offering students opportunities for exploration and knowledge enhancement.

A WORLD OF POSSIBILITIES

APDesign alumni practicing architecture, industrial design, interior architecture, interior design, landscape architecture, real estate & community development and planning enjoy a variety of specializations throughout their careers, such as:

Game design/animation ▪ Set design ▪ Graphic design ▪ Fabrication/manufacturing ▪ Theme park design ▪ Furniture design/construction
▪ Software development ▪ Clothing/shoe design ▪ Housewares design ▪ Facilities management ▪ Real estate development ▪
Transportation planning ▪ Stormwater management ▪ Educator/academic leadership ▪ Natural resource management ▪ Lighting design
▪ Ecological restoration ▪ Park planning/design ▪ Luxury ship and yacht design ▪ Exhibit/retail display design ▪ Visual effects art ▪ Event
venue design ▪ Aircraft interior design ▪ Downtown vitality and Chamber of Commerce development

THE APDesign CONNECTION

APDesign alumni provide experience and networking opportunities that help our current students thrive through philanthropy, advocacy and direct engagement. Check out some of our successful alumni and their accomplishments during their time at K-State.



Brynn Alloway (*BS IDSN '20*)

Interior Designer | Associate, DLR Chicago
Designed a headquarters for Manhappenin' Magazine, K-State's student-run lifestyle publication for her capstone project.



Kye Kordonowy (*BS RECD '24*)

Community Development Coordinator, Habitat for Humanity of the Northern Flint Hills
Establishing resource and community building programs to continue the outreach and connections Habitat for Humanity has with the Greater Northern Flint Hills Region.



Samantha McCloud AIA, NCARB (*MARCH '13*)

Architect | Design Manager, Gensler
Founding president of K-State's Women in Design organization.



Garrett Steinlage NCIDQ (*MIAPD '17*)

Associate | Product Manager, Populous
Co-designed "Roo" as a student, an award-winning occasional table developed in an industry partnership with OFS, a national manufacturer of furniture.



Dustin McDermott (*MINDD '23*)

Co-owner | Director of Design & Marketing, Thomahawk Custom Cabinetry
Spearheads client interactions, overseeing design, development, and quality control, and drives marketing strategy.



Nick Mercado (*MLA '15*)

Senior Landscape Designer
ONE Architecture
Built custom steel art for ICT Pop-Up Urban Park, a food truck park in downtown Wichita.



Samantha Estabrook (*AICP, MRCP '19*)

Planner and Founder | Ope Works
Engaged in revisioning projects for the cities of Manhattan and Marysville.



7,700+

APDesign alumni



50

States where alumni are living their dreams
(plus Washington, D.C., and Puerto Rico)



55

Countries where alumni work

ESTIMATED FIRST-YEAR STUDENT BUDGET

Prepare financially for the future

2024-2025 Undergraduate expenses		
	Kansas resident <small>LIVING ON CAMPUS</small>	Non-Kansas resident** <small>LIVING ON CAMPUS</small>
Billed expenses		
Tuition and mandatory fees	\$11,903.92	\$30,407.28
APDesign Fee (\$55 per credit hour, 9 credits in the fall, 7 credits in the spring) ***	\$880	\$880
On-campus housing* and food* (3 meals/day)	\$12,830	\$12,830
Total billed expenses	\$25,613.92	\$44,117.28
Other estimated costs		
Books, supplies and field trips	\$1,800	\$1,800
Transportation	\$1,152	\$1,152
Personal costs	\$3,060	\$3,060
Total other estimated costs	\$6,012	\$6,012
Total expenses (BILLED AND OTHER)	\$31,967.34	\$51,048.93

* First-year students are required to live on campus. This estimate is based on the median of on-campus housing at K-State. Options range in cost from \$5,660-\$9,650. *Food options for meal plans range from \$2,290-\$5,140.

**To learn more about the Wildcat Nonresident Award, visit k-state.edu/scholarships.

***This fee will vary by major.

Missouri residents may qualify for in-state tuition. To learn more, visit apdesign.k-state.edu/missouri-tuition.

PURCHASING A COMPUTER

First-year students in environmental design studies and interior design will not need a computer in studio. We do not recommend purchasing your required computer until the end of first year. Incoming bachelor's in real estate & community development students will need a computer. The Office of Student Financial Assistance can help determine if additional aid is available when you need to purchase your computer.

FIFTH-YEAR FELLOWSHIP

Students in the five-year master's degree programs have the opportunity to apply for a Fifth-Year Fellowship. The goal of the fellowship is to eliminate the majority of tuition cost for a student during the fifth year of study. In some cases, a Fifth-Year Fellowship may be awarded for tuition, fees and housing. **In 2025, we expect to award more than 70 Fifth-Year Fellowships, and that number grows each year!**

SCHOLARSHIPS / AWARDS - PRIORITY DATE DEC. 1

You are encouraged to complete the university's admission application each year to be considered for university, college and departmental scholarships. APDesign awards college and department-level scholarships based on eligibility requirements established by the scholarship donor(s). These scholarships are made available through the generosity of alumni and friends of APDesign. More information about university scholarships and the application for scholarships can be found at k-state.edu/scholarships.

APPLY TO BECOME AN APDesign STUDENT

APPLICATION DEADLINES

DEC. 1

For priority consideration
into APDesign and general
university scholarships/awards

FEB. 1

Final deadline for consideration
into the College of Architecture,
Planning & Design

APPLY TO KANSAS STATE UNIVERSITY

Visit the undergraduate admissions page at
k-state.edu/apply.

- **Choose one of the selective programs in APDesign as your intended major on the K-State application.**

(Architecture, Industrial Design, Interior Architecture, Interior Design, Landscape Architecture or Regional & Community Planning)

- **Pay the university's application fee.**

- **Provide academic information.**

The self-reported GPA and ACT or SAT scores provided on the application to K-State will be used for preliminary review. High school students should send official transcripts to k-state@k-state.edu or unofficial transcripts to myapd@k-state.edu for complete review of their applications. **Transfer students must send all official college transcripts, including the most recent coursework and grades, to the K-State Office of Recruitment and Admissions.**

BASIS FOR ADMISSION DECISIONS

Admission decisions for high school students will be based on cumulative high school GPA. Admission decisions for transfer students will be based on cumulative college GPA.

Early acceptance to APDesign

If you apply before the Dec. 1 deadline and have a 3.7 GPA or above, you will be offered early admission to APDesign. If you do not meet the requirements for early admission, your application will be reviewed, and you will be notified of the admission decision in early March. If you are curious about how competitive you are for admission, please reach out to us at myapd@k-state.edu.

Real Estate & Community Development Program

The bachelor's degree in real estate & community development is not a selective program. Students will need to meet K-State admission requirements. For more info, please visit k-state.edu/freshmen-requirements.

FOR MORE INFORMATION

APDesign Director of Student Recruitment

1127 Regnier Hall
920 N. MLK Jr. Drive
Manhattan, KS 66506-2902
P: 785-532-1994
myapd@k-state.edu
[apdesign.k-state.edu](mailto:myapd@k-state.edu)

Undergraduate Admissions

Kansas State University
119 Anderson Hall
919 Mid-Campus Drive North
Manhattan, KS 66506
P: 785-532-6250
apply@k-state.edu
[k-state.edu/admissions](mailto:apply@k-state.edu)

Office of Student Financial Assistance

Kansas State University
220 Anderson Hall
919 Mid-Campus Drive North
Manhattan, KS 66506
P: 785-532-6420
finaid@k-state.edu
[k-state.edu/finaid](mailto:finaid@k-state.edu)

Cashiers and Student Accounts

Kansas State University
211 Anderson Hall
919 Mid-Campus Drive North
Manhattan, KS 66506
P: 785-532-6317
F: 785-532-6454
cashiers@k-state.edu
[k-state.edu/pay](mailto:cashiers@k-state.edu)

Housing and Dining Services

Kansas State University
104 Pittman Building
1531 Mid-Campus Drive North
Manhattan, KS 66506
Toll free : 888-568-5027
P: 785-532-6453
housing@k-state.edu
[housing.k-state.edu](mailto:housing@k-state.edu)

.....
 **LEARN MORE:**
apdesign.k-state.edu

 **APPLY FOR ADMISSION &
SCHOLARSHIPS:**
k-state.edu/apply

 **FACEBOOK:**
[APDesignKState](https://www.facebook.com/APDesignKState)

 **X/TWITTER:**
[APDesignKState](https://twitter.com/APDesignKState)

 **INSTAGRAM:**
[APDesignKState](https://www.instagram.com/APDesignKState)

APDESIGN

THE COLLEGE of
ARCHITECTURE, PLANNING & DESIGN // K-STATE

apdesign.k-state.edu