

**KANSAS STATE**  
UNIVERSITY

College of Architecture,  
Planning & Design

# YOUR FUTURE





# COLLEGE OF ARCHITECTURE, PLANNING & DESIGN

## OUR BUILDING

As a student in the College of Architecture, Planning & Design, you will be attending classes in a beautiful, historic space with modern classrooms, design laboratories and educational resources. A renovation and new building project, completed in fall 2017, further combines history and modern space.

The new Seaton/Regnier Complex dates from the early 20th century. The history of these beautiful limestone buildings in the center of the Kansas State University Manhattan campus is a daily reminder of our land-grant heritage for our students and faculty.

The new Seaton/Regnier Complex is a teaching tool and home to our studios, labs and workshops.

Studios are the place where you will learn and perfect your skills like drawing and model-making. The studio culture also helps students understand the value and organization of space.

### Features of the building:

- 49 design studios in 21 multidisciplinary laboratory spaces.
- 300-person lecture hall with 4K laser projection and conferencing capability.
- 17 dedicated critique spaces and 18 informal critique/collaboration spaces.
- More than 50 fully integrated 70- to 84-inch conferencing video monitors.
- Six indoor 24-hour lounge/collaboration spaces.
- Balcony and rooftop gathering areas with green roofs.
- Library with flex reading room, quiet reading area, group study space, special collections and exterior reading courtyard.
- Exterior courtyard and amphitheater.
- 20,000 square feet of fabrication space, including a large outdoor fabrication yard with 24-hour access to laser cutters and 3D printers.
- LEED Silver classification.
- All new furnishings, including a dedicated studio desk and premium chair for each student.
- After-hours key card security access to the building and labs.



Photography courtesy of Hursley and Kansas State University



A photograph of two students in an architectural studio. A woman with glasses and a light blue sweater is pointing at a small wooden model held by a man wearing a black hoodie and a grey baseball cap. They are standing behind a large, detailed architectural model on a table, which includes miniature trees and building structures. The background wall is covered with various architectural drawings and sketches.

# COLLABORATION. CRITICAL THINKING. COMMUNITY ENGAGEMENT.

## ARE YOU THE NEXT CITIZEN ARCHITECT, INNOVATOR IN DESIGN, SHAPER OF CITIES?

K-State students, faculty and staff form a unique learning community joined together in diversity of thought, identities and backgrounds. This passionate community is united in solving global challenges that affect the futures and well-being of our societies.

By harnessing the collective power of technology, innovative learning, discovery and engagement, the College of Architecture, Planning & Design aims to empower its students to positively shape the way human beings interact among themselves and their environments.

As an APDesign student, you will find opportunities to collaborate across several disciplines with your classmates, design and planning professionals and communities to shape societies and make intelligent decisions about our present and our future.

These opportunities and the commitment to building a better world embody the K-State community and its core values. As the nation's first operational land-grant university, we hold ourselves to high standards in the name of dedication, service and building resilience against the odds.

Our mission is to empower our students to courageously live, learn and grow to their full potential to help advance society and pursue all possibilities.

We invite you, the passionate explorers, the game-changers, the critical thinkers and curious minds, to focus your creative talents on answering the questions of today and finding solutions for tomorrow's challenges.

**APDESIGN AVERAGE STUDENT  
TO FACULTY RATIO IS 16:1**



# THE APDESIGN EXPERIENCE

## Hands-on Education

Thinking ■ Making ■ Doing

### THE APDESIGN DIFFERENCE

As an APDesign student, you'll work alongside students in all design and planning disciplines. You will not only design and plan, but also build and fabricate. As a student at one of the most affordable and highly ranked programs in the nation, you will receive an educational experience preparing you for excellence in your chosen career path.



### CULTURE

Studio forms the core — the heart and soul — of the APDesign student experience. You will have the opportunity to work with students in all the design and planning professions, which is the foundation for building lasting friendships and professional colleagues. The shared experience is engaging, interactive, powerful and fun!

Our building and design labs are secure and accessible to APDesign students 24/7. You will spend hours creating work that exceeds your initial expectations of yourself and your professor, and build lasting memories with your friends along the way.

### DIGITAL TECHNOLOGY

Computer access and knowledge are vital to your success. For that reason, we strive to offer the most up-to-date design software and programs through constant research and inquiry into the digital tools needed in the professions. Video conferencing technology allows you to connect anytime with practice leaders and experts from across the world. Our degree programs will provide you with the digital knowledge and tools necessary to enter the professional world.



### WEIGEL LIBRARY

The Paul Weigel Library provides professional assistance and access to materials that enhance teaching, learning and research endeavors of the students, faculty and staff of the college.

You'll have access to books, periodicals and visual resources that cover or relate to all four college disciplines without ever leaving the building:

- 43,000+ volumes and 34,000+ titles
- 85 print periodicals
- 1,175+ rare and fragile resources in our special collections
- Visual resources, online journals and databases
- Open 77 hours a week during the academic year

### DESIGN+MAKE AND COMMUNITY ENGAGEMENT

Design+Make is part of our culture. The opportunity to apply knowledge and skills gained in courses to the direct implementation or future vision for of a product, furniture, urban design, landscape site or building will further enhance your education. Many programs feature opportunities to work with real communities, making an impact.



### FAB LAB

Your hands-on education is taken to a new level when you step into the 20,000 square feet of Fabrication Labs. The Fab Labs are beautifully designed to encourage and support your exploration and fabrication of design solutions. You will work with teaching technicians and fellow students in a state-of-the-art facility featuring an amazing array of equipment and machines.

## PREPARED FOR ANY PROJECT

### Design Research Resources

#### Production

**Fabrication Lab:**

- Contains a variety of general purpose fabrication equipment and tools.
- Large-bed industrial CNC router.
- Plastic thermo-former.

**Fine Woodworking Lab:**

- A variety of traditional woodworking machines and tools.

**Small CNC lab:**

- Three small CNC routers for intricate detailing and joinery.

**Upholstery Lab:**

- High-end sewing machines for a variety of fabrics and materials.

**Glass Lab:**

- Kiln for molding and forming glass.

**Metals Lab:**

- Contains a large bed CNC plasma cutter.
- Variety of sheet metal and bending equipment.
- Large milling machine and lathe.
- Also offers MIG, TIG, stick and spot welding.

**3D Print Lab:**

- Contains 13 — and counting — 3D printers.

**Model-Making Lab:**

- A dedicated space for intricate models and small prototypes.

**Center for Design Excellence:**

- A large, open space for special design projects, assembly, research and exhibits.

**Spray Finish Lab:**

- Industrial spray booth for safely applying high-end finishes and paints.

#### Visualization

20-foot panoramic screen  
Oculus Rift and VIVE virtual reality headsets  
Immersion and Visualization Environment  
Heliodon solar analysis

#### Testing

Environmental Envelope Lab  
Fluvial Lab  
Four experimental green roofs at Memorial Stadium, Seaton Hall, Regnier Hall  
The Meadow research site  
Rain garden research site



# THE APDESIGN EXPERIENCE

## Explore the World

Part of our mission is to expose you to as many places and opportunities as possible to enrich your learning. From the beginning, all students travel to places with exemplary design, often in conjunction with your current projects. First-year students sketch and observe at the Nelson Atkins Museum of Art in Kansas City, Missouri, and at Frank Lloyd Wright's Allen House in Wichita, Kansas. Travel beyond the first year includes visiting professional environments such as design firms, showrooms, manufacturers and state-of-the-art green infrastructures. Our students and faculty have most recently visited the following places:

- Boston, MA
- Chicago, IL
- Columbus, IN
- Dallas-Fort Worth, TX
- Denver, CO
- Grand Rapids, MI
- Los Angeles, CA
- New York City, NY
- Portland, OR
- San Diego, CA
- San Francisco, CA
- Seattle, WA
- Washington, D.C.

Some field trips and faculty-led study tours are abroad. APDesign students have visited Canada, China, Japan, Norway, Scandinavia, South Korea and Switzerland, in recent years.

### MAKE A DIFFERENCE

You will have the opportunity to use your knowledge and skills to impact the future of our communities in a variety of ways. Service learning is a fundamental part of our education and you participate through studio as well as a student organizations.

### EXPERTS FROM AROUND THE WORLD COME TO APDESIGN

We bring the world to you by inviting experts to join us in person and virtually to participate in critiques of your projects, partner in sponsored studios, give lectures and much more. The Ekdahl Distinguished Lecture Series brings eight outstanding lectures to campus each year in addition to several department-specific lectures and guests, enhancing your experience as a student in APDesign.

## OFF-CAMPUS LEARNING

We want you to spend time away from campus augmenting your education through a semester or summer experience of education abroad, professional internship and/or the Kansas City Design Center.



### EDUCATION ABROAD

Students have opportunities to study abroad, usually later in their academic career. APDesign collaborates with study abroad programs in Italy, Australia, Germany, Czech Republic, Denmark and other exciting locations. Studying abroad affords students new and varied opportunities to study design and planning in different venues.



### INTERNSHIP

Internship opportunities at design and planning firms allow students to spend a semester and/or summer experiencing what it might be like to work in the allied design professions. We help students identify internships that align with their interests in firms across the nation and around the world.



### KCDC

Located in the heart of downtown Kansas City, the Kansas City Design center, or KCDC, is a nationally recognized partnership of local civic leaders, professional designers, and design/planning students and faculty. KCDC engages students in a learning laboratory that actively explores Kansas City's future development.

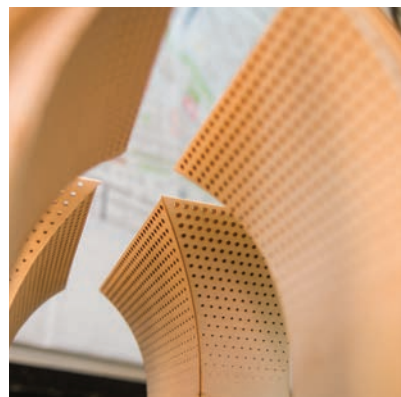
## GET INVOLVED

- American Institute of Architecture Students
- American Society of Landscape Architects Student Chapter
- APDesign Digital Fabrications Club
- APDesign Plot Club
- Architecture Student Advisory Board
- Dean's Student Advisory Council
- Industrial Designers Society of America
- Interior Architecture Student Council
- International Interior Design Association
- National Organization of Minority Architecture Students
- Oz — Student Journal
- Student Planning Association
- Tau Sigma Delta
- Women in Design



# WHAT DEGREE IS RIGHT FOR ME?

Our community of faculty and students from different backgrounds provides an enriched experience for everyone.



## I DO NOT HOLD A BACHELOR'S DEGREE

*High school graduates and transfer students  
5-year master's degrees | Nonbaccalaureate degree*

### MASTER OF ARCHITECTURE\*

Learn to think, design, shape, make and advocate for a better world.

**139** Undergraduate credit hours

**31** Graduate credit hours

**170** Total credit hours required

*Accredited by the National Architectural Accredited Board, or NAAB. Learn more about accreditation at [naab.org](http://naab.org) and professional licensing at [ncarb.org](http://ncarb.org).*

### MASTER OF INDUSTRIAL DESIGN

Create products that have a lasting effect on people.

**139** Undergraduate credit hours

**31** Graduate credit hours

**170** Total credit hours required

*Approved by the National Schools of Art and Design. Learn more at [nasad.arts-accredit.org](http://nasad.arts-accredit.org).*

### MASTER OF INTERIOR ARCHITECTURE

Create furniture, products and spaces that transform the interior world.

**139** Undergraduate credit hours

**31** Graduate credit hours

**170** Total credit hours required

*Accredited by the Council for Interior Design Accreditation and approved by the National Schools of Art and Design. Learn more about accreditation at [accredit-id.org](http://accredit-id.org) and [nasad.arts-accredit.org](http://nasad.arts-accredit.org) and the National Council for Interior Design Qualification at [cidq.org](http://cidq.org).*

### MASTER OF LANDSCAPE ARCHITECTURE\*

Design places that connect people to the natural world.

**119** Undergraduate credit hours

**34** Graduate credit hours

**153** Total credit hours required

*Accredited by the Landscape Architectural Accreditation Board. Learn more about accreditation at [asla.org/accreditationlaab.aspx](http://asla.org/accreditationlaab.aspx) and professional licensure at [clarb.org/take-the-exam/check-eligibility](http://clarb.org/take-the-exam/check-eligibility).*

### MASTER OF REGIONAL & COMMUNITY PLANNING\*

Remake cities into dynamic places to live, work and play.

**92** Undergraduate credit hours

**46** Graduate credit hours

**138** Total credit hours required

*Accredited by the Planning Accreditation Board. Learn more about accreditation at [planningaccreditationboard.org](http://planningaccreditationboard.org) and professional certification at [planning.org/certification](http://planning.org/certification).*

## I HOLD A BACHELOR'S DEGREE

*But not necessarily in the design/planning professions  
2-3+ year master's degrees | Postbaccalaureate degree*

### MASTER OF ARCHITECTURE\*

(3+ years)

**72** Undergraduate credit hours

**31** Graduate credit hours

**103** Total credit hours required

*Accredited by the National Architectural Accredited Board, or NAAB. Learn more about accreditation at [naab.org](http://naab.org) and professional licensing at [ncarb.org](http://ncarb.org).*

### MASTER OF INTERIOR ARCHITECTURE

(3+ years)

**80** Undergraduate credit hours

**31** Graduate credit hours

**111** Total credit hours required

*Accredited by the Council for Interior Design Accreditation and approved by the National Schools of Art and Design. Learn more about accreditation at [accredit-id.org](http://accredit-id.org) and [nasad.arts-accredit.org](http://nasad.arts-accredit.org), and the National Council for Interior Design Qualification at [cidq.org](http://cidq.org).*

### MASTER OF LANDSCAPE ARCHITECTURE\*

(3+ years)

**53** Undergraduate credit hours

**34** Graduate credit hours

**87** Total credit hours required

*Accredited by the Landscape Architectural Accreditation Board. Learn more about accreditation at [asla.org/accreditationlaab.aspx](http://asla.org/accreditationlaab.aspx) and professional licensure at [clarb.org/take-the-exam/check-eligibility](http://clarb.org/take-the-exam/check-eligibility).*

### MASTER OF REGIONAL & COMMUNITY PLANNING\*

(2 years)

**46** Graduate credit hours

**46** Total credit hours required

*Accredited by the Planning Accreditation Board. Learn more about accreditation at [planningaccreditationboard.org](http://planningaccreditationboard.org) and professional certification at [planning.org/certification](http://planning.org/certification).*

## I HOLD AN ACCREDITED DEGREE

*In one of the design/planning professions  
2-year master's degrees | Post-professional*

### MASTER OF SCIENCE IN ARCHITECTURE\*

Minimum of **30** credit hours

### MASTER OF SCIENCE IN COMMUNITY DEVELOPMENT (ONLINE PROGRAM)

**36** Credit hours required

## PH.D.\*

Designed for students who have earned a master's degree coupled with relevant professional, research or creative work experience.

**60** Credit hours required

For additional information visit  
[apdesign.k-state.edu/academics/phd](http://apdesign.k-state.edu/academics/phd)

## MINOR/CERTIFICATE

Designed for students in APDesign as well as other majors.

### COMMUNITY PLANNING MINOR

**15** Total credit hours required

### COMMUNITY DEVELOPMENT CERTIFICATE (online program)

**12** Total credit hours required

*\*STEM-designated degrees by the U.S. Department of Homeland Security.*

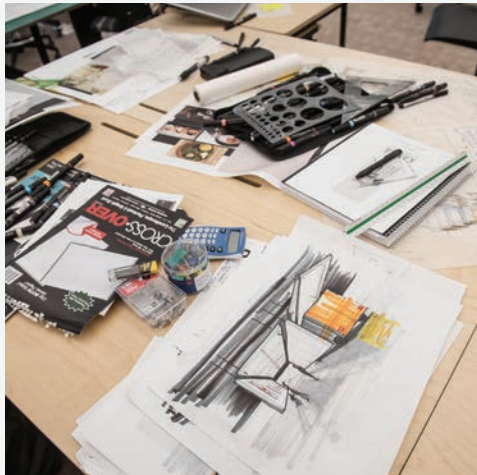


# ENVD: YOUR FIRST YEAR

## Environmental Design Studies Program

The Environmental Design Studies Program is APDesign’s first-year program of study for all students. You will explore the design professions while directly engaging in design work that provides a strong foundation for your design education.

Two ENVD options are available. The studio option leads to a degree in architecture, interior architecture, industrial design, or landscape architecture. The planning option leads to a degree in regional & community planning. Both options provide an introduction to the design and planning professions. For most students, it is an introduction to a new way of seeing and thinking about the environments we occupy.



### FIRST-YEAR STUDENTS TAKE SIX REQUIRED ENVD COURSES:

- Environmental Design Studio I & II *(studio option only)*
- History of the Designed Environment I & II
- Survey of Design Professions
- Studio Seminar

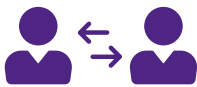
### COLLABORATION

You’ll be surrounded by constant inspiration and support in APDesign. Interact with all year levels and degree programs daily through welcome events before classes begin, getting to know peer educators assigned to each studio section, and informally establishing relationships with upperclassmen sharing your physical design studio space.



#### COORDINATED FIRST-YEAR DESIGN STUDIO

Experience a fast-paced and hands-on first year of design studio that is taught by a highly coordinated and talented team of faculty. Hours of thoughtful planning and continual conversation by our faculty have led to the introduction of design that will set the foundation for your future education.



#### PEER EDUCATORS

Learn from second-through fifth-year students as they work together and serve as peer educators assigned to your first-year studio class.



#### STUDIO SPACE

As an ENVD student you have 24/7 access to your assigned studio space with an ergonomic desk and chair.





# ARCH

## Architecture

The Master of Architecture program trains students to design high-quality buildings, ranging in size from small, single-use structures to large-scale projects such as stadiums, campuses and urban districts. Graduates of our accredited, practice-based approach are well on their way to professional licensure and are in high demand by firms across the country. Alumni have gone on to found and lead major firms nationwide, contributing significantly to the built environment that we all inhabit.

Our curricula provide a holistic examination of architectural design issues, emphasizing not just knowledge, skills and understanding, but a deep relationship with the process of design. The backbone of the sequence is the design studio, where engaged, expert faculty challenge students to develop their own creative approach to the world of architecture. Studio projects utilize a broad range of investigative methods and skills:

- Project conceptualization and programming
- Manual and digital sketching, drafting and rendering
- Model-making, both by hand and with computer-controlled equipment
- Digital fabrication and 3D printing
- Building information modeling, simulation and scripting
- Large-scale prototyping utilizing APDesign's Fabrication Labs
- Visualization, virtual reality, filming and animation

The studio sequence is informed by required courses in the environment and sustainability, building structure and construction, architectural history and theory, up-to-date computer programs and professional practice. Students also explore subjects of interest to them through design and outside electives; many students opt to pursue minors in planning, business and other fields.

### STUDENT OPPORTUNITIES

Traveling to project sites and influential places is integral to K-State's architecture program. As a second-year student, you will travel to Chicago. Then, as a third-year student, you will travel to major cities such as New York, Boston, San Francisco and Seattle. Led by faculty, students visit leading architectural firms, contemporary and historical buildings of importance, and examine critical urban design features.

Fourth-year students have access to extended field study opportunities, including the 30-week architectural internship program and semester education abroad programs in Italy, the Czech Republic, Denmark, Germany and other destinations.

In the final year, you will take graduate-level studios focusing on specific themes such as urban design, public institutions, housing, health and wellness, sports venues, and design-make projects. You may also spend your final year at the Kansas City Design Center.



### Career Opportunities

The Master of Architecture program offers access to a broad array of career paths. Most of our graduates find employment in professional firms, providing a full range of services for clients in the planning, design and administration of construction projects. Our alumni work with a diverse array of clients, with some choosing to focus their services on fields like housing, health care, education or civic projects. As our society grows more complex, new design challenges emerge, opening new career options for architects. Some graduates continue their formal education, opting for careers in research and teaching. Others enter allied fields such as planning, engineering, development, construction, public administration or graphic design. Architecture graduates have the natural skills for theater, film, television and computer rendering, as well as museum curation, journalism, and architectural product and materials manufacturers.

### OUR ALUMNI HAVE



DESIGNED THE  
WORLD'S TALLEST  
BUILDING



DESIGNED NFL, NBA  
AND MLB STADIUMS  
AND ARENAS



WON NATIONAL  
AWARDS FOR  
SUSTAINABLE  
ARCHITECTURE



### Clemente Jaquez '08

"I became an architect because I wanted to have an impact on our communities. At K-State I had the opportunity to design and build structures that responded to natural disasters and pushed for sustainability innovation. From this experience, I have traveled to almost every continent, designing buildings that respond to culture, economy and environment. Today, my most gratifying experience is to design spaces that promote healing and advance our quality of life."

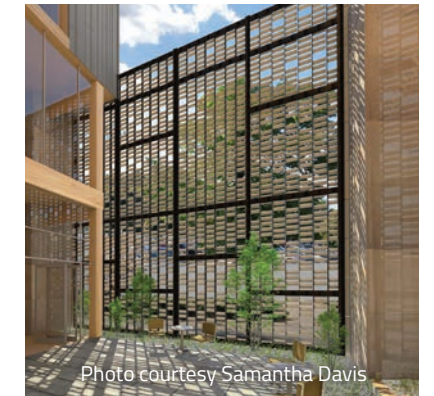


Photo courtesy Samantha Davis

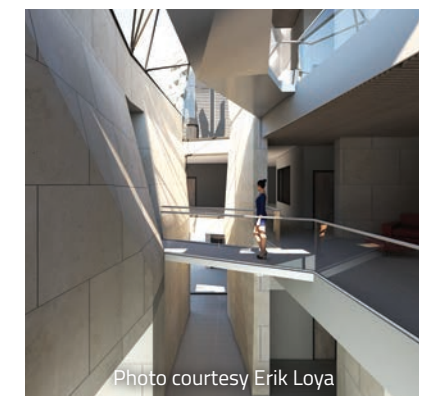


Photo courtesy Erik Loya



Photo courtesy Todd Gabbard

# NAAB

Accredited by the National  
Architectural Accrediting Board



# IARC

## Interior Architecture\*

The Master of Interior Architecture program, or MIARC, provides a comprehensive and vibrant approach to studying design. From (re)constructing building interiors to individual products, our students are grounded in the essential process of inquiry, design and the making of space and form. With an innovative curriculum that combines the two distinct but complementary fields of interior architecture and furniture design, our faculty prepare students to transform society.

### DESIGN AT ALL SCALES

**Interior Architecture:** Our curriculum combines the aesthetic delight and functional needs of architectural design while bringing a specialized approach to the (re)envisioning of interior spaces. You will develop cutting-edge techniques by combining architectural design, lighting, materials, color, furnishing and finishes to produce sophisticated spaces. Learn to consider the aesthetic, social, psychological and behavioral issues affecting design decisions to create unified interiors.

**Furniture Design:** You will gain a hands-on experience in our workshop studios by producing furniture designs in our fully-equipped, state-of-the-art wood, metal, plastic and upholstery labs. Our labs house both traditional equipment and computer numerically controlled, or CNC, manufacturing equipment. Faculty create a safe and creative environment for you to experiment and push boundaries in the designing and making of exquisite custom furniture. You will also have the opportunity to work directly with the contract furniture industry in bringing their designs to the marketplace. Work with our faculty to gain valuable insight into materials, building processes and superior craftsmanship.

### STUDENT OPPORTUNITIES

During your time with us, you will have multiple opportunities to partake in real-world experiences. Our upper-level studios often work with outside entities to help create a vision for their future. As an example, in the recent past we have worked with multiple public schools in the Kansas City and Topeka areas to master plan a remodel of their buildings and create a modern learning environment for the 21st century and beyond. We also have a long-standing relationship with a furniture manufacturer, OFS, that works with a small group of students in their fifth year and our faculty to develop project briefs. Our relationship with OFS has brought two students' designs into the marketplace and three more are currently in development. As an added benefit, these students, who are now graduates, receive royalties for these designs. These types of experiences will set you apart as they will offer insight into how to communicate with actual users and manufactures and help bring your ideas to reality.

### DESIGN YOUR FUTURE

Make a positive impact on the world. Make your future Interior Architecture.

*\*Formerly known as Interior Architecture and Product Design (IAPD).*



### Career Opportunities

As the education in Interior Architecture is diverse, so are your career possibilities. The MIARC will prepare you to be a comprehensive thinker capable of designing at the many scales that comprise the interior environment. Employers value the inclusive understanding of the building and human context. Graduates have chosen to work as interior architects, furniture designers, historic preservationists, exhibit designers and space planners. Others have chosen graphic design, automotive design, set design, or lighting design. Still other alumni have opted to work in the amusement and theme park arena or aircraft, yacht and boat design, while some have become illustrators or model builders.

### OUR ALUMNI HAVE



DESIGNED FOR THE "STAR WARS" FRANCHISE



Michelle Rotherham '08

"I can remember as a freshman seeing the output of the students in higher studios and thinking how amazing and impossible it seemed. I quickly realized that hard work and being a part of this great program over the next five years would allow me to achieve amazing things. During my career, I have been able to play key roles on wonderful projects — including a ground-up replacement hospital, killer corporate offices, cafes and even a chapel... along with every piece of furniture inside. I have recently taken the role as director of interiors at my firm where I am able to help with strategic decisions and help further elevate the design practice. Outside of my day job, I have co-founded a nonprofit that rehabs apartments for people experiencing homelessness. I am thankful for my time at K-State as it has prepared me to become a designer and a leader."



SIX PRODUCTS HAVE BEEN SELECTED FOR MANUFACTURING WITH ROYALTIES



ALUMNI HAVE WORKED ON EXHIBIT AND ENTERTAINMENT RIDES FOR UNIVERSAL PARKS & RESORTS



DESIGNED INTERIOR SPACES FOR YANKEE STADIUM



Accredited by the Council for Interior Design Accreditation



Approved by the National Association of Schools of Art and Design



# INDD

## Industrial Design

The Master of Industrial Design, or MINDD, develops students into creative, purposeful and environmentally thoughtful global citizens. As an industrial designer, you will have the knowledge and skills to create products that have a lasting effect on people.

### INNOVATE THROUGH DESIGN

**Industrial Design:** Our program is exceptionally diverse with a combination of studies focused on products for the built environment. From spatial experiential design to handheld devices, consumer goods and furniture, you will learn to design at a range of scales. You will grow into a steward of the environment by looking at life cycles and upcycle alternatives to the products you design. Our students become passionate innovators and questioners of the status quo, which will assist them in creating superior products for our future.

**Furniture Design:** We want our graduates to be makers as much as they are designers. Our degree coursework emphasizes an understanding of theory and enables you to work through any design problem to execute your concept.

You will gain a hands-on experience in our workshop studios by producing furniture designs in our fully-equipped, state-of-the-art wood, metal, plastic and upholstery labs. Our labs house both traditional equipment and computer numerically controlled, or CNC, manufacturing equipment. Faculty create a safe and creative environment for you to experiment and push boundaries in the designing and making of exquisite custom furniture. You will also have the opportunity to work directly with the contract furniture industry in bringing their designs to the marketplace. Work with our faculty to gain valuable insight into materials, building processes and superior craftsmanship.

**Industry Partners:** Woven into our curriculum is the opportunity to work with industry partners. Engaging with the industry has opened doors for many of our students with some being offered internships and others receiving royalties for products designed in our courses.

**Start-up Studio:** We dedicate one studio as a "Start-up" Studio where you will work on developing projects and outcomes prepared for crowdsourcing product development. This type of innovation incubator will develop your entrepreneurship skills.

### DESIGN YOUR FUTURE

Create impactful products for a better tomorrow. Make your future Industrial Design.



### Career Opportunities

The MINDD gives students the experience to join design firms across the country. Graduates can pursue careers in a variety of design fields. Our current alumni already work in product design, entertainment design, package design and furniture design. You will also be empowered, through our entrepreneurship courses and exposure to the industry, to forge your own path in the design field. As this new degree program grows so will the opportunities.

### Seek your passion in...

- consumer product design
- toy design
- user centered design
- sustainable design
- furniture design
- entertainment design
- experiential design
- and more!

FOUR PRODUCTS  
HAVE BEEN PICKED  
FOR DEVELOPMENT

TWO FURNITURE  
DESIGNS ARE SOLD  
NATIONWIDE

ALUMNI HELPED  
DESIGN NIKE'S 3.0  
FREE

### Student Opportunities

During your time with us, you will have multiple opportunities to partake in real-world experiences. Our students work with industry partners during their education. These partnerships are to develop products for the marketplace. This experience will set you apart from your peers and provide the potential for you to see your designs produced and sold to the public. With all of the collaboration agreements, we make sure that your ideas are valued and that royalties are provided if picked up by our partners. Through these opportunities, we have two products in the marketplace. They have both won professional design awards. Additionally, there are also three more products in development.



## NASAD

New Program Approved by the  
National Association of Schools  
of Art and Design



# LA

## Landscape Architecture

### 21ST-CENTURY PROFESSION

Landscape architects design places that connect people to the natural world, creating landscapes for people's everyday lives and their most memorable moments. The Master of Landscape Architecture, or MLA, degree prepares students to address the present and future environmental and urbanization challenges of our world.

Landscape architecture encompasses analysis, planning, design, management and stewardship of urban, suburban and rural environments. The profession includes the design of green spaces such as plazas, gardens and parks. On a broader scale, landscape architects analyze sites to determine their most appropriate future uses and management practices, including the arrangement of buildings, transportation, and pedestrian and green infrastructure systems.

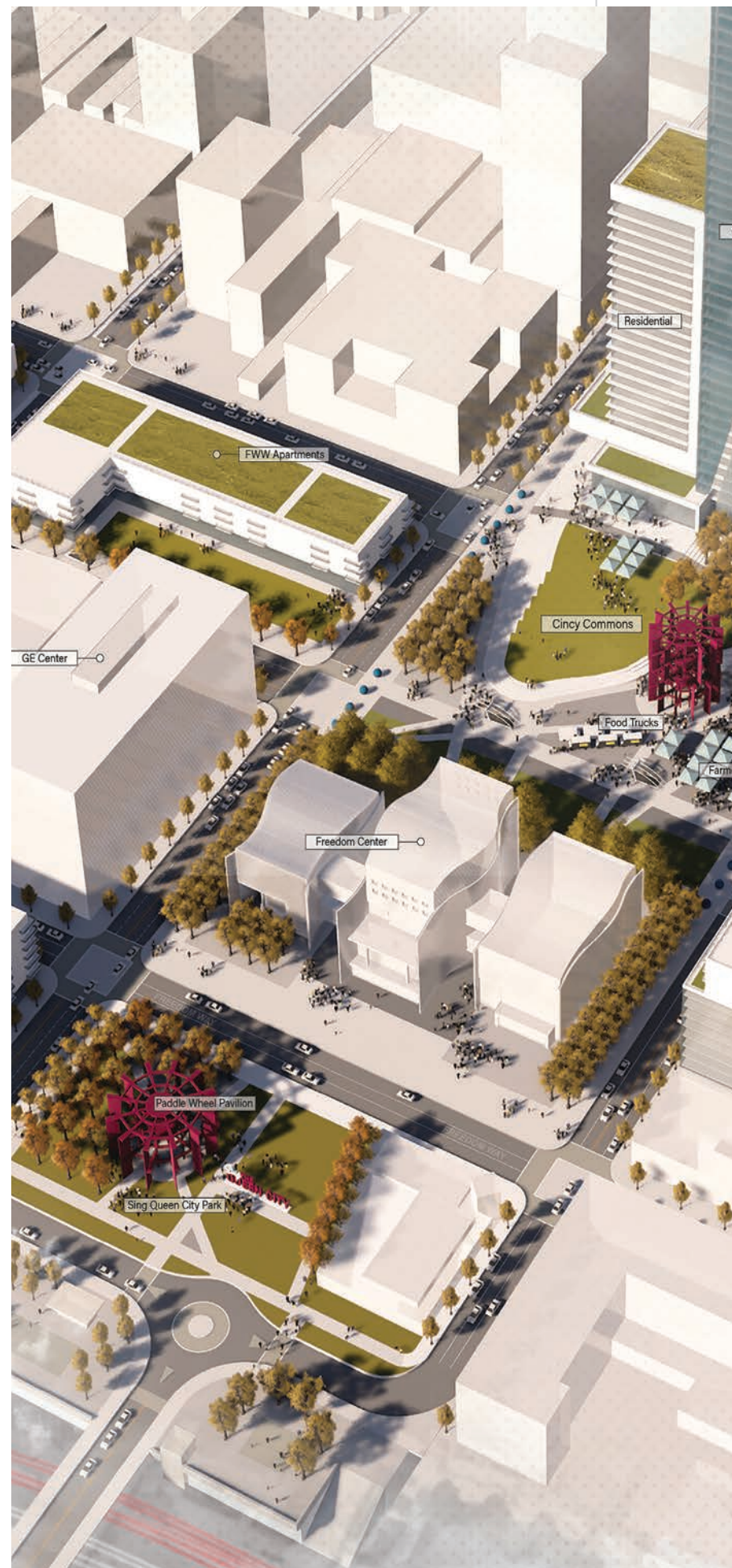
### COMPREHENSIVE AND CREATIVE EDUCATION

The MLA program provides students a broad range of activities in the studio, classrooms and field study to develop mastery of the profession. Woven into the course of study are ecology, sustainability, construction and scales of analysis and design from site to regional. Classes combine design, technical skills, history, theory, natural science and research through hands-on learning in the field, fabrication shops and studio. Knowledge and skills gained prepare graduates to conserve and restore landscapes that create and remake cities for brighter, greener futures.

Highly collaborative in nature, landscape architects often lead teams of architects, engineers, scientists and others to find the best solution for complex planning and design problems. In preparation for this role, students engage in interdisciplinary projects and complete their education with an independent master's report or thesis that becomes a part of the Graduate School's library. They work with a multidisciplinary committee that integrates specialized knowledge from other fields into landscape architecture proposals.

### ENGAGED SERVICE LEARNING

Landscape architects have specialized knowledge of natural systems that we apply to address ecosystem and human community needs. Faculty and students apply their knowledge and skills in real communities, allowing students to practice the leadership skills important to their future careers. Integration of faculty research and creative activities into studios allows students to partner with faculty on projects exploring current topics in landscape architecture and assisting communities and clients.



### Career Opportunities

Graduates of the MLA program are prepared to design, plan, manage and steward the land in natural and urban environments. Some focus on specialized areas of interest such as ecological restoration or urban design. Others enjoy working in offices that address a variety of types and scales of sites, from small parks to new town plans. Our graduates work in offices ranging from small groups with a few employees to large multidisciplinary practices. Alumni are employed across the world in private firms and public agencies. Because landscape architecture is a growing green profession, more than 98% of recent MLA graduates from K-State are employed in the field.

### OUR ALUMNI HAVE



HELPED MAKE  
NEW YORK CITY  
MORE PEDESTRIAN-  
AND BIKE-FRIENDLY



Ian Scherling '09

"As a landscape architect, I serve people and the environment. From cities aspiring to design new parks, plazas and streets, to institutions implementing green roofs that capture precious rainwater, landscape architects can have a significant impact on communities. Working alongside architects, planners, artists and engineers, my work spans scale, scope and geography. I am proud to have a degree in landscape architecture from Kansas State University because the quality of courses and range of professors prepared me incredibly well to have a successful career and to be a leader in the field of landscape architecture."



REDESIGNED AND  
REBUILT THE NEW  
ORLEAN'S 9TH WARD  
AFTER HURRICANE  
KATRINA WITH  
SUSTAINABLE HOMES  
AND LANDSCAPES



RESPONSIBLE FOR  
THE AWARD-WINNING,  
INNOVATIVE MASTER  
PLAN SHAPING THE OHIO  
STATE UNIVERSITY'S  
FUTURE



Accredited by the Landscape  
Architectural Accreditation Board



# RCP

## Regional & Community Planning

### PROFESSION FOR THE FUTURE

Regional and community planners remake cities into dynamic places to live, work and play. Their work makes a difference in the lives of people, ensuring that communities and regions are prepared to meet the challenges and opportunities they face. Planning is identified as one of the highest-opportunity professions in the next 20 years.

Master of Regional & Community Planning, or MRCP, students and faculty are evidence-driven, concentrating on the Department of Landscape Architecture and Regional & Community Planning three foci:

- Environmental Stewardship
- Critical Inquiry and Creative Thinking
- Community Design and Engagement

Students in the MRCP program learn how to build vibrant, resilient cities with physical plans and strategic policies. City planners link businesses, schools and neighborhoods with pedestrian, bicycle, vehicular and mass transit systems. They create local zoning and planning policies that support shared-based mobility and transit-oriented development.

### UNIQUE PLANNING EDUCATION

The MRCP program offers an unparalleled opportunity for students to work across the scales of design and planning, from site design review to regional planning. Courses build planning knowledge, values, ethics and skills. A sequence of carefully orchestrated classes and experiences specific to a student's degree path leads to completion of a report or thesis. A multidisciplinary committee of faculty guides students' work, allowing in-depth understanding of the factors influencing regional and community issues. Our interdisciplinary approach leads to inspired and thoughtful solutions for the future.

### ENGAGED SERVICE LEARNING

Faculty and students apply their knowledge and skills in real communities, allowing students to practice the leadership skills important to their future careers. Collaborations with the landscape architecture program merge complementary knowledge and skills to tackle environmental and societal dilemmas in communities. In addition, faculty research, scholarship and creative activities open doors for students to partner with faculty on cutting-edge projects. These opportunities to apply knowledge from class to real-world situations bring planning to life.

### Career Opportunities

Graduates of the MRCP program are prepared to lead in a broad range of planning environments. This profession is grounded in basic planning and analytical techniques, management, human relations and ethical considerations, as well as collaboration with other disciplines and leadership in decision-making; neighborhood, city and regional planning; transportation, health and housing planning; economic development and city management; special population planning; resource planning and preservation of ecosystems; and urban design and historic preservation. Knowledge and skills gained in the program allow graduates to take positions as geographic information system analysts; demographic, research and market analysts; or policy analysts. They also can find careers as private consultants, land developers, real estate appraisers, nonprofit developers, and city and regional staff planners and directors.

### OUR ALUMNI HAVE

LED A TEAM OF ENGINEERS, PILOTS AND PSYCHOLOGISTS TO PLAN THE AIRSPACE OVER THE UNITED STATES

**Stephanie Peterson '09**

"As a student, the MRCP program gave me opportunities to work on local projects, engage with community leaders, and gain invaluable insight on how the planning process can shape our built environment. Today, I still call Manhattan my home, and get to work at a regional level to guide future investments to create a multimodal transportation system to support active living and a sustainable future. My work ranges from large-scale projects like multicounty transportation solutions, a regional trail network, and fixed-route transit systems, to designing streetscapes, identifying bus stop amenities, and analyzing our local bike-share program. My education provided me the tools to shape how communities are built and influence how people live, work and play."

BEEN RESPONSIBLE FOR ECOLOGICAL PLANNING FOR THE STATE OF WASHINGTON

WORKED WITH THE MMOFRA FOUNDATION TO HELP PLAN LEARNING LANDSCAPES FOR CHILDREN IN GHANA



Accredited by the Planning Accreditation Board



# WHAT TO EXPECT

## COLLEGE CLASSES TO CONSIDER TAKING BEFORE YOU ARRIVE

- College Algebra *(or higher-level math)*
- Expository Writing I
- Expository Writing II
- Public Speaking
- Physics *(must be equivalent to Descriptive Physics or General Physics I)*
- General electives *(Refer to pages 26-30 to see the number of general electives required by each degree program.)*

Find more information about transfer equivalency, advanced placement and more at [apdesign.k-state.edu/prior-learning](http://apdesign.k-state.edu/prior-learning).



## CONTACT

Your personal contact in APDesign is the director of student recruitment. Reach out with questions, [myapd@k-state.edu](mailto:myapd@k-state.edu), 785-532-5047.

## TYPICAL FIRST SEMESTER WEEKLY SCHEDULE

	MONDAY	TUESDAY	WEDNESDAY	THURSDAY	FRIDAY
8:30 a.m.			College Algebra LEC: 8:30-9:20		
9:30 a.m.	College Algebra REC: 9:30-10:20	Public Speaking 9:30-10:20		Public Speaking 9:30-10:20	College Algebra LAB: 9:30-10:20
10:30 a.m.	General Elective 10:30-11:20		General Elective 10:30-11:20		General Elective 10:30-11:20
1:30 p.m.	History of Designed Environment 1:30-2:20	Studio Seminar 2:30-3:20	History of Designed Environment 1:30-2:20	Survey of Design Professions 2:30-3:20	History of Designed Environment 1:30-2:20
2:30 p.m.	Environmental Design Studio 2:30-5:20		Environmental Design Studio 2:30-5:20		Environmental Design Studio 2:30-5:20

*Environmental Design Studio is also offered 8:30-11:20 a.m. on Monday, Wednesday and Friday*

## FIRST-YEAR CLASSES



### ENVIRONMENTAL DESIGN STUDIO

The two-semester Environmental Design Studio introduces the visual and verbal vocabulary employed in the creation, definition and communication of space. Each ENVD studio class consists of approximately 18 students. Studio is a hands-on design course where you will draw, build models, take field trips and more. To experience diverse approaches, students take studio with a different professor each semester. The professors who teach in the first-year program are dedicated to the college's teaching mission and to providing a challenging and supportive academic experience.



### STUDIO SEMINAR

The studio is the core setting for the design and planning programs in APDesign. Information that is both common and critical to the work being done in studio, as well as some of the best practices to employ with regard to managing oneself in this environment, are covered in this course.



### HISTORY OF DESIGNED ENVIRONMENT

Because the environments we create are an expression of culture, students enroll in the two-semester course, History of the Designed Environment. This course introduces students to the connections between our past and present society and to the design professions as civic art.



### SURVEY OF DESIGN PROFESSIONS

Survey of Design Professions explores each of the disciplines within the allied design and planning professions and gives students an opportunity to become better acquainted with professional opportunities in those fields.

## SUPPORT



### APDESIGN CAT COMMUNITY

Live with fellow APDesign students as you get to know your ENVD classmates, join study groups and meet regularly with a current APDesign student serving as the residential learning assistant. Attend weekly meals or meetings with faculty members, administrators and upper-level students. Living with your classmates will help you stay focused and motivated.



### ACADEMIC ADVISING

Academic advising is highly valued in APDesign, and our professional academic advisors are a critical piece of your academic support system. They provide direction and counsel as you navigate demanding professional curricula and celebrate your many successes along the way.



# ARCH

170

TOTAL HOURS REQUIRED  
FOR GRADUATION  
(INCLUDING ENVD PROGRAM)

# CURRICULUM GUIDE

Setting a path for your future education

## MASTER OF ARCHITECTURE 2021

ACCREDITED BY THE NATIONAL ARCHITECTURAL ACCREDITATION BOARD

### ENVIRONMENTAL DESIGN STUDIES PROGRAM

#### FIRST SEMESTER

ENVD	201	Environmental Design Studio I	4
ENVD	203	Survey of Design Professions	1
ENVD	204	Studio Seminar	1
ENVD	250	History of Designed Environment I	3
MATH	100	College Algebra	3
COMM	105	Public Speaking 1A	2
		*General Studies Elective	3
			<b>17</b>

#### SECOND SEMESTER

ENVD	202	Environmental Design Studio II	4
ENVD	251	History of Designed Environment II	3
ENGL	100	Expository Writing I	3
PHYS	115	Descriptive Physics	5
			<b>15</b>

### ARCHITECTURE PROGRAM

#### THIRD SEMESTER

ARCH	302	Architectural Design Studio I	5
ARCH	248	Fundamentals of Arch. Technology	3
ARCH	350	History of Designed Environment III	3
ENGL	200	Expository Writing II	3
ENGL	274	Digital Architecture I	1
		*General Studies Elective	3
			<b>18</b>

#### SUPPLEMENTAL STUDY

*General Studies Elective	<b>6</b>
---------------------------	----------

#### FIFTH SEMESTER

ARCH	403	Architectural Design Studio III	5
ARCH	413	Environmental Systems in Arch. I	4
ARCH	448	Structural Systems in Arch. II	4
ARCH	374	Digital Architecture III	1
		*General Studies Elective	3
			<b>17</b>

#### FOURTH SEMESTER

ARCH	304	Architectural Design Studio II	5
ARCH	325	Environmental Design and Society	3
ARCH	347	Structural Systems in Arch. I	4
ARCH	433	Bldg. Const. Systems in Arch. I	3
ARCH	373	Digital Architecture II	1
			<b>16</b>

#### SIXTH SEMESTER

ARCH	404	Architectural Design Studio IV	5
ARCH	434	Bldg. Const. Systems in Arch. II	3
ARCH	514	Environmental Systems in Arch. II	3
LAR	500	Site Planning and Design	3
		*General Studies Elective	3
			<b>17</b>

#### SEVENTH SEMESTER

ARCH	605	Architectural Design Studio V	5
		**Planning Elective	3
		*General Studies Elective	5
		<b>** Professional Support Elective</b>	<b>3</b>
			<b>16</b>

#### EIGHTH SEMESTER\*\*\*

ARCH	606	ADS VI	5
		** Professional Support Electives	9
			<b>14</b>

#### NINTH SEMESTER

ARCH	806	Architectural Design Studio VII	5
ARCH	817	Comprehensive Design Prep	3
ARCH	853	Pro Prac: Prof. Responsibility	1
ARCH	854	Pro Prac: Office Practice	1
ARCH	855	Pro Prac: Disc-Specific Topics	1
ARCH	750	<b>** Writing Intensive Arch Seminar</b>	<b>3</b>
		* General Studies Elective	3
			<b>17</b>

#### TENTH SEMESTER

ARCH	818	Architectural Design Studio VIII	5
		<b>** Architectural Seminar</b>	<b>3</b>
		<b>** Professional Support Elective</b>	<b>3</b>
		*General Studies Elective	3
			<b>17</b>

\* A minimum of 29 general studies elective credits must be in non-architectural studies courses. Courses that are part of the K-State 8 General Education program, in addition to any course in communications, history, humanities, social sciences, natural sciences, foreign languages or mathematics will fulfill this requirement. They may be taken in pursuit of a minor. They may be taken any time prior to or during the Architecture program and may include K-State-approved AP, IB, CLEP and transfer credit. General studies electives may include K-State-approved extracurricular work as allowed by university regulations. In addition, there is a 1 credit unrestricted elective.

\*\* The M.Arch. degree requires 27 hours of professional support electives, 12 for undergraduate credit and 15 for graduate credit. Of the undergraduate credits, at least 3 hours must be planning elective credits; the other 9 are usually fulfilled in the eighth semester as part of the fourth-year study options. At least 6 hours of the graduate-level PSE must be architecture seminars. See the Master of Architecture Handbook for further details. Students may not count more than 3 total hours of department-approved extracurricular PSE credits, such as Oz, NOMAS or Plot Club, toward graduation. PSE credits correspond to optional studies as listed in the 2014 NAAB Conditions for Accreditation.

\*\*\*See pages 3 and 4 of curriculum form.

Undergraduate elective courses must fulfill the Human Diversity and Global Issues & Perspectives in the United States area of K-State 8 general education program. The other seven areas are fulfilled by required courses. Information about K-State 8 is available at [k-state.edu/kstate8](http://k-state.edu/kstate8) and in the university catalog. K-State 8 course lists are available at [k-state.edu/kstate8/lists/](http://k-state.edu/kstate8/lists/).

Courses listed in **bold** type represent those hours required within the graduate program. Total graduate credit hours is 31.

# IARC

170

TOTAL HOURS REQUIRED  
FOR GRADUATION  
(INCLUDING ENVD PROGRAM)

# CURRICULUM GUIDE

Setting a path for your future education

## MASTER OF INTERIOR ARCHITECTURE 2021

ACCREDITED BY THE COUNCIL FOR INTERIOR DESIGN ACCREDITATION AND  
APPROVED BY THE NATIONAL ASSOCIATION OF SCHOOLS OF ART & DESIGN

### ENVIRONMENTAL DESIGN STUDIES PROGRAM

#### FIRST SEMESTER

ENVD	201	Environmental Design Studio I	4
ENVD	203	Survey of Design Professions	1
ENVD	204	Studio Seminar	1
ENVD	250	History of Designed Environment I	3
MATH	100	College Algebra	3
COMM	105	Public Speaking 1A	2
		*General Elective	3
			<b>17</b>

#### SECOND SEMESTER

ENVD	202	Environmental Design Studio II	4
ENVD	251	History of Designed Environment II	3
PHYS	115	Descriptive Physics	5
ENGL	100	Expository Writing I	3
			<b>15</b>

### INTERIOR ARCHITECTURE PROGRAM

#### THIRD SEMESTER

IARC	307	IARC Design Studio I	5
IARC	248	Fundamentals of Arch. Technology	3
IARC	430	Visual Communication I	2
IARC	456	Intro. to Product/Industrial Design	2
ARCH	350	History of Designed Environment III	3
ENGL	200	Expository Writing II	3
			<b>18</b>

#### FOURTH SEMESTER

IARC	320	IARC Design Studio II	5
IARC	431	Visual Communication II	2
ARCH	347	Structural Systems in Arch. I	4
ARCH	433	Bldg. Const. Systems in Arch. I	3
		*General Elective	3
			<b>17</b>

#### FIFTH SEMESTER

IARC	435	IARC Design Studio III	5
IARC	310	Digital Applications	2
IARC	409	Materials and Finishes	3
ARCH	413	Environmental Systems in Arch. I	4
ARCH	448	Structural Systems in Arch. II	4
			<b>18</b>

#### SIXTH SEMESTER

IARC	440	IARC Design Studio IV	5
IARC	407	Design Workshop I	3
IARC	412	Design Workshop I Studio	1
IARC	625	Lighting	3
IARC	628	Bldg. Const. Systems IA	3
ARCH	514	Environmental Systems in Arch. II	3
			<b>18</b>

#### SUMMER OPTIONS (PICK ONE COLUMN — TO BE COMPLETED AFTER THE SIXTH OR EIGHTH SEMESTER)

IARC	664	IARC Summer Internship	6	Study Abroad	<b>7</b>	**Focus Courses	<b>7</b>
IARC	665	IARC Summer Internship Report	1				
			<b>7</b>				

#### SEVENTH SEMESTER

IARC	801	IARC Design Studio V	5
IARC	602	Design Workshop II	3
IARC	603	Design Workshop II Studio	1
IARC	811	Design Research	2
IARC	416	History of Furniture	3
IARC	753	Pro Prac: Prof. Responsibility	1
IARC	754	Pro Prac: Office Practices	1
IARC	755	Pro Prac: Disc. Specific Topics	1
			<b>17</b>

#### EIGHTH SEMESTER

<b>option 1:</b> on campus, KCDC or study abroad			
IARC	606	IARC Design Studio VI	5
		*** Electives	9
			<b>14</b>
<b>or option 2</b>			
IARC	644	IARC Internship	9
IARC	645	IARC Internship Report	5
			<b>14</b>

#### NINTH SEMESTER

IARC	810	IARC Capstone Studio	5
IARC	813	Furniture Design Workshop Studio	1
IARC	814	Furniture Design Workshop	3
IARC	815	Advanced Studio Programming	2
		*General Elective	3
			<b>14</b>

#### TENTH SEMESTER

IARC	823	Advanced IA Design Studio	6
<b>OR</b>			
IARC	824	Advanced Furniture Design Studio and Workshop	6
IARC	891	Contemporary Design Seminar	3
		*General Elective	6
			<b>15</b>

\*A minimum of 15 general elective credits must be taken. General electives may be taken in pursuit of a minor. They may be taken any time prior to or during the Interior Architecture & Product Design program and may include K-State-approved AP, IB, CLEP and transfer credit. Students may not count more than 3 total hours of recreation credits toward graduation.

\*\*Focus Course includes IARC 605, as well as other department head approved courses, including those associated with a minor program.

\*\*\*Electives taken in the eighth semester should support student interest, including professional electives and study abroad courses. These may also be associated with a minor program.

Courses listed in **bold** type represent those hours required in the graduate program. Total credit hours required for Graduate School program of study is 31.



# INDD

170

TOTAL HOURS REQUIRED  
FOR GRADUATION  
(INCLUDING ENVD PROGRAM)

# CURRICULUM GUIDE

Setting a path for your future education

## MASTER OF INDUSTRIAL DESIGN 2020

### ENVIRONMENTAL DESIGN STUDIES PROGRAM

#### FIRST SEMESTER

ENVD	201	Environmental Design Studio I	4
ENVD	250	History of Designed Environment I	3
ENVD	203	Survey of Design Professions	1
ENVD	204	Studio Seminar	1
MATH	100	College Algebra	3
COMM	105	Public Speaking 1A	2
		*General Elective	3
			17

#### SECOND SEMESTER

ENVD	202	Environmental Design Studio II	4
ENVD	251	History of Designed Environment II	3
PHYS	115	Descriptive Physics	5
ENGL	100	Expository Writing I	3
			15

### INDUSTRIAL DESIGN PROGRAM

#### THIRD SEMESTER

IARC	307	IAPD & INDD Design Studio I	5
IARC	248	Fundamentals of Arch. Technology	3
IARC	430	Visual Communication I	2
INDD	456	Intro. to Product/Industrial Design	2
ARCH	350	History of Designed Environment III	3
ENGL	200	Expository Writing II	3
			18

#### FOURTH SEMESTER

INDD	320	INDD Design Studio II	5
IARC	407	Design Workshop I	3
IARC	412	Design Workshop Studio I	1
IARC	431	Visual Communication II	2
IMSE	250	Intro Mfg. Processes & Systems	2
INDD	350	Product Semantics	3
			16

#### FIFTH SEMESTER

INDD	435	IAPD Design Studio III	5
IARC	602	Design Workshop II	3
IARC	603	Design Workshop Studio II	1
INDD	310	INDD Digital Applications	2
INDD	325	Human Factors	3
IAPD	416	History of Furniture	3
			17

#### SIXTH SEMESTER

INDD	440	IAPD Design Studio IV	5
INDD	500	Materials & Mfg. Processes	3
LAR	311	Unlocking Creativity	3
IARC	625	Lighting	3
ART	303	Graphic Design for Non-majors	3
			17

#### SUMMER OPTIONS (PICK ONE COLUMN — TO BE COMPLETED AFTER THE SIXTH OR EIGHTH SEMESTER)

IAPD	664	Summer Internship	6	Study Abroad	7	**Focus Courses	7
IAPD	665	Summer Internship Report	1				
			7				

#### SEVENTH SEMESTER

<b>option 1:</b> on campus, KCDC or study abroad			
INDD	606	INDD Design Studio V	5
		*** Electives	9
			14

#### or option 2

IARC	644	Internship	9
IARC	645	Internship Report	5
			14

#### NINTH SEMESTER

INDD	810	INDD Capstone Studio	5
INDD	815	Advanced Studio Programming	2
ENTRP	350	Technology & Innovation Mangt.	3
		*General Elective	6
			16

#### EIGHTH SEMESTER

INDD	811	Design Research	3
INDD	801	INDD Design Studio VI	5
IARC	813	Design Workshop III	3
IARC	814	Design Workshop Studio III	1
INDD	800	Professional Practice	3
ENTRP	340	Intro to Entrepreneurship	3
			18

#### TENTH SEMESTER

INDD	822	Advanced Product Design Studio	6
		OR	
IARC	824	Advanced Furniture Design Studio	6
IARC	891	Contemporary Design Seminar	3
		*General Elective	6
			15

\*A minimum of 15 general elective credits must be taken. General electives may be taken in pursuit of a minor. They may be taken any time prior to or during the Interior Architecture & Product Design program and may include K-State-approved AP, IB, CLEP and transfer credit. Students may not count more than 3 total hours of recreation credits toward graduation.

\*\*Focus Course includes IAPD 605, as well as other department head approved courses, including those associated with a minor program.

\*\*\*Electives taken in the eighth semester should support student interest, including professional electives and study abroad courses. These may also be associated with a minor program.

Courses listed in **bold** type represent those hours required in the graduate program. Total credit hours required for Graduate School program of study is 31.

# LA

153

TOTAL HOURS REQUIRED  
FOR GRADUATION  
(INCLUDING ENVD PROGRAM)

# CURRICULUM GUIDE

Setting a path for your future education

## MASTER OF LANDSCAPE ARCHITECTURE 2021 (Master's Report Option)

ACCREDITED BY THE LANDSCAPE ARCHITECTURAL ACCREDITATION BOARD

### ENVIRONMENTAL DESIGN STUDIES PROGRAM

#### FIRST SEMESTER

ENVD	201	Environmental Design Studio I	4
ENVD	250	History of Designed Environment I	3
ENVD	203	Survey of Design Professions	1
ENVD	204	Studio Seminar	1
MATH	100	College Algebra	3
COMM	105	Public Speaking 1A	2
		*General Elective	3
			17

#### SECOND SEMESTER

ENVD	202	Environmental Design Studio II	4
ENVD	251	History of Designed Environment II	3
PHYS	115	Descriptive Physics	5
ENGL	100	Expository Writing I	3
			15

### LANDSCAPE ARCHITECTURE PROGRAM

#### THIRD SEMESTER

LAR	220	Drawing Landscapes Studio	5
LAR	230	Modeling Landscapes Studio	5
LAR	101	Introduction to Landscape Architecture	3
LAR	350	Introduction to Plants	1
LAR	010	Travel: Regional 1	0
			14

#### FOURTH SEMESTER

LAR	433	Landscape History and Design Studio	5
LAR	420	Socio-Ecological Systems Studio	5
LAR	322	Ethics and Environmental Dilemmas	3
LAR	351	Plant Patterns and Use	1
LAR	020	Travel: Regional 2	0
ENGL	200	Expository Writing II	3
			17

#### SUMMER SEMESTER

LAR	430	Narratives & Placemaking Studio	4
LAR	425	Narratives & Placemaking Seminar	2
LAR	352	Landscape Performance Lab	3
LAR	030	Travel: Narratives & Placemaking	0
			9

#### FIFTH SEMESTER

LAR	442	Site Research and Design Studio	5
LAR	438	Site Design Implementation	5
LAR	353	Plant Selection	1
LAR	040	Travel: Major City 1	0
LAR	444	Career and Academic Planning	2
PLAN	315	Introduction to City Planning	3
			16

#### SIXTH SEMESTER

LAR	646	Community Engagement Studio	5
LAR	439	Master Plan Design & Implementation	5
LAR	354	Landscape Restoration	1
LAR	050	Travel: Major City 2	0
LAR	445	Career Development Communications	1
		*General Elective	3
			15

#### SEVENTH SEMESTER

LAR	740	Advanced Studio	5
LAR	725	Research Methods	3
LAR	750	Advanced Seminar	2
LAR	754	Pro Prac: Office Practices	1
		***Professional Elective	3
			14

#### EIGHTH SEMESTER\*\*

<b>KCDC or Study Abroad Option:</b>			
LAR	703	Off-Campus Studio	5
		Professional Electives	9
			14

#### Internship Option:

LAR	703	Off-Campus Studio	5
LAR	655	LA Professional Internship	7-9
			12-14

#### NINTH SEMESTER

LAR	705	Master's Project Studio 1	5
LAR	897	Proposal Writing	2
LAR	753	Pro Prac: Prof. Responsibility	1
		***Professional Elective	3
			11

#### TENTH SEMESTER

LAR	710	Master's Project Studio 2	3
LAR	898	Master's Report	2
		***Professional Elective	6
			11

The K-State 8 general education areas are covered by courses required in the Landscape Architecture curriculum. Information about K-State 8 is available on the web and in the university catalog.

All required courses taught in the Landscape Architecture and Regional & Community Planning programs that are counted toward the degree must be passed with a grade of C or better.

\*A minimum of 6 general elective credits must be taken. General elective may be taken in pursuit of a minor. They may be taken any time prior to or during the Landscape Architecture program and may include K-State-approved AP, IB, CLEP and transfer credit. Students may not count more than 3 total hours of recreation credits toward graduation.

Graduate School admission is contingent upon completion of all required courses in the third and sixth semesters.

\*\*Off-campus semester: Two distinct study opportunities are offered, each requiring 14 credit hours. The study abroad and the internship options have course requirements that substitute for the 9 professional elective credit requirements. If the internship option is not selected during the seventh or eighth semester, a summer internship is required before graduation.

\*\*\*Six credit hours of the required graduate-level professional electives must be LAR courses. Students may petition for an exception to this policy if there is a demonstrated academic benefit.



RCP

138

TOTAL HOURS REQUIRED  
FOR GRADUATION  
(INCLUDING ENVD PROGRAM)

# CURRICULUM GUIDE

Setting a path for your future education

MASTER OF REGIONAL & COMMUNITY PLANNING 2021 (Master's Report Option)

ACCREDITED BY THE PLANNING ACCREDITATION BOARD

## ENVIRONMENTAL DESIGN STUDIES PROGRAM

### FIRST SEMESTER

ENVD	203	Survey of Design Professions	1
MATH	100	College Algebra	3
COMM	105	Public Speaking 1A	2
		Humanities/Design Elective	3
		Social Science/History Elective	3
		Social Science/Sociology Elective	3
			15

### SECOND SEMESTER

ENGL	100	Expository Writing I	3
		Humanities/Design Electives	6
		Natural Science Elective with lab	4
		*General Elective	3
			16

## REGIONAL & COMMUNITY PLANNING PROGRAM

### THIRD SEMESTER

PLAN	315	Introduction to City Planning	3
PLAN	320	Community Development Field Workshop	3
GEOG	302	Cartography	3
		Social Science/Economics Elective	3
		*General Elective	3
			15

### FOURTH SEMESTER

PLAN	215	World Cities	3
LAR	322	Ethics and Environmental Dilemmas	3
ENGL	200	Expository Writing II	3
GEOG	508	Geographic Information Systems I	4
		*General Elective	3
			16

### FIFTH SEMESTER

PLAN	640	Urban Design & Development	3
PLAN	510	Composition & Representation for Planners	2
PLAN	444	Career and Academic Planning	2
PLAN	010	Field Trip 1	0
		*General Electiv	3
		*General Electiv.	3
			13

### SIXTH SEMESTER

PLAN	703	Off-Campus Studies (internship, study abroad or KCDC Professional Electives	5
			9
			14

### SEVENTH SEMESTER

PLAN	720	Infr. Plan Implementation	3
PLAN	801	Knowledge Methods I	3
PLAN	707	Writing and Thinking the City	3
		Professional Elective	3
			12

### EIGHTH SEMESTER\*\*\*

PLAN	897	Proposal Writing	3
PLAN	836	Plan Making	5
PLAN	812	Planning Theory and Law	3
LAR	500	Site Planning and Design	3
PLAN	020	Field Trip 2	0
			14

### NINTH SEMESTER

PLAN	730	Planning Administration	3
		Professional Elective	3
		Professional Elective	3
		Professional Elective	3
			12

### TENTH SEMESTER

PLAN	705	Master's Project	3
PLAN	898	Master's Report	2
		Professional Elective	3
		Professional Elective	3
			11

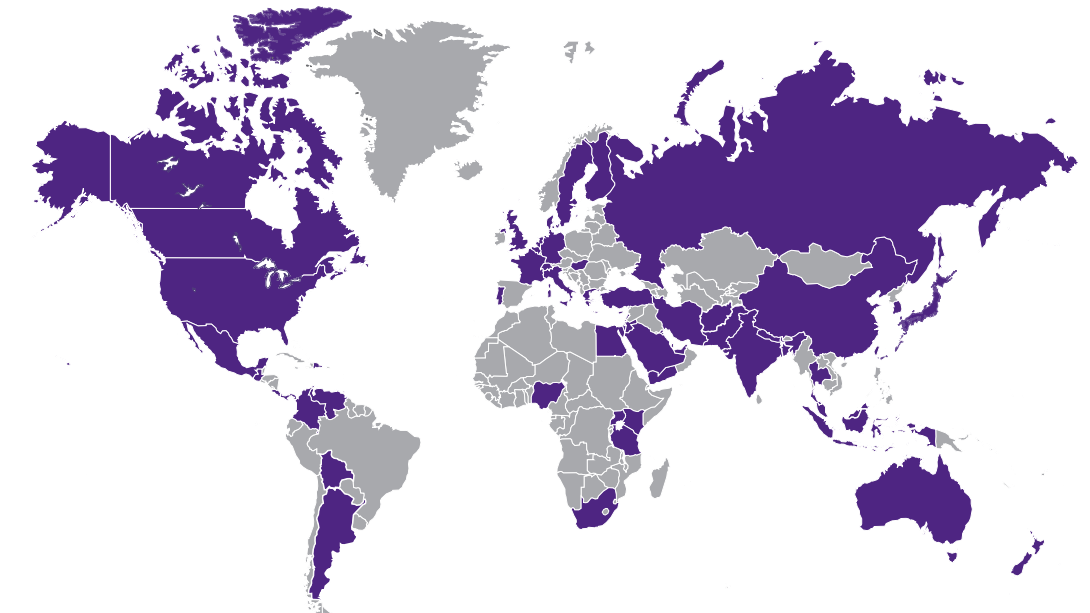
\*A minimum of 15 general elective credits must be taken. General electives may be taken in pursuit of a minor. They may be taken any time before or during the Regional & Community Planning program and may include K-State-approved AP, IB, CLEP and transfer credit. Students may not count more than 3 total hours of recreation credits toward graduation.

Professional Electives must include 6 graduate credit hours of PLAN courses.

All required courses taught in the Landscape Architecture and Regional & Community Planning programs that are counted toward the degree must be passed with a grade of C or better.

Courses listed in **bold** type represent those hours required within the graduate program. Total graduate credit hours is **46**.

# THE APDESIGN COMMUNITY



6,500+

APDESIGN ALUMNI

50

STATES WHERE ALUMNI  
ARE LIVING THEIR DREAMS  
(PLUS WASHINGTON, D.C., AND  
PUERTO RICO)

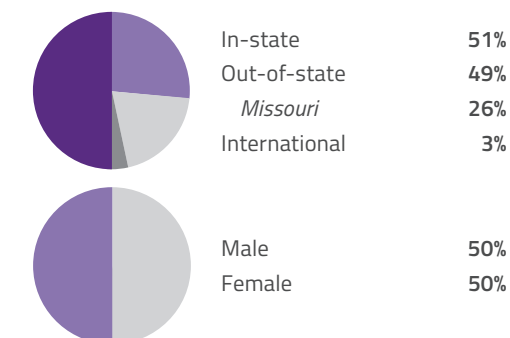
55

COUNTRIES WHERE  
ALUMNI WORK

# FAST FACTS

Providing exceptional students  
exemplary education

## Student Demographics



## APDesign Students

Environmental Design (first year)	180
Architecture	332
Industrial Design	42
Interior Architecture	130
Landscape Architecture	67
Regional & Community Planning	24
Postbaccalaureate master's	23
Post-professional master's	32
Interdisciplinary doctorate	8
APDesign faculty	59

## Degrees Granted Per Year

(approx.)	
Nonbaccalaureate master's	120
Postbaccalaureate master's	10





# COMMITTED TO YOUR PROFESSIONAL GOALS

## APDPro

APDPro is a professional development program offered to you as an APDesign student. The mission of APDPro is to enhance your experience and provide you with a competitive advantage as you transition to the workplace. The programs offered to you through APDPro will give you the career skills employers are looking for via workshops, lectures, seminars, professional mentoring and networking opportunities.

- More than 75% of APDesign students participate in APDPro each year.
- For more information on APDPro, please visit [apdesign.k-state.edu/apd-pro](https://apdesign.k-state.edu/apd-pro).

95%

OF APDESIGN GRADUATES HAVE MEANINGFUL EMPLOYMENT WITHIN SIX MONTHS OF GRADUATION



### APDPRO MENTOR PROGRAM

APDPro students have the opportunity to be matched with a professional mentor beginning in their third year as a part of the APDPro Mentor Program. Our APDPro Mentors are alumni and friends of the university with proven expertise in the design, planning and related professions. For more information on the APDPro Mentor Program, please visit [apdesign.k-state.edu/current-students/apdpro/mentorprogram](https://apdesign.k-state.edu/current-students/apdpro/mentorprogram).



### CAREER SKILLS

To help students prepare for their future careers, APDesign partners with K-State's Career Center to offer several career preparation activities. Each year, students have access to portfolio reviews and resume workshops. Mock Interviews, which take place each fall, give upper-level students a chance to interview with representatives from design and planning firms and receive constructive feedback.



### DESIGNEXPO

DesignExpo is APDesign's career fair. Firms from across the U.S. send representatives to meet with and provide information for our talented students on job and internship opportunities. DesignExpo is a time for students to showcase their skills and portfolios and get feedback from professionals.



### LECTURES AND EXHIBITIONS

Lecturers from around the world come to APDesign each year to enhance students' educational experiences by providing opportunities to see and hear about the work of skilled professionals. The Chang and Cassias galleries in the Seaton/Regnier Complex display a variety of exhibitions for students' exploration and enhancing knowledge.

## A WORLD OF POSSIBILITIES

APDesign alumni practicing architecture, interior architecture, industrial design, landscape architecture, and planning enjoy a variety of specializations throughout their careers, such as:

Game design/animation ▪ Set designer ▪ Graphic design ▪ Fabrication/manufacturing ▪ Theme park design ▪ Furniture design/build ▪ Software development ▪ Clothing/shoe design ▪ Housewares design ▪ Facilities management ▪ Real estate development ▪ Transportation planning ▪ Stormwater management ▪ Educator/academic leadership ▪ Natural resource specialist ▪ Lighting design ▪ Ecological restoration ▪ Park planning/design ▪ Luxury ship and yacht design ▪ Exhibit/retail display design ▪ Visual effect artist ▪ Event venue design ▪ Imagineer



# ESTIMATED ENVD STUDENT BUDGET

Prepare Financially for the Future

TUITION AND FEES		FIRST SEMESTER (17 hours)	YEAR (32 hours)
1	*In-state tuition <i>(\$316.30 per credit hour)</i>	\$5,377.10	\$10,121.60
OR			
1	**Midwest Student Exchange **Founders Non-Resident Merit Award <i>(150% of in-state tuition @ \$474.45 per credit hour)</i>	\$8,065.65	\$15,182.40
OR			
1	Out-of-state tuition <i>(\$852.00 per credit hour)</i>	\$14,484	\$27,264
2	<b>Student Services Fee</b> <i>(Health services, student newspaper, recreation complex and other items)</i>	\$465.48	\$930.96
3	<b>APDesign Fee</b> <i>(\$55 per credit hour, 9 credits in the fall, 7 credits in the spring)</i>	\$495	\$880
<b>Residence Halls</b> <i>(Traditional double room rate)</i>			
4	All Access meal plan	\$5,050	\$10,100
OR			
4	Limited 14 meal plan	\$4,740	\$9,480
<b>Books, supplies and field trips</b> <i>You are responsible for purchasing all materials, supplies, equipment and tools used in studio, and should plan to spend approximately \$1,000 for supplies during the first year. A drawing and model-building kit can be purchased at the beginning of the year for approximately \$350. You will take one or two field trips during the first year and should allocate approximately \$50-\$75 for each trip. Expect expenses to increase throughout the five-year program of study. During the fourth and/or fifth year of the program you will be taking at least 30 credits of graduate courses. Tuition for graduate coursework is approximately \$100 more per credit hour than undergraduate coursework.</i>		\$950	\$1,800
<b>Personal costs</b> <i>(travel, parking, athletic tickets, activities, etc.)</i> <i>*Missouri residents may qualify for in-state tuition. To learn more visit <a href="http://apdesign.k-state.edu/missouri-tuition">apdesign.k-state.edu/missouri-tuition</a>.</i> <i>**To learn more about the Founders Non-Resident Merit Award and the Midwest Student Exchange Program visit <a href="http://k-state.edu/scholarships">k-state.edu/scholarships</a>.</i>		\$800-\$2,000	\$1,600-\$4,000

## PURCHASING A COMPUTER

Students must purchase a computer in the second year. We do not recommend purchasing this computer as a first-year student. The Office of Student Financial Assistance can help determine if additional aid is available when you need to purchase your computer.

## SCHOLARSHIPS / AWARDS - PRIORITY DATE DEC. 1

You are encouraged to complete the university's scholarship application each year to be considered for university, college and departmental scholarships. APDesign awards college and department-level scholarships based on eligibility requirements established by the scholarship donor(s). These scholarships are made available through the generosity of alumni and friends of APDesign. More information about university scholarships and the application for scholarships can be found at [k-state.edu/admission/scholarships/](http://k-state.edu/admission/scholarships/).

# APPLY TO BECOME AN APDESIGN STUDENT

Nonbaccalaureate Master's Degree Program

## APPLICATION DEADLINES DEC. 1 | FEB. 1

For general university scholarship/award consideration

For consideration into the College of Architecture, Planning & Design

## APPLY TO KANSAS STATE UNIVERSITY

Visit the undergraduate admissions page at

***[k-state.edu/apply](http://k-state.edu/apply)***.

- **Mark one of the majors in APDesign as your intended major on the K-State application.**  
*(Architecture, Interior Architecture, Industrial Design, Landscape Architecture or Regional & Community Planning)*
- **Pay the university's application fee**
- **Provide academic information**  
The self-reported GPA and ACT or SAT scores provided on the application to K-State will be used for preliminary review. High school students should send official transcript to [k-state@k-state.edu](mailto:k-state@k-state.edu) or unofficial transcript to [myapd@ksu.edu](mailto:myapd@ksu.edu) for complete review of their application **Transfer students must send all official college transcripts including the most recent coursework and grades to the K-State Office of Admissions.**

*Please note: Kansas State University's priority date for admission and general university scholarships/awards is Dec. 1.*

## BASIS FOR ADMISSION DECISIONS

Admission decisions for high school students will be based on cumulative high school GPA. Admission decisions for transfer students will be based on cumulative college GPA.

### Early Acceptance to APDesign

If you apply before the Feb. 1 deadline and have a 3.5 GPA or above you will be offered early admission to APDesign. If you do not meet the requirements for early admission your application will be reviewed and you will be notified of the admission decisions in early March. If you are curious about how competitive you are for admission please reach out to us at [myapd@k-state.edu](mailto:myapd@k-state.edu).



## FOR MORE INFORMATION

### APDesign Director of Student Recruitment

1127 Regnier Hall  
920 N. 17th St.  
Manhattan, KS 66506-2902  
P: 785-532-1994  
F: 785-532-6722  
myapd@k-state.edu  
[apdesign.k-state.edu](http://apdesign.k-state.edu)

### Undergraduate Admissions

Kansas State University  
119 Anderson Hall  
919 Mid-Campus Drive North  
Manhattan, KS 66506  
P: 785-532-6250  
F: 785-532-6393  
k-state@k-state.edu  
[k-state.edu/admissions](http://k-state.edu/admissions)

### Office of Student Financial Assistance

Kansas State University  
220 Anderson Hall  
919 Mid-Campus Dr. North  
Manhattan, KS 66506  
Toll free : 877.817.2287  
P: 785-532-6420  
F: 785-532-7628  
finaid@k-state.edu  
[k-state.edu/admissions/finaid](http://k-state.edu/admissions/finaid)

### Cashiers and Student Accounts

Kansas State University  
211 Anderson Hall  
919 Mid-Campus Drive North  
Manhattan, KS 66506  
P: 785-532-6317  
F: 785-532-6454  
cashiers@k-state.edu  
[k-state.edu/pay](http://k-state.edu/pay)

### Housing and Dining Services

Kansas State University  
104 Pittman Building  
1531 Mid-Campus Drive North  
Manhattan, KS 66506  
Toll free : 888-568-5027  
P: 785-532-6453  
housing@k-state.edu  
[housing.k-state.edu](http://housing.k-state.edu)

LEARN MORE:  
[apdesign.k-state.edu](http://apdesign.k-state.edu)

APPLY FOR ADMISSIONS & SCHOLARSHIPS:  
[k-state.edu/admissions/apply](http://k-state.edu/admissions/apply)

FACEBOOK:  
[APDesignKState](https://www.facebook.com/APDesignKState)

TWITTER:  
[APDesignKState](https://twitter.com/APDesignKState)

INSTAGRAM:  
[APDesignKState](https://www.instagram.com/APDesignKState)

**APDESIGN**

THE COLLEGE of  
ARCHITECTURE, PLANNING & DESIGN // K-STATE

[apdesign.k-state.edu](http://apdesign.k-state.edu)

