

Off-Campus Options Meeting for Second Year INDD Students

April 2024

Updated on Sep. 1, 2024

Advising Process

Industrial Design Required Off-Campus Options

2025 - 2026

Our students' design and planning studies are enriched by frequent interaction with the world outside Seaton/Regnier Hall. This curriculum affords our students to have both an education abroad experience and complete an internship. As an alternative, our students may study at the Kansas City Design Center, where students will be instructed in various independent design projects related to KC companies. All Industrial Design students after finishing their third-year, are required to choose two of the following (one must be semester-long experience in the fall of 4th year):

- APDesign Italian Studies Program or Education Abroad,
- Internship
- Kansas City Design Center (KCDC)

Please refer to your curriculum guide and academic advisor as you consider your future off campus academic plans and what is required by your particular discipline. More information can be found on the APDesign website, under 'Student Success' > Education Abroad & Off Campus Experiences:

<https://apdesign.k-state.edu/current-students/off-campus-study/index.html>

Industrial Design Students						
Semester	APD Italian Studies Program	K-State in Italy Summer <small>*not studio based</small>	Education Abroad	KCDC	Internship	Important Notes for INDD Students
Summer (after 3 rd yr.)		X	X		X	After selecting your option for fall, you must select an option for one of the summer sessions. INDD students <u>may not</u> enroll in the same option for both fall and summer. <u>Education Abroad options during fall semester must include an approved studio experience.</u> Summer education abroad is not required to include studio experience. Options are subject to change based on program availability and enrollment capacity.
Fall	X		X	X	X	
Summer (after 4 th yr.)		X	X	X		

Education Abroad



THE COLLEGE of
ARCHITECTURE, PLANNING & DESIGN // K-STATE

Off-Campus Options Meeting, April 2024

Information Subject to Change

Why Education Abroad?

- **Academic challenge**—experience a range of topics, assignment types, and instruction styles as you engage in various coursework.
- **Professional growth**—visit notable locations and experience historic and modern design and planning precedents. An education abroad experience can be a desirable credential to future employers.
- **Personal enrichment**—develop independence, a greater sense of self, and increased awareness and appreciation for other cultures.
- **Global perspective**—broaden awareness and multicultural competency by living in another country.
- Have a once-in-a-lifetime experience as a University student.

Potential Challenges When Studying Abroad

- **The language of instruction may not be English**, but full proficiency of the local language is not necessary
- **The academic calendar**, including exact semester start and end dates, may differ from K-State.
- **Minimal interaction with professors** outside of class. University culture may be hierarchical and more formal than at K-State.
- **Homesickness** and **culture shock**

Note: K-State and APDesign have excellent relationships with our partner institutions, but we do not influence their policies or procedures. If you elect to study at a foreign university, you must be prepared to accept and manage potential challenges.

2025-2026 Education Abroad Options for APD Students

Updated on Sep. 1, 2024

Program	City, Country	Program Type	Min. GPA	Enrollment Capacity	ARCH	IARC	INDD	LA	RCP	RECD
APD Italian Studies Program-Orvieto SPRING	Orvieto, Italy	K-State	2.5*	~40	x	x		x	x	x
APD Italian Studies Program-Orvieto FALL	Orvieto, Italy	K-State	2.5*	~30	x		x			
K-State in Italy-Orvieto SUMMER (studio courses not offered in summer program)	Orvieto, Italy	K-State	2.5	N/A	x	x	x	x	x	x
Other Education Abroad Programs										
API London College of Fashion	London, U.K.	Direct Enroll	3.0	16			Fall			
API University of the Arts London	London, U.K.	Direct Enroll	3.0	16			Fall			
BOKU Univ. of Natural Resources and Life Sciences	Vienna, Austria	Exchange	3.0	2				Spring		
Coburg University of Applied Sciences	Coburg, Germany	Exchange	3.0	3		Spring				
Czech Technical University	Prague, Czech Republic	Exchange	3.0	6	Spring	Spring				
Danish Institute for Study Abroad (DIS)	Copenhagen, Denmark	Direct Enroll	3.0	5	Spring	Spring or Summer	Fall or Summer	Spring	Spring	
University of New South Wales	Sydney, Australia	Exchange	3.0	1					Spring	
SAI ELISAVA (Barcelona)	Barcelona, Spain	Direct Enroll	3.0	2			Fall			
University of Sheffield	Sheffield, England	Direct Enroll	3.0	TBD					Spring	
Trier University of Applied Sciences	Trier, Germany	Exchange	3.0	TBD		Spring				
University of Western Australia	Perth, Australia	Exchange	3.0	1	Spring			Spring		
Alternative Education Abroad	Note: Alternative Education Abroad Programs are available by petition only. This option requires extensive advance preparation and submission of a petition for endorsement by your Department, the APD International Studies Committee (ISC), and K-State Office of International Programs (OIP). Endorsement does NOT guarantee admission by the partner institution.									

*If the program is at capacity, the minimum GPA may be raised.

Notes:

- Program availability and enrollment capacity are subject to change.
- ALL Education Abroad programs require an Off-Campus Study Application and students must receive endorsement from the APDesign International Studies Committee.
- Program Type and tuition: K-State = tuition paid to K-State, Exchange = tuition paid to K-State, Direct Enroll = tuition paid to that institution



THE COLLEGE of
ARCHITECTURE, PLANNING & DESIGN // K-STATE

APDesign Italian Studies Program

Orvieto, Italy

<https://www.youtube.com/watch?v=cYmFC3WQndE>



THE COLLEGE of
ARCHITECTURE, PLANNING & DESIGN // K-STATE

Off-Campus Options Meeting, April 2024

Information Subject to Change

APDesign Italian Studies Program

Orvieto, Italy

[Link to Program Information from APDesign](#)

[Link to Program Information from K-State OIP](#)



Spring program option for IARC Students

- Min. GPA 2.50*
- Enrollment Capacity:
 - Approx. 40 students for Spring for all disciplines
 - Approx. 30 students for Fall for all disciplines
- Language of instruction is English
- Studio and seminar classes taught by K-State and Italian professors
- Studio and seminar typically meet two days per week
- Projects focus on issues/concerns pertaining to the local community
- Program includes multiple field trips and cultural workshops
- Students live in furnished apartments shared with fellow KSU students
- **Need to be motivated and flexible**

***If the program is at capacity, minimum GPA may be raised.**



THE COLLEGE of
ARCHITECTURE, PLANNING & DESIGN // K-STATE

APDesign Italian Studies Program

Orvieto, Italy



- Orvieto is located about one hour north of Rome in the Umbria region of Italy.
- It has a rich history, from its Etruscan underground to its Romanesque cathedrals.
- It offers important archaeological, architectural, and urban sites to visit and appreciate.
- Orvieto is a friendly, calm, and welcoming atmosphere.
- The city is considered a living classroom where students are immersed in a culturally stimulating environment surrounded by piazzas, palaces, churches, and cobble lanes.

APDesign Italian Studies Program

Orvieto, Italy



- Students live in fully furnished apartments located in the historic part of the city.
- Apartments are arranged by an Italian agency and accommodate two to six students.
- Students shop for their own groceries and cook their own meals. An introduction to the local market and a cooking class with a local chef is part of the first week's orientation.

APDesign Italian Studies Program

Orvieto, Italy



APDesign Italian Studies Program

Orvieto, Italy



- The program includes multiple one-day field trips (typically to Rome, Siena, Florence, Assisi, Villa Lante) and several extended, two to six-day field trips (typically to Venezia, Vicenza, and Verona in the north and to Pompeii, Sorrento, and the Amalfi Coast in the south).
- Field trips are led by K-State faculty, the Italian professors, and/or professional guides.
- The field trips provide students with opportunities to experience many aspects of Italian culture, art, urban planning, landscape architecture, architecture, interior architecture, and industrial design.

APDesign Italian Studies Program

Orvieto, Italy



- The program includes multiple cultural workshops as part of the curriculum.
- Topics may include:
 - Leather
 - Svinnere
 - Honey
 - Cheese
 - Mosaic Olive Oil & Basketry
 - Craft Beer
 - Photography
 - Ceramic

K-State in Italy (Summer Program)

Orvieto, Italy

[Link to Program Information](#)



<https://ksu.studioabroad.com/index.cfm?FuseAction=Programs.ViewProgramAngular&id=12957>

Summer program option for IARC and all K-State Students

Note: This program runs for 4-weeks; program offerings and dates vary from mid-May to mid-July

- Min. GPA 2.5
- Open to all K-State Students
- Program is 4-weeks, dates vary
- Language of Instruction in **English** by K-State Professors
- *Studio courses are **NOT** offered in this program
- Course offerings change each summer
- Organized travel opportunities to Rome and Florence
- **Need to be motivated and flexible**

K-State in Italy Orvieto, Italy



<https://ksu.studioabroad.com/index.cfm?FuseAction=Programs.ViewProgramAngular&id=12957>

Summer program option for IARC and all K-State Students

Example of Summer 2024 Program, program offerings vary each summer

**Travel
is
Education**

The program is open to all K-State majors, and no prior design or drawing experience is required.

Summer 2024
K-State in Italy | APDesign Program

June 4 – July 6, 2024
June 4 (depart U.S.) and July 6 (depart Italy)

Courses:
Anatomy of Public Space | 4 – credits
Prof. Jessica Canfield, APDesign Director of International Program

Seeing Through Watercolor | 3 – credits
Prof. Otto Chanyakorn



Other Education Abroad Programs



THE COLLEGE of
ARCHITECTURE, PLANNING & DESIGN // K-STATE



Fashion Studies at London College of Fashion (LFC) London, United Kingdom

[Link to Program Information](#)



Unknown (n.d.). UAL (photograph). Retrieved Sep. 2024 from <https://connect.apiabroad.com/program-page>

**Fall program option
for INDD Students**

- Min. GPA 3.00
- Enrollment Capacity: 16
- LCF is ranked among the top 10 institutions within the industry worldwide
- Collaborate with fellow students from around the globe in specialized, career-focused courses in fashion (business and design) and footwear design
- Offers cultural excursions of surrounding areas
- Includes dorm-style housing, with apartments at an additional cost
- **Need to be inquisitive, motivated, and hard-working**



Arts with British Students at the University of the Arts London (UAL) London, United Kingdom

[Link to Program Information](#)



Unknown (n.d.). LFC (photograph). Retrieved Sep. 2024 from <https://connect.apiabroad.com/program-page>

Fall program option for INDD Students

- Min. GPA 3.00
- Enrollment Capacity: 16
- Ranked 2nd in the world for art and design
- UAL specializes in studies of art, design, communications, fashion, and performing arts
- Students choose one course of study, and the classes, projects, and tutorials for that course of study are assigned upon arrival
- Offers cultural excursions of surrounding areas
- Includes dorm-style housing, with upgrades at an additional cost
- Need to be inquisitive, motivated, and hard-working

DIS Danish Institute for Study Abroad (DIS) Copenhagen, Denmark

[Link to Program Information](#)



Unknown (n.d.). *Copenhagen* (photograph). Retrieved June 2017 from <http://www.ironman.com/triathlon/events/emea/ironman/copenhagen.aspx#axzz4kq2tnBhi>

Fall or Summer program option for INDD Students

- Min. GPA 3.00
- Enrollment Capacity: max. of 5 students for all disciplines
- Studio professors are distinguished practicing Danish designers
- Studio meets three days a week
- Field trips are related to studio and well planned
- Offers highly organized orientation
- Very good support for international students
- Good assistance with housing
- Need to be inquisitive, motivated, and hard-working

ELISAVA

Barcelona School of
Design and Engineering

ELISAVA Barcelona School of Design and Engineering Barcelona, Spain

[Link to Program Information](#)



Unknown (n.d.). ELISAVA (photograph). Retrieved March 2019 from <https://www.elisava.net/en/know-us>

**Fall program option
for INDD Students**

- Min. GPA 3.00
- Enrollment Capacity: max. of 2 INDD students
- Language of Instruction is **English**
 - Catalan is the local language
- Broad range of coursework available
- **Need to be inquisitive, motivated, and hard-working**

APDESIGN

THE COLLEGE of
ARCHITECTURE, PLANNING & DESIGN // K-STATE

Alternative Education Abroad Programs

(Available by petition only)

- This option **requires extensive advance preparation** and submission of a petition (including short essay responses) for endorsement by your Department, the APD International Studies Committee (ISC), and the K-State Education Abroad office
- Research potential programs
- Talk with K-State Education Abroad Advisor for APD students, Amanda Mack, regarding program availability, curriculum questions, scholarships, etc.
Email her at mackah@ksu.edu to schedule an appointment.
- If you receive financial aid/scholarships, it is recommended that you make an appointment to talk with your Financial Aid Advisor to discuss whether your Financial Aid package can be applied to the specific program.
To make an appointment, go to: <https://www.k-state.edu/sfa/about/advisor/>
- Discuss your alternative education abroad plan with APD International Programs Director, Jessica Canfield. Email her at jesscan@ksu.edu to schedule an appointment.
- Endorsement does NOT guarantee admission by the partner institution – application to the partner institution is a separate process
- For specific requirements see, ‘**Petitioning for an Alternative Education Abroad Program**’ on the APD website: <https://apdesign.k-state.edu/student-success/education-abroad/>

Education Abroad Scholarships

- K-State Education Abroad office scholarships are open to all students participating in Education Abroad programs in Spring, Summer, and Fall
 - Questions, contact Amanda Mack mackah@ksu.edu
[K-State home](#) » [OIP](#) » [Education Abroad](#) » [Current students](#) » [Funding Your Experience](#) » [Scholarships](#)
<https://www.k-state.edu/abroad/current-students/funding/scholarships.html>
- APD Education Abroad scholarships are open to all APD students participating in the Fall and Spring Italian Studies Program. Information will be available during Education Abroad Orientation meetings.
 - To be considered for APD Education Abroad Scholarships in the '25-26 academic year, students must submit a K-State Scholarship Network (KSN) application by the March 15, 2025 deadline.
[K-State home](#) » [Office of Student Financial Assistance](#) » [Scholarships and Aid](#) » [Scholarships](#) » [K-State Scholarship Network](#)
<https://www.k-state.edu/sfa/scholarships-aid/scholarships/ksn/>
- Questions, contact Courtney Markle markle@ksu.edu

Education Abroad Questions

- For curriculum and/or academic plan questions meet with your [APD Academic Advisor](#)
- For Education Abroad questions meet with the K-State APD Education Abroad Advisor, [Amanda Mack \(mackah@ksu.edu\)](mailto:mackah@ksu.edu)
- Talk to a member of the [APD International Studies Committee](#)
 - Jessica Canfield, Director & LARCP Rep.
 - Otto Chanyakorn, ARCH Rep.
 - Courtney Markle, Project Coordinator, SAS Office

KCDC

Kansas City Design Center



Why KCDC?

- Be part of a unique learning laboratory located in the downtown Kansas City that provides students the opportunity to **fully immerse themselves in on-site project studies**
- Actively explore **current urban design issues** facing Kansas City's future development
- Participate in an **interdisciplinary urban design** studio that forms partnerships with local client groups, community members and professional firms
- Develop **design visions and proposals** that address major architectural, urban design and urban planning issues throughout metropolitan Kansas City
- Participate in **critical dialogue** concerning architecture, planning and design issues with public agencies and local community organizations

KCDC

What we do:

Located in the heart of downtown Kansas City, the Kansas City Design Center (KCDC) is a nationally-recognized, service-learning urban design program that operates as a 501(c)3 nonprofit partnership among local civic leaders, professional designers, and Kansas State University.



KCDC

Who we are:

Each semester Kansas State University students participate in studio and seminar courses at KCDC to learn from K-State faculty, professionals, and community stakeholders.

The projects are interdisciplinary in focus and a variety of disciplines at APDesign are encouraged to participate.



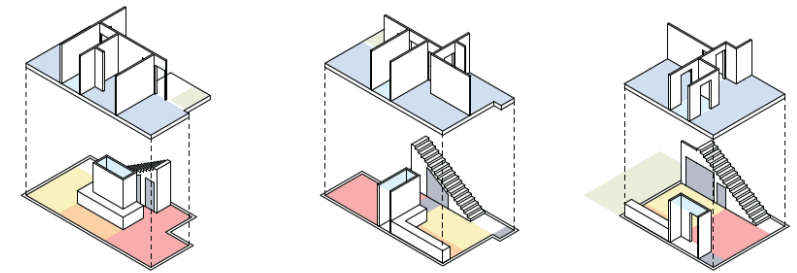
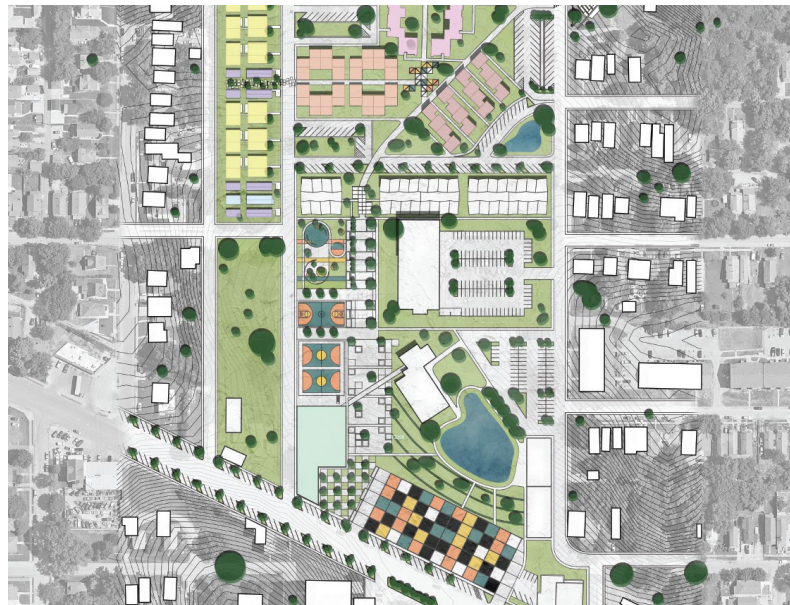
KCDC

AY23-24 project

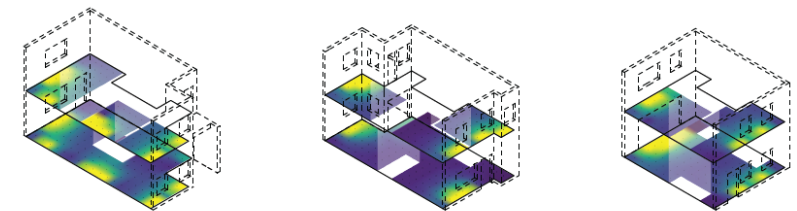
The current studio is collaborating with Wyandotte County/Kansas City Kansas to reimagine undeveloped land around Bethany Park in a masterplan focusing on net zero affordable housing and sustainable neighborhood design.

Students are proposing new housing types that address small homes, intergenerational housing, mix uses, and shared amenities.

The studio is also collaborating with KC Habitat for Humanity on an exhibit showcasing high performance prefab construction that will be displayed at CABA and KCK's Third Friday Arts Walk.



Program Diagram

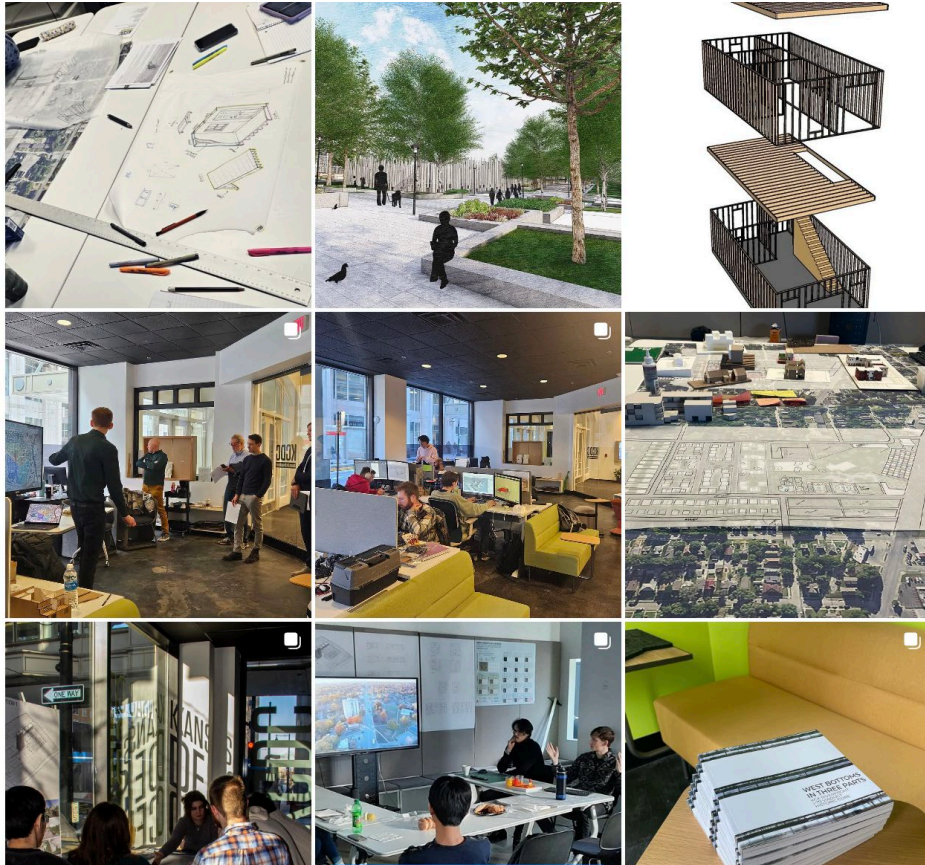


Daylight Factor

Learn more about KCDC:

Instagram @[kcdesigncenter](https://www.instagram.com/kcdesigncenter)

<http://www.kcdesigncenter.org/>



KCDC
Kansas City Design Center

[About](#) / [Projects](#) / [Events](#) / [News](#) / [Join](#) / [Store](#)



KCDC
Kansas City Design Center

APDESIGN

THE COLLEGE of
ARCHITECTURE, PLANNING & DESIGN // K-STATE

Internship



THE COLLEGE of
ARCHITECTURE, PLANNING & DESIGN // K-STATE

Next Steps

- Review and consider the options presented today
 - You will be notified via email when the slides/documents are updated on the APD website
- Discuss the options and your preferences with your parents/family/friends
- In the Fall, meet with your academic advisor to determine your plan
- Attend the Fall meeting on “How to apply for Off-Campus Study”
 - You will receive an email with more information in September
- **Submit your Off-Campus Study Application, Due Friday, October 25**
 - You will receive instructions in late August/early September

Questions

- For Curriculum and/or Academic Planning
Sheryl Peters, Academic Advisor, sherylp@ksu.edu
Mitzi Farmer, Director of Academic Services, mwfarmer@ksu.edu
- For APD Italian Studies Program
Jessica Canfield, APD Director of International Programs jesscan@ksu.edu
- For other Education Abroad Programs
Amanda Mack, Education Abroad Advisor for APD
K-State Office of International Programs mackah@ksu.edu
- For KCDC
Lauren Harness, Director, lharness@kcdesigncenter.org
Kylie McConnell, Program Coordinator kmccconnell@kcdesigncenter.org
- For Internship
Scott Barton, Assistant Professor scottbarton@ksu.edu